

MATERIAL:
CASTING - BRONZE ALLOY
HARDWARE - SILICON BRONZE OR STAINLESS STEEL

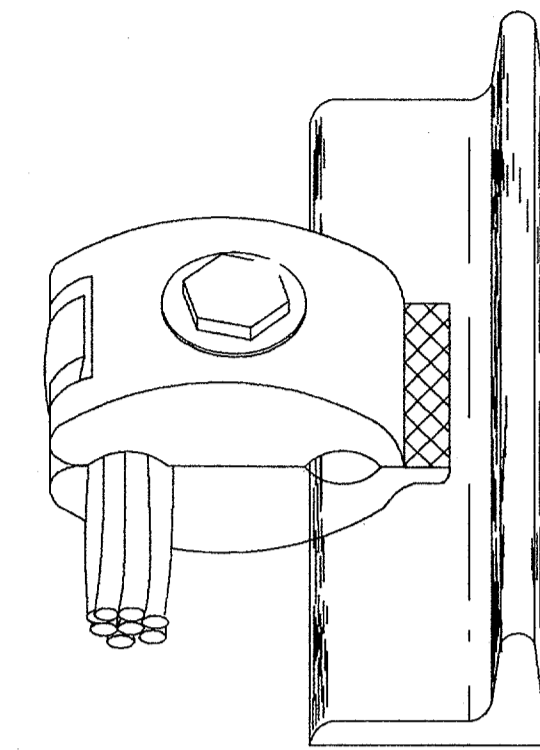
SOURCES:
A. BURNDY "GAR" TYPE
B. THOMPSON NO.800 SERIES
C. ANDERSON CONNECTOR "GC" TYPE
D. OR APPROVED EQUAL

NOTES:
1. TWO EACH U-BOLT CLAMPS TO BE USED TO ATTACH AIR TERMINALS TO PIPE STANDARDS.

2. USE PROPER SIZE U-BOLT CLAMP TO FIT CABLE AND PIPE.

U-BOLT TYPE CLAMP

DOWN CONDUCTOR OR AIR TERMINAL TO PIPE TOWER LEG AND PIPE STANDARD

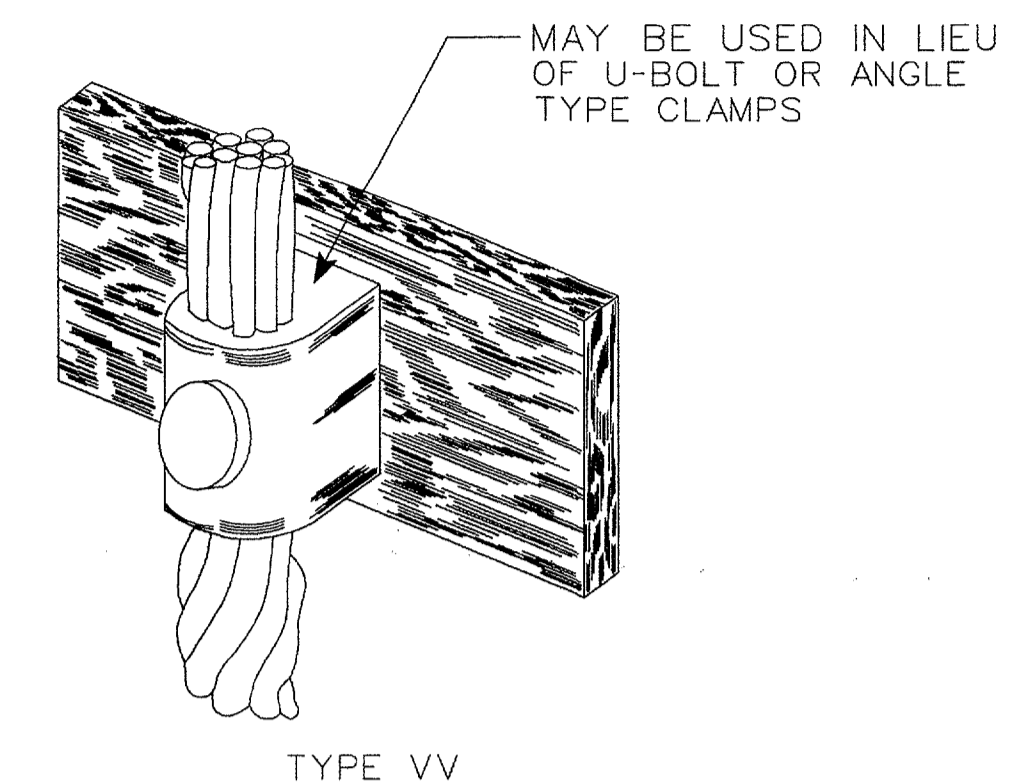


MATERIAL: CAST BRONZE
HARDWARE: SILICON BRONZE OR STAINLESS STEEL

SOURCES:
1. THOMPSON NO.142
2. INDEPENDENT NO.298A
3. ROBBINS 68X
4. A-C NO.C559

ANGLE TYPE CLAMP

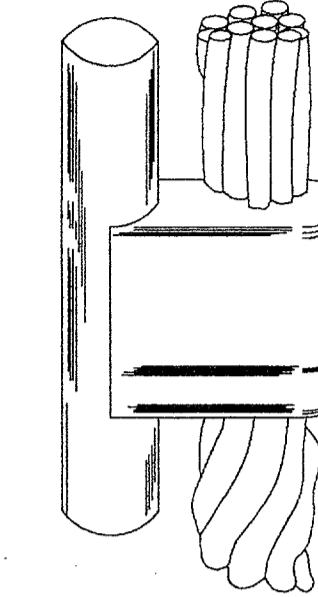
DOWN CONDUCTOR TO ANGLE OR CHANNEL IRON



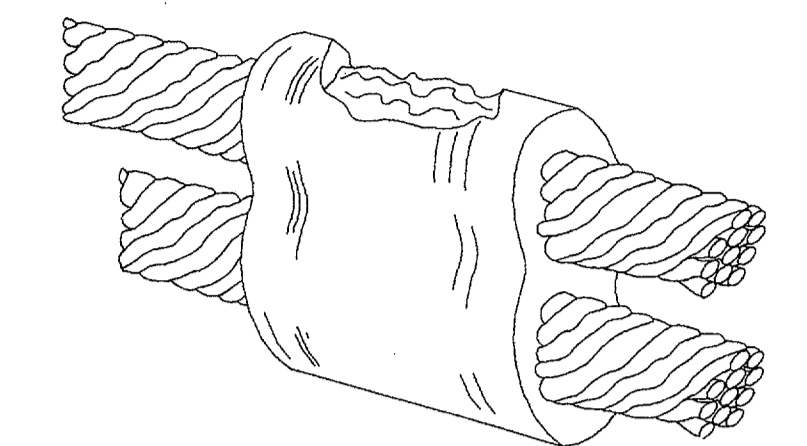
TYPE VV

EXOTHERMIC WELD NOTES:

1. DUXSEAL, MADE BY JOHNS-MANVILLE, SHALL BE USED TO SEAL AROUND EACH CABLE ON OUTSIDE OF THE MOLD FOR ALL CABLE CONNECTIONS.
2. THE CABLES SHALL BE CLEANED WITH A WIRE BRUSH AND CLAMPED TO PREVENT THEIR MOVEMENT FROM MOLD PRIOR TO SHOOTING WELD.
3. MOLDS ARE TO BE OF THE TYPE APPROVED FOR PROPER CONNECTION AND CLEANED PRIOR TO SHOT. MOLD SHALL BE DRIED WITH PROPANE TORCH BEFORE USING.
4. MOLDS SHALL NOT BE MODIFIED.



TYPE GP



TYPE PT

EXOTHERMIC WELD CONNECTIONS

RECOMMENDED EXOTHERMIC WELD COMPONENTS

REQUIRED CABLE CONNECTION	MOLD	WELD METAL
THOMPSON NO.32 TO GND. ROD	GPR-188C	250
THOMPSON NO.32 TO NO.32	PTC-8C8C	150
SOLID AWG NO.2 TO NO.32	PTC-8C1T	90
STRANDED AWG NO.2 TO NO.32	PTC-8C1V	115
STRANDED AWG NO.4/0 TO NO.32	PTC-2Q8C	150
STRANDED AWG NO.4/0 TO NO.28R	PTC-2Q8D	200
THOMPSON 28R TO GROUND ROD	GPR-188D	250
STRANDED AWG NO.4/0 TO NO.4/0	PTC-2Q2Q	200
THOMPSON NO.28R TO NO.28R	PTC-8D8D	200
STRANDED AWG NO.4/0 TO AWG NO.2	PTC-2Q1V	150
STRANDED AWG NO.4/0 TO GND. ROD	GPR-182Q	250
NO.32 TO VERTICAL STEEL	VVR8C	200 (SEE NOTE 2)
NO.28R TO VERTICAL STEEL	VVR8D	2-150 (SEE NOTE 2)

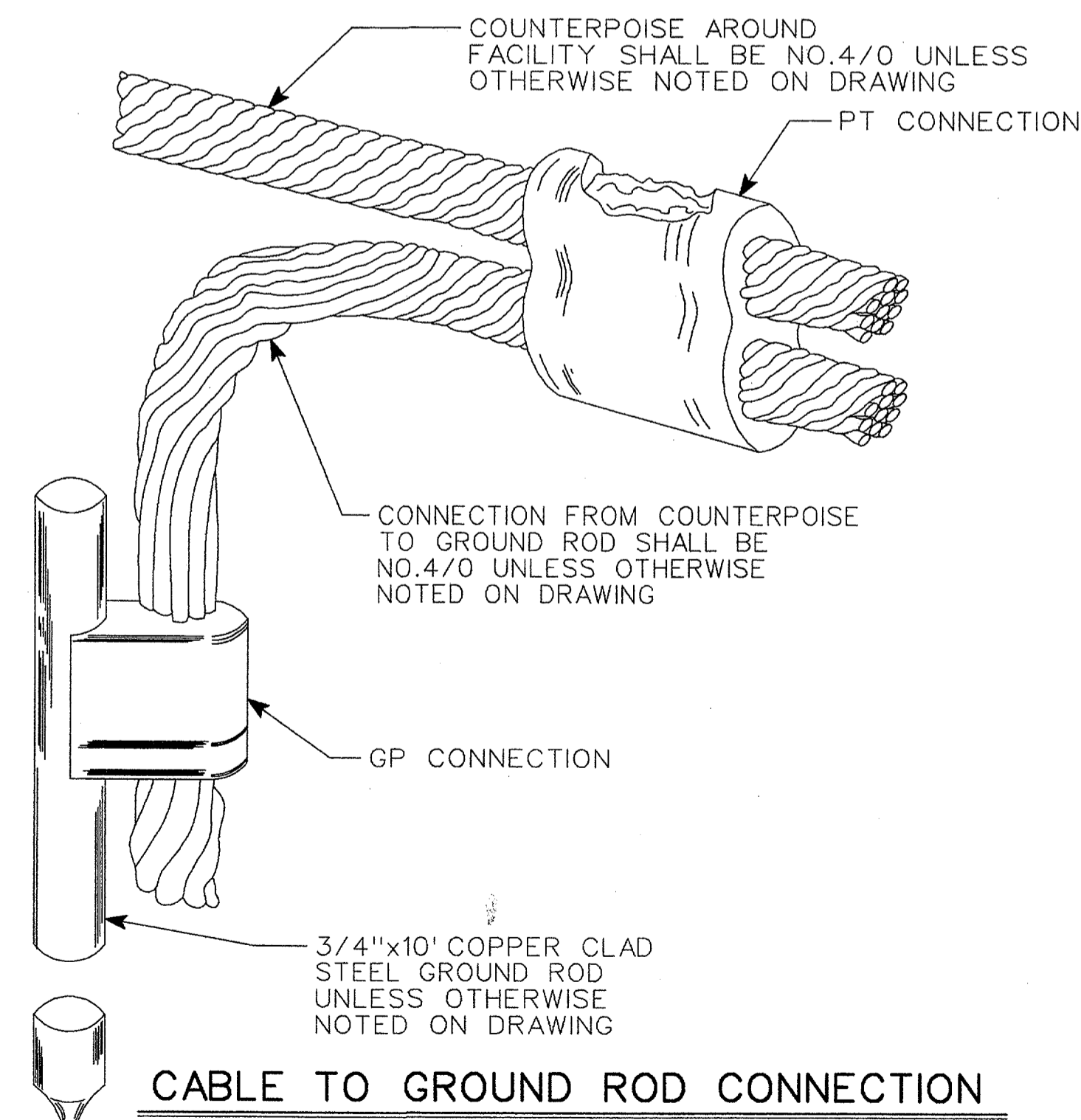
NOTES:

1. DELETED
2. FOR CABLE TO STEEL PIPE, ADD PIPE DIRECTION AND NORMAL PIPE SIZE TO VV MOLD NUMBER.

EQUIVALENT CATALOG NUMBERS FOR THOMPSON, ROBBINS, AND A/C CABLE

a. THOMPSON NO.32
ROBBINS NO.1
A/C C-122

b. THOMPSON NO.28R
ROBBINS NO.604
A/C C-126



CABLE TO GROUND ROD CONNECTION

DEPARTMENT OF TRANSPORTATION
FEDERAL AVIATION ADMINISTRATION
FORT WORTH IMPLEMENTATION CENTER/SOUTHWEST REGION - FORT WORTH, TEXAS

**GROUNDING STANDARDS
TYPICAL CONNECTIONS**

REV.	DATE	DESCRIPTION	DF TO	CHECKED
2	11-16-98	PREPARED FOR AS-BUILT (PER L. FLORES; DATED 09-28-98; J.O.N.: X8241).	CAB	RKM
1	06-07-95	GENERAL REVISION	JLM	BRF

SUBMITTED: ORIGINAL DRAWING SIGNED BY: C. C. CALLAHAN for SYSTEM ENGINEER, ANI-	APPROVED: ORIGINAL DRAWING SIGNED BY: G. R. RIVERA for PLATFORM MANAGER, ANI-
DESIGNED: JACK PARKER REVIEWED: ORIG. DFT.: JAF/ALM 04-14-95 FACILITY:	ISSUED BY FORT WORTH NAS IMPLEMENTATION CENTER DRAWING NUMBER: SWSD-GROUNDING-E02-02
DATE: 04-10-92	

THIS DRAWING PRODUCED ON THE SOUTHWEST REGION MICROSTATION SYSTEM