

THIS DRAWING PRODUCED ON THE SOUTHWEST REGION MICROSTATION SYSTEM

KEYED NOTES:

- ① STOP SIGN. SEE SHEET C014.
- ② PAINTED STOP BAR. SEE SHEET C014.
- ③ SECURITY FENCE. SEE SHEET C020 AND C021.
- ④ GATE RETRACT. SEE SHEET C009 AND C015.
- ⑤ GATE CONTROLLER.
- ⑥ 7" CONCRETE PAVEMENT. SEE SHEET C015.
- ⑦ 6" CONCRETE CURB. SEE SHEET C015.

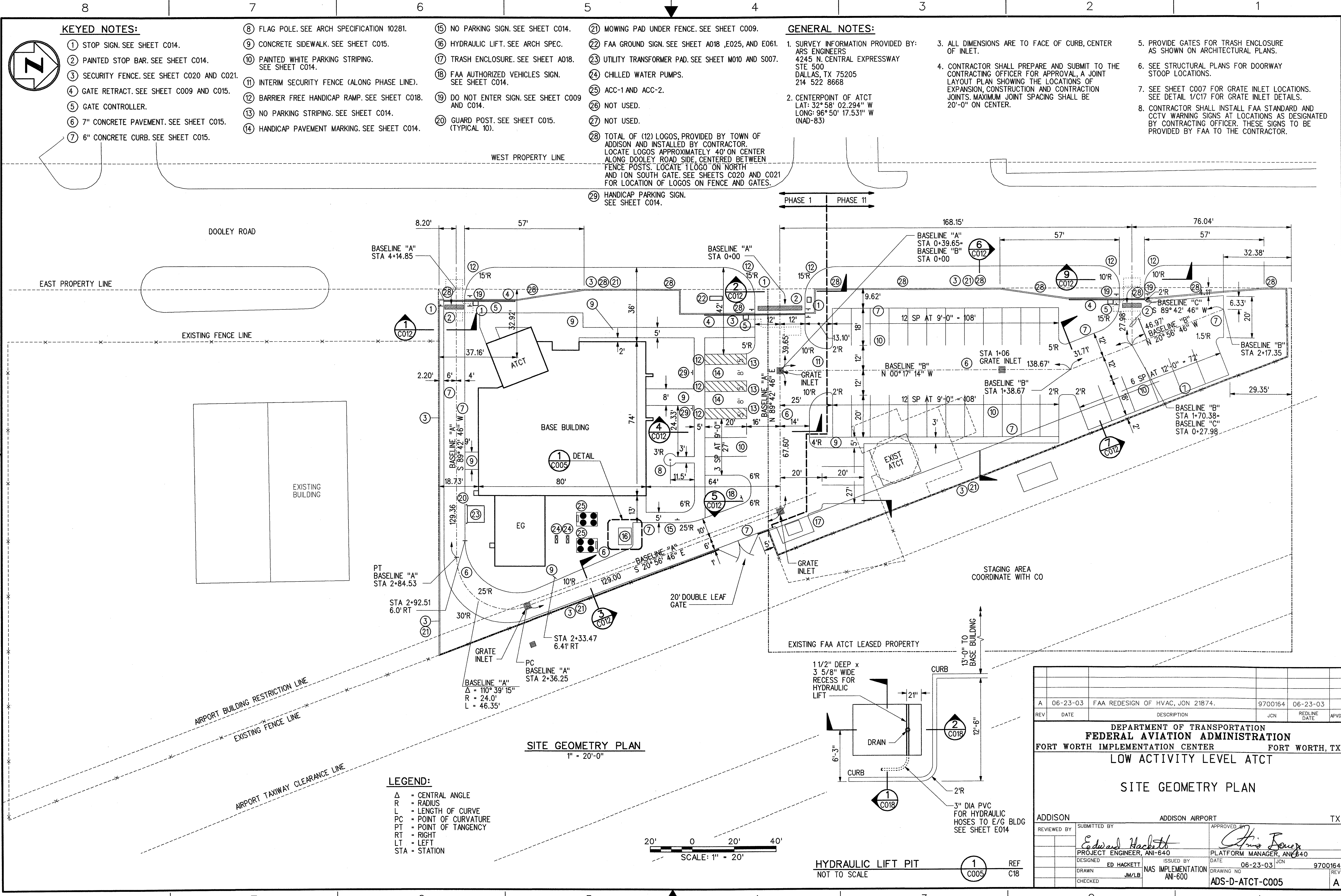
- ⑧ FLAG POLE. SEE ARCH SPECIFICATION 10281.
- ⑨ CONCRETE SIDEWALK. SEE SHEET C015.
- ⑩ PAINTED WHITE PARKING STRIPING. SEE SHEET C014.
- ⑪ INTERIM SECURITY FENCE (ALONG PHASE LINE).
- ⑫ BARRIER FREE HANDICAP RAMP. SEE SHEET C018.
- ⑬ NO PARKING STRIPING. SEE SHEET C014.
- ⑭ HANDICAP PAVEMENT MARKING. SEE SHEET C014.

- ⑮ NO PARKING SIGN. SEE SHEET C014.
- ⑯ HYDRAULIC LIFT. SEE ARCH SPEC.
- ⑰ TRASH ENCLOSURE. SEE SHEET A018.
- ⑱ FAA AUTHORIZED VEHICLES SIGN. SEE SHEET C014.
- ⑲ DO NOT ENTER SIGN. SEE SHEET C009 AND C014.
- ⑳ GUARD POST. SEE SHEET C015. (TYPICAL 10).

- ㉑ MOWING PAD UNDER FENCE. SEE SHEET C009.
- ㉒ FAA GROUND SIGN. SEE SHEET A018, E025, AND E061.
- ㉓ UTILITY TRANSFORMER PAD. SEE SHEET M010 AND S007.
- ㉔ CHILLED WATER PUMPS.
- ㉕ ACC-1 AND ACC-2.
- ㉖ NOT USED.
- ㉗ NOT USED.
- ㉘ TOTAL OF (12) LOGOS, PROVIDED BY TOWN OF ADDISON AND INSTALLED BY CONTRACTOR. LOCATE LOGOS APPROXIMATELY 40' ON CENTER ALONG DOOLEY ROAD SIDE, CENTERED BETWEEN FENCE POSTS. LOCATE 1 LOGO ON NORTH AND 1 ON SOUTH GATE. SEE SHEETS C020 AND C021 FOR LOCATION OF LOGOS ON FENCE AND GATES.
- ㉙ HANDICAP PARKING SIGN. SEE SHEET C014.

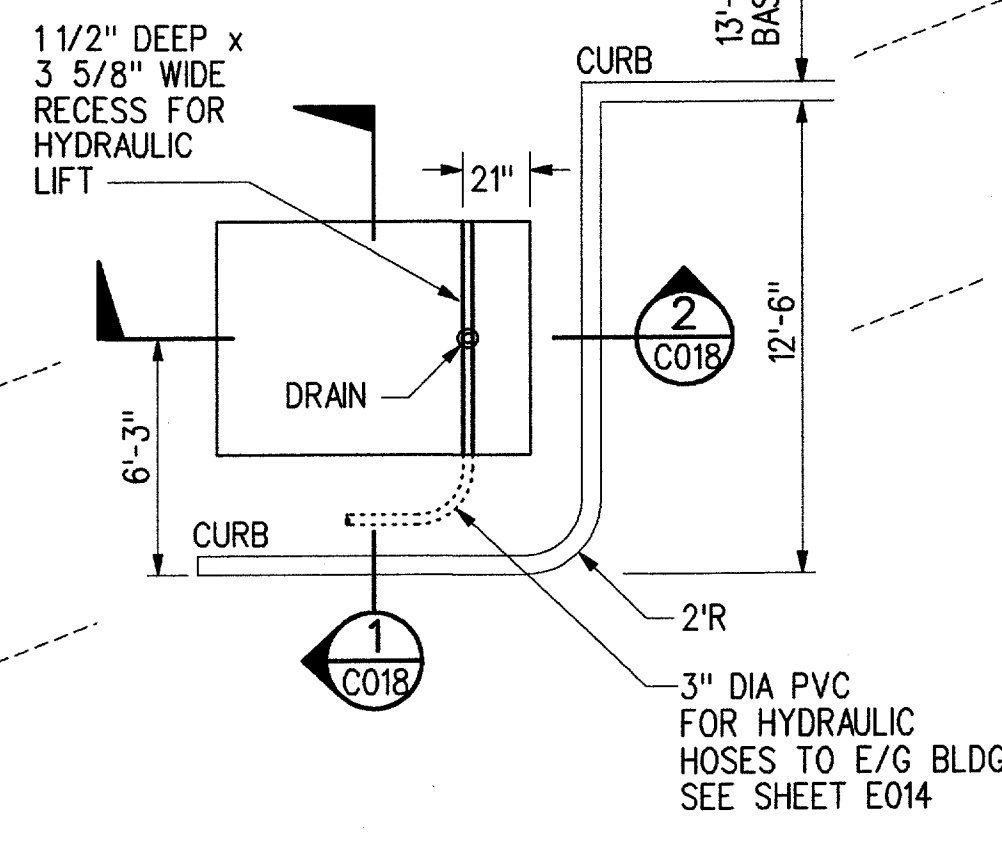
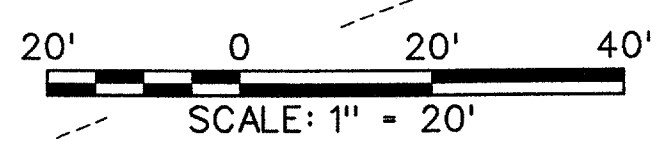
GENERAL NOTES:

- 1. SURVEY INFORMATION PROVIDED BY: ARS ENGINEERS
4245 N. CENTRAL EXPRESSWAY
STE 500
DALLAS, TX 75205
214 522 8668
- 2. CENTERPOINT OF ATCT
LAT: 32° 58' 02.294" N
LONG: 96° 50' 17.531" W
(NAD-83)
- 3. ALL DIMENSIONS ARE TO FACE OF CURB, CENTER OF INLET.
- 4. CONTRACTOR SHALL PREPARE AND SUBMIT TO THE CONTRACTING OFFICER FOR APPROVAL, A JOINT LAYOUT PLAN SHOWING THE LOCATIONS OF EXPANSION, CONSTRUCTION AND CONTRACTION JOINTS. MAXIMUM JOINT SPACING SHALL BE 20'-0" ON CENTER.
- 5. PROVIDE GATES FOR TRASH ENCLOSURE AS SHOWN ON ARCHITECTURAL PLANS.
- 6. SEE STRUCTURAL PLANS FOR DOORWAY STOOP LOCATIONS.
- 7. SEE SHEET C007 FOR GRATE INLET LOCATIONS. SEE DETAIL 1/C17 FOR GRATE INLET DETAILS.
- 8. CONTRACTOR SHALL INSTALL FAA STANDARD AND CCTV WARNING SIGNS AT LOCATIONS AS DESIGNATED BY CONTRACTING OFFICER. THESE SIGNS TO BE PROVIDED BY FAA TO THE CONTRACTOR.



SITE GEOMETRY PLAN
1" = 20'-0"

- LEGEND:
- Δ = CENTRAL ANGLE
 - R = RADIUS
 - L = LENGTH OF CURVE
 - PC = POINT OF CURVATURE
 - PT = POINT OF TANGENCY
 - RT = RIGHT
 - LT = LEFT
 - STA = STATION



A		06-23-03	FAA REDESIGN OF HVAC, JON 21874.	9700164	06-23-03
REV	DATE	DESCRIPTION	JCN	REDLINE DATE	APVD
DEPARTMENT OF TRANSPORTATION FEDERAL AVIATION ADMINISTRATION FORT WORTH IMPLEMENTATION CENTER FORT WORTH, TX LOW ACTIVITY LEVEL ATCT SITE GEOMETRY PLAN					
ADDISON		ADDISON AIRPORT		TX	
DESIGNED BY	ED HACKETT	ISSUED BY	NAS IMPLEMENTATION ANI-600	DATE	06-23-03
DRAWN	JM/LB	CHECKED		DRAWING NO	9700164
				APPROVED BY	<i>Edwards</i>
				PROJECT ENGINEER, ANI-640	PLATFORM MANAGER, ANI-640
				DATE	06-23-03
				JCN	9700164
				REV	A
				REF	C18
				REF	C005

m:\add\sect\sect\add\add-1\atct-co05-a.dgn
07/17/2003 04:53:03 PM adam