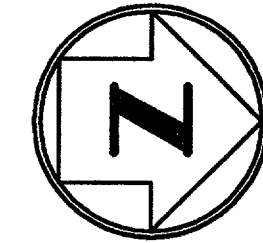


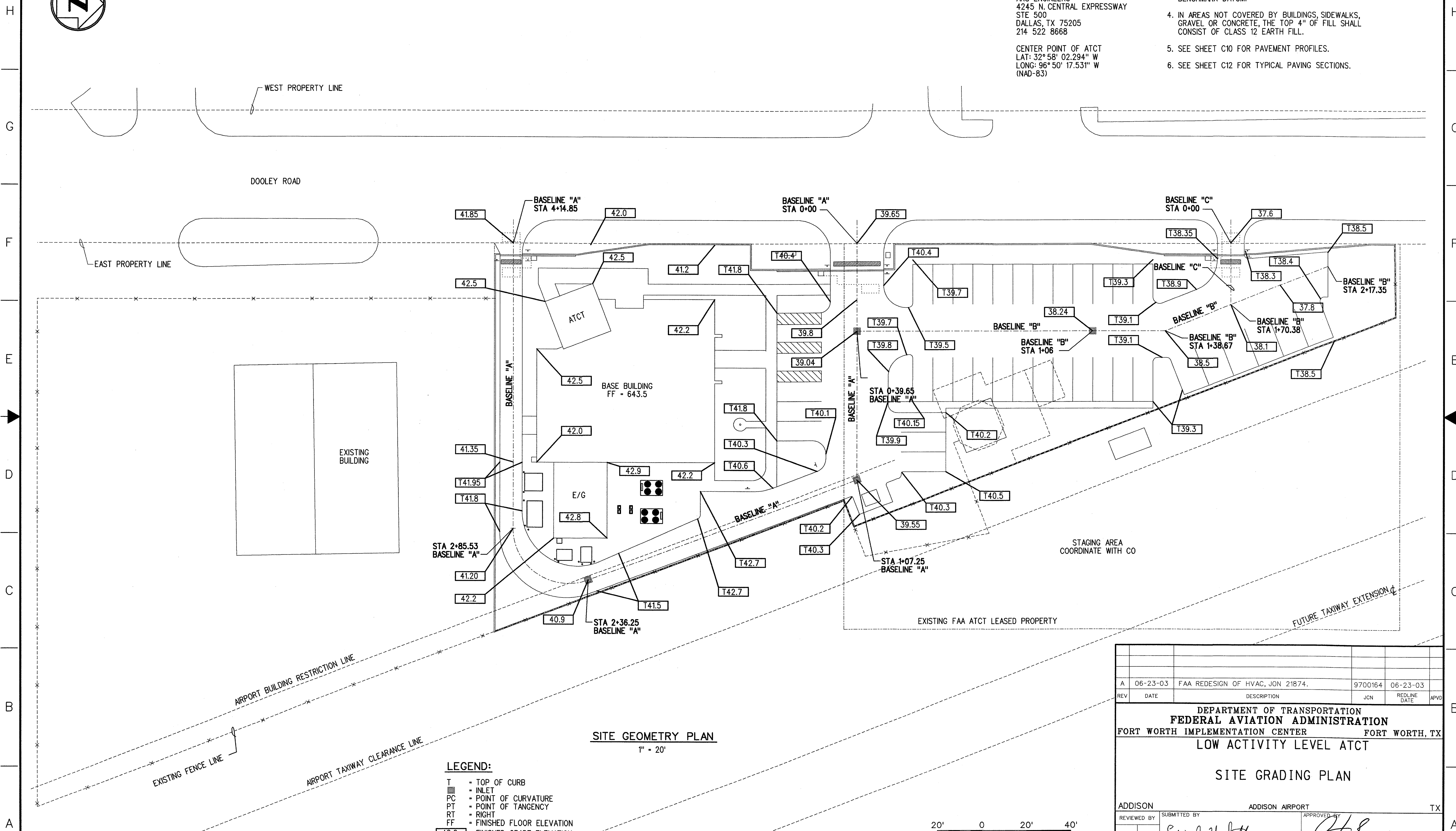
THIS DRAWING PRODUCED ON THE SOUTHWEST REGION MICROSTATION SYSTEM



**GENERAL NOTES:**

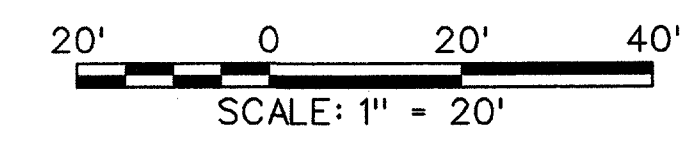
SURVEY INFORMATION PROVIDED BY:  
ARS ENGINEERS  
4245 N. CENTRAL EXPRESSWAY  
STE 500  
DALLAS, TX 75205  
214 522 8668  
  
CENTER POINT OF ATCT  
LAT: 32° 58' 02.294" N  
LONG: 96° 50' 17.531" W  
(NAD-83)

- ADD 600.0 TO SPOT ELEVATIONS TO CONVERT BENCHMARK DATUM.
- IN AREAS NOT COVERED BY BUILDINGS, SIDEWALKS, GRAVEL OR CONCRETE, THE TOP 4" OF FILL SHALL CONSIST OF CLASS 12 EARTH FILL.
- SEE SHEET C10 FOR PAVEMENT PROFILES.
- SEE SHEET C12 FOR TYPICAL PAVING SECTIONS.



**SITE GEOMETRY PLAN**  
1" = 20'

- LEGEND:**
- T = TOP OF CURB
  - I = INLET
  - PC = POINT OF CURVATURE
  - PT = POINT OF TANGENCY
  - RT = RIGHT
  - FF = FINISHED FLOOR ELEVATION
  - 42.0 = FINISHED GRADE ELEVATION



|   |                           |                 |                                  |                 |              |      |
|---|---------------------------|-----------------|----------------------------------|-----------------|--------------|------|
| A   |                           | 06-23-03        | FAA REDESIGN OF HVAC, JON 21874. | 9700164         | 06-23-03     |      |
| REV   | DATE                      | DESCRIPTION     |                                  | JCN             | REDLINE DATE | APVD |
| DEPARTMENT OF TRANSPORTATION<br><b>FEDERAL AVIATION ADMINISTRATION</b><br>FORT WORTH IMPLEMENTATION CENTER FORT WORTH, TX<br><b>LOW ACTIVITY LEVEL ATCT</b><br><b>SITE GRADING PLAN</b> |                           |                 |                                  |                 |              |      |
| ADDISON   |                           | ADDISON AIRPORT |                                  | TX              |              |      |
| REVIEWED BY   | SUBMITTED BY              |                 | APPROVED BY                      |                 |              |      |
|   | <i>Edward Hackett</i>     |                 | <i>John...</i>                   |                 |              |      |
|   | PROJECT ENGINEER, ANI-630 |                 | PLATFORM MANAGER, ANI-630        |                 |              |      |
|   | DESIGNED                  | M. DOERR        | ISSUED BY                        | DATE            | 06-23-03     | JCN  |
|   | DRAWN                     | JM/LB           | NAS IMPLEMENTATION ANI-600       | DRAWING NO      | 9700164      | REV  |
|   | CHECKED                   |                 |                                  | ADS-D-ATCT-C006 |              | A    |

m:\vsa\dact\active\vide-dact-c006-na.dgn  
07/17/2003 04:53:05 PM Room