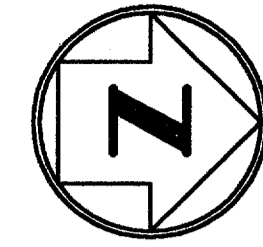
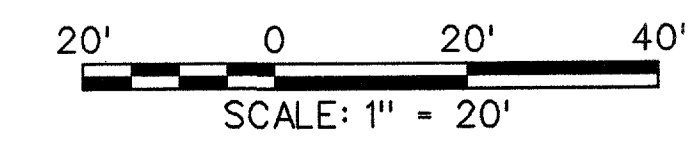
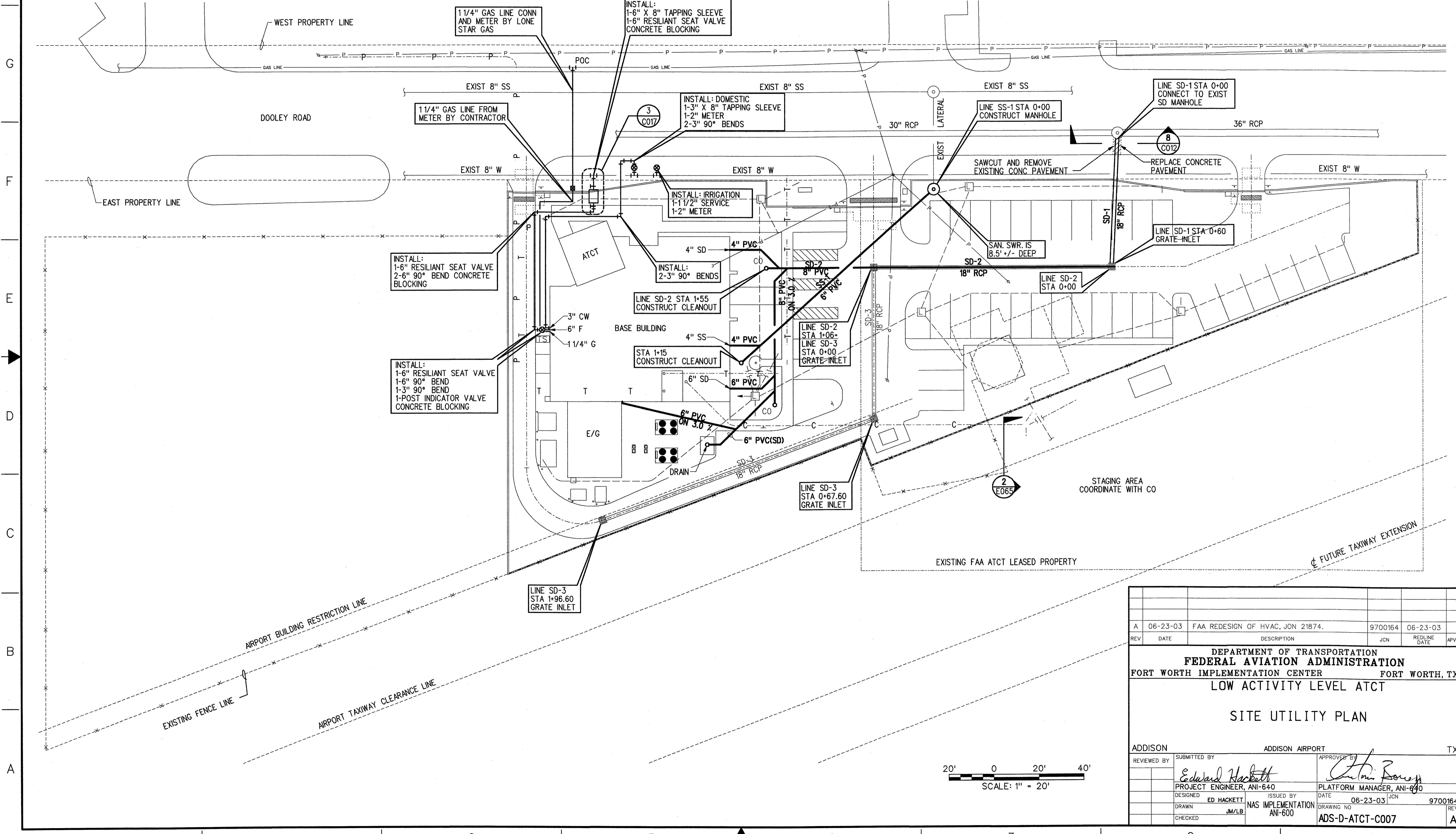


THIS DRAWING PRODUCED ON THE SOUTHWEST REGION MICROSTATION SYSTEM



NOTES:

- CONSTRUCT SD-1, SD-2, AND GRATE INLET DURING PHASE 1 OF CONSTRUCTION. PROVIDE TEMPORARY ASPHALT OVER PIPE TRENCHES.
- DIMENSIONS ARE TO FACE OF CURB, CENTER OF PIPE, INLET, OR MANHOLE.
- WATER MAINS 4" AND LARGER SHALL BE PVC PIPE, CLASS 200, AWWA C900, UNLESS NOTED OTHERWISE.
- REINFORCED CONCRETE PIPE FOR STORM DRAINS SHALL BE CLASS 111.
- WATER MAINS SMALLER THAN 4" SHALL BE TYPE I, GRADE 1, PVC, SCHEDULE 40 (ASTM D-1785).
- MINIMUM COVER FOR 4" TO 8" WATER MAINS SHALL BE 48" FROM FINISHED GRADE TO TOP OF PIPE. MINIMUM COVER FOR 2" OR 3" WATER MAINS SHALL BE 36" FROM FINISHED GRADE TO TOP OF PIPE.
- SEE SHEET C11 FOR UTILITY PROFILES.
- STORM DRAINS 12" DIAMETER AND SMALLER SHALL BE PVC PIPE CONFORMING TO ASTM D-3034, SDR-35, AND SHALL MEET ALL THE REQUIREMENTS OF SECTION 02731 OF THE SPECIFICATIONS.
- SANITARY SEWER LINES 4" AND LARGER SHALL BE PVC PIPE CONFORMING TO ASTM D-3034, SDR-35.
- SEE PLUMBING SHEETS P004 AND P006 FOR CONTINUATION OF UTILITY LINES.
- PROVIDE A TEMPORARY DRAIN ON SD-2 AT THE PHASE LINE. REMOVE DURING PHASE 11 CONSTRUCTION.



A		06-23-03	FAA REDESIGN OF HVAC, JON 21874.	9700164	06-23-03
REV	DATE	DESCRIPTION		JCN	REDLINE DATE
DEPARTMENT OF TRANSPORTATION FEDERAL AVIATION ADMINISTRATION FORT WORTH IMPLEMENTATION CENTER FORT WORTH, TX LOW ACTIVITY LEVEL ATCT SITE UTILITY PLAN					
ADDISON		ADDISON AIRPORT		TX	
REVIEWED BY	SUBMITTED BY		APPROVED BY		
	<i>Edward Hackett</i>		<i>John Boyer</i>		
	PROJECT ENGINEER, ANI-640		PLATFORM MANAGER, ANI-640		
	DESIGNED	ISSUED BY	DATE	JCN	REV
	ED HACKETT	NAS IMPLEMENTATION	06-23-03	JON	9700164
	DRAWN	JM/LB	DRAWING NO.		
	CHECKED	ANI-600	ADS-D-ATCT-C007		

m:\add\active\add-d-elect-c007.a.dgn
07/17/2003 04:53:07 PM ksom