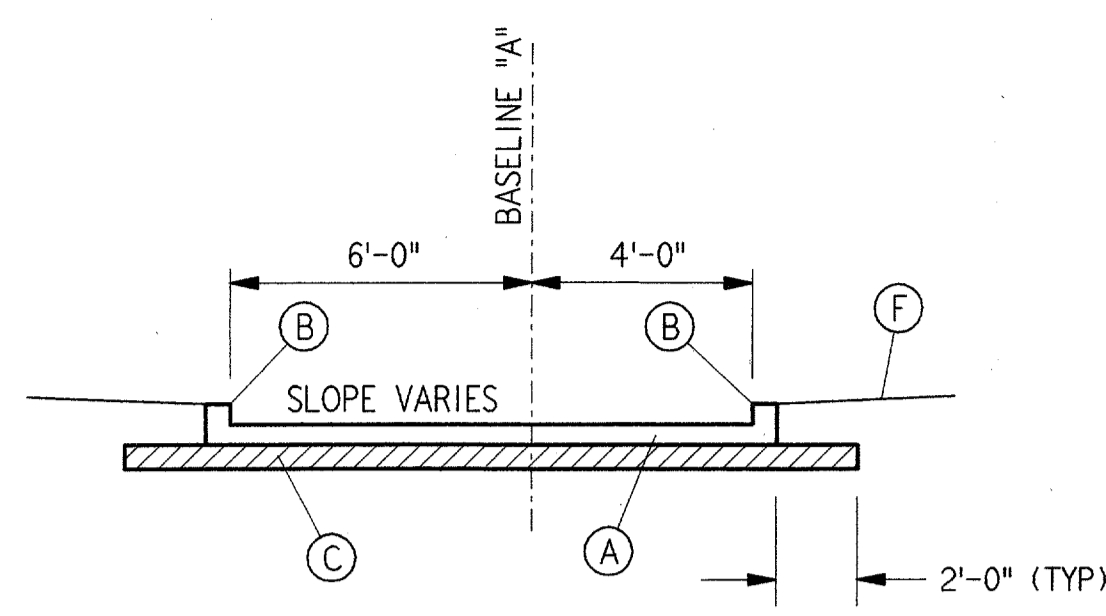
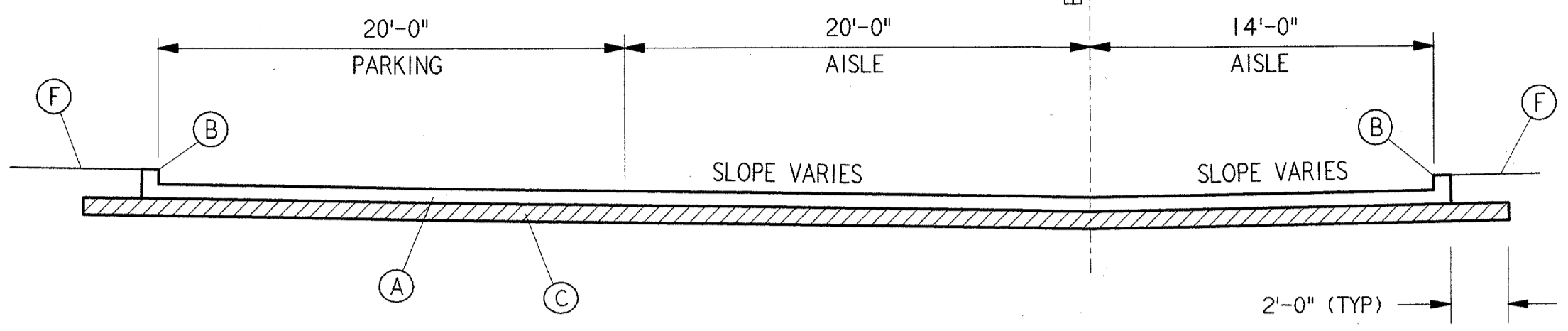


KEYED NOTES:

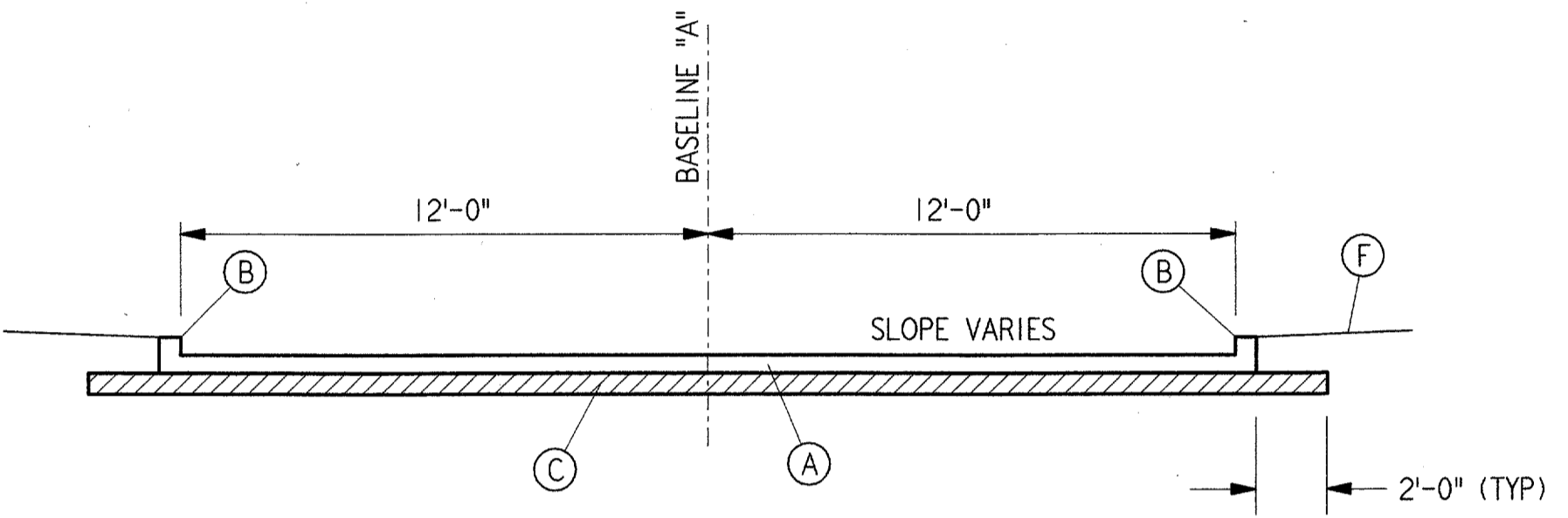
- (A) 7" CLASS A CONCRETE PAVEMENT WITH #3 BARS ON 24" CENTER EACH WAY AT MIDPOINT.
- (B) 6" MONOLITHIC CURB.
- (C) 6" LIME TREATED SUB-GRADE (33# PER SQUARE YARD).
- (D) SECURITY FENCE
- (E) 4" CONCRETE SIDEWALK. SEE SHEET C15.
- (F) GRASSED SLOPE
- (G) CONCRETE MOW PAD
- (H) 12" CLASS "A" CONCRETE PAVEMENT WITH #4 BARS ON 18" CENTERS EACH WAY AT 4" FROM TOP.
- (I) SAWCUT FULL DEPTH.
- (J) #4 BARS X 2'-6". INSERT INTO EXISTING PAVEMENT 12" INTO DRILLED HOLES AT MID-DEPTH ON 18" CENTERS.



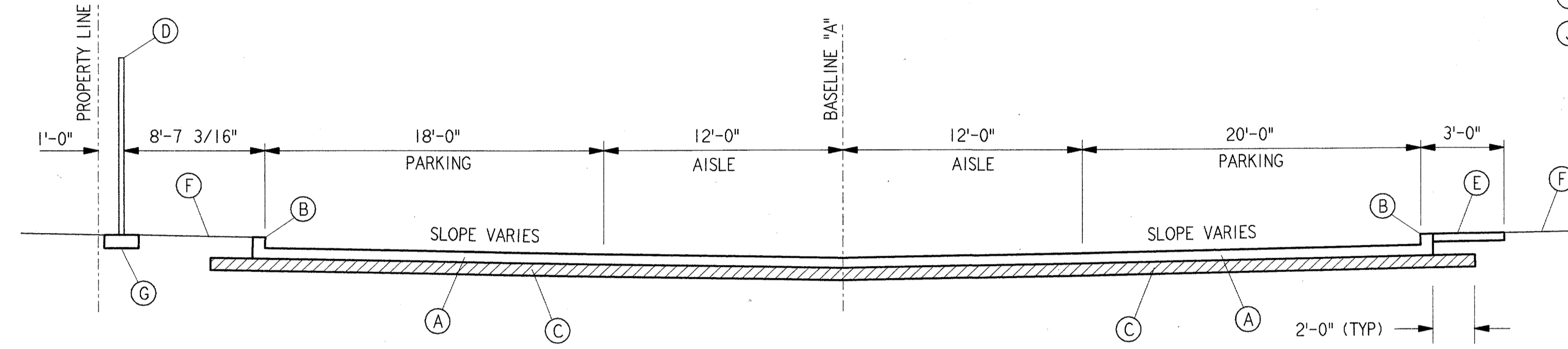
SECTION 1 REF C12 C05 NTS



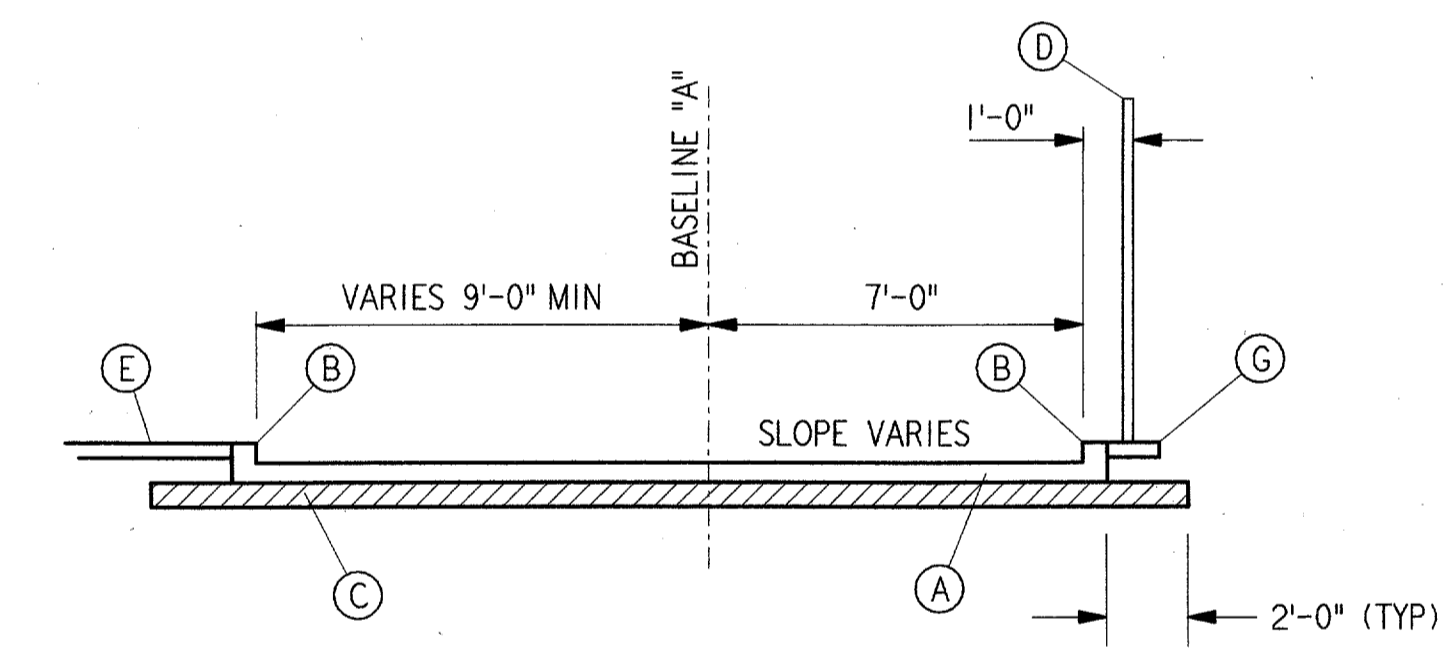
SECTION 5 REF C12 C05 NTS



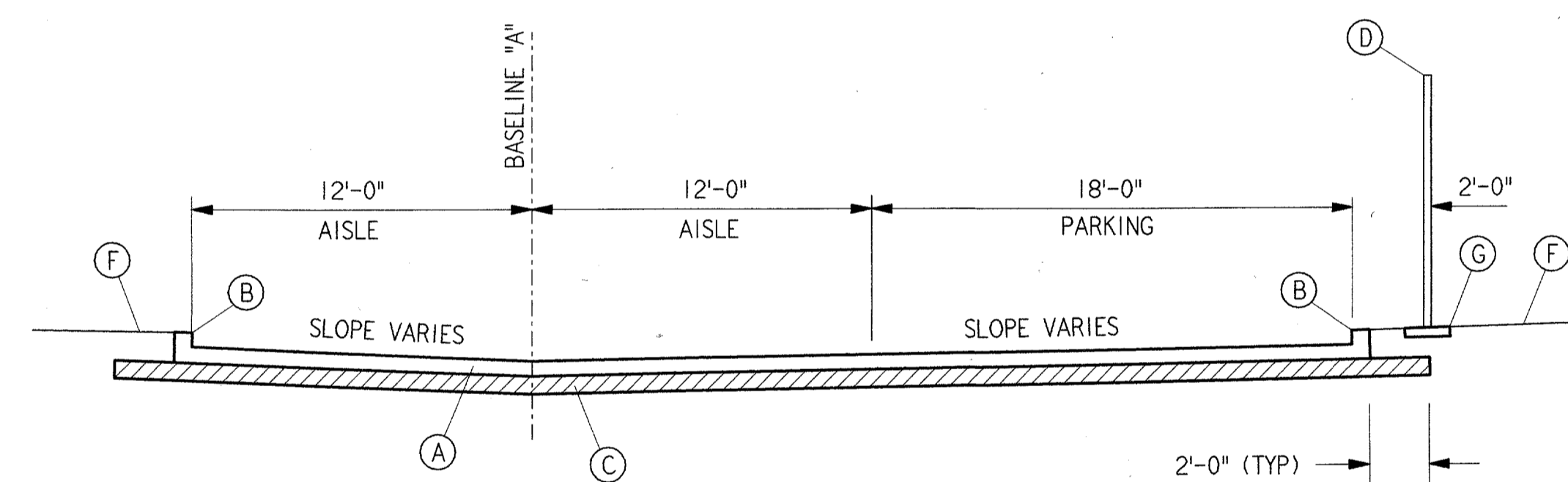
SECTION 2 REF C12 C05 NTS



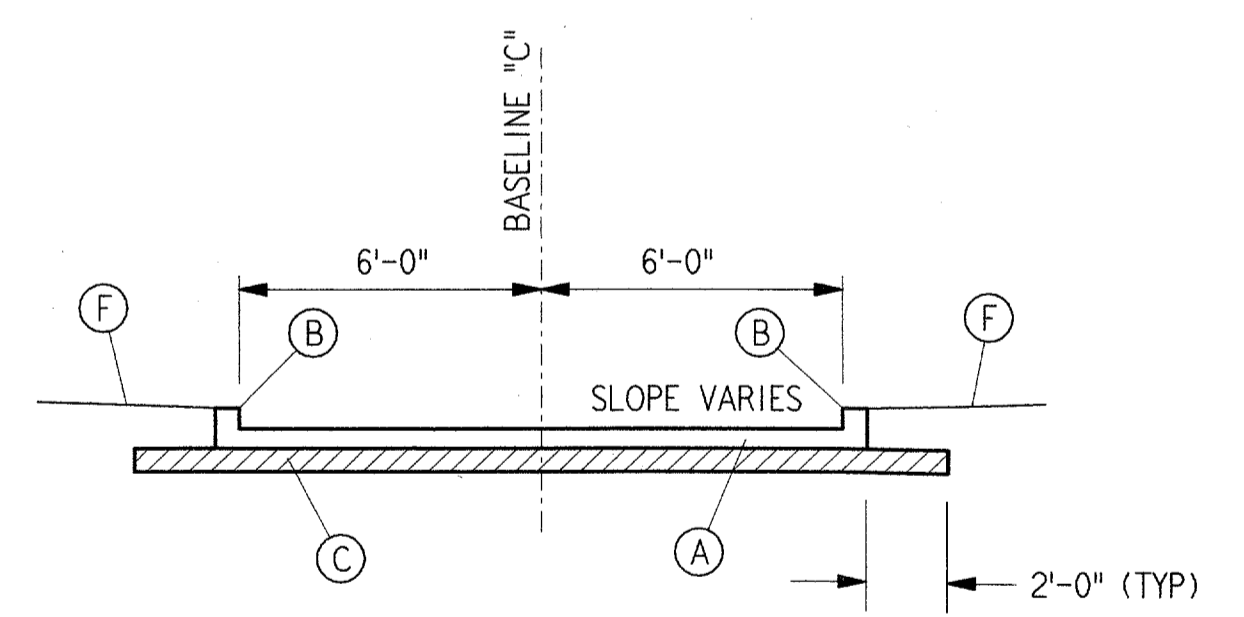
SECTION 6 REF C12 C05 NTS



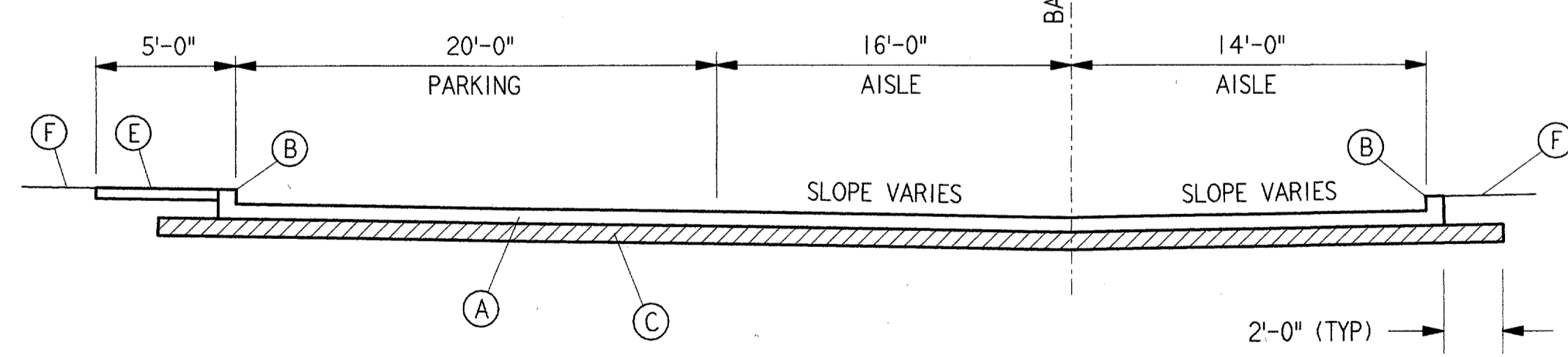
SECTION 3 REF C12 C05 NTS



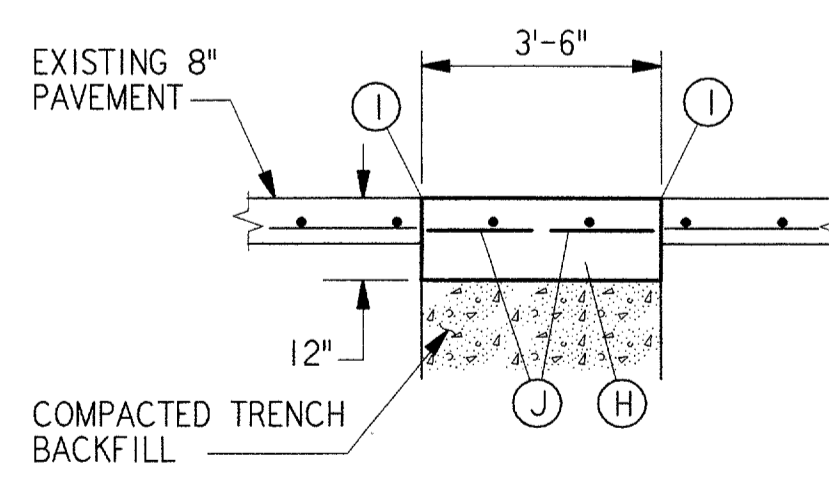
SECTION 7 REF C12 C05 NTS



SECTION 9 REF C12 C05 NTS



SECTION 4 REF C12 C05 NTS



SECTION 8 REF C12 C07 NTS

REV.	DATE	DESCRIPTION	DFTG.	CHECKED
 PARSONS DALLAS, TX				

C12

**DEPARTMENT OF TRANSPORTATION
FEDERAL AVIATION ADMINISTRATION**

SOUTHWEST REGION FORT WORTH, TEXAS

LOW ACTIVITY LEVEL
AIRPORT TRAFFIC CONTROL TOWER

TYPICAL PAVING SECTIONS

ADDISON (ADDISON AIRPORT) TEXAS

DESIGNED: R. YOUNG	ISSUED BY: AIRWAY FACILITIES DIVISION	DATE: 06-22-01
REVIEWED: L. POND	DRAWING NUMBER: ADS-ATCT- C12	
ORIG. DFT. : J. MILLER		
FACILITY:		