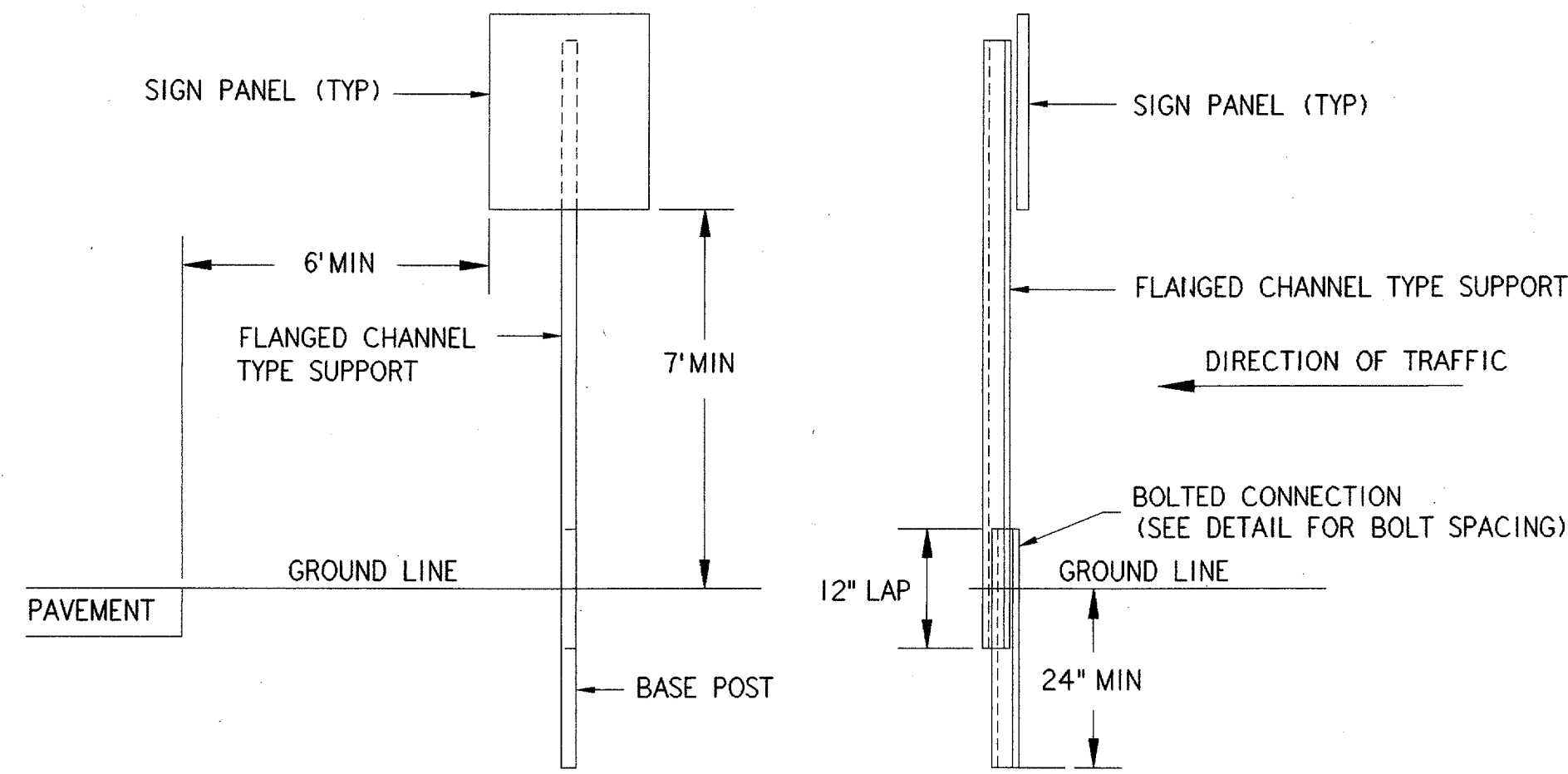


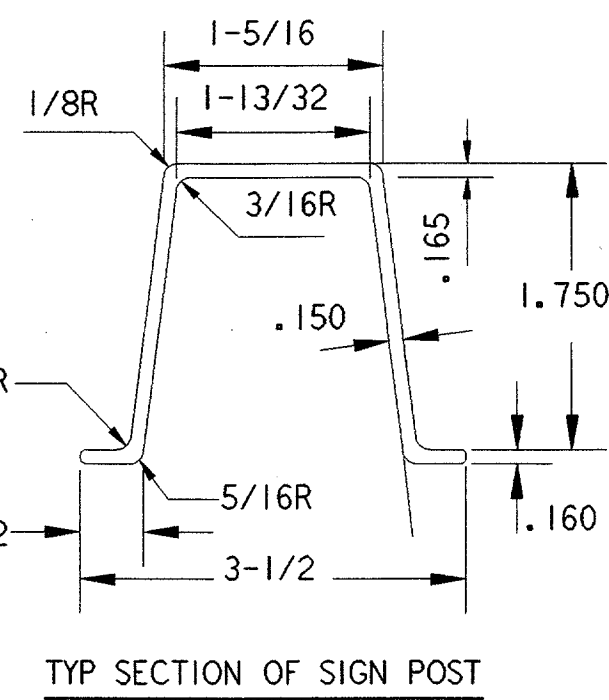
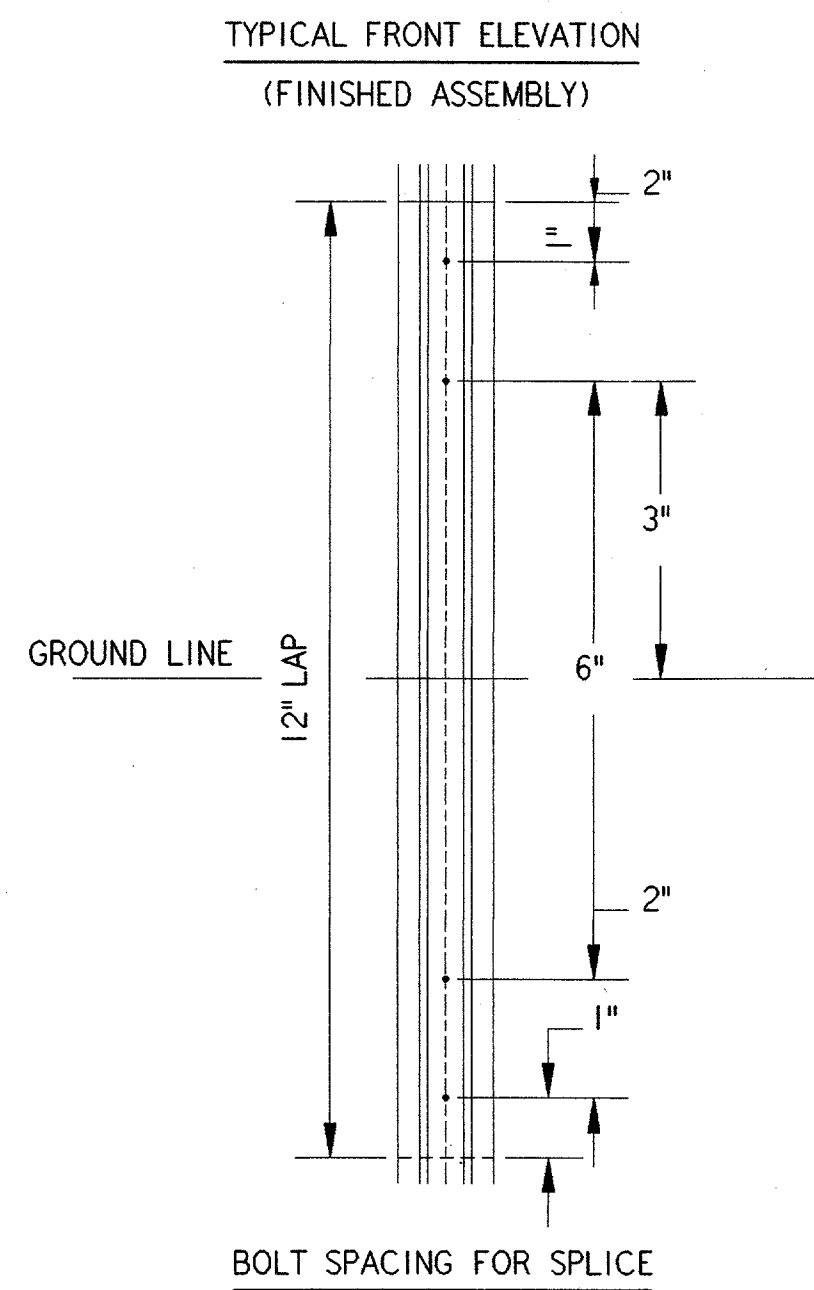
GENERAL NOTES FOR FLANGED CHANNEL TYPE SUPPORT

1. BASE POST AND SIGN POST SHALL BE FLANGED CHANNEL SECTION, HIGH STRENGTH RAIL STEEL MEETING REQUIREMENTS OF ASTM A499-81 MODIFIED TO 70,000 PSI MINIMUM YIELD STRENGTH.
2. THE FINISH FOR SIGN POST SHALL BE HOT DIP GALVANIZING MEETING REQUIREMENTS OF ASTM A123, A-525, G-90 SPECIFICATIONS OR BETTER. THE FINISH FOR THE BASE POST SHALL BE HOT DIP GALVANIZING MEETING REQUIREMENTS OF ASTM G-90 AND COATED WITH ONE MIL OF CLEAR APPROVED COATING, OR GALVANIZING IN ACCORDANCE WITH ASTM A-123. GALVANIZING SHALL BE APPLIED AFTER FABRICATION IS COMPLETED.
3. THE WEIGHT OF EACH BASE POST BEFORE PUNCHING SHALL BE 3.00 LB/FT, PLUS OR MINUS 3-1/2%. THE LENGTH OF THE BASE POST SHALL BE 3.5 FEET WITH AN ALLOWABLE TOLERANCE OF PLUS OR MINUS ONE INCH.
4. THE WEIGHT OF EACH SIGN POST BEFORE PUNCHING SHALL BE 3.00 LB/FT, PLUS OR MINUS 3-1/2%. POST LENGTHS SHALL BE IN 1.0 FOOT INCREMENTS THROUGH 15.00 FEET WITH A TOTAL LENGTH TOLERANCE OF PLUS OR MINUS 1.5 INCHES.
5. ALL POSTS SHALL BE MACHINE STRAIGHTENED AND HAVE A SMOOTH UNIFORM FINISH FREE FROM INJURIOUS DEFECTS AFFECTING STRENGTH OR APPEARANCE. BOLT HOLES OF 0.438 INCH DIAMETER SHALL BE CAREFULLY SPACED, VERTICALLY AND HORIZONTALLY, SO THAT HOLES WILL ALIGN FOR EASY ASSEMBLY. ALL BOLT HOLES AND SHEARED ENDS SHALL BE COMMERCIALY FREE FROM BURRS.
6. BOLTS AND NUTS SHALL BE HEX HEAD INTEGRAL FLANGE TYPE, 3/8 INCH BY 16 UNC. BOLTS - ASTM A354 GRADE BD. NUTS - ASTM A563 GRADE DH.
7. LOCKWASHERS SHALL BE 3/8 INCH EXTRA DUTY HELICAL SPRING. BOLTS, NUTS, AND LOCKWASHERS SHALL BE MECHANICALLY GALVANIZED TO ASTM B454-76, CLASS 25.
8. THE CONTRACTOR'S ATTENTION IS CALLED TO THE FACT THAT THE FLANGED CHANNEL SUPPORT MAY REQUIRE SIGN PANEL MOUNTING HOLES CONTRARY TO TYPICAL MANUFACTURED SPACINGS. THEREFORE, THE CONTRACTOR HAS THE OPTION TO USE A FLANGED CHANNEL SECTION WHICH DOES NOT HAVE PRE PUNCHED HOLES AND TO FIELD DRILL THE HOLES AT THE REQUIRED LOCATIONS.
9. INSTALLATION OF THE FLANGED CHANNEL SECTION SHALL CONSIST OF DRIVING THE BASE POST PLUMB AND TO THE SPECIFIED DEPTHS SHOWN. THE SIGN POST CAN THEN BE ATTACHED TO THE BASE POST WITH THE SLICE LENGTH AND BOLT SPACING SHOWN. THE SIGN PANEL IS FINALLY ATTACHED TO THE SIGN POST WITH A MAXIMUM BOLT SPACING OF 12 INCHES.

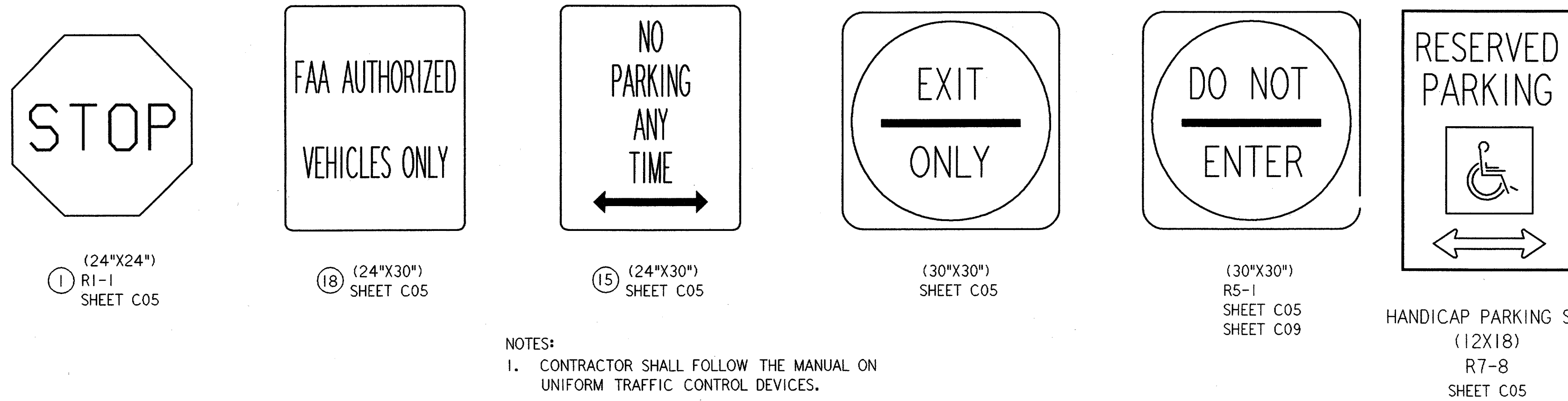


FLANGED CHANNEL PROPERTIES					
* WEIGHT PER FOOT	AREA	§ X-X AXIS		Y-Y AXIS	
3.00 LBS.	SQ. IN.	I (IN ⁴)	S (IN ³)	I (IN ⁴)	S (IN ³)
	.92	.40	.43	.87	.50

* ± 3 1/2 %
 § GOVERNING SECTION
 SECTION SHOWN MAY BE SLIGHTLY VARIED AS APPROVED BY THE ENGINEER IN WRITING.

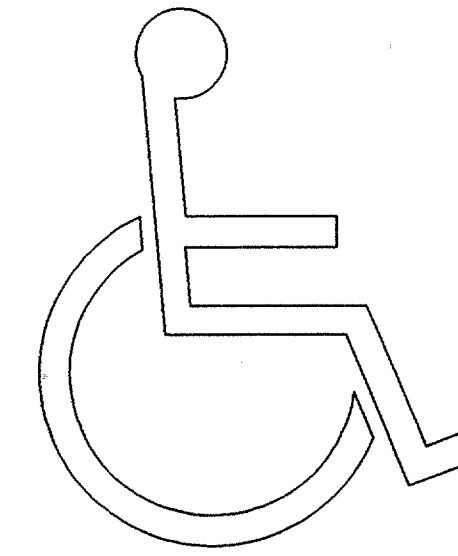


FLANGED CHANNEL TYPE SUPPORT FOR GUIDE SIGNS FOR TRAFFIC CONTROL



NOTES:
 1. CONTRACTOR SHALL FOLLOW THE MANUAL ON UNIFORM TRAFFIC CONTROL DEVICES.

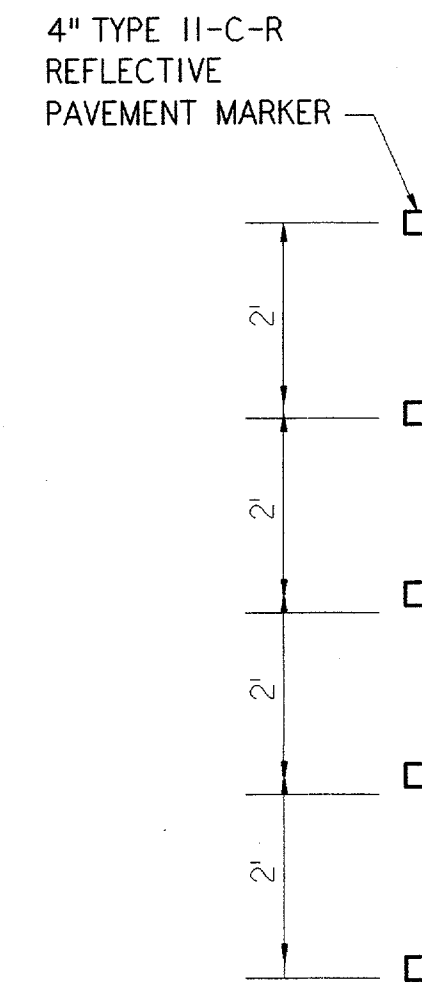
SIGN DETAILS NTS



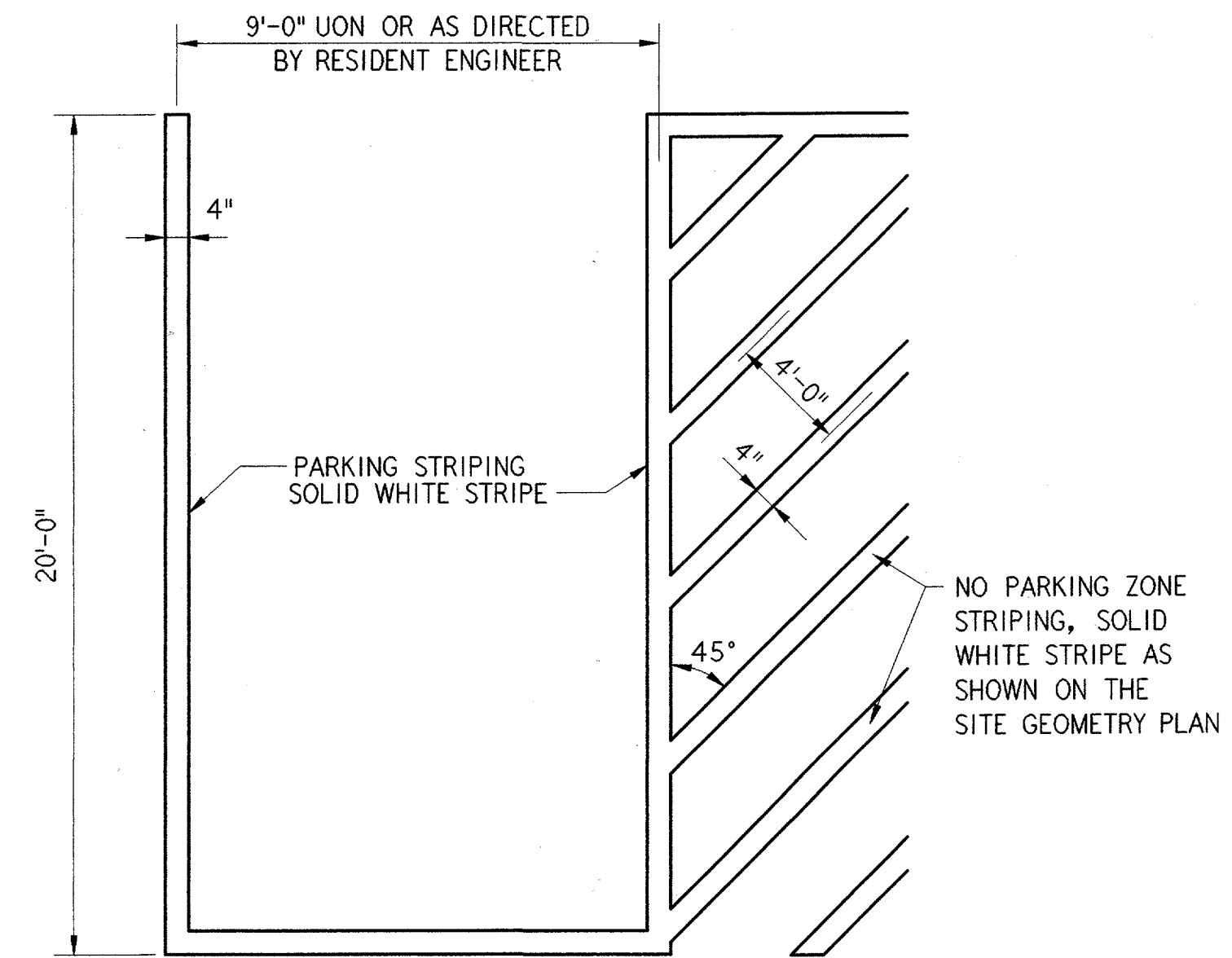
14 HANDICAP PAVEMENT MARKING NTS

NOTES:

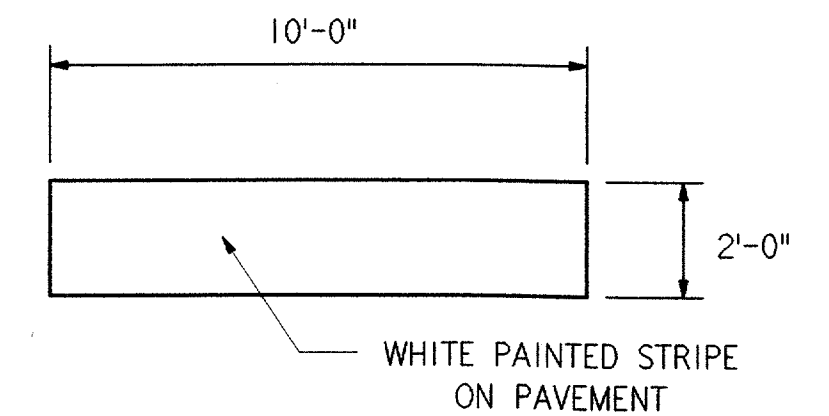
1. PAINT FOR STRIPING AND STOP BAR SHALL BE PROMAR TRAFFIC MARKING PAINT BY SHERWIN WILLIAMS OR APPROVED EQUAL. APPLY AS PER MANUFACTURER'S INSTRUCTIONS. APPLICATION RATE:
 PARKING STRIPING - 400 LF/GAL
 STREET STRIPING - 300 LF/GAL
2. PAVEMENT MARKERS SHALL BE ORIENTED WITH THE WHITE REFLECTOR FACING TRAFFIC.



MARKER DETAIL NTS



10X13 PARKING STRIPING DETAIL NTS



2 PAINTED STOP BAR DETAIL NTS

 RONALD A. YOUNG 6/26/01	 PARSONS DALLAS, TX
--------------------------------	----------------------------------

DEPARTMENT OF TRANSPORTATION FEDERAL AVIATION ADMINISTRATION SOUTHWEST REGION FORT WORTH, TEXAS	
LOW ACTIVITY LEVEL AIRPORT TRAFFIC CONTROL TOWER	
STRIPING/SIGNAGE DETAILS	
ADDISON (ADDISON AIRPORT) TEXAS SUBMITTED: SYSTEMS ENGINEER, ANI-640	APPROVED: MANAGER TERMINAL PLATFORM, ANI-640
DESIGNED: R. YOUNG REVIEWED: L. POND ORIG. DFT.: J. MILLER FACILITY:	ISSUED BY: AIRWAY FACILITIES DIVISION DATE: 06-22-01 DRAWING NUMBER: ADS-ATCT- C14