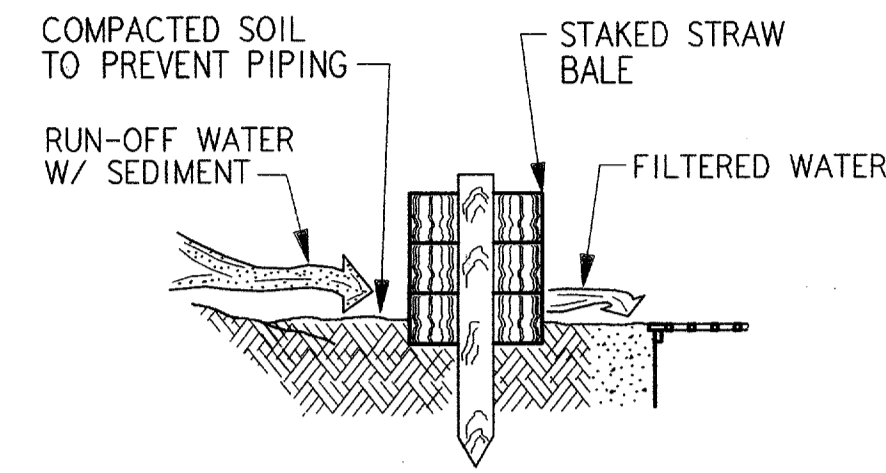
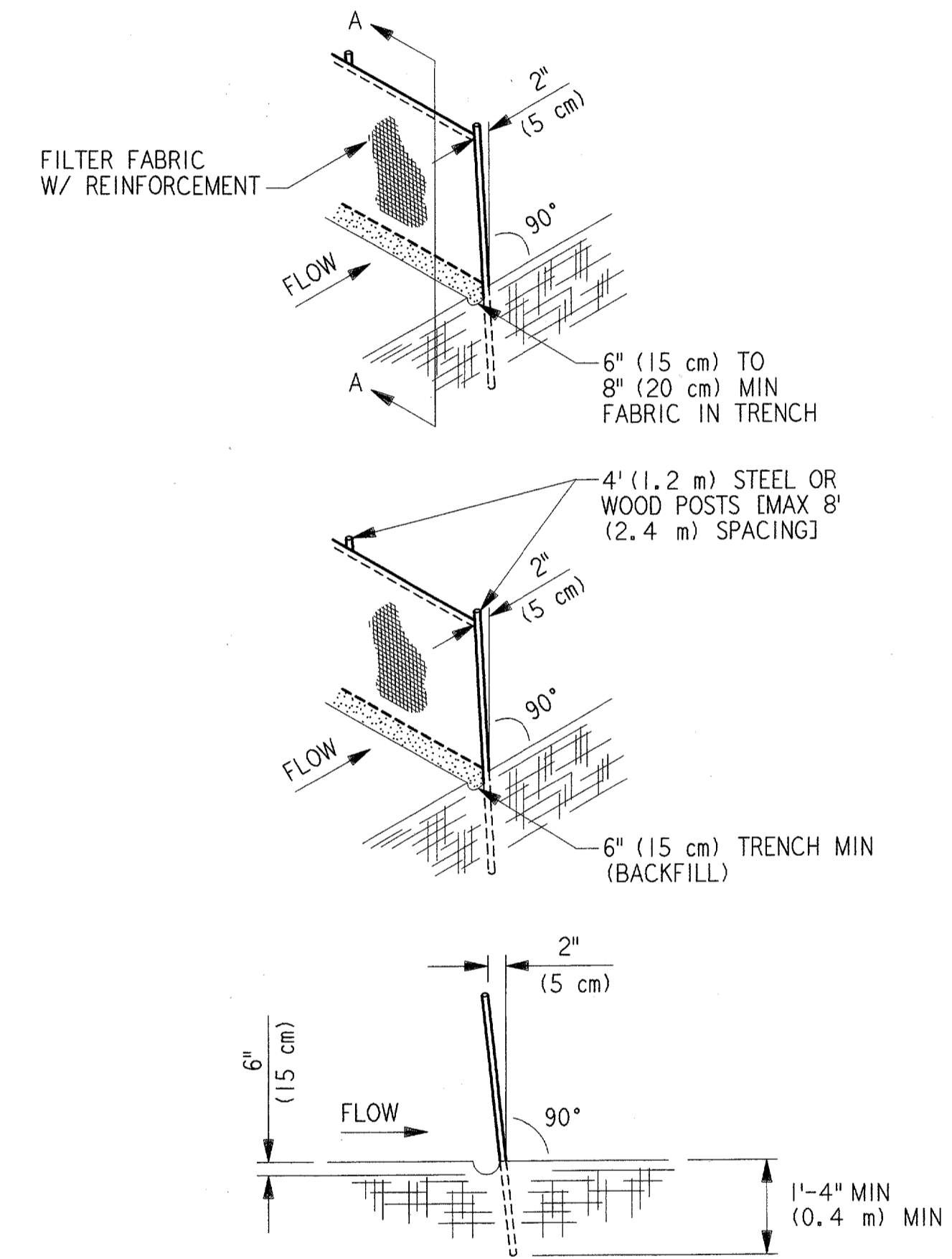


STRAW BALE SEDIMENT FILTER (SBSF)



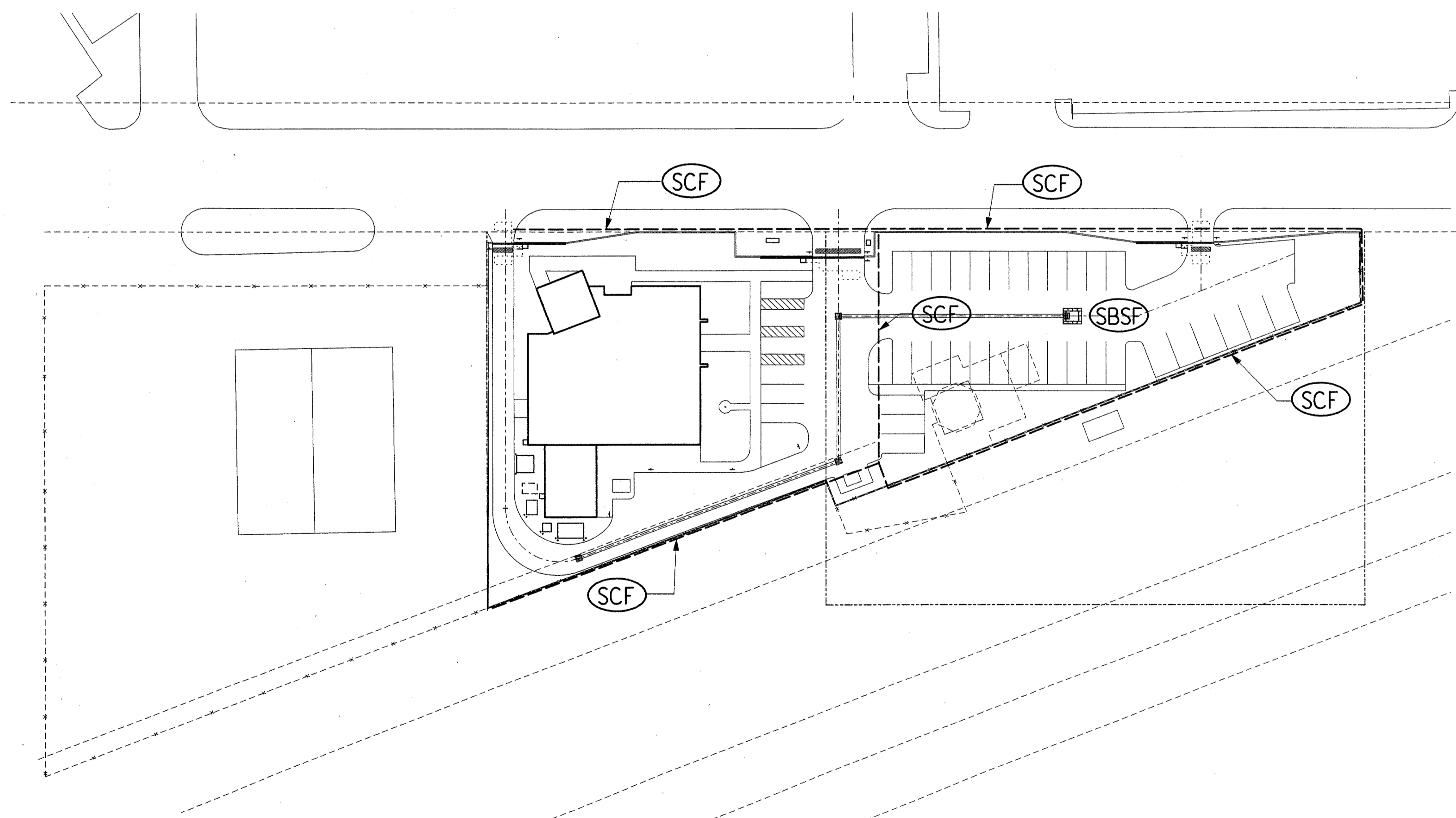
STABILIZED CONSTRUCTION ENTRANCE (SCE)



REINFORCEMENT AND FILTER FABRIC TO BE ATTACHED AS DIRECTED BY THE RESIDENT ENGINEER.

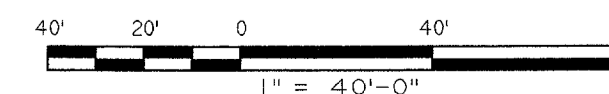
SEDIMENT CONTROL FENCE (SCF)

NOTE: POULTRY NETTING SHALL NOT BE ALLOWED AS REINFORCEMENT MATERIAL.



SITE PLAN

1" = 40'



GENERAL NOTES:

1. INSTALL SEDIMENT CONTROL FENCE PRIOR TO ANY CLEARING OR EXCAVATION.
2. MAINTAIN STRAW BALE SEDIMENT FILTER AROUND INLETS DURING GRADING AND RELOCATE TO NEW INLET LOCATIONS AS THEY ARE COMPLETED.
3. DURING CONSTRUCTION OF THE DOUBLE 66" DIA PIPE, MAINTAIN EROSION CONTROL MEASURES.
4. PROVIDE MIN ONE (1) STABILIZED CONSTRUCTION ENTRANCE AT LOCATIONS DESIGNATED BY RESIDENT ENGINEER.

KEYED NOTES:

- ① SEDIMENT CONTROL FENCE SEE DETAIL THIS SHEET.
- ② STRAW BALE SEDIMENT FILTER SEE DETAIL THIS SHEET.

C19

<p>DEPARTMENT OF TRANSPORTATION FEDERAL AVIATION ADMINISTRATION</p> <p>SOUTHWEST REGION FORT WORTH, TEXAS</p> <p>LOW ACTIVITY LEVEL AIRPORT TRAFFIC CONTROL TOWER</p> <p>EROSION CONTROL PLAN</p>	
<p>ADDISON (ADDISON AIRPORT) TEXAS</p> <p>SUBMITTED: <i>[Signature]</i> SYSTEMS ENGINEER, ANI-640</p> <p>DESIGNED: R. YOUNG REVIEWED: L. POND ORIG. DFT.: J. MILLER FACILITY:</p>	<p>APPROVED: <i>[Signature]</i> MANAGER TERMINAL PLATFORM, ANI-640</p> <p>ISSUED BY: AIRWAY FACILITIES DIVISION</p> <p>DATE: 06-22-01 DRAWING NUMBER: ADS-ATCT- C19</p>

