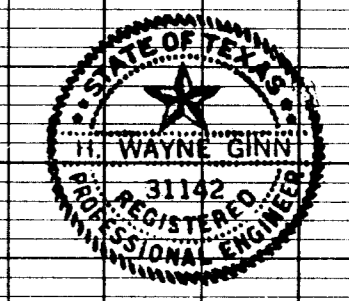
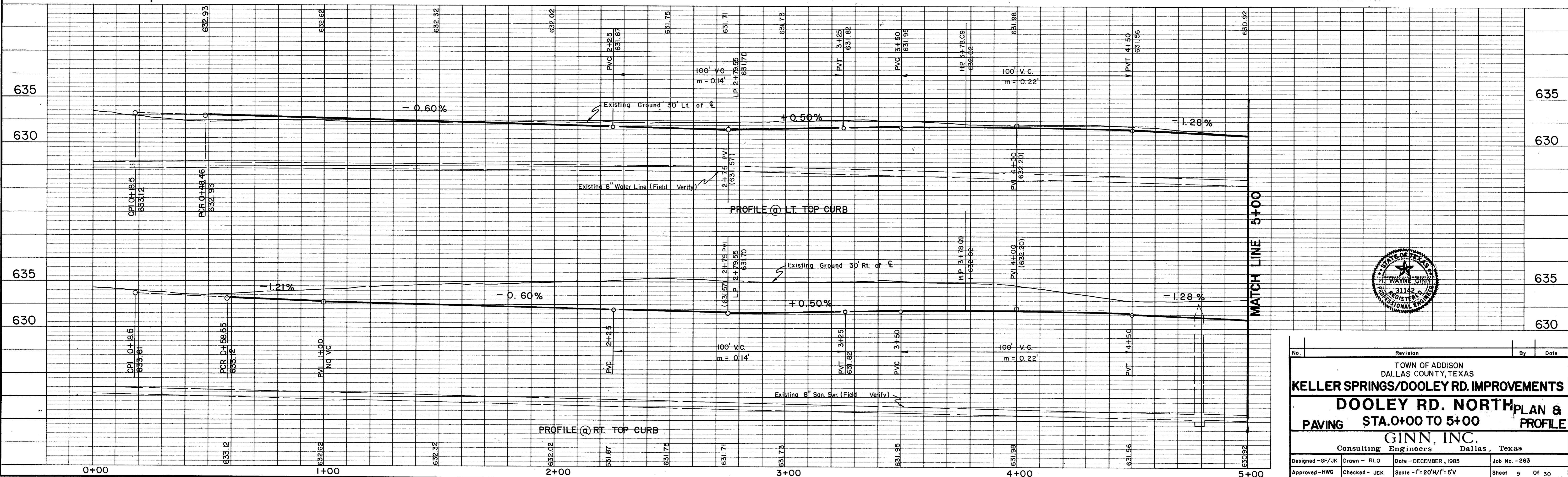


TBM - "□" cut on N.W. top curb, corner of parking lot, Building 15950 Midway Road, Elevation 634.57



No.	Revision	By	Date
TOWN OF ADDISON DALLAS COUNTY, TEXAS			
KELLER SPRINGS/DOOLEY RD. IMPROVEMENTS			
DOOLEY RD. NORTH PLAN & PAVING STA. 0+00 TO 5+00 PROFILE			
GINN, INC. Consulting Engineers Dallas, Texas			
Designed - GF/JK	Drawn - RLO	Date - DECEMBER, 1985	Job No. - 263
Approved - HWG	Checked - JCK	Scale - 1" = 20'H/1" = 5'V	Sheet 9 Of 30