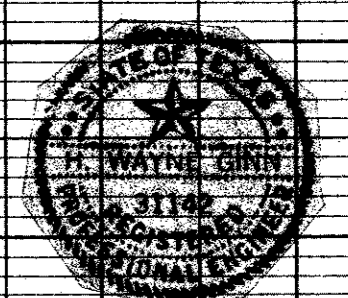
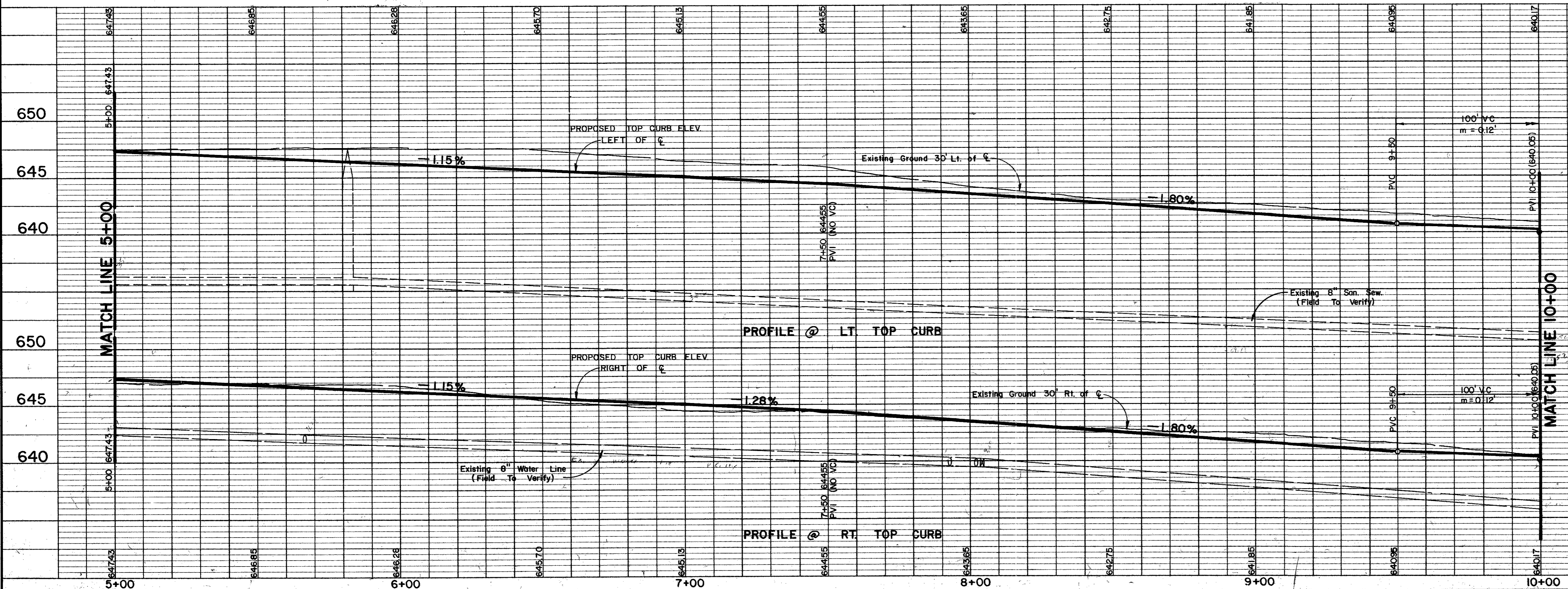


1-08-0002 J R Callender

1-08-0001 Metrocon Const.

TBM - " " cut on S.E. top curb corner, the back side parking lot, Building 15900 Midway Road. Elevation 637.75



No.	Revision	By	Date
TOWN OF ADDISON DALLAS COUNTY, TEXAS			
<b>KELLER SPRINGS/DOOLEY RD. IMPROVEMENTS</b>			
<b>DOOLEY ROAD PLAN &amp; PROFILE</b>			
<b>PAVING STA 5+00 TO 10+00</b>			
<b>GINN, INC.</b>			
Consulting Engineers Dallas, Texas			
Designed - GF/JK	Drawn - RLO	Date - DECEMBER, 1985	Job No. - 263
Approved - HWG	Checked - JCK	Scale - 1" = 20'H / 1" = 5'V	Sheet 5 OF 30