

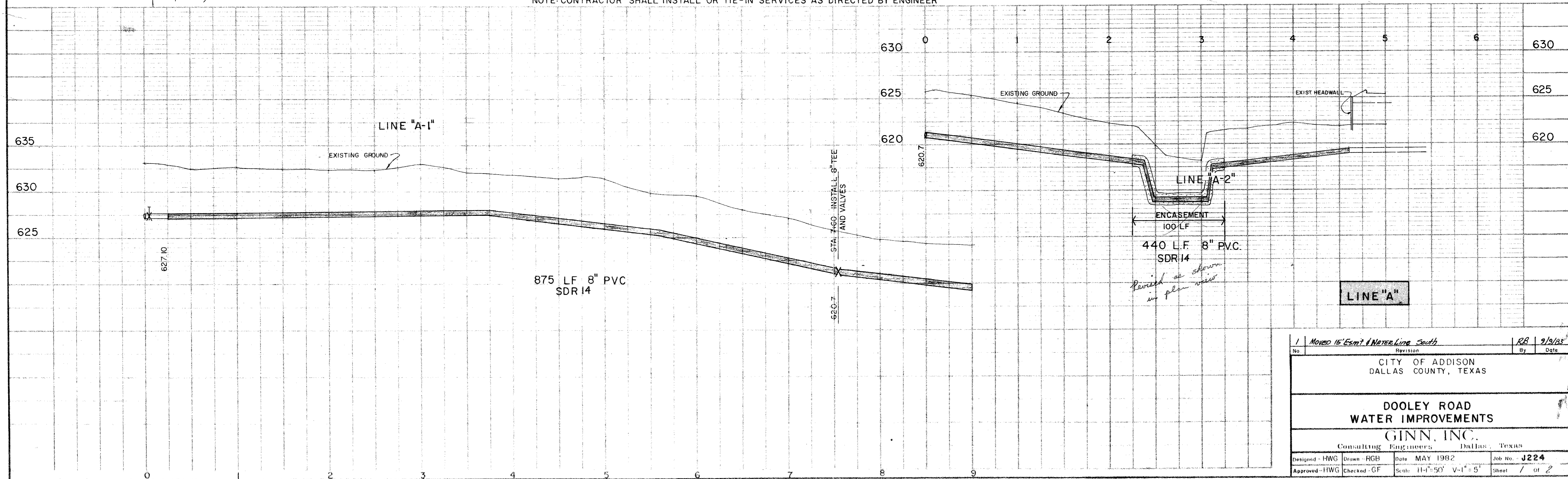
*Changed location in the field as shown*

*services added as shown on meter box and driveway approach*

*CONCRETE ENCASMENT REV'D AS SHOWN*

FOR MISC. DETAIL SEE SHT. 2

NOTE: CONTRACTOR SHALL INSTALL OR TIE-IN SERVICES AS DIRECTED BY ENGINEER



1 Moved 15' Esm't Water Line South		RB	9/9/83
No.	Revision	By	Date
CITY OF ADDISON DALLAS COUNTY, TEXAS			
<b>DOOLEY ROAD WATER IMPROVEMENTS</b>			
<b>GINN, INC.</b> Consulting Engineers Dallas, Texas			
Designed - HWG	Drawn - RGB	Date - MAY 1982	Job No. - J224
Approved - HWG	Checked - GF	Scale - H=1"=50' V=1"=5'	Sheet 1 of 2