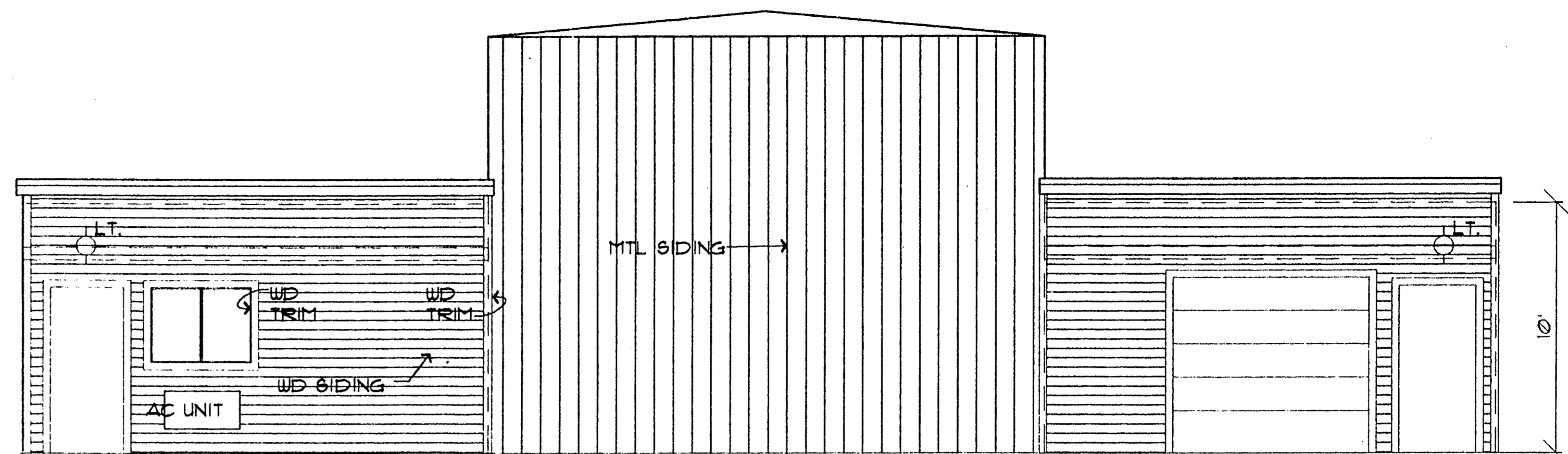
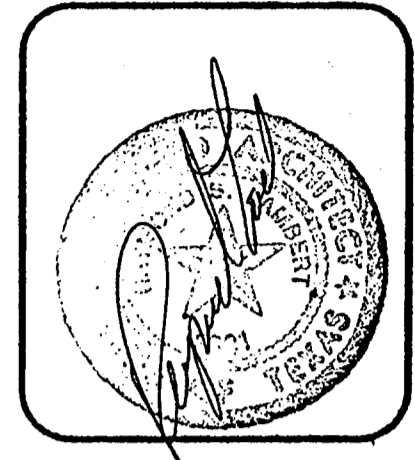


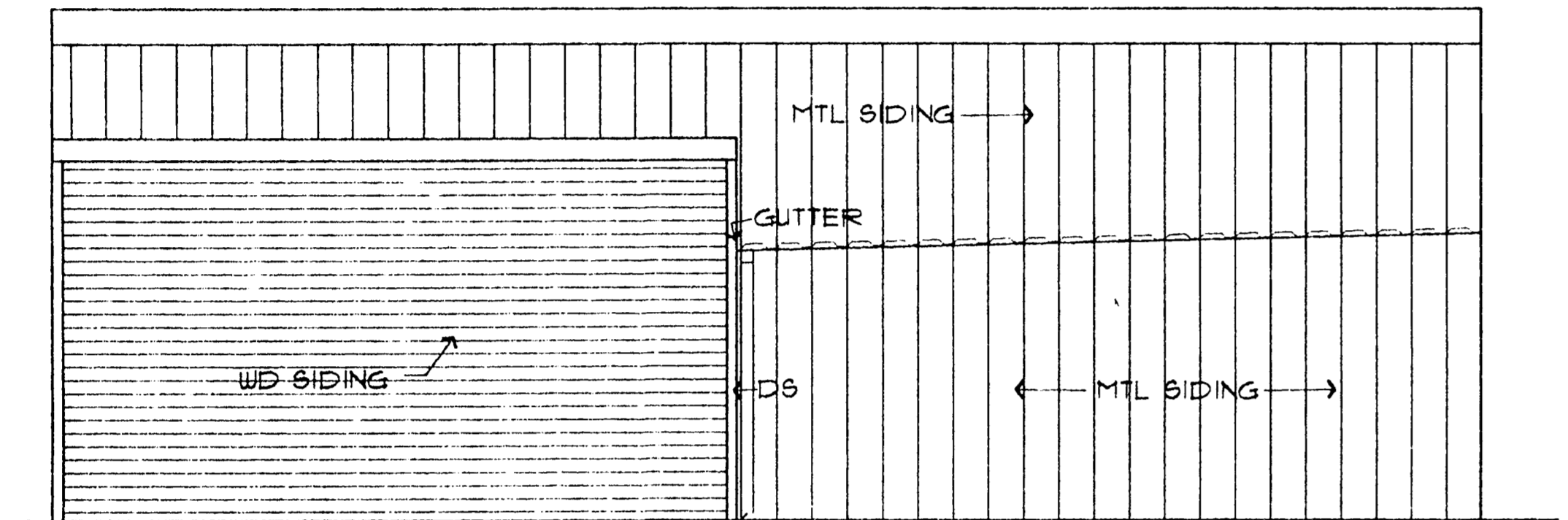
FIXTURE SCHEDULE	
A	2x4 440 SURFACE MTD LITHONIA 440A, WRAPAROUND W/ ACRYLIC LENS, 120 VOLT ENERGY SAVING BALLAST, W/ FOUR (4) #F40CW LAMPS, TOTAL 200 WATTS
B	JJNO # F8332 (2 LAMP) CHAIN SUSPENDED 8' ECONOMY INDUSTRIAL
C	PROGRESS P3078 WALL BRACKET, BLACK, 75 WATT 75 WATT FLOOD LAMP
D	PROGRESS P3608, 2 - 60 WATT BULB, WALL MT
V	BROAN B36 EXHAUST FAN VENT 4 SWITCH
F	POLE LITE EXCELNCE 8X8X603-1A, 1000 WATT METAL HALIDE ON 20' POLE

drawn by	RSL	8/25/91
checked by		date
issued		date
		9/11/91

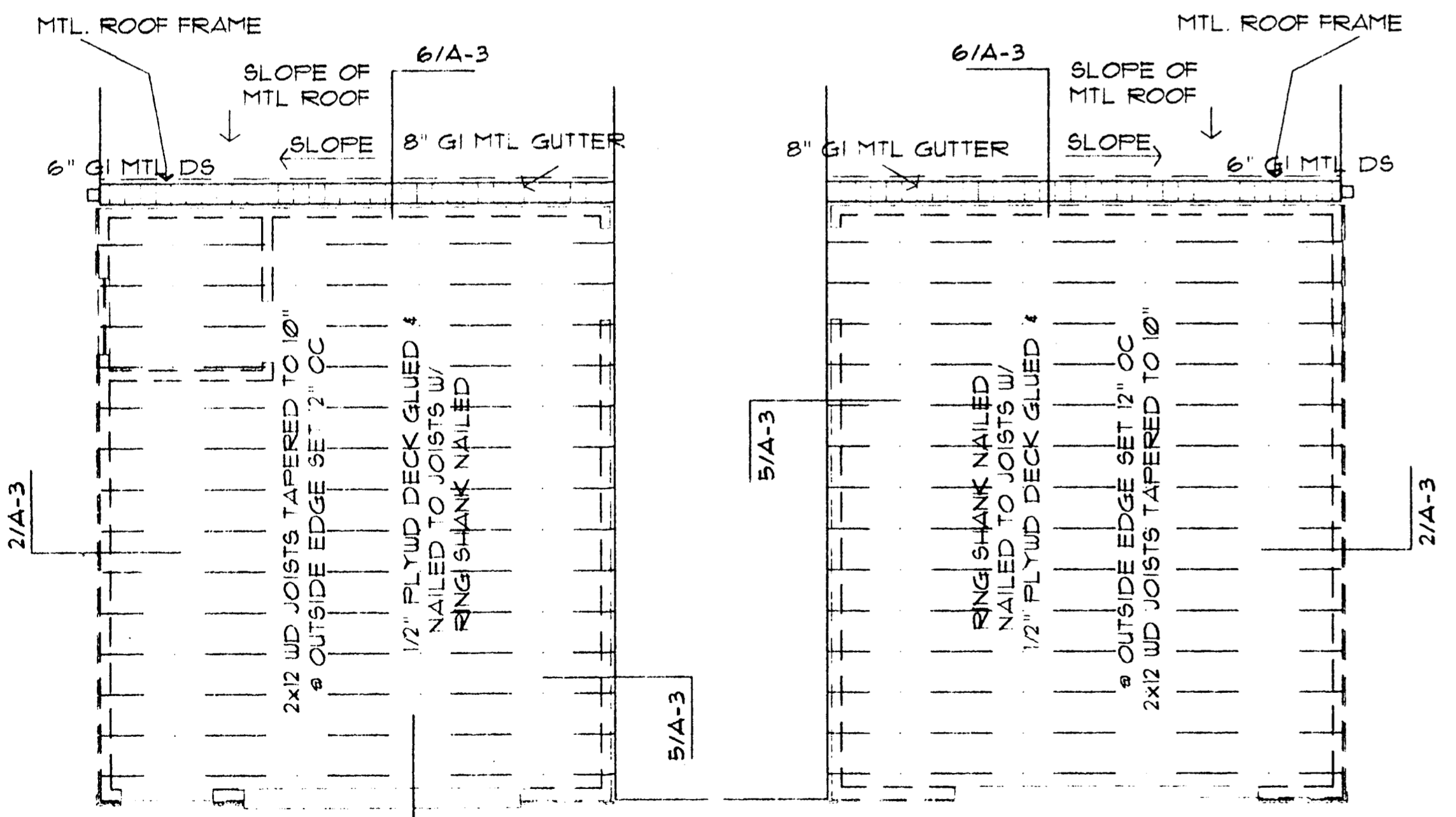
revisions	date



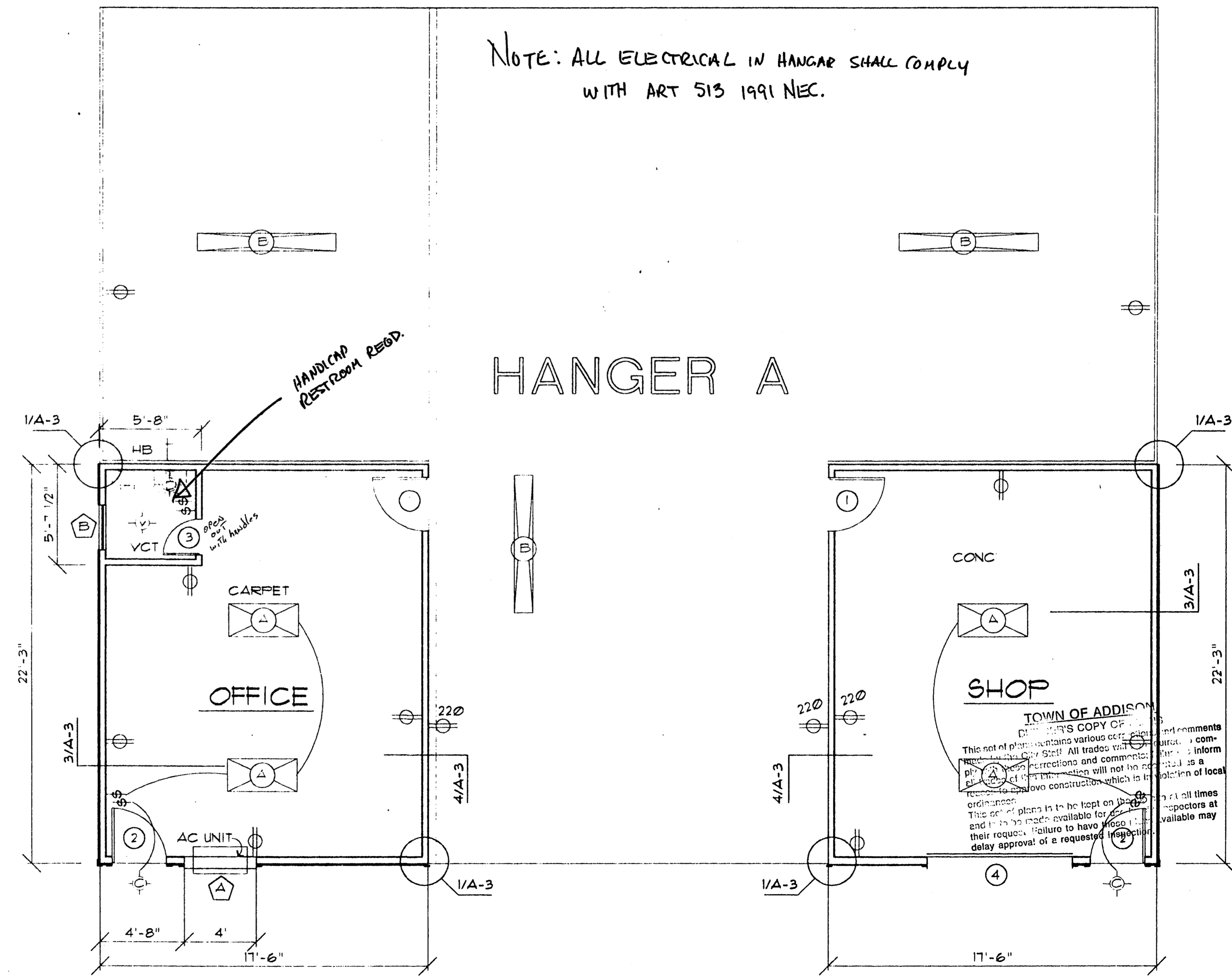
**(B) FRONT ELEVATION**  
SCALE 1/4" = 1' - 0"



**(A) SHOP SIDE ELEVATION OPPOSITE SIDE SIM/W WINDOW**  
SCALE 1/4" = 1' - 0"



**ROOF FRAMING PLAN**  
SCALE 1/4" = 1' - 0"



**FLOOR PLAN**  
SCALE 1/4" = 1' - 0"

HANGER MODIFICATIONS  
326 NEW RICKENBACKER DRIVE  
ADDISON AIRPORT  
ADDISON, DALLAS COUNTY, TEXAS

**raymond s. lambert & associates**  
architect-planners  
12240 inwood road  
suite 201  
dallas, texas 75244  
972 387-4286

title

sheet no.  
**A-1**

HANGER A