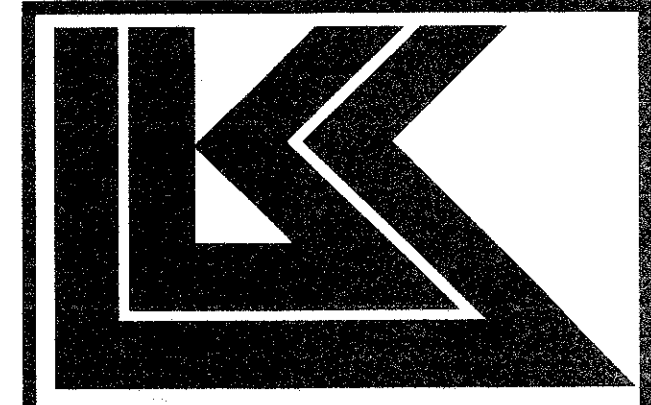
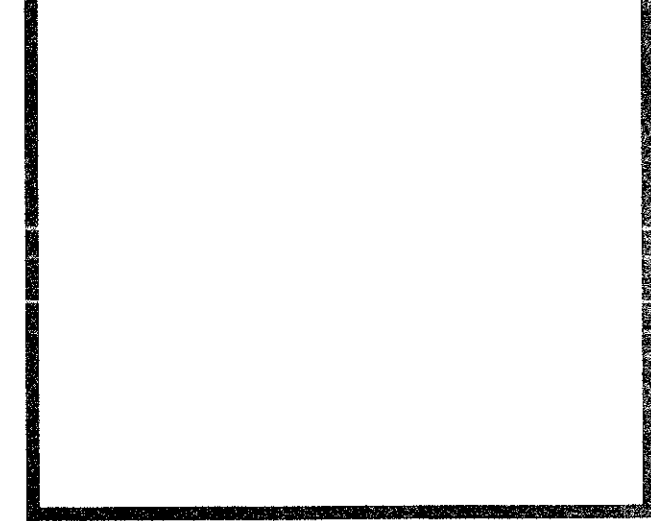


PRINTS ISSUED		
DATE	PURPOSE	NO.

FOR CONSTRUCTION		
REVISIONS		
DATE	ITEM	NO.



LAW/KINGDON, INC.
ARCHITECTS & ENGINEERS
345 RIVERVIEW, WICHITA, KS 67203
Phone (316) 268-9200, Fax (316) 268-9205
Copyright © 1996



DRAWN	CHECKED
BB	JAK

RELATED DRAWINGS

SHELL	
DETAILS	
STRUCTURE	
MECHANICAL	
ELECTRICAL	
OTHER	

SEQUENCE NUMBER

OF _____ SHEETS

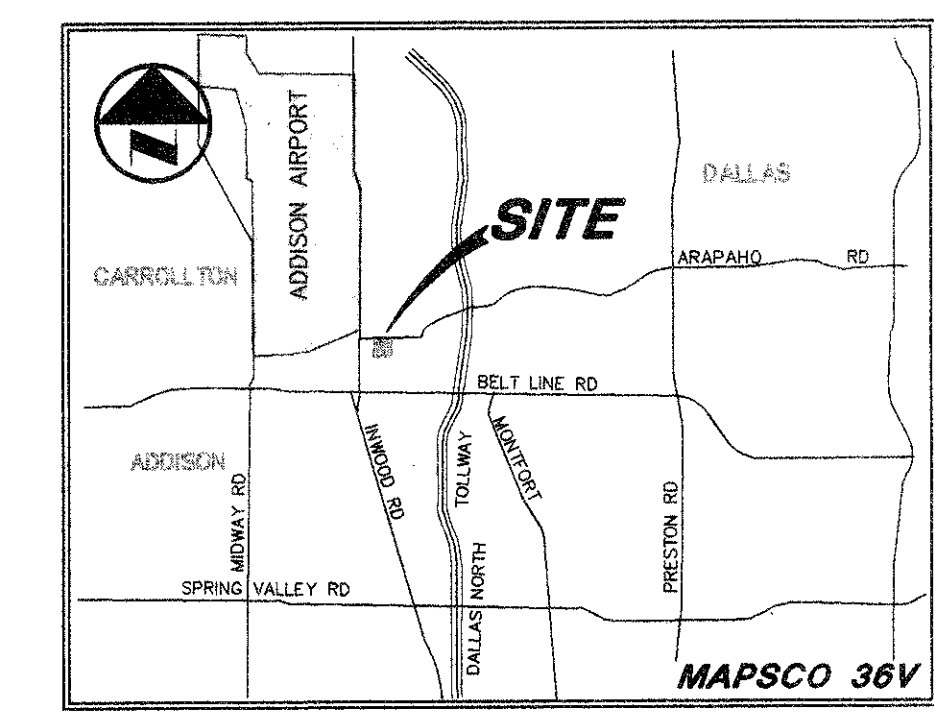
SUMMERFIELD SUITES HOTEL
ADDISON, TEXAS

PROJECT NUMBER 94780

DRAINAGE PLAN
SHEET TITLE
SHEET NUMBER

C-3

3 OF 7 SHEETS



VICINITY MAP

CAUTION!!!
GAS LINE IN AREA—CONTACT LONE STAR GAS 48 HOURS PRIOR TO CONSTRUCTION PHONE: (214)263-3444

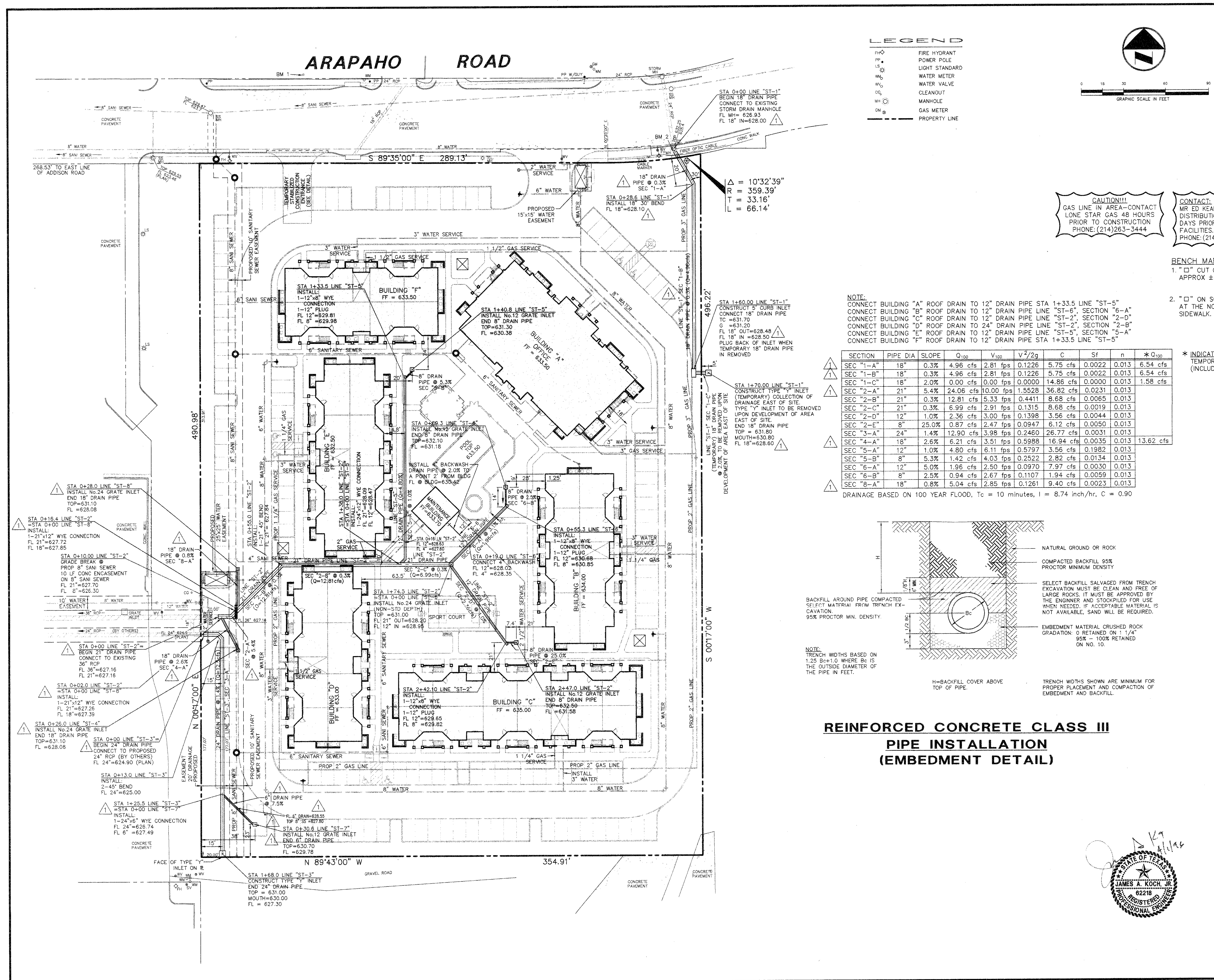
CONTACT:
MR ED REAH, OPERATING SUPPORT SECTION DISTRIBUTION DEPARTMENT, 2 WORKING DAYS PRIOR TO EXCAVATING T.U. ELECTRIC FACILITIES. PHONE: (214)698-7239 OR (214)698-7207

CAUTION!!!
UNDERGROUND TELEPHONE IN AREA - CONTACT S.W.B.T. 48 HOURS PRIOR TO CONSTRUCTION PHONE: (214)698-7239 (UNDERGROUND) PHONE: (214)698-7240 (OVER-HEAD)

BENCH MARKS:

- "D" CUT ON S.E. CORNER OF SIDEWALK AT THE ENTRANCE TO 4805 ARAPAHO RD. APPROX ±400 FEET EAST OF ADDISON RD. ELEV. 630.66
- "D" ON SOUTH RIM OF MANHOLE LOCATED ON THE SOUTH SIDE OF ARAPAHO RD AT THE NORTHEAST CORNER OF THE SITE, APPROX. 16.5' EAST OF THE WEST END OF SIDEWALK. ELEV. 632.25

- LEGEND**
- THO FIRE HYDRANT
 - PP POWER POLE
 - LS LIGHT STANDARD
 - WM WATER METER
 - WV WATER VALVE
 - CL CLEANOUT
 - MH MANHOLE
 - GM GAS METER
 - PROPERTY LINE

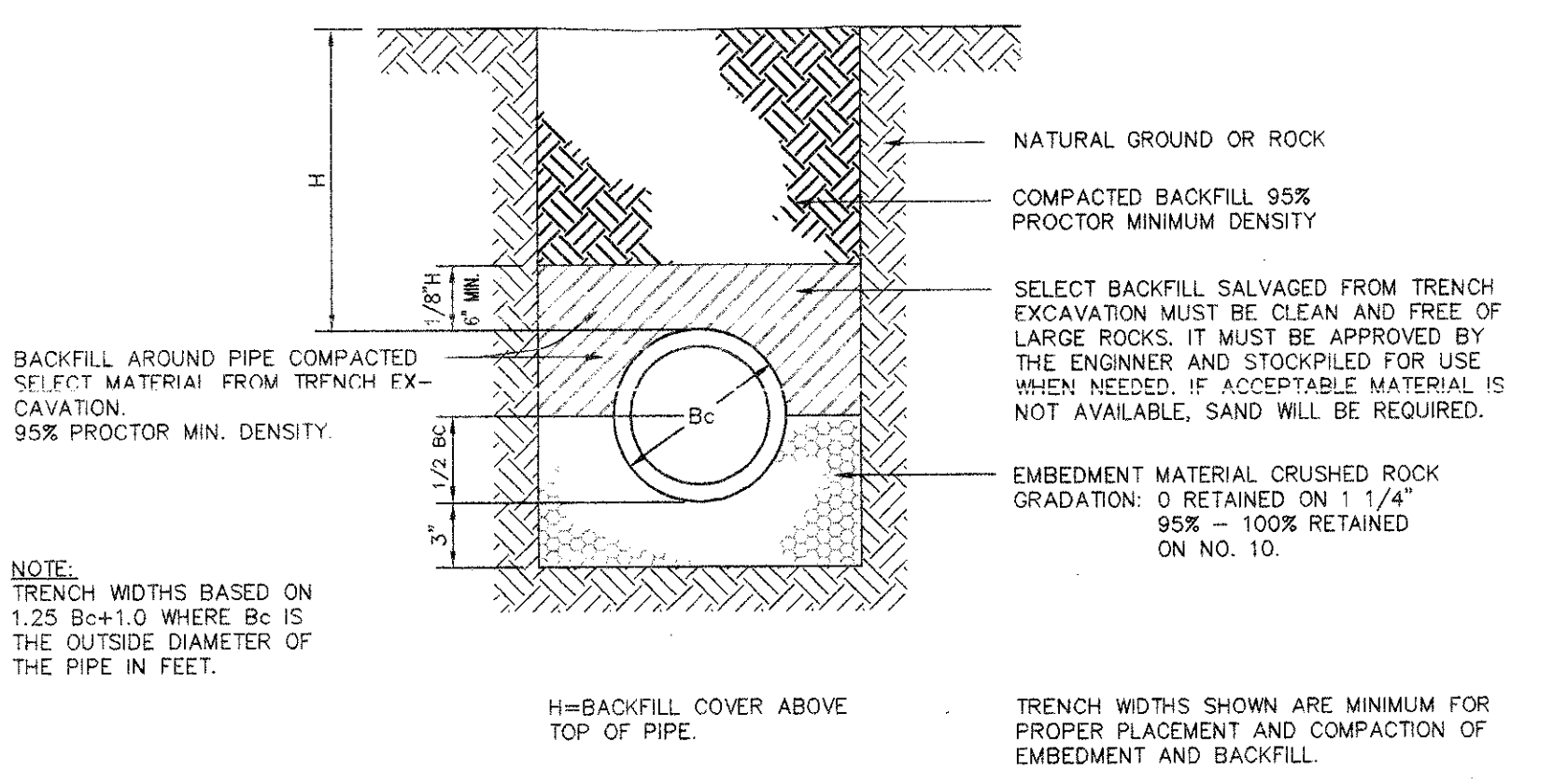


NOTE:
CONNECT BUILDING "A" ROOF DRAIN TO 12" DRAIN PIPE STA 14-33.5 LINE "ST-5"
CONNECT BUILDING "B" ROOF DRAIN TO 12" DRAIN PIPE LINE "ST-6", SECTION "6-A"
CONNECT BUILDING "C" ROOF DRAIN TO 12" DRAIN PIPE LINE "ST-2", SECTION "2-D"
CONNECT BUILDING "D" ROOF DRAIN TO 24" DRAIN PIPE LINE "ST-2", SECTION "2-B"
CONNECT BUILDING "E" ROOF DRAIN TO 12" DRAIN PIPE LINE "ST-5", SECTION "5-A"
CONNECT BUILDING "F" ROOF DRAIN TO 12" DRAIN PIPE STA 14-33.5 LINE "ST-5"

SECTION	PIPE DIA	SLOPE	Q ₁₀₀	V ₁₀₀	V ² /2g	C	Sf	n	*Q ₁₀₀
SEC "1-A"	18"	0.3%	4.96 cfs	2.81 fps	0.1226	5.75 cfs	0.0022	0.013	6.54 cfs
SEC "1-B"	18"	0.3%	4.96 cfs	2.81 fps	0.1226	5.75 cfs	0.0022	0.013	6.54 cfs
SEC "1-C"	18"	2.0%	0.00 cfs	0.00 fps	0.0000	14.86 cfs	0.0000	0.013	1.58 cfs
SEC "2-A"	21"	3.4%	24.06 cfs	10.00 fps	1.5528	36.82 cfs	0.0231	0.013	
SEC "2-B"	21"	0.3%	12.81 cfs	5.33 fps	0.4411	8.68 cfs	0.0065	0.013	
SEC "2-C"	21"	0.3%	6.99 cfs	2.91 fps	0.3315	8.68 cfs	0.0019	0.013	
SEC "2-D"	12"	1.0%	2.36 cfs	3.00 fps	0.1398	3.56 cfs	0.0044	0.013	
SEC "2-E"	8"	25.0%	0.87 cfs	2.47 fps	0.0947	6.12 cfs	0.0050	0.013	
SEC "3-A"	24"	1.4%	12.90 cfs	3.98 fps	0.2460	26.77 cfs	0.0031	0.013	
SEC "4-A"	18"	2.6%	6.21 cfs	3.51 fps	0.5988	16.94 cfs	0.0035	0.013	13.62 cfs
SEC "5-A"	12"	1.0%	4.80 cfs	6.11 fps	0.5797	3.56 cfs	0.1982	0.013	
SEC "5-B"	8"	5.3%	1.42 cfs	4.03 fps	0.2322	2.82 cfs	0.0134	0.013	
SEC "6-A"	12"	5.0%	1.96 cfs	2.50 fps	0.0970	7.97 cfs	0.0030	0.013	
SEC "6-B"	8"	2.5%	0.94 cfs	2.67 fps	0.1107	1.94 cfs	0.0059	0.013	
SEC "8-A"	18"	0.8%	5.04 cfs	2.85 fps	0.1261	9.40 cfs	0.0023	0.013	

* INDICATES TEMPORARY RUNOFF CALCULATION (INCLUDES DA#15 OR DA#16)

NOTE:
DRAINAGE BASED ON 100 YEAR FLOOD, T_c = 10 minutes, I = 8.74 inch/hr, C = 0.90



RECORD DRAWING

THIS DRAWING HAS BEEN REVISED TO REFLECT CONSTRUCTION RECORDS MAINTAINED AND PROVIDED BY THE CONTRACTOR FOR THIS PROJECT.

CONTRACTOR: SOUTHERN MECHANICAL PLUMBING, INC.
400 S. ASTON
SUNNYVALE, TEXAS 75182

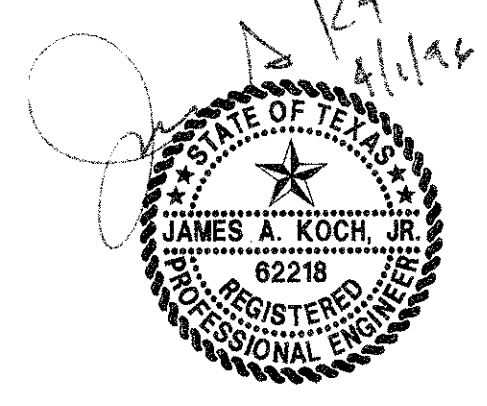
DATE REVISED: 29 MARCH 1996

PACHECO KOCH Consulting Engineers, Inc.
Civil Engineering • Land Surveying

9401 LBJ Freeway, Suite 300
Dallas, Texas 75243
(214) 235-3031

DRAINAGE PLAN
SUMMERFIELD SUITES HOTEL
ARAPAHO ROAD
QUORUM CENTER ADDITION
TOWN OF ADDISON, TEXAS

DESIGN	DRAWN	DATE	SCALE	NOTES	FILE	NO.
JAK	BB	5-3-95	1"=30'			



PK NO: 1467-95.011 DWG NO: 1467-03C