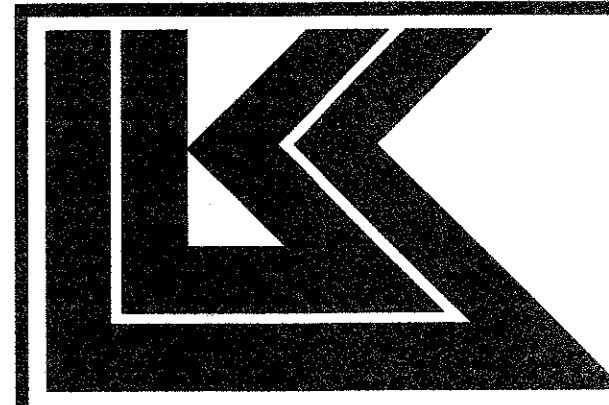


PRINTS ISSUED		
DATE	PURPOSE	NO.

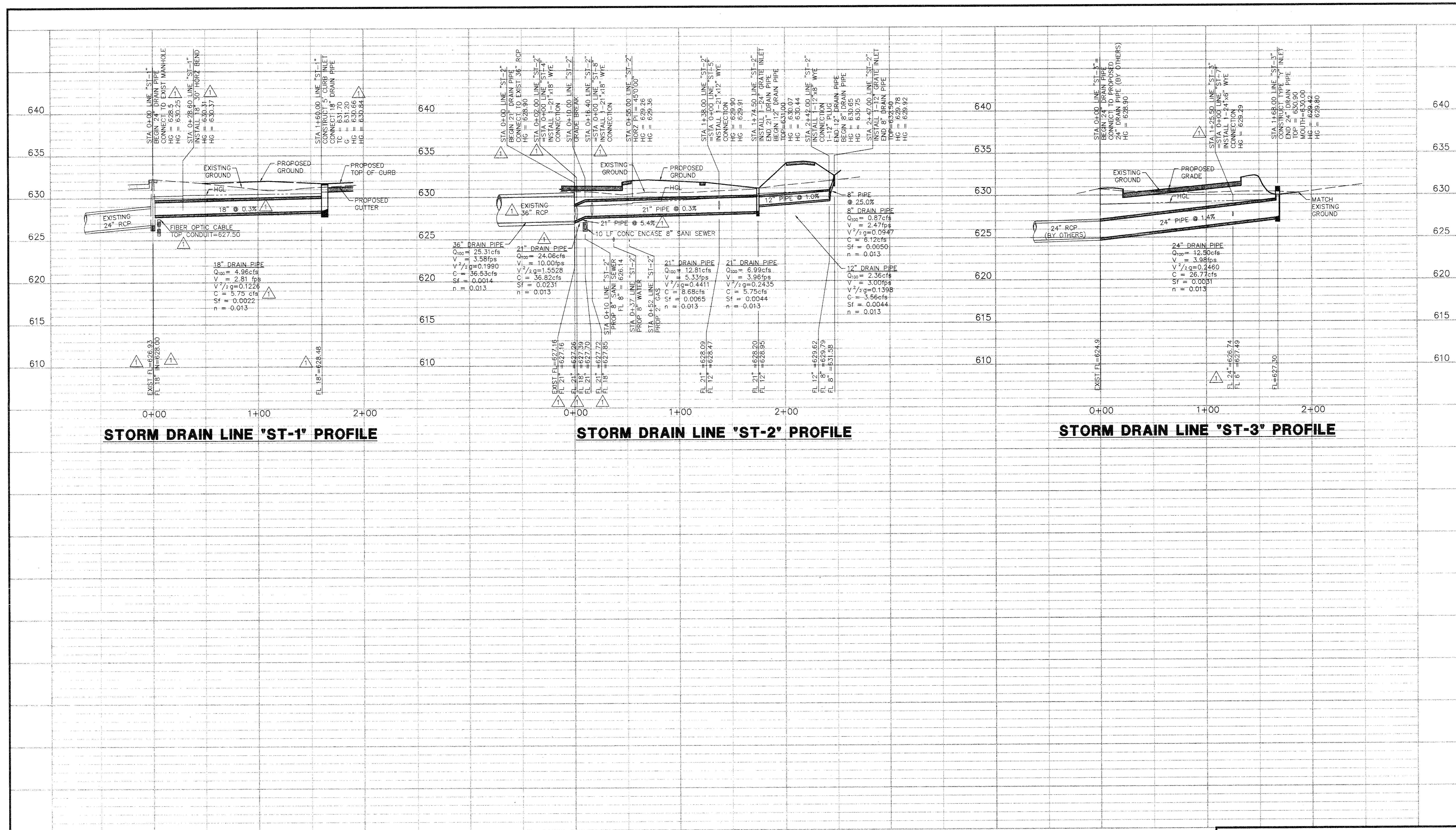
FOR CONSTRUCTION:		
REVISIONS		
DATE	ITEM	NO.



LAW/KINGDON, INC.
ARCHITECTS & ENGINEERS
345 RIVERVIEW, WICHITA, KS 67203
Phone (316) 268-6230 Fax (316) 268-6230
Copyright © 1994

DRAWN	CHECKED
BB	JAK
RELATED DRAWINGS	
SHELL	
DETAILS	
STRUCTURE	
MECHANICAL	
ELECTRICAL	
OTHER	
SEQUENCE NUMBER	
OF _____ SHEETS	

SUMMERFIELD SUITES HOTEL
ADDISON, TEXAS
PROJECT NUMBER 94780



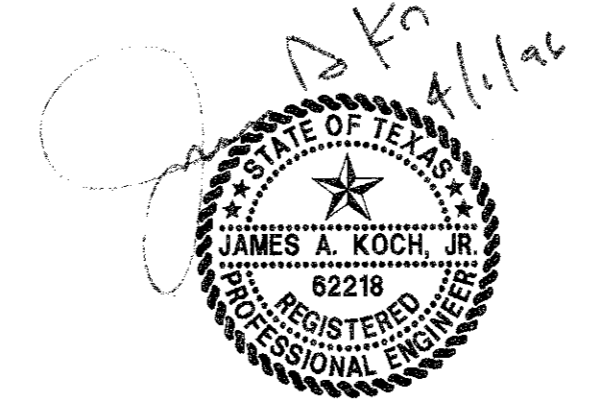
STORM DRAIN LINE 'ST-1' PROFILE

STORM DRAIN LINE 'ST-2' PROFILE

STORM DRAIN LINE 'ST-3' PROFILE

BENCH MARKS:
1. "B" CUT ON S.E. CORNER OF SIDEWALK AT THE ENTRANCE TO 4805 ARAPAHO RD.
APPROX ±400 FEET EAST OF ADDISON RD. ELEV. 630.66
2. "B" ON SOUTH RIM OF MANHOLE LOCATED ON THE SOUTH SIDE OF ARAPAHO RD
AT THE NORTHEAST CORNER OF SITE, APPROX. 16.5' EAST OF THE WEST END OF
SIDEWALK. ELEV. 632.25

RECORD DRAWING
THIS DRAWING HAS BEEN REVISED TO REFLECT
CONSTRUCTION RECORDS MAINTAINED AND
PROVIDED BY THE CONTRACTOR FOR THIS PROJECT.
CONTRACTOR: SOUTHERN MECHANICAL PLUMBING, INC.
400 S. ASTON
SUNNYVALE, TEXAS 75182
DATE REVISED: 29 MARCH 1996



REVISED: MARCH 29, 1996
REVISED: JULY 13, 1995

PACHECO KOCH 9401 LBJ Freeway, Suite 300
Consulting Engineers, Inc. Dallas, Texas 75243
Civil Engineering • Land Surveying (214) 235-3031

STORM DRAIN PROFILE
SUMMERFIELD SUITES HOTEL
ARAPAHO ROAD
QUORUM CENTER ADDITION
CITY OF ADDISON, TEXAS

DESIGN	DRAWN	DATE	SCALE	NOTES	FILE	NO.
JAK	BB	4/27/95	1"=40'H 1"=5'V			

PK NO: 1467-95.01

DWG NO: 1467-04

STORM DRAIN PROFILE	
SHEET TITLE	
SHEET NUMBER	
C4	
4 OF 7 SHEETS	