

PRINTS ISSUED		
DATE	PURPOSE	NO.

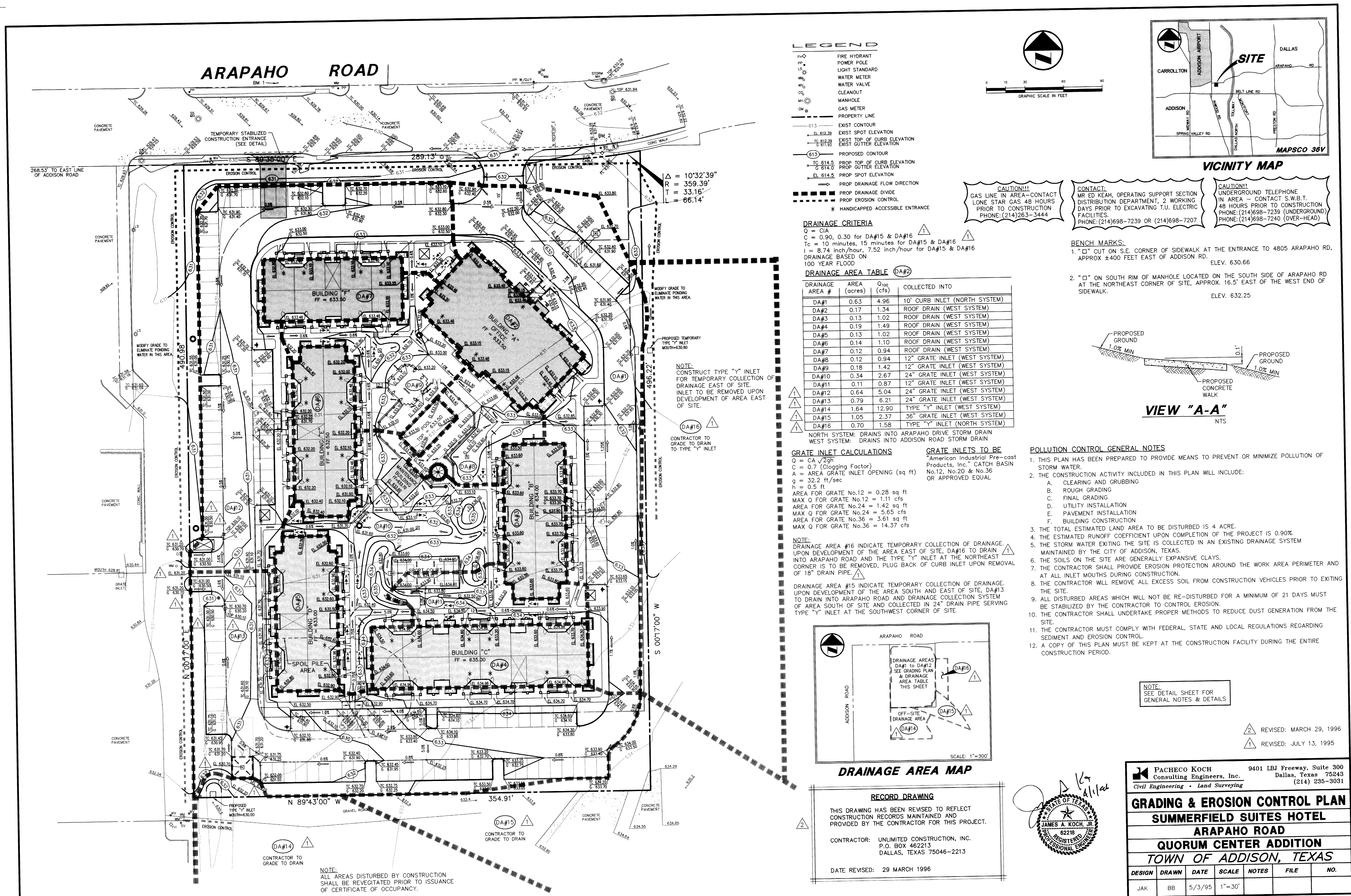
REVISIONS		
DATE	ITEM	NO.

LAW/KINGDON, INC.
 ARCHITECTS & ENGINEERS
 345 RIVERVIEW, WICHITA, KS 67203
 Phone (316) 688-6238 Fax (316) 688-0293
 Copyright © 1994

DRAWN	CHECKED
BB	JAK
RELATED DRAWINGS	
SHELL	
DETAILS	
STRUCTURE	
MECHANICAL	
ELECTRICAL	
OTHER	
SEQUENCE NUMBER	

SUMMERFIELD SUITES HOTEL
 ADDISON, TEXAS
 PROJECT NUMBER 94780

GRADING PLAN	
SHEET TITLE	SHEET NUMBER
C-2	
2	7

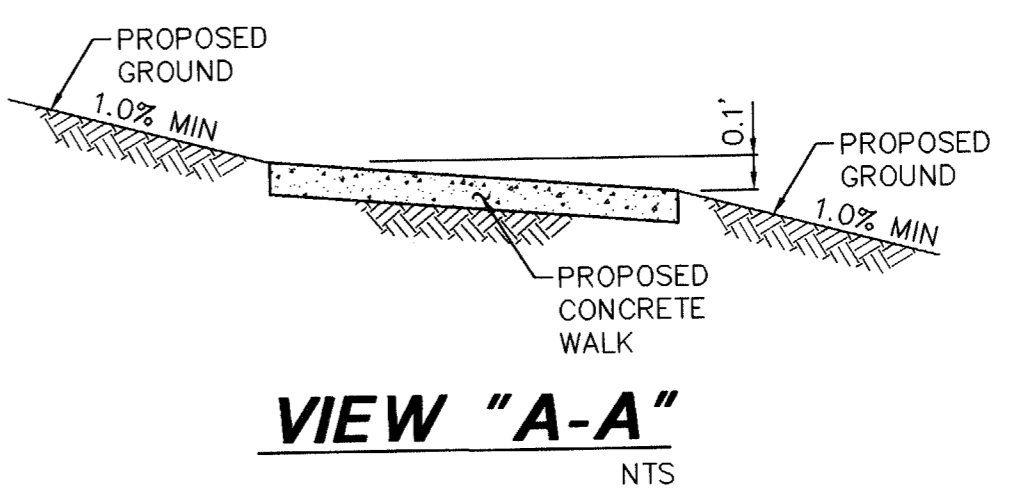


CAUTION!!!
 GAS LINE IN AREA-CONTACT LONE STAR GAS 48 HOURS PRIOR TO CONSTRUCTION. PHONE: (214) 263-3444

CONTACT:
 MR ED KEAH, OPERATING SUPPORT SECTION DISTRIBUTION DEPARTMENT, 2 WORKING DAYS PRIOR TO EXCAVATING T.U. ELECTRIC FACILITIES. PHONE: (214) 698-7239 OR (214) 698-7207

CAUTION!!!
 UNDERGROUND TELEPHONE IN AREA - CONTACT S.W.B.T. 48 HOURS PRIOR TO CONSTRUCTION. PHONE: (214) 698-7239 (UNDERGROUND) PHONE: (214) 698-7240 (OVER-HEAD)

BENCH MARKS:
 1. "G" CUT ON S.E. CORNER OF SIDEWALK AT THE ENTRANCE TO 4805 ARAPAHO RD. APPROX ±400 FEET EAST OF ADDISON RD. ELEV. 630.66
 2. "D" ON SOUTH RIM OF MANHOLE LOCATED ON THE SOUTH SIDE OF ARAPAHO RD AT THE NORTHEAST CORNER OF SITE, APPROX. 16.5' EAST OF THE WEST END OF SIDEWALK. ELEV. 632.25



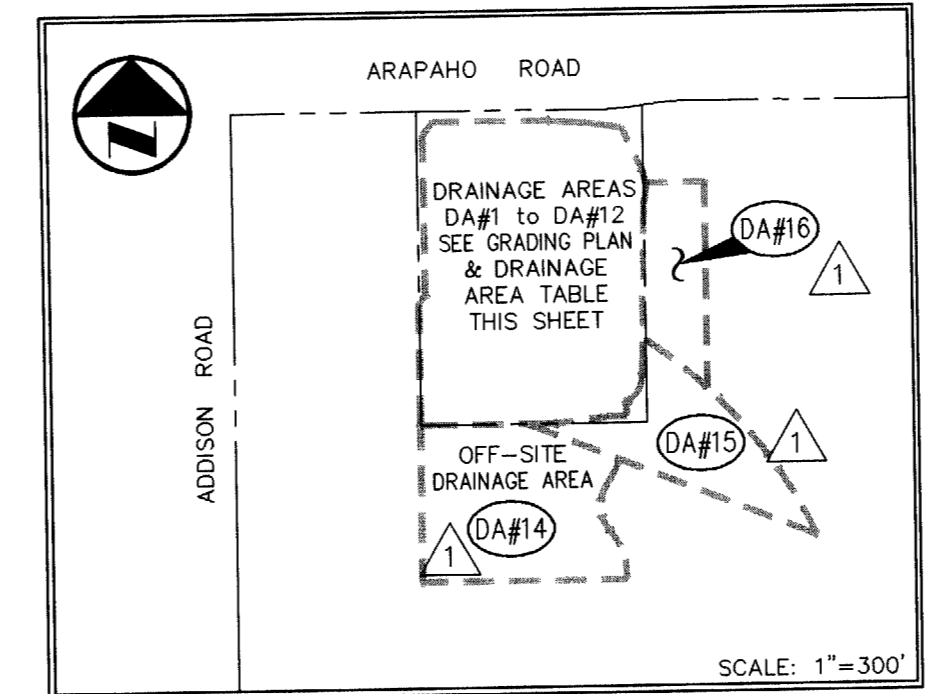
GRATE INLET CALCULATIONS
 $Q = CA \sqrt{2gh}$
 $C = 0.7$ (Clogging Factor)
 $A =$ AREA GRATE INLET OPENING (sq ft)
 $g = 32.2$ ft/sec
 $h = 0.5$ ft

GRATE INLETS TO BE
 "American Industrial Pre-cast Products, Inc." CATCH BASIN No.12, No.20 & No.36 OR APPROVED EQUAL

AREA FOR GRATE No.12 = 0.28 sq ft
 MAX Q FOR GRATE No.12 = 1.11 cfs
 AREA FOR GRATE No.24 = 1.42 sq ft
 MAX Q FOR GRATE No.24 = 5.65 cfs
 AREA FOR GRATE No.36 = 3.61 sq ft
 MAX Q FOR GRATE No.36 = 14.37 cfs

NOTE:
 DRAINAGE AREA #16 INDICATE TEMPORARY COLLECTION OF DRAINAGE UPON DEVELOPMENT OF THE AREA EAST OF SITE. DA#16 TO DRAIN INTO ARAPAHO ROAD AND THE TYPE "Y" INLET AT THE NORTHEAST CORNER IS TO BE REMOVED, PLUG BACK OF CURB INLET UPON REMOVAL OF 18" DRAIN PIPE.

DRAINAGE AREA #15 INDICATE TEMPORARY COLLECTION OF DRAINAGE UPON DEVELOPMENT OF THE AREA SOUTH AND EAST OF SITE. DA#13 TO DRAIN INTO ARAPAHO ROAD AND DRAINAGE COLLECTION SYSTEM OF AREA SOUTH OF SITE AND COLLECTED IN 24" DRAIN PIPE SERVING TYPE "Y" INLET AT THE SOUTHWEST CORNER OF SITE.

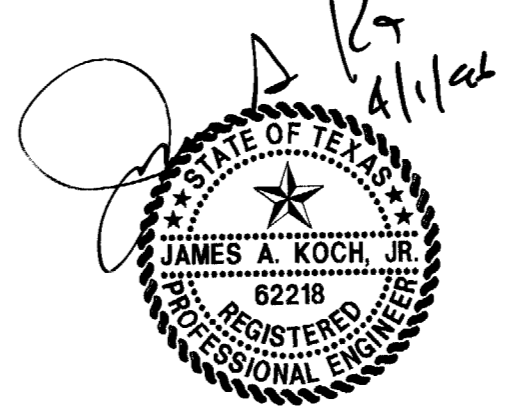


RECORD DRAWING

THIS DRAWING HAS BEEN REVISED TO REFLECT CONSTRUCTION RECORDS MAINTAINED AND PROVIDED BY THE CONTRACTOR FOR THIS PROJECT.

CONTRACTOR: UNLIMITED CONSTRUCTION, INC. P.O. BOX 462213 DALLAS, TEXAS 75046-2213

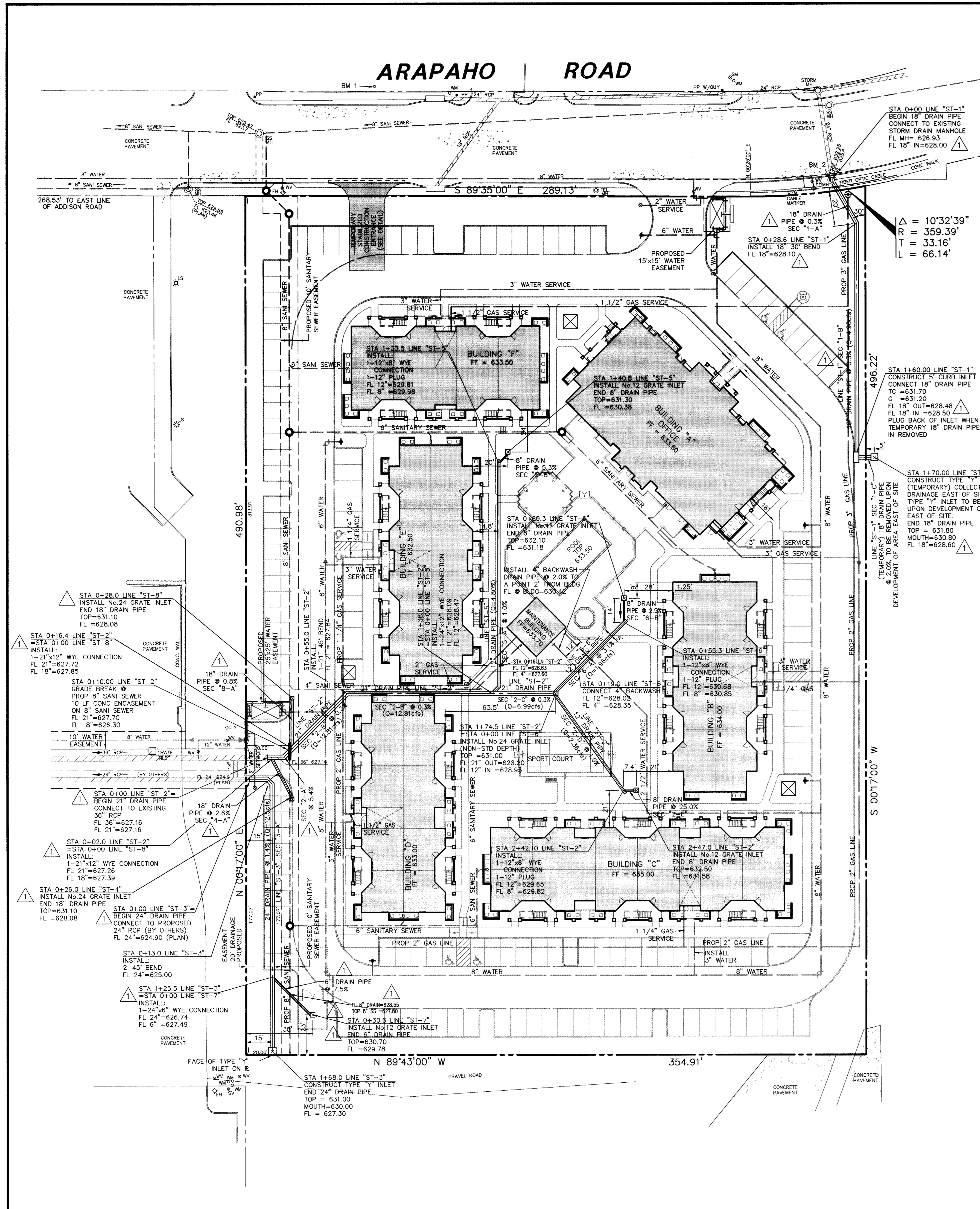
DATE REVISED: 29 MARCH 1996



PACHECO KOCH Consulting Engineers, Inc.
 Civil Engineering • Land Surveying
 9401 LBJ Freeway, Suite 300 Dallas, Texas 75243
 (214) 235-3031

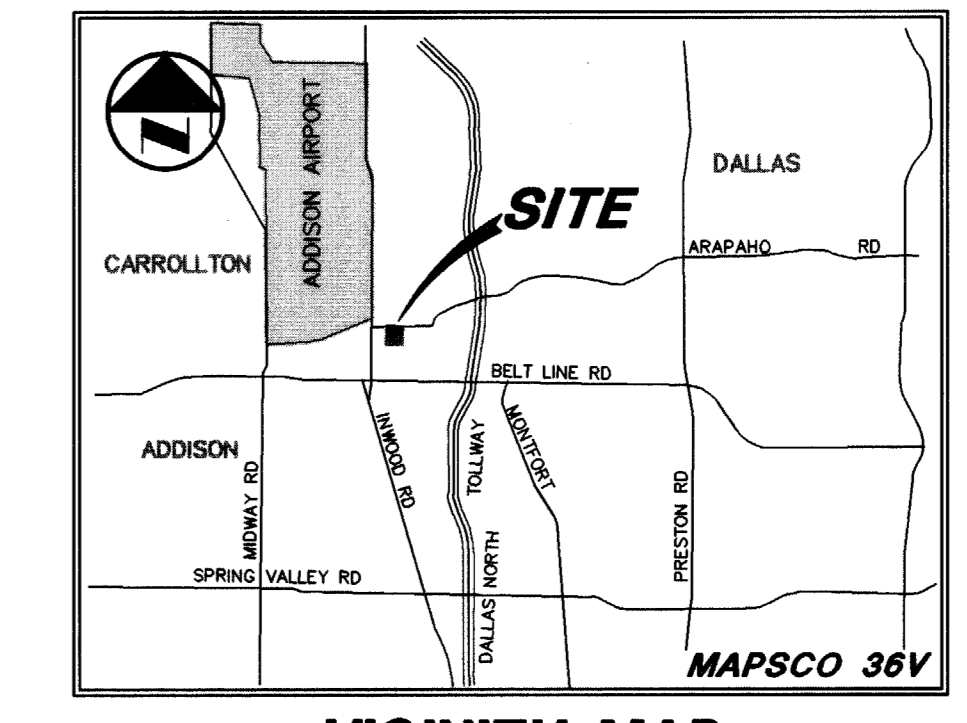
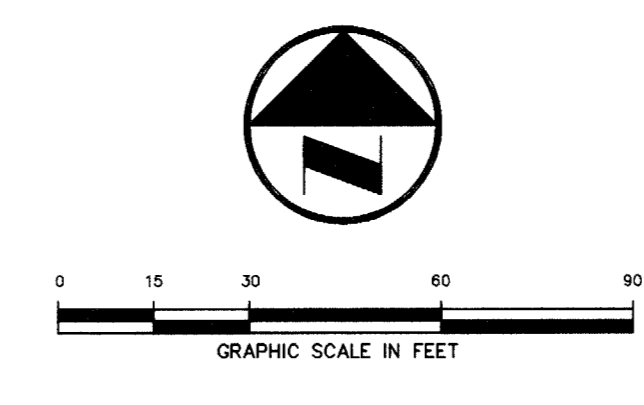
GRADING & EROSION CONTROL PLAN
SUMMERFIELD SUITES HOTEL
ARAPAHO ROAD
QUORUM CENTER ADDITION
TOWN OF ADDISON, TEXAS

DESIGN	DRAWN	DATE	SCALE	NOTES	FILE	NO.
JAK	BB	5/3/95	1"=30'			



LEGEND

FW	FIRE HYDRANT
PP	POWER POLE
LS	LIGHT STANDARD
WM	WATER METER
WV	WATER VALVE
CL	CLEANOUT
MH	MANHOLE
GM	GAS METER
---	PROPERTY LINE



CAUTION!!
GAS LINE IN AREA—CONTACT LONE STAR GAS 48 HOURS PRIOR TO CONSTRUCTION. PHONE: (214)263-3444

CONTACT:
MR ED KEAH, OPERATING SUPPORT SECTION DISTRIBUTION DEPARTMENT, 2 WORKING DAYS PRIOR TO EXCAVATING T.U. ELECTRIC FACILITIES. PHONE: (214)698-7239 OR (214)698-7207

CAUTION!!
UNDERGROUND TELEPHONE IN AREA - CONTACT S.W.B.T. 48 HOURS PRIOR TO CONSTRUCTION. PHONE: (214)698-7239 (UNDERGROUND) PHONE: (214)698-7240 (OVER-HEAD)

BENCH MARKS:

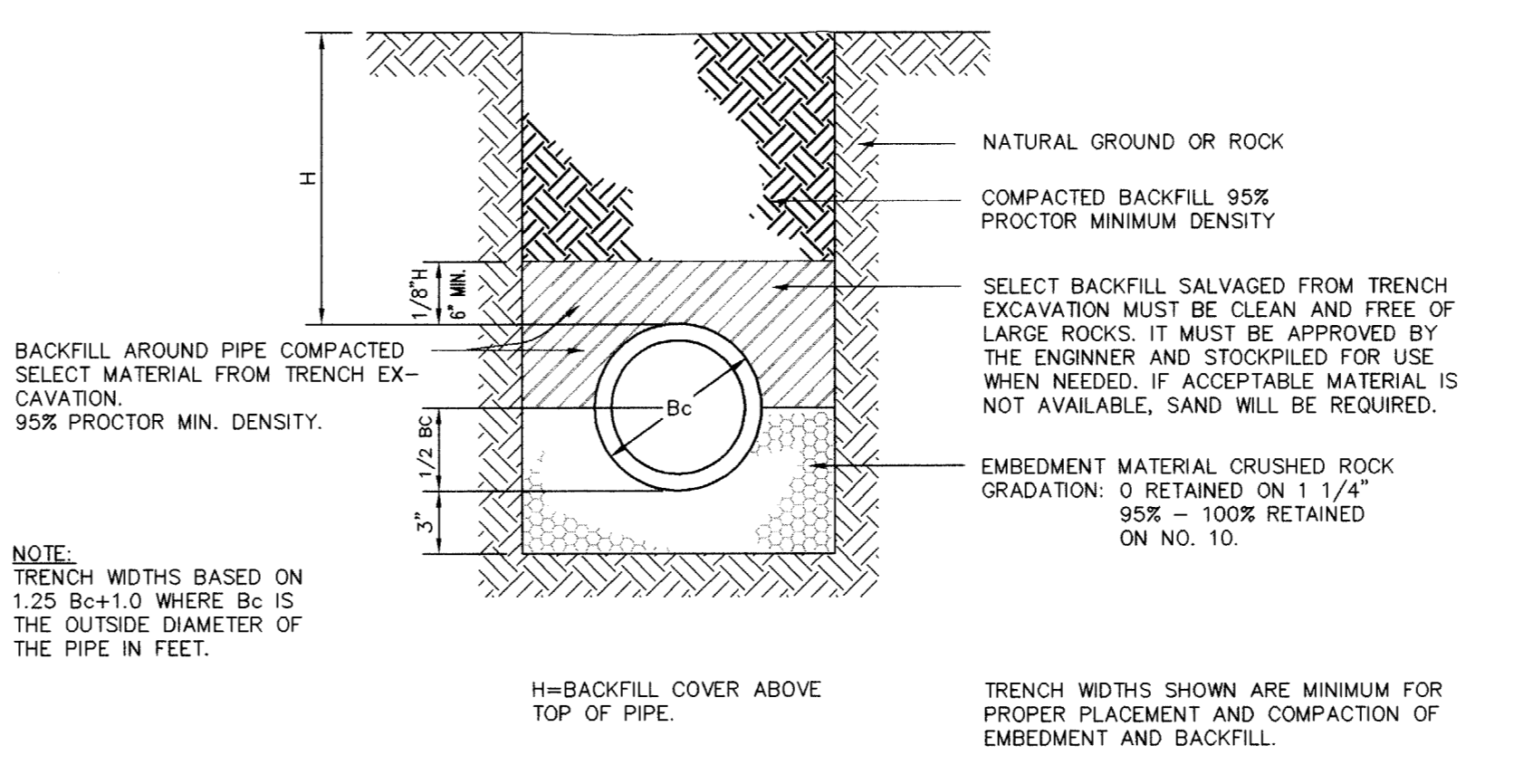
- "C" CUT ON S.E. CORNER OF SIDEWALK AT THE ENTRANCE TO 4805 ARAPAHO RD, APPROX ±400 FEET EAST OF ADDISON RD. ELEV. 630.66
- "Q" ON SOUTH RIM OF MANHOLE LOCATED ON THE SOUTH SIDE OF ARAPAHO RD AT THE NORTHEAST CORNER OF SITE, APPROX. 16.5' EAST OF THE WEST END OF SIDEWALK. ELEV. 632.25

NOTE:
CONNECT BUILDING "A" ROOF DRAIN TO 12" DRAIN PIPE LINE "ST-6", SECTION "6-A"
CONNECT BUILDING "B" ROOF DRAIN TO 12" DRAIN PIPE LINE "ST-6", SECTION "6-A"
CONNECT BUILDING "C" ROOF DRAIN TO 12" DRAIN PIPE LINE "ST-2", SECTION "2-D"
CONNECT BUILDING "D" ROOF DRAIN TO 24" DRAIN PIPE LINE "ST-2", SECTION "2-B"
CONNECT BUILDING "E" ROOF DRAIN TO 12" DRAIN PIPE LINE "ST-5", SECTION "5-A"
CONNECT BUILDING "F" ROOF DRAIN TO 12" DRAIN PIPE LINE "ST-5", SECTION "5-A"

SECTION	PIPE DIA	SLOPE	Q ₁₀₀	V ₁₀₀	V ² /2g	C	S _f	n	* Q ₁₀₀
SEC "1-A"	18"	0.3%	4.96 cfs	2.81 fps	0.1226	5.75 cfs	0.0022	0.013	6.54 cfs
SEC "1-B"	18"	0.3%	4.96 cfs	2.81 fps	0.1226	5.75 cfs	0.0022	0.013	6.54 cfs
SEC "1-C"	18"	2.0%	0.00 cfs	0.00 fps	0.0000	14.86 cfs	0.0000	0.013	1.58 cfs
SEC "2-A"	21"	5.4%	24.06 cfs	10.00 fps	1.5528	36.82 cfs	0.0231	0.013	
SEC "2-B"	21"	0.3%	12.81 cfs	5.33 fps	0.4411	8.68 cfs	0.0065	0.013	
SEC "2-C"	21"	0.3%	6.99 cfs	2.91 fps	0.1315	8.68 cfs	0.0019	0.013	
SEC "2-D"	12"	1.0%	2.36 cfs	3.00 fps	0.1398	3.56 cfs	0.0044	0.013	
SEC "2-E"	8"	25.0%	0.87 cfs	2.47 fps	0.0947	6.12 cfs	0.0050	0.013	
SEC "3-A"	24"	1.4%	12.90 cfs	3.98 fps	0.2460	26.77 cfs	0.0031	0.013	
SEC "4-A"	18"	2.6%	6.21 cfs	3.51 fps	0.5988	16.94 cfs	0.0035	0.013	13.62 cfs
SEC "5-A"	12"	1.0%	4.80 cfs	6.11 fps	0.5797	3.56 cfs	0.1982	0.013	
SEC "5-B"	8"	5.3%	1.42 cfs	4.03 fps	0.2522	2.82 cfs	0.0134	0.013	
SEC "6-A"	12"	5.0%	1.96 cfs	2.50 fps	0.0970	7.97 cfs	0.0030	0.013	
SEC "6-B"	8"	2.5%	0.94 cfs	2.67 fps	0.1107	1.94 cfs	0.0059	0.013	
SEC "8-A"	18"	0.8%	5.04 cfs	2.85 fps	0.1261	9.40 cfs	0.0023	0.013	

* INDICATES: TEMPORARY RUNOFF CALCULATION (INCLUDES DA#15 OR DA#16)

DRAINAGE BASED ON 100 YEAR FLOOD, T_c = 10 minutes, I = 8.74 inch/hr, C = 0.90



REINFORCED CONCRETE CLASS III PIPE INSTALLATION (EMBEDMENT DETAIL)

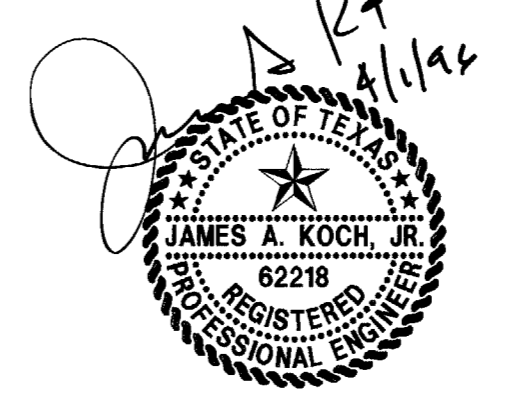
RECORD DRAWING

THIS DRAWING HAS BEEN REVISED TO REFLECT CONSTRUCTION RECORDS MAINTAINED AND PROVIDED BY THE CONTRACTOR FOR THIS PROJECT.

CONTRACTOR: SOUTHERN MECHANICAL PLUMBING, INC.
400 S. ASTON
SUNNYVALE, TEXAS 75182

DATE REVISED: 29 MARCH 1996

REVISED: MARCH 29, 1996
REVISED: JULY 13, 1995



PACHECO KOCH Consulting Engineers, Inc. 9401 LBJ Freeway, Suite 300 Dallas, Texas 75243 (214) 235-3031
Civil Engineering • Land Surveying

DRAINAGE PLAN
SUMMERFIELD SUITES HOTEL
ARAPAHO ROAD
QUORUM CENTER ADDITION
TOWN OF ADDISON, TEXAS

DESIGN	DRAWN	DATE	SCALE	NOTES	FILE	NO.
JAK	BB	5-3-95	1"=30'			

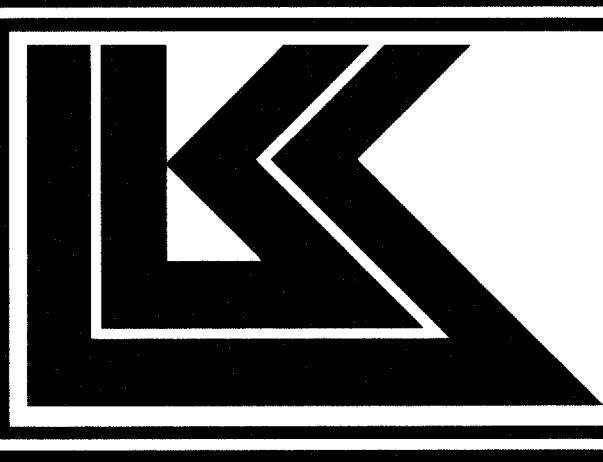
PRINTS ISSUED

DATE	PURPOSE	NO.

FOR CONSTRUCTION:

REVISIONS

DATE	ITEM	NO.



LAW/KINGDON, INC.
ARCHITECTS & ENGINEERS
345 RIVERVIEW WICHITA, KS 67203
Phone (316) 269-9626 Fax (316) 269-9605
Copyright © 1994

DRAWN	CHECKED
BB	JAK

RELATED DRAWINGS

SHELL	DETAILS	STRUCTURE	MECHANICAL	ELECTRICAL	OTHER

SEQUENCE NUMBER	OF	SHEETS

SUMMERFIELD SUITES HOTEL

ADDISON, TEXAS

PROJECT NUMBER 94780

DRAINAGE PLAN

SHEET TITLE

SHEET NUMBER

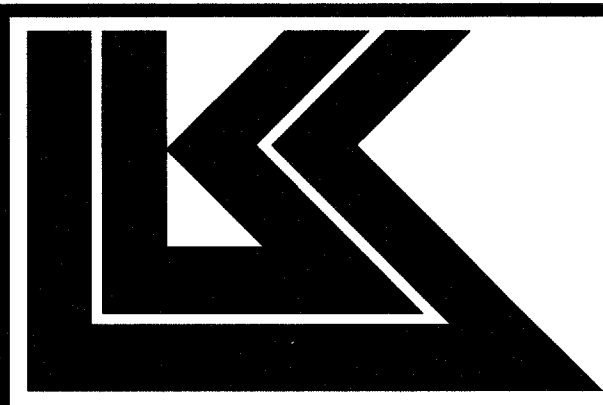
C-3

3 OF 7 SHEETS

PK NO: 1467-95/01 DWG NO: 1467-03C

PRINTS ISSUED		
DATE	PURPOSE	NO.

FOR CONSTRUCTION		
REVISIONS		
DATE	ITEM	NO.



LAW/KINGDON, INC.
ARCHITECTS & ENGINEERS
345 RIVERVIEW WICHITA, KS 67209
Phone (316) 848-1630 Fax (316) 848-3805
Copyright © 1994

DRAWN	CHECKED
BB	JAK

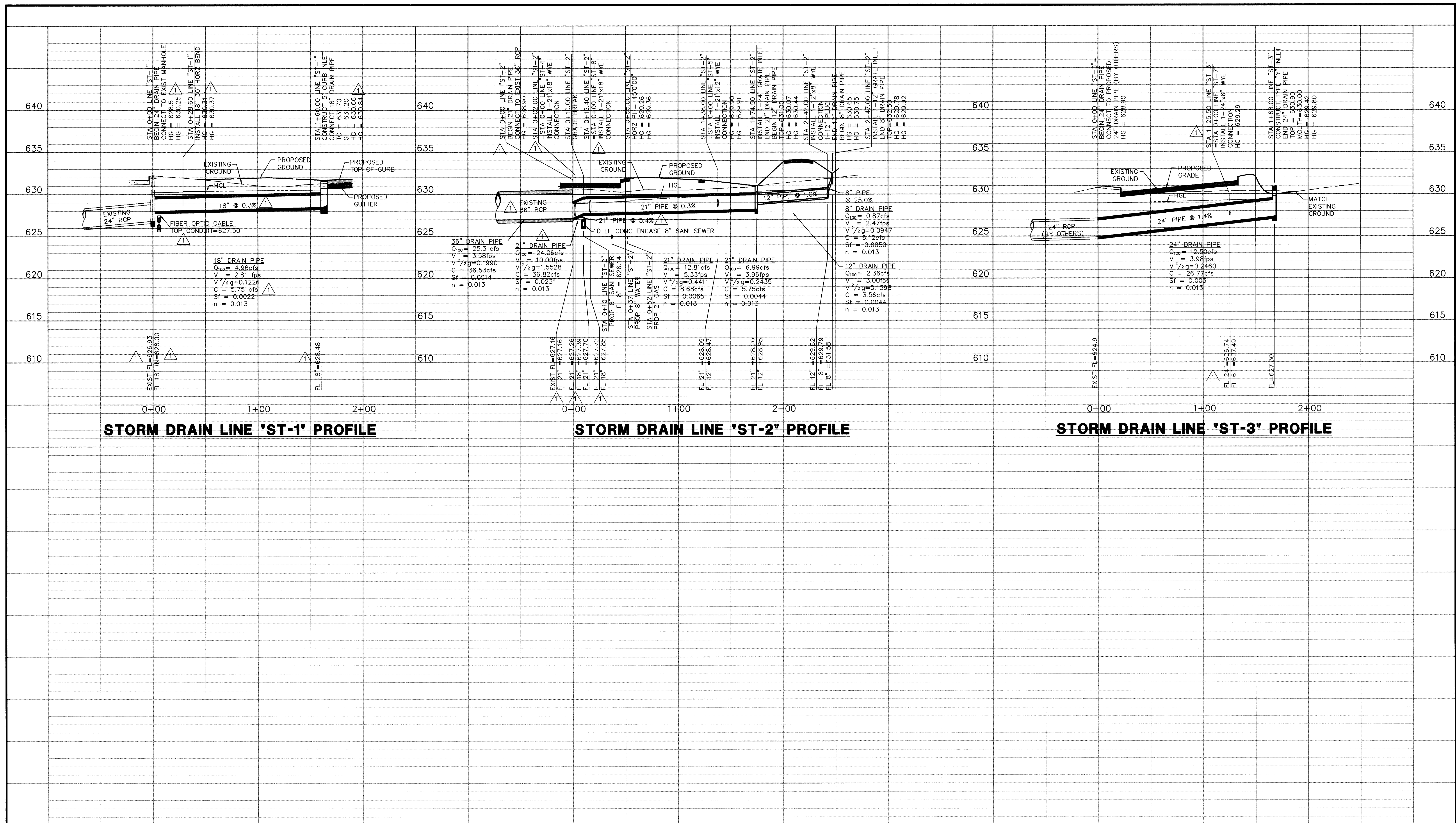
RELATED DRAWINGS

SHELL	
DETAILS	
STRUCTURE	
MECHANICAL	
ELECTRICAL	
OTHER	

SEQUENCE NUMBER _____ OF _____ SHEETS

SUMMERFIELD SUITES HOTEL
ADDISON, TEXAS
PROJECT NUMBER 94780

STORM DRAIN PROFILE
SHEET TITLE
SHEET NUMBER
C4
4 OF 7 SHEETS



STORM DRAIN LINE 'ST-1' PROFILE

STORM DRAIN LINE 'ST-2' PROFILE

STORM DRAIN LINE 'ST-3' PROFILE

- BENCH MARKS:**
- "□" CUT ON S.E. CORNER OF SIDEWALK AT THE ENTRANCE TO 4805 ARAPAHO RD, APPROX ±400 FEET EAST OF ADDISON RD. ELEV. 630.66
 - "□" ON SOUTH RIM OF MANHOLE LOCATED ON THE SOUTH SIDE OF ARAPAHO RD AT THE NORTHEAST CORNER OF SITE, APPROX. 16.5' EAST OF THE WEST END OF SIDEWALK. ELEV. 632.25

RECORD DRAWING

THIS DRAWING HAS BEEN REVISED TO REFLECT CONSTRUCTION RECORDS MAINTAINED AND PROVIDED BY THE CONTRACTOR FOR THIS PROJECT.

CONTRACTOR: SOUTHERN MECHANICAL PLUMBING, INC.
400 S. ASTON
SUNNYVALE, TEXAS 75182

DATE REVISED: 29 MARCH 1996

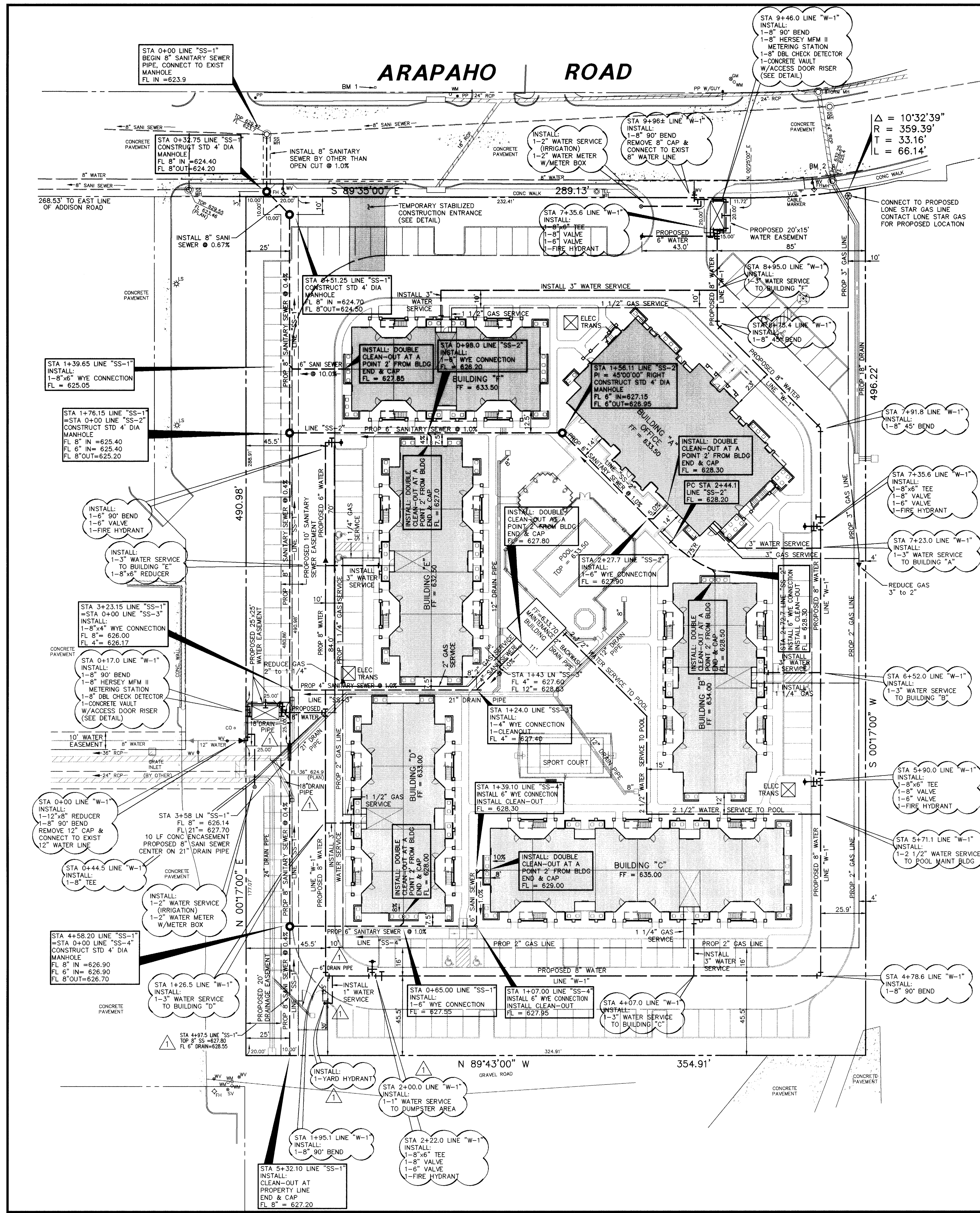
REVISED: MARCH 29, 1996
REVISED: JULY 13, 1995

PACHECO KOCH Consulting Engineers, Inc.
Civil Engineering • Land Surveying
9401 LBJ Freeway, Suite 300
Dallas, Texas 75243
(214) 235-3031

STORM DRAIN PROFILE
SUMMERFIELD SUITES HOTEL
ARAPAHO ROAD
QUORUM CENTER ADDITION
CITY OF ADDISON, TEXAS

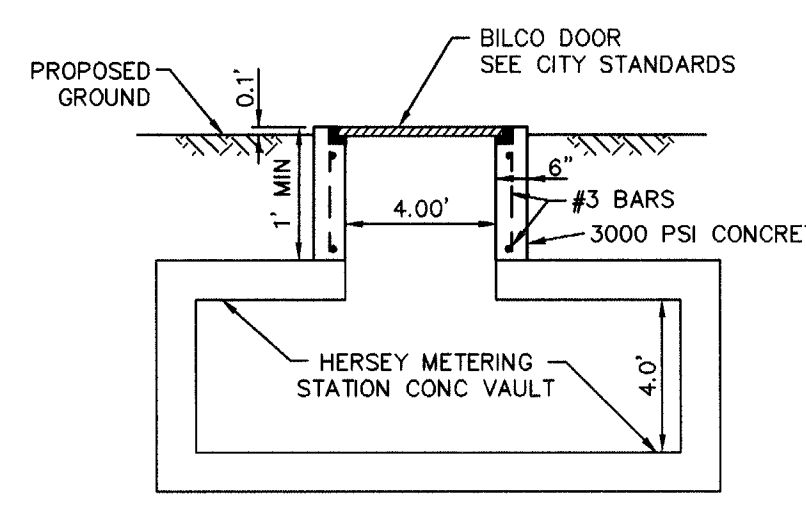
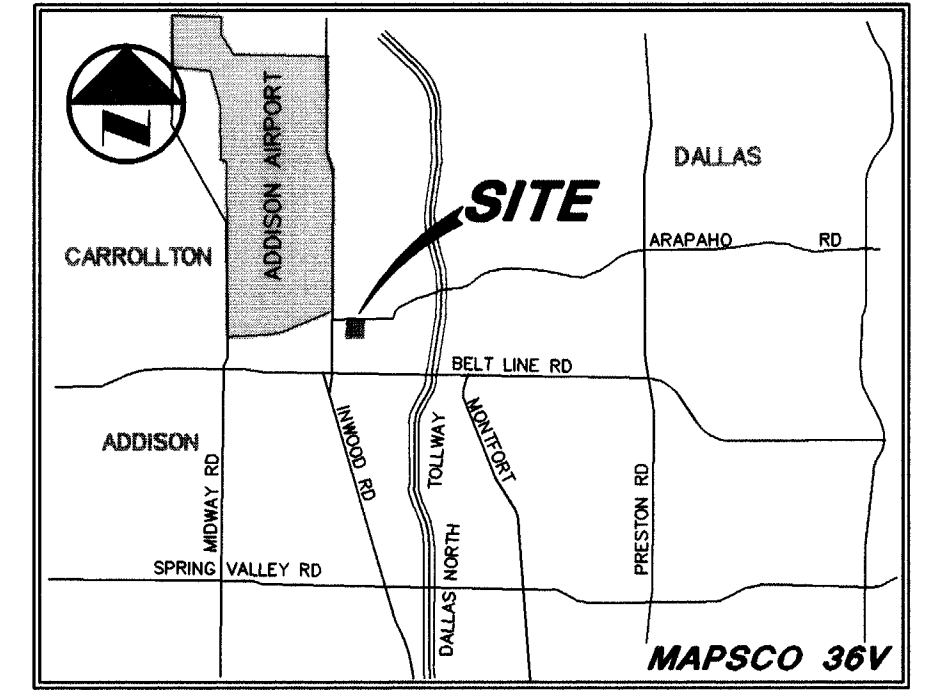
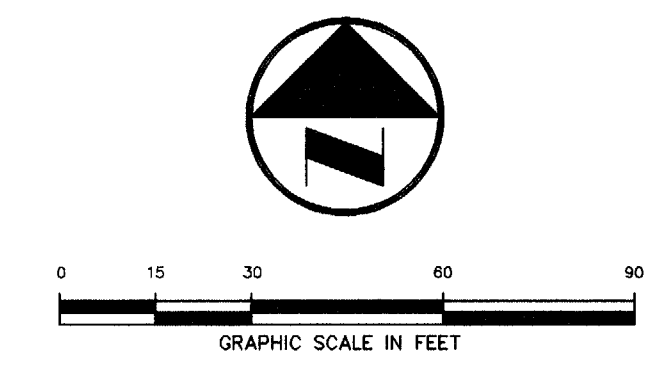
DESIGN	DRAWN	DATE	SCALE	NOTES	FILE	NO.
JAK	BB	4/27/95	1"=40'H 1"=5'V			

PK NO: 1467-95.01 DWG NO: 1467-04



LEGEND

FD	FIRE HYDRANT
PP	POWER POLE
LS	LIGHT STANDARD
WM	WATER METER
WV	WATER VALVE
CO	CLEANOUT
MH	MANHOLE
GM	GAS METER
---	PROPERTY LINE



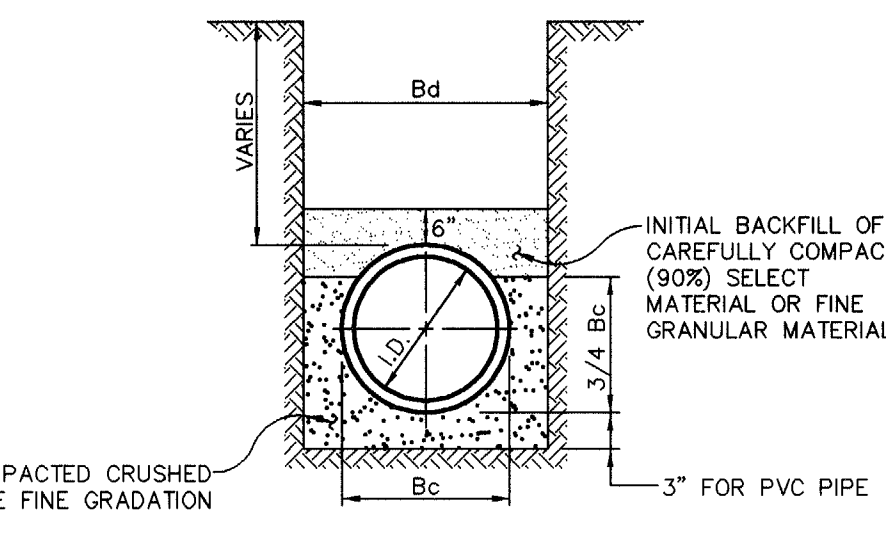
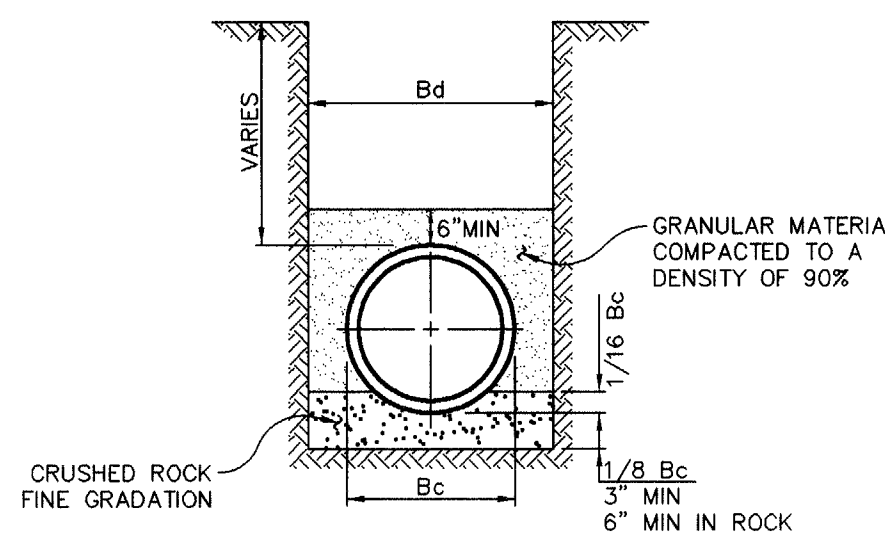
CAUTION!!!
 GAS LINE IN AREA - CONTACT LONE STAR GAS 48 HOURS PRIOR TO CONSTRUCTION PHONE: (214)263-3444

CONTACT:
 MR. ED KEAH, OPERATING SUPPORT SECTION DISTRIBUTION DEPARTMENT, 2 WORKING DAYS PRIOR TO EXCAVATING T.U. ELECTRIC FACILITIES. PHONE: (214)698-7239 OR (214)698-7207

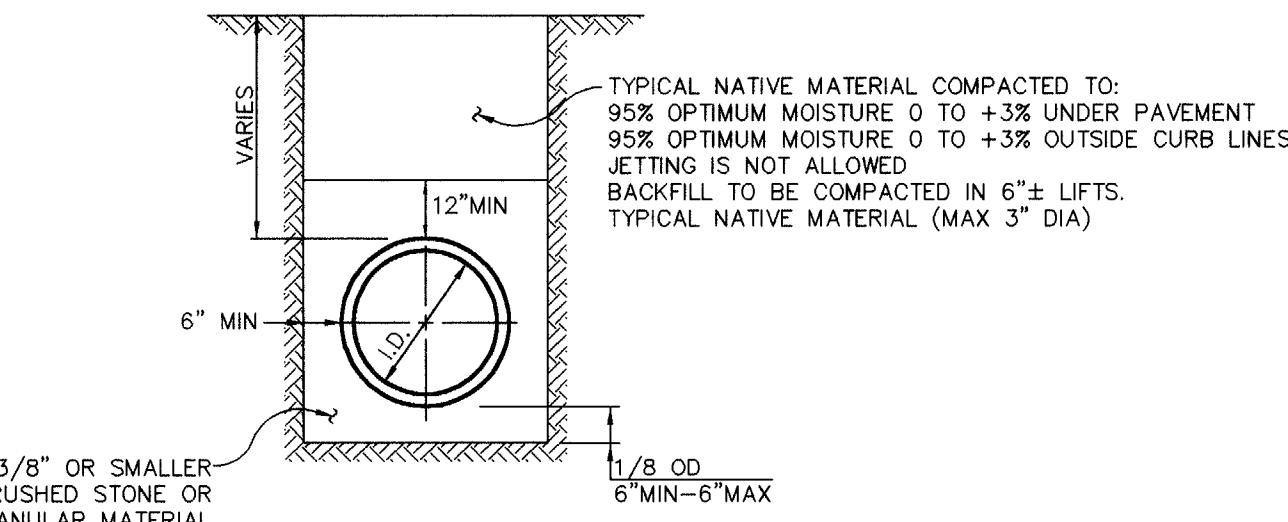
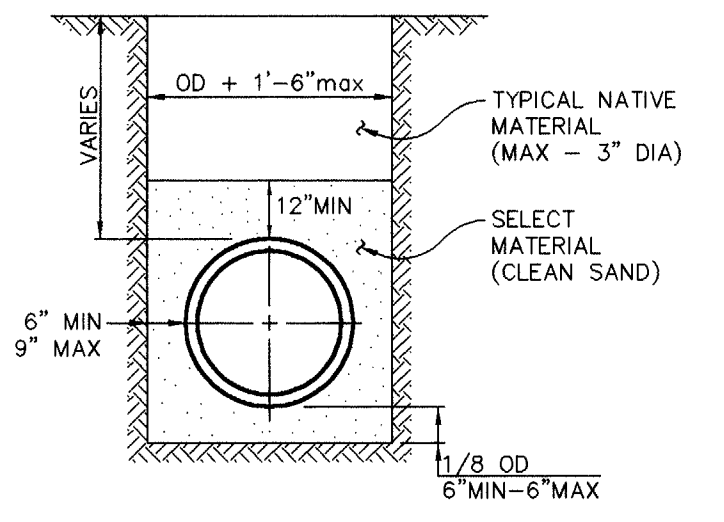
CAUTION!!!
 UNDERGROUND TELEPHONE IN AREA - CONTACT S.W.B.T. 48 HOURS PRIOR TO CONSTRUCTION PHONE: (214)698-7239 (UNDERGROUND) PHONE: (214)698-7240 (OVER-HEAD)

BENCH MARKS:

- 1" "O" CUT ON S.E. CORNER OF SIDEWALK AT THE ENTRANCE TO 4805 ARAPAHO RD. APPROX ±400 FEET EAST OF ADDISON RD. ELEV. 630.66
- 2" "O" ON SOUTH RIM OF MANHOLE LOCATED ON THE SOUTH SIDE OF ARAPAHO RD AT THE NORTHEAST CORNER OF SITE, APPROX. 16.5' EAST OF THE WEST END OF SIDEWALK. ELEV. 632.25



NOTE:
 PRIOR TO INSTALLATION OF WATER SERVICE, THE BACKFLOW PREVENTION DEVICE SHALL BE TESTED AND CERTIFIED TO FUNCTION BY A LICENSED PROFESSIONAL.



RECORD DRAWING

THIS DRAWING HAS BEEN REVISIONED TO REFLECT CONSTRUCTION RECORDS MAINTAINED AND PROVIDED BY THE CONTRACTOR FOR THIS PROJECT.

CONTRACTOR: SOUTHERN MECHANICAL PLUMBING, INC. 400 S. ASTON SUNNYVALE, TEXAS 75182

DATE REVISED: 29 MARCH 1996



REVISED: MARCH 29, 1996
 REVISED: JULY 13, 1995

PACHECO KOCH 9401 LBJ Freeway, Suite 300
 Consulting Engineers, Inc. Dallas, Texas 75243
 Civil Engineering • Land Surveying (214) 235-3031

UTILITY PLAN
SUMMERFIELD SUITES HOTEL
ARAPAHO ROAD
QUORUM CENTER ADDITION
TOWN OF ADDISON, TEXAS

DESIGN	DRAWN	DATE	SCALE	NOTES	FILE	NO.
JAK	BB	5/3/95	1"=30'			

PRINTS ISSUED

DATE	PURPOSE	NO.

FOR CONSTRUCTION:

REVISIONS

DATE	ITEM	NO.

LAW/KINGDON, INC.
 ARCHITECTS & ENGINEERS
 345 RIVERVIEW WICHITA, KS 67203
 Phone (316) 268-0830 Fax (316) 268-0295
 Copyright © 1994

BROWN	CHECKED
BB	JAK
RELATED DRAWINGS	
SHELL	
DETAILS	
STRUCTURE	
MECHANICAL	
ELECTRICAL	
OTHER	
SEQUENCE NUMBER	
OF _____ SHEETS	

SUMMERFIELD SUITES HOTEL

ADDISON, TEXAS

PROJECT NUMBER 94780

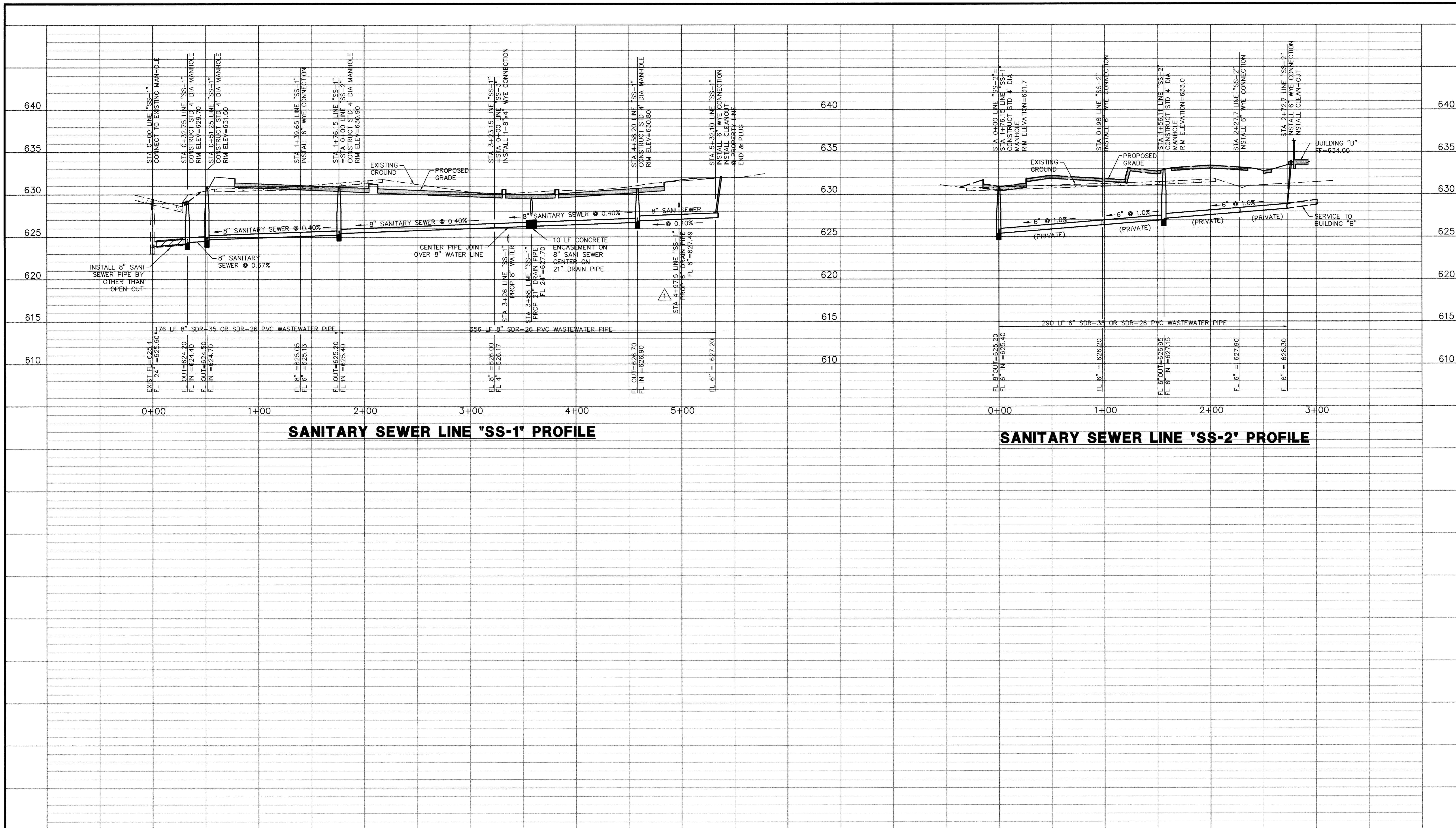
UTILITY PLAN

SHEET TITLE

SHEET NUMBER

C-5

5 of 7 SHEETS



SANITARY SEWER LINE 'SS-1' PROFILE

SANITARY SEWER LINE 'SS-2' PROFILE

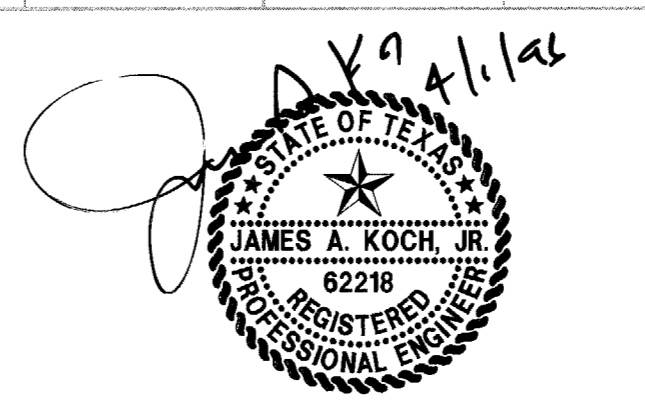
- BENCH MARKS:**
- "□" CUT ON S.E. CORNER OF SIDEWALK AT THE ENTRANCE TO 4805 ARAPAHO RD. APPROX ±400 FEET EAST OF ADDISON RD. ELEV. 630.66
 - "□" ON SOUTH RIM OF MANHOLE LOCATED ON THE SOUTH SIDE OF ARAPAHO RD AT THE NORTHEAST CORNER OF SITE, APPROX. 16.5' EAST OF THE WEST END OF SIDEWALK. ELEV. 632.25

RECORD DRAWING

THIS DRAWING HAS BEEN REVISED TO REFLECT CONSTRUCTION RECORDS MAINTAINED AND PROVIDED BY THE CONTRACTOR FOR THIS PROJECT.

CONTRACTOR: SOUTHERN MECHANICAL PLUMBING, INC.
400 S. ASTON
SUNNYVALE, TEXAS 75182

DATE REVISED: 29 MARCH 1996



- REVISED: MARCH 29, 1996
- REVISED: JULY 13, 1995

PACHECO KOCH Consulting Engineers, Inc.
Civil Engineering • Land Surveying

9401 LBJ Freeway, Suite 300
Dallas, Texas 75243
(214) 235-3031

SANITARY SEWER PROFILE
SUMMERFIELD SUITES HOTEL
ARAPAHO ROAD
QUORUM CENTER ADDITION
CITY OF ADDISON, TEXAS

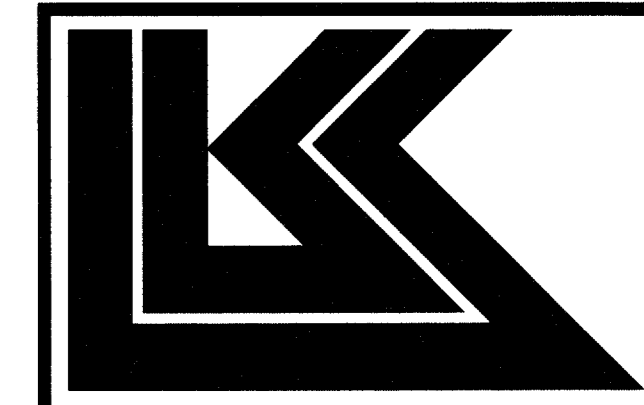
DESIGN	DRAWN	DATE	SCALE	NOTES	FILE	NO.
JAK	BB	5/3/95	1"=40'H 1"=5'V			

PK NO: 1467-95.01 DWG NO: 1467-05

PRINTS ISSUED		
DATE	PURPOSE	NO.

FOR CONSTRUCTION:

REVISIONS		
DATE	ITEM	NO.



LAW/KINGDON, INC.
ARCHITECTS & ENGINEERS
345 RIVERVIEW WICHITA, KS 67209
Phone (316) 898-1630 Fax (316) 898-9200
Copyright © 1994

DRAWN	CHECKED
BB	JAK

RELATED DRAWINGS

SHELL	
DETAILS	
STRUCTURE	
MECHANICAL	
ELECTRICAL	
OTHER	

SEQUENCE NUMBER _____ OF _____ SHEETS

SUMMERFIELD SUITES HOTEL

ADDISON, TEXAS

PROJECT NUMBER 94780

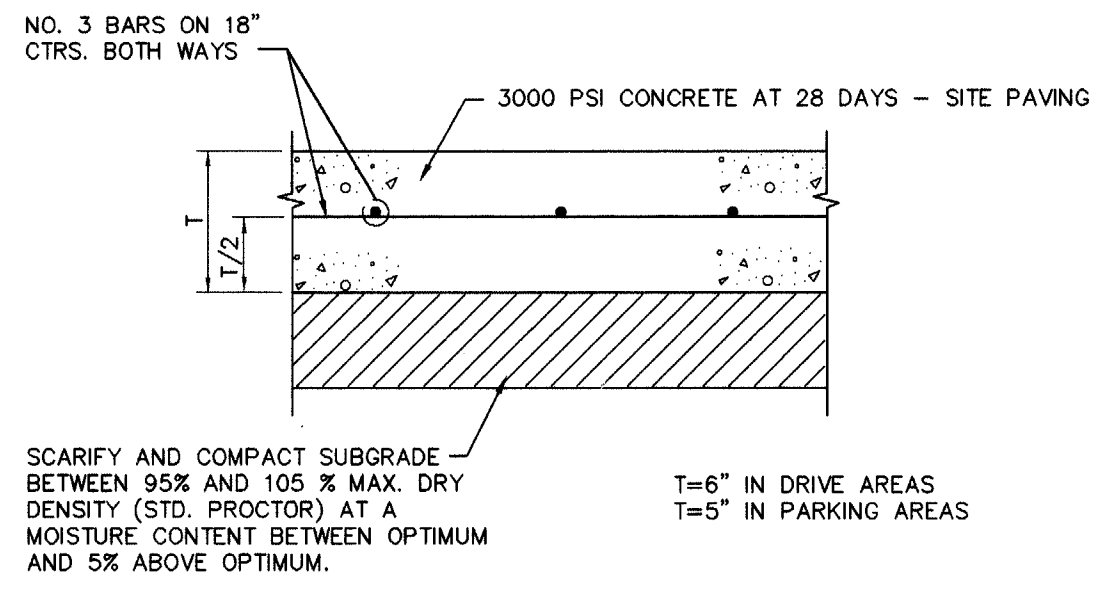
SANITARY SEWER PROFILE

SHEET TITLE

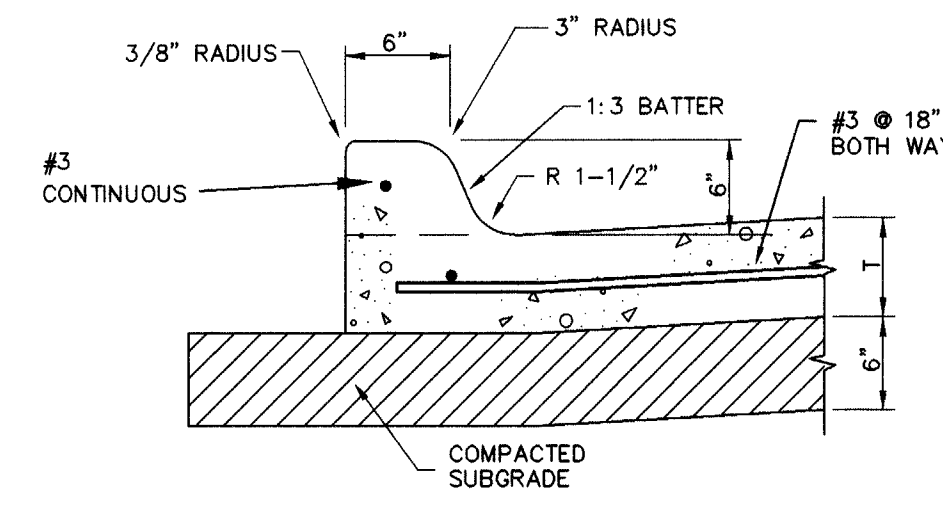
SHEET NUMBER

C-6

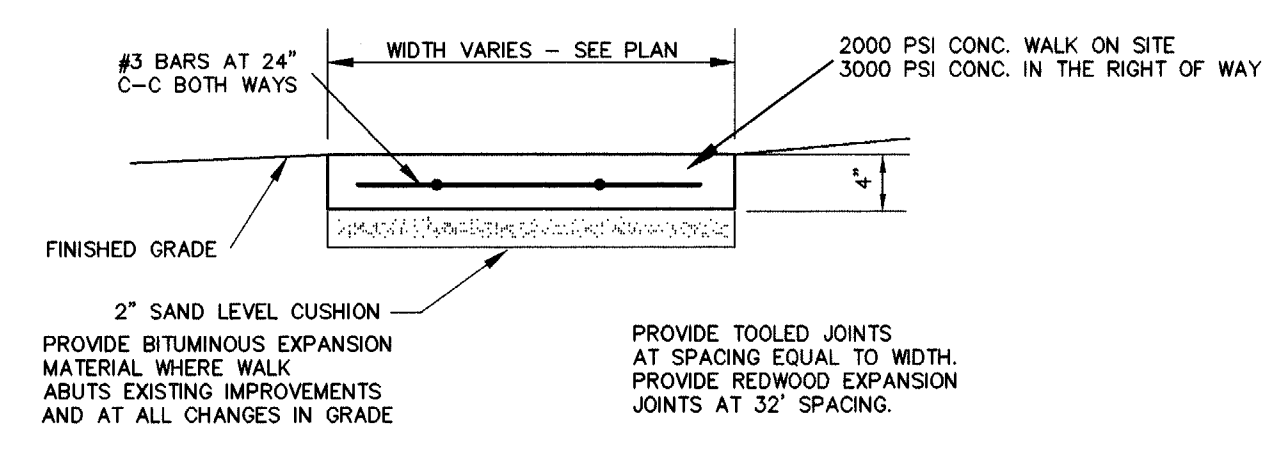
6 OF 7 SHEETS



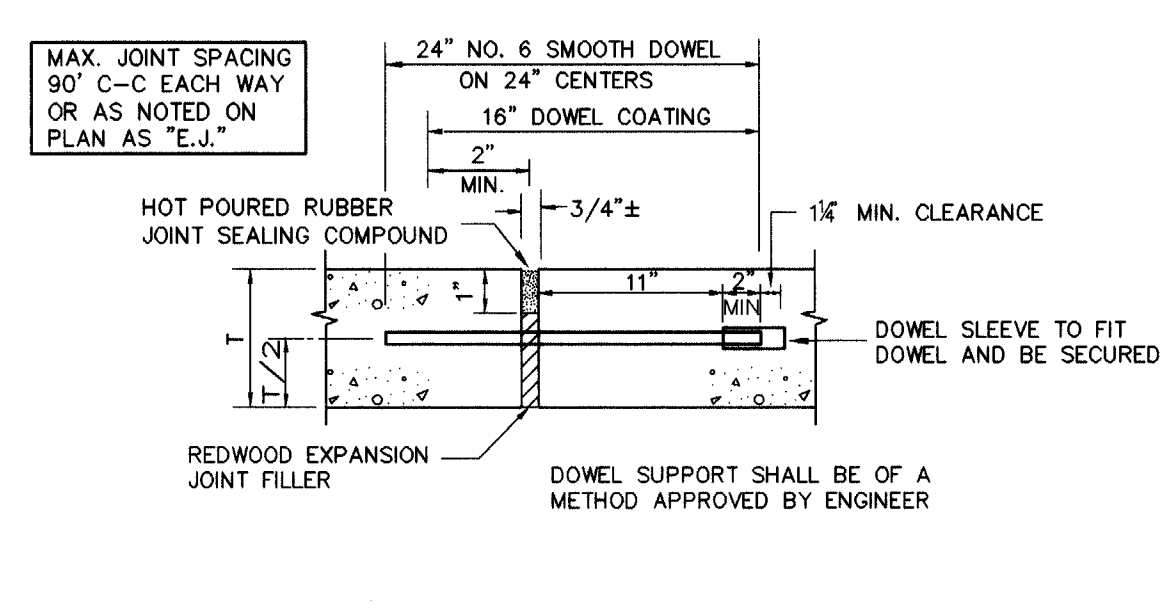
1 PAVEMENT SECTION
NOT TO SCALE



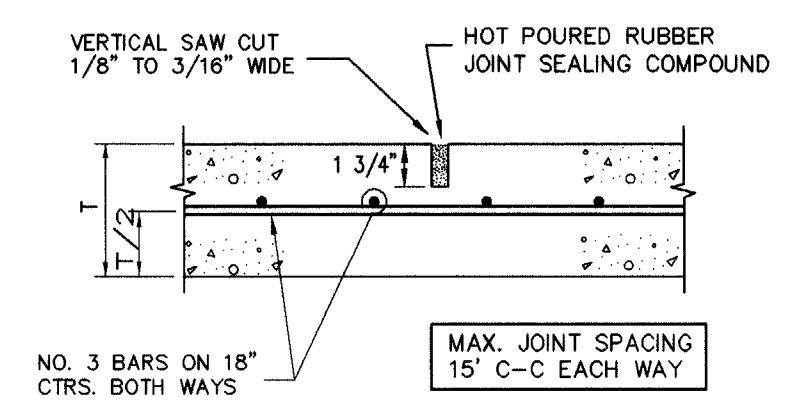
2 INTEGRAL CURB
NOT TO SCALE



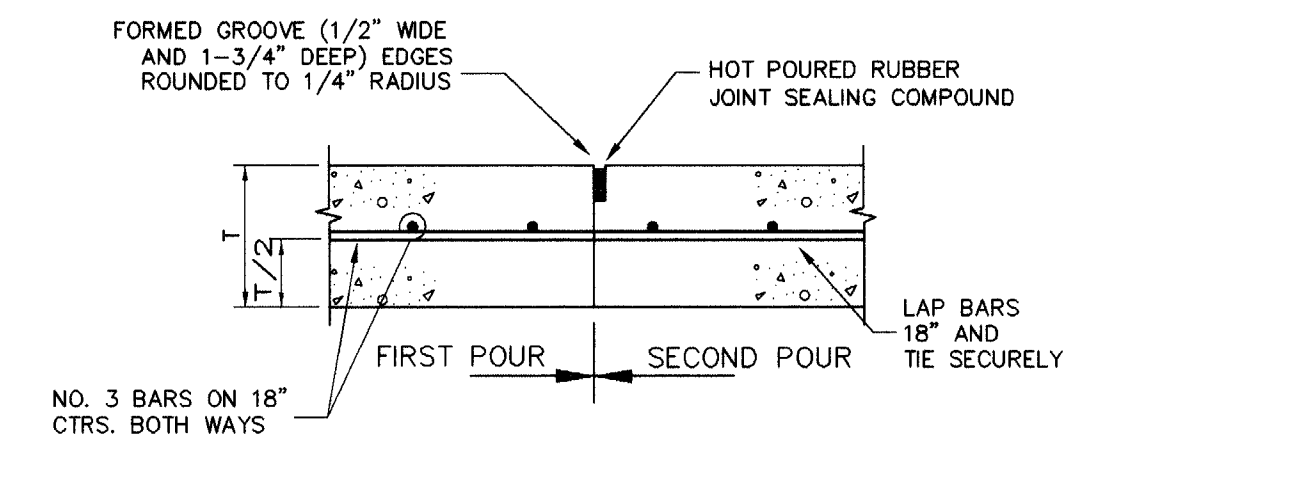
3 CONCRETE WALK
NOT TO SCALE



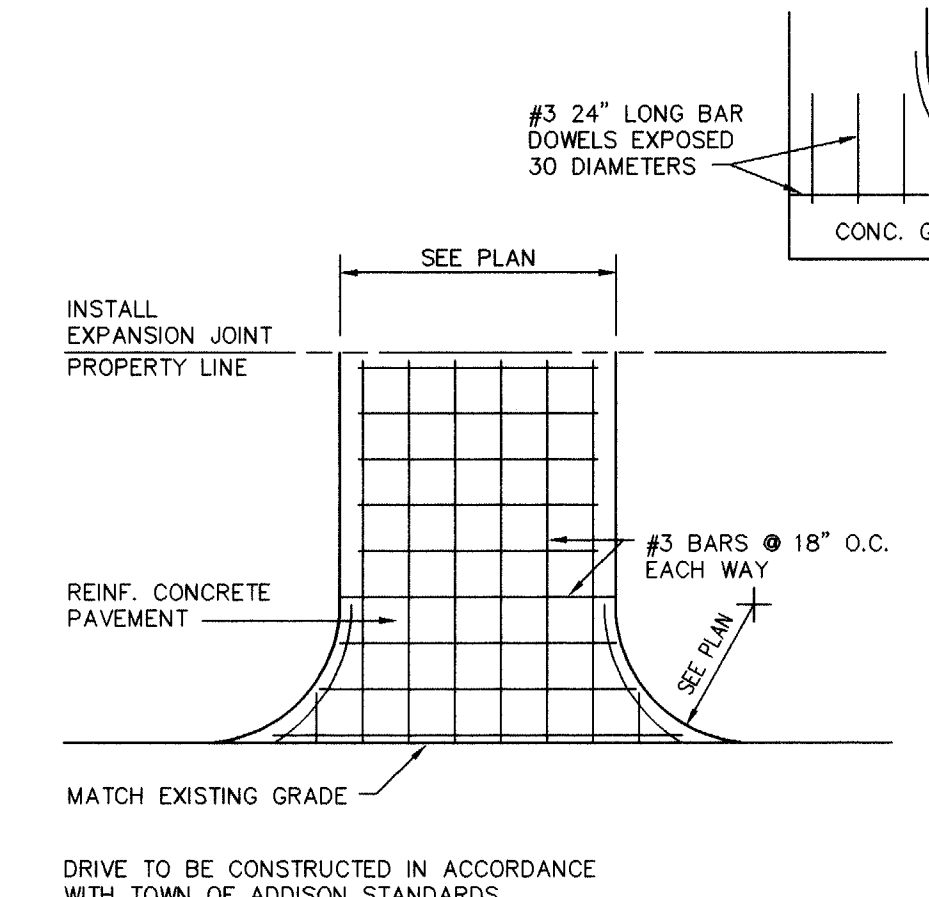
4 EXPANSION JOINT
NOT TO SCALE



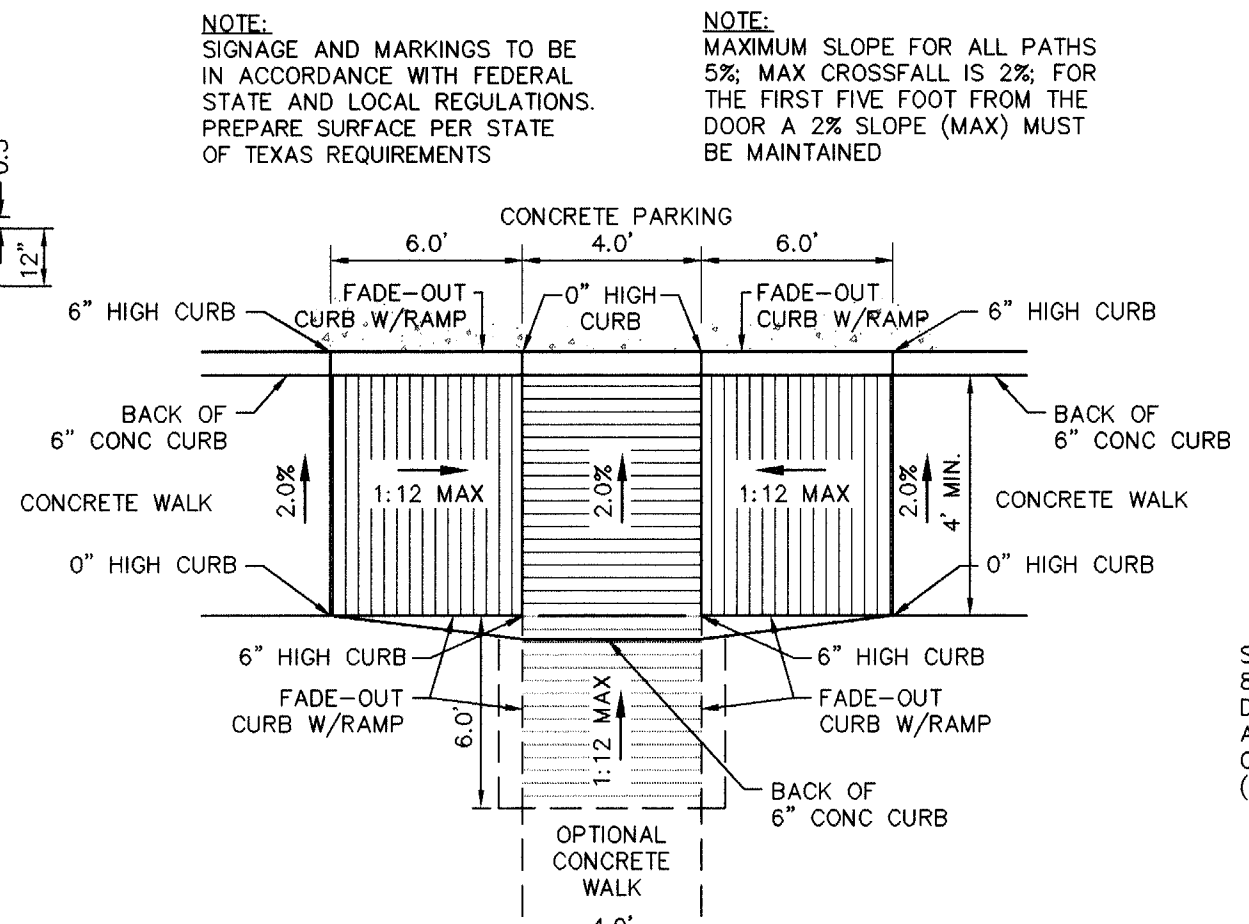
5 SAWED DUMMY JOINT
NOT TO SCALE



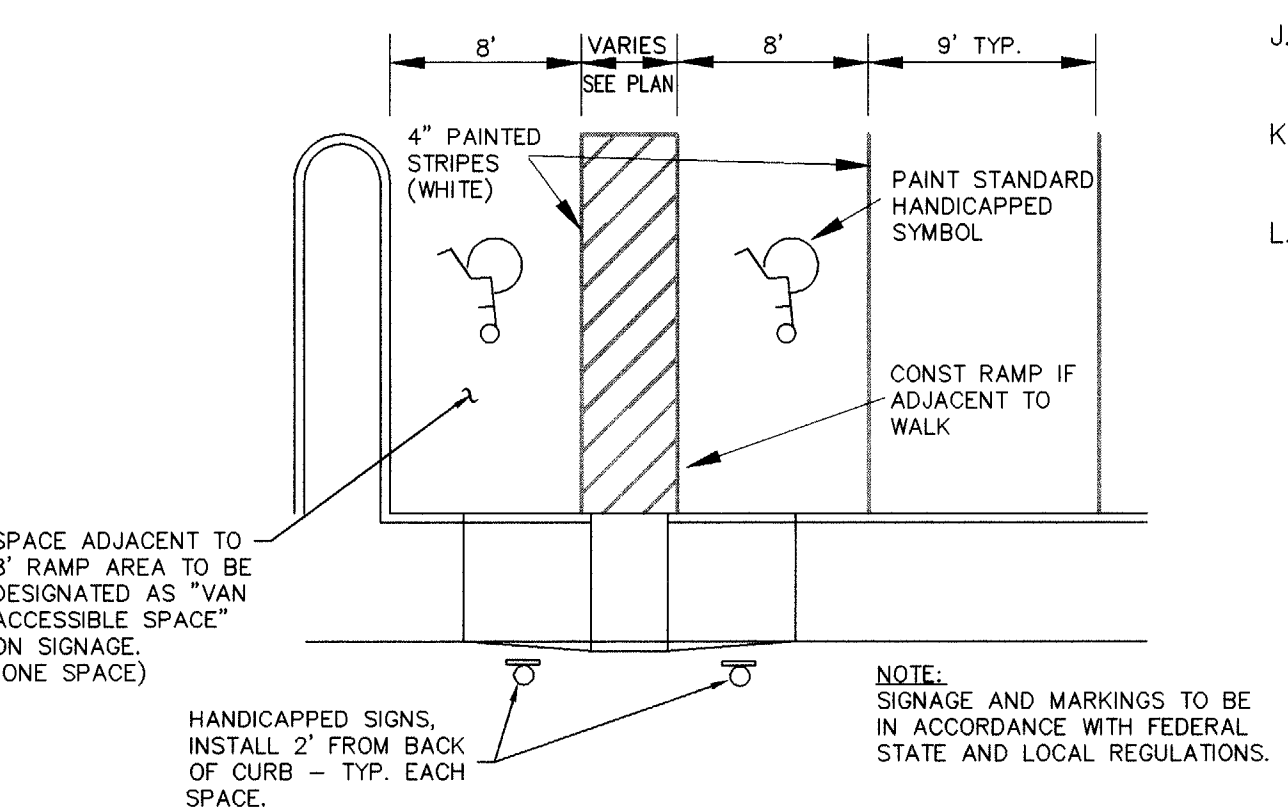
6 CONSTRUCTION JOINT
NOT TO SCALE



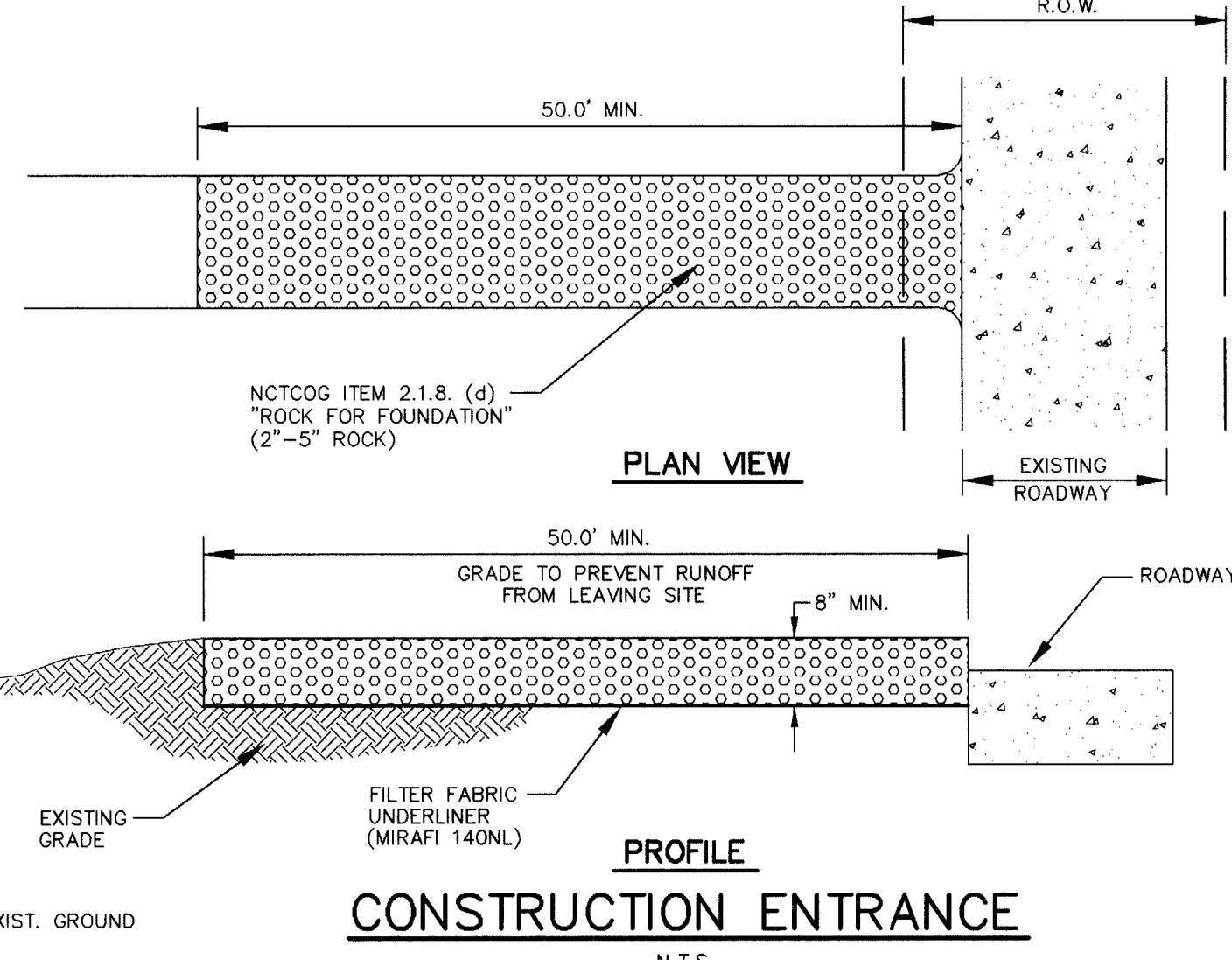
7 DRIVEWAY APPROACH
NOT TO SCALE



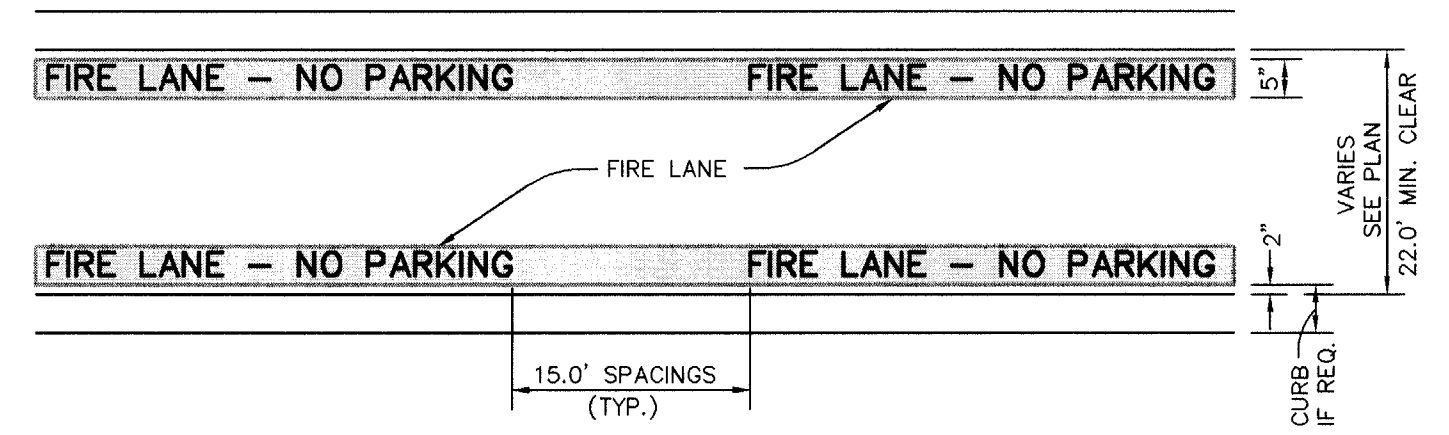
8 ACCESS RAMP
NOT TO SCALE



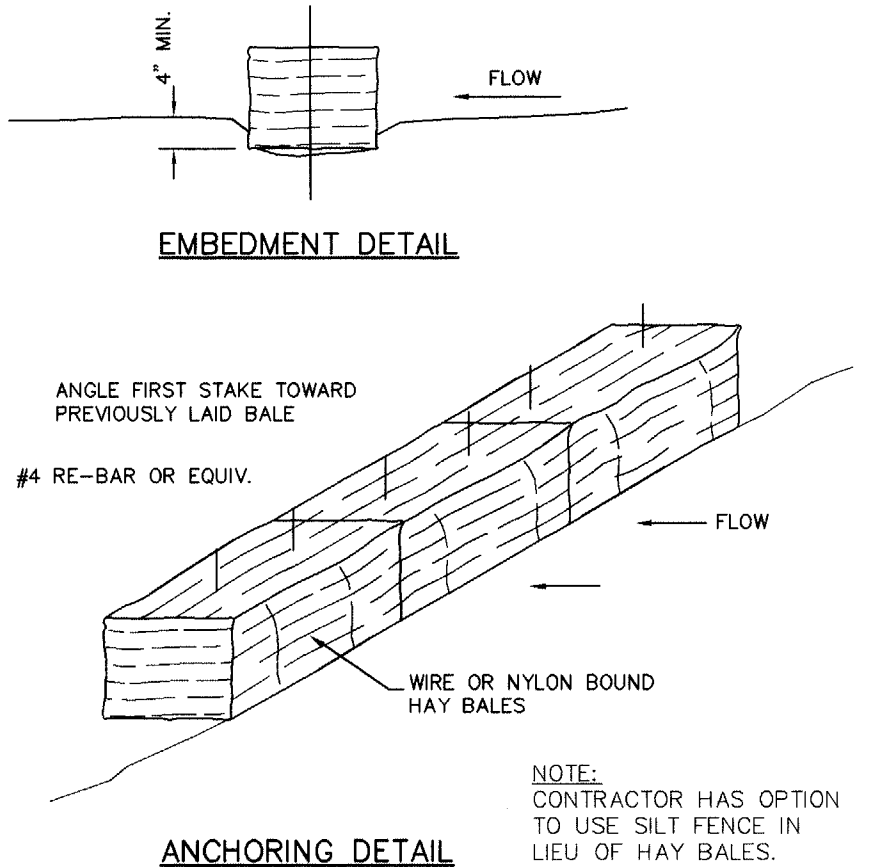
HANDICAPPED PARKING LAYOUT



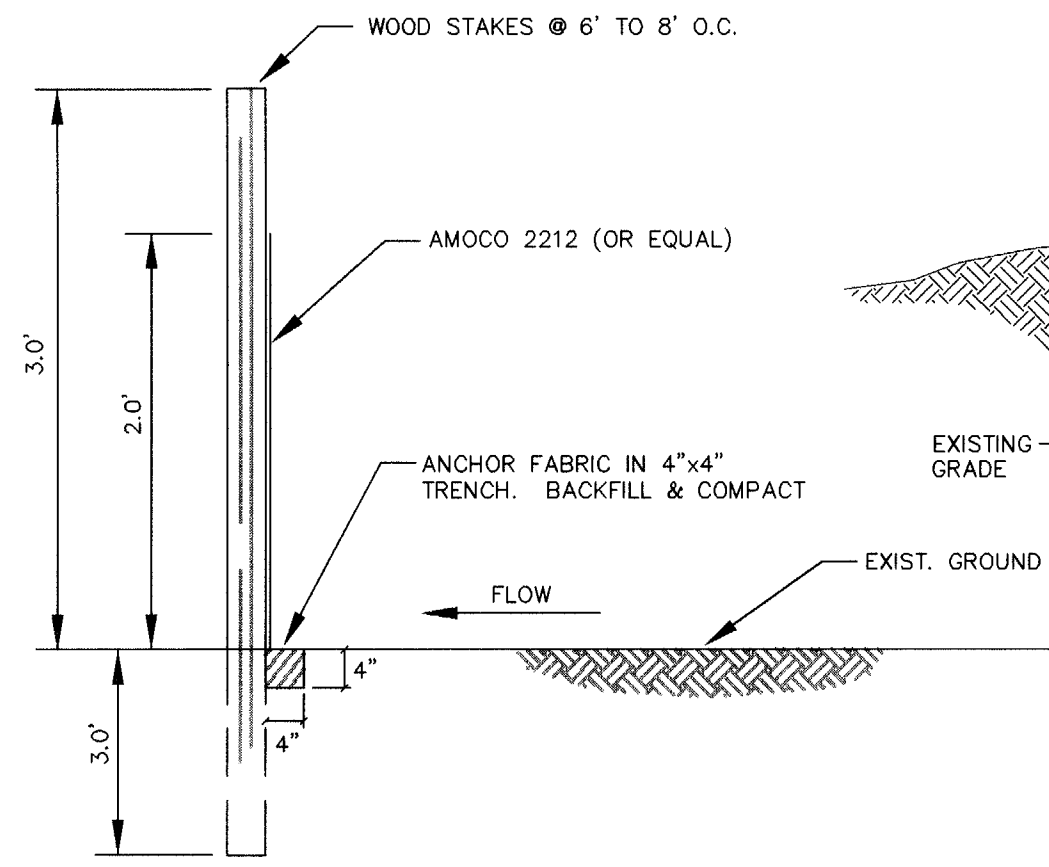
CONSTRUCTION ENTRANCE
N.T.S.



9 FIRE LANE STRIPING DETAIL
NOT TO SCALE



11 EROSION CONTROL DETAIL
NOT TO SCALE



LOW FLOW SILT FENCE DETAIL:
TYPICAL TEMPORARY FILTER FABRIC WITHOUT WIRE FABRIC
N.T.S.

- GENERAL NOTES:**
- Prior to final acceptance by the Town of Addison.
 - A Texas Registered Professional Engineer shall certify that the project was constructed in accordance with the plans and specifications approved by the Town of Addison.
 - The owner shall provide 1 reproducible set of as-builts (sealed and certified by a Texas Registered Professional Engineer) and 2 blue line sets.
 - A five foot sidewalk shall be installed along Arapaho Road. See attached detail.
 - A one year 10% maintenance bond is required for the internal subdivision infrastructure.
 - Contractor shall demonstrate that the water and sanitary sewer systems meet the proper pressure, bacteria and mandrel tests. In addition, the contractor shall provide a VHS format video tape of the sanitary sewer.
 - Prior to starting construction, the contractor shall contact the utility companies to located existing facilities. These include but may not be limited to the following:
 - Town of Addison
 - Lone Star Gas
 - Southwestern Bell
 - Storer Cable
 - Planned Cable Systems
 - TU Electric
 - Prior to beginning construction, the owner or his authorized representative shall convene a Pre-Construction Conference between the Town of Addison, Consulting Engineer, Contractor(s), Utility companies and any other affected parties. Notify Bruce Ellis at 450-2847 at least 48-hours prior to beginning of construction.
 - Any existing pavement, curbs, and/or sidewalks damaged or removed will be repaired by the contractor at their expense.
 - Lot pins shall be installed after construction and prior to final acceptance; concrete monuments shall be placed as shown on the final plat and iron pins shall be placed at block corners, curve points and angle points in public right-of-way. Concrete monuments shall be six (6) inches in diameter and twenty-four (24) inches long. An iron rod one-half inch in diameter embedded at least three (3) inches in the monument at the exact intersection point of the monument. The monuments shall be set at such an elevation that after construction, the top of the monument will be not less than twelve (12) inches below the ground surface.
 - The contractor shall stamp a 2-inch "S" and 2-inch "W" in the curb at the location of the sewer service and water service lines, respectively.
 - At intersections that have valley drainage, the crown of the intersecting streets will culminate in a distance of 40 feet from the intersecting curb line unless otherwise noted.
 - Temporary or permanent street barricades shall remain at all point of ingress and egress to prevent public use until such street received final acceptance.
 - Contractor shall obtain a right-of-way permit by the Town of Addison for working within the public right-of-way.
 - During construction, the owner shall provide a qualified geotechnical lab to perform materials testing during the construction, at the request of the Town of Addison.
 - The contractor shall submit material sheets to the Town of Addison for approval prior to incorporating materials into the job.
 - The utility contractor shall submit to the Town of Addison for approval a trench safety plan sealed by a registered professional engineer for the installation of utilities greater than five (5) feet in depth.

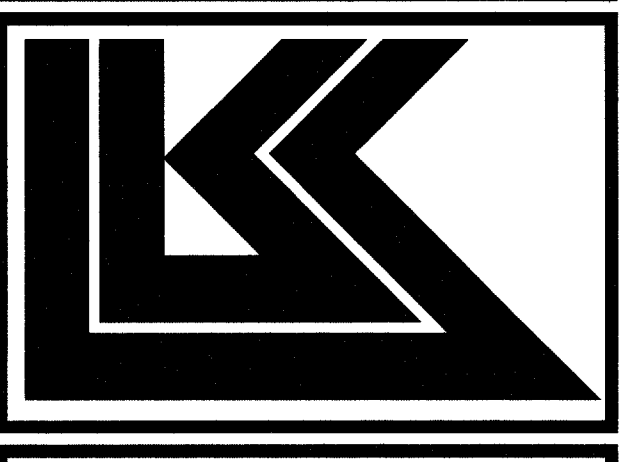
- PAVING AND DRAINAGE GENERAL NOTES**
- ALL WORK, UNLESS OTHERWISE NOTED, SHALL CONFORM TO THE STANDARD SPECIFICATIONS FOR PUBLIC WORKS CONSTRUCTION, ISSUED BY THE NORTH CENTRAL TEXAS COUNCIL OF GOVERNMENTS, AND TOWN OF ADDISON STANDARD CONSTRUCTION SPECIFICATIONS.
 - UNLESS OTHERWISE NOTED, ALL CONCRETE SHALL BE CLASS "A", (3000 PSI).
 - THE HORIZONTAL AND VERTICAL LOCATIONS OF EXISTING SUBSURFACE UTILITIES HAVE BEEN DETERMINED FROM DATA RECORDED BY OTHERS. CONTRACTOR SHALL VERIFY THAT NECESSARY CROSSING CLEARANCES BETWEEN EXISTING AND PROPOSED UTILITIES EXIST PRIOR TO CONSTRUCTION OF ANY SUCH CROSSING. IT WILL BE THE RESPONSIBILITY OF THE CONTRACTOR TO PROTECT ALL PUBLIC UTILITIES IN THE CONSTRUCTION OF THIS PROJECT.
 - CONTRACTOR SHALL MAINTAIN ONE SET OF "RECORD DRAWINGS" ON SITE WHICH WILL BE SUBMITTED TO OWNER OR ENGINEER UPON COMPLETION OF THE PROJECT. RECORD DRAWINGS SHALL INDICATE THE LOCATION OF ALL SUBTERRANEAN UTILITY IMPROVEMENTS, AND INDICATE TIES TO ALL MANHOLES, CULVERTS, INLETS, JUNCTION BOXES, ETC.
 - THE CONTRACTOR IS RESPONSIBLE FOR COMPLIANCE WITH ALL FEDERAL, STATE AND LOCAL REGULATIONS REGARDING TRENCH SAFETY.
 - STORM DRAIN LINES MAY BE OF THE FOLLOWING MATERIALS:
 - ROP C-76, CLASS III
 - INSTALLED IN ACCORDANCE WITH MANUFACTURER'S SPECIFICATIONS.
 - BARRICADING AND PROJECT SIGNS SHALL CONFORM TO THE "TEXAS MANUAL ON UNIFORM TRAFFIC CONTROL DEVICES, PART VI".
 - PRIOR TO COMMENCEMENT OF CONSTRUCTION, BONDS AND THREE-WAY CONTRACTS SHALL BE SUBMITTED TO THE CITY AS REQUIRED.
- WATER AND SANITARY SEWER GENERAL NOTES**
- ALL WORK, UNLESS OTHERWISE NOTED, SHALL CONFORM TO THE STANDARD SPECIFICATIONS FOR PUBLIC WORKS CONSTRUCTION, ISSUED BY THE NORTH CENTRAL TEXAS COUNCIL OF GOVERNMENTS, AND TOWN OF ADDISON STANDARD CONSTRUCTION SPECIFICATIONS.
 - UNLESS OTHERWISE NOTED, ALL CONCRETE SHALL BE CLASS "A", (3000 PSI).
 - THE HORIZONTAL AND VERTICAL LOCATIONS OF EXISTING SUBSURFACE UTILITIES HAVE BEEN DETERMINED FROM DATA RECORDED BY OTHERS. CONTRACTOR SHALL VERIFY THAT NECESSARY CROSSING CLEARANCES BETWEEN EXISTING AND PROPOSED UTILITIES EXIST PRIOR TO CONSTRUCTION OF ANY SUCH CROSSING. IT WILL BE THE RESPONSIBILITY OF THE CONTRACTOR TO PROTECT ALL PUBLIC UTILITIES IN THE CONSTRUCTION OF THIS PROJECT.
 - CONTRACTOR SHALL MAINTAIN ONE SET OF "RECORD DRAWINGS" ON SITE WHICH WILL BE SUBMITTED TO OWNER OR ENGINEER UPON COMPLETION OF THE PROJECT. RECORD DRAWINGS SHALL INDICATE THE LOCATION OF ALL SUBTERRANEAN UTILITY IMPROVEMENTS, AND INDICATE TIES TO ALL MANHOLES, CULVERTS, INLETS, JUNCTION BOXES, ETC.
 - ALL WATER MAINS SHALL BE PROTECTION OR PVC C900, DR 14, CLASS 200. CATHODIC PROTECTION.
 - ALL WATER MAINS UNLESS OTHERWISE NOTED SHALL HAVE A MINIMUM COVER OF 48" BELOW FINISHED GRADE.
 - SANITARY SEWER PIPE SHALL BE PVC SDR-35, OR SDR-26 AS NOTED.
 - THE CONTRACTOR IS RESPONSIBLE FOR COMPLIANCE WITH ALL FEDERAL, STATE AND LOCAL REGULATIONS REGARDING TRENCH SAFETY.
 - BARRICADING AND PROJECT SIGNS SHALL CONFORM TO "STATE DEPARTMENT OF HIGHWAYS AND PUBLIC TRANSPORTATION BARRICADING AND CONSTRUCTION STANDARDS".
 - PRIOR TO COMMENCEMENT OF CONSTRUCTION, BONDS AND THREE-WAY CONTRACTS SHALL BE SUBMITTED TO THE CITY AS REQUIRED.
 - WHERE A SANITARY SEWER PARALLELS A WATER LINE, THE SEWER SHALL BE CONSTRUCTED OF CAST IRON, DUCTILE IRON OR PVC MEETING ASTM SPECIFICATIONS WITH A PRESSURE RATING FOR BOTH THE PIPE AND JOINTS OF 150 PSI. THE VERTICAL SEPARATION SHALL BE MINIMUM OF TWO FEET BETWEEN OUTSIDE DIAMETERS AND THE HORIZONTAL SEPARATION SHALL BE A MINIMUM OF FOUR FEET BETWEEN OUTSIDE DIAMETERS. THE SEWER SHALL BE LOCATED BELOW THE WATER LINE.

RECORD DRAWING	
THIS DRAWING HAS BEEN REVISED TO REFLECT CONSTRUCTION RECORDS MAINTAINED AND PROVIDED BY THE CONTRACTOR FOR THIS PROJECT.	
CONTRACTOR: SOUTHERN MECHANICAL PLUMBING, INC. 400 S. ASTON SUNNYVALE, TEXAS 75182	
DATE REVISED: 29 MARCH 1996	

PACHECO KOCH		9401 LBJ Freeway, Suite 300	
Consulting Engineers, Inc.		Dallas, Texas 75243	
Civil Engineering • Land Surveying		(214) 235-8031	
STANDARD DETAILS			
SUMMERFIELD SUITES HOTEL			
ARAPAHO ROAD			
QUORUM CENTER ADDITION			
TOWN OF ADDISON, TEXAS			
DESIGN	DRAWN	DATE	SCALE
JAK	BS	4/27/95	1"=30'

PRINTS ISSUED		
DATE	PURPOSE	NO.

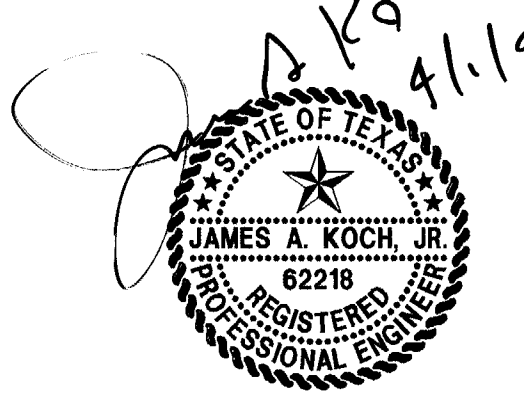
FOR CONSTRUCTION:		
REVISIONS		
DATE	ITEM	NO.



LAW/KINGDON, INC.
ARCHITECTS & ENGINEERS
345 RIVERVIEW WICHITA, KS 67203
Phone (316) 266-9255 Fax (316) 266-9255
Copyright © 1994

BRAWN	CHECKED
BB	JAK
RELATED DRAWINGS	
SHELL	
DETAILS	
STRUCTURE	
MECHANICAL	
ELECTRICAL	
OTHER	
SEQUENCE NUMBER	
OF _____ SHEETS	

REVISED: MARCH 29, 1996



SUMMERFIELD SUITES HOTEL	
ARAPAHO ROAD	
QUORUM CENTER ADDITION	
TOWN OF ADDISON, TEXAS	
PROJECT NUMBER	94780

STANDARD DETAILS	
SHEET TITLE	
SHEET NUMBER	
C-7	
7 OF 7 SHEETS	