

DATE	PURPOSE	NO.

FOR CONSTRUCTION		
DATE	REVISIONS	NO.



LAW/KINGDON, INC.
ARCHITECTS & ENGINEERS
515 WEST 15TH STREET, SUITE 200
DALLAS, TEXAS 75202
PHONE (214) 520-0100
FAX (214) 520-0101
COPYRIGHT © 1994

DATE	BY	CHECKED

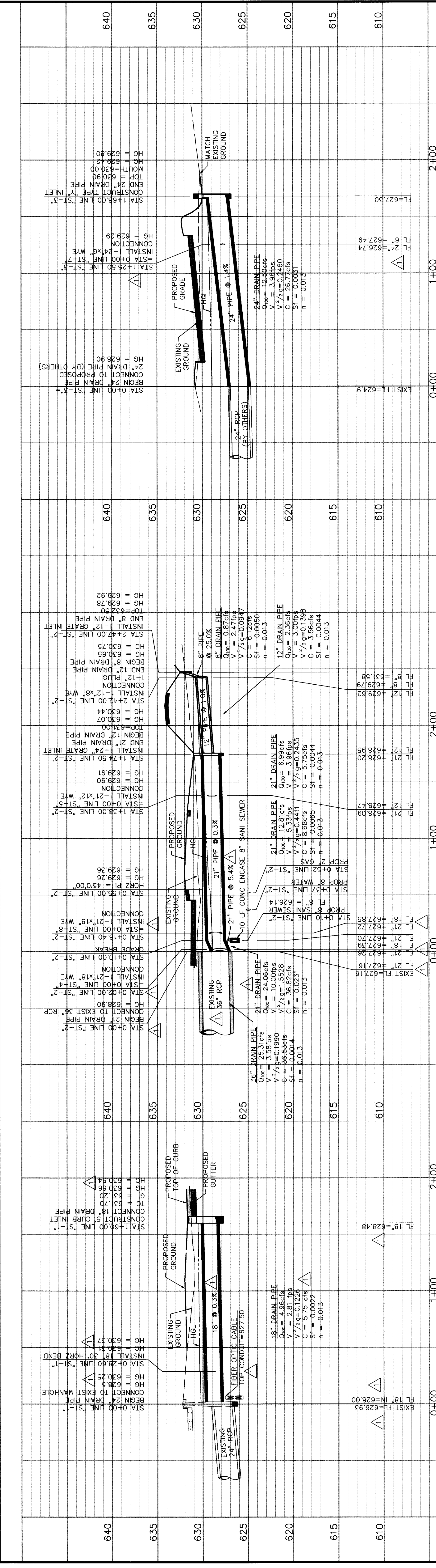
RELATED DRAWINGS

SEQUENCE NUMBER	DF	SHEETS

SUMMERFIELD SUITES HOTEL
ADDISON, TEXAS
PROJECT NUMBER 94780

STORM DRAIN PROFILE
SHEET NUMBER

NO.	FILE	NOTES	DATE	SCALE



STORM DRAIN LINE 'ST-1' PROFILE

STORM DRAIN LINE 'ST-2' PROFILE

STORM DRAIN LINE 'ST-3' PROFILE

ELEVATION	STATION	DESCRIPTION
640		
635		
630		
625		
620		
615		
610		
0+00		
1+00		
2+00		

PACHECO KOCH Consulting Engineers, Inc.
9401 LBJ Freeway, Suite 300
Dallas, Texas 75243
(214) 530-5001
Civil Engineering • Land Surveying

STORM DRAIN PROFILE
SUMMERFIELD SUITES HOTEL
ARAPAHO ROAD
QUORUM CENTER ADDITION
CITY OF ADDISON, TEXAS

DESIGN DRAWN DATE SCALE NOTES FILE NO.
JAK BB 4/27/95 1"=40'H
1"=5'V

RECORD DRAWING
THIS DRAWING HAS BEEN REVISED TO REFLECT
CONSTRUCTION RECORDS MAINTAINED AND
PROVIDED BY THE CONTRACTOR FOR THIS PROJECT.
CONTRACTOR: SOUTHERN MECHANICAL PLUMBING, INC.
400 S. ASTON
SUNNYVALE, TEXAS 75182
DATE REVISED: 29 MARCH 1996

BENCH MARKS:
1. "DT" CUT ON S.E. CORNER OF SIDEWALK AT THE ENTRANCE TO 4805 ARAPAHO RD.
APPROX 4400 FEET EAST OF ADDISON RD. ELEV. 630.66
2. "DT" ON SOUTH RIM OF MANHOLE LOCATED ON THE SOUTH SIDE OF ARAPAHO RD
AT THE NORTHEAST CORNER OF SITE, APPROX. 16.5' EAST OF THE WEST END OF
SIDEWALK. ELEV. 632.25

REVISED: MARCH 29, 1996
REVISED: JULY 13, 1995