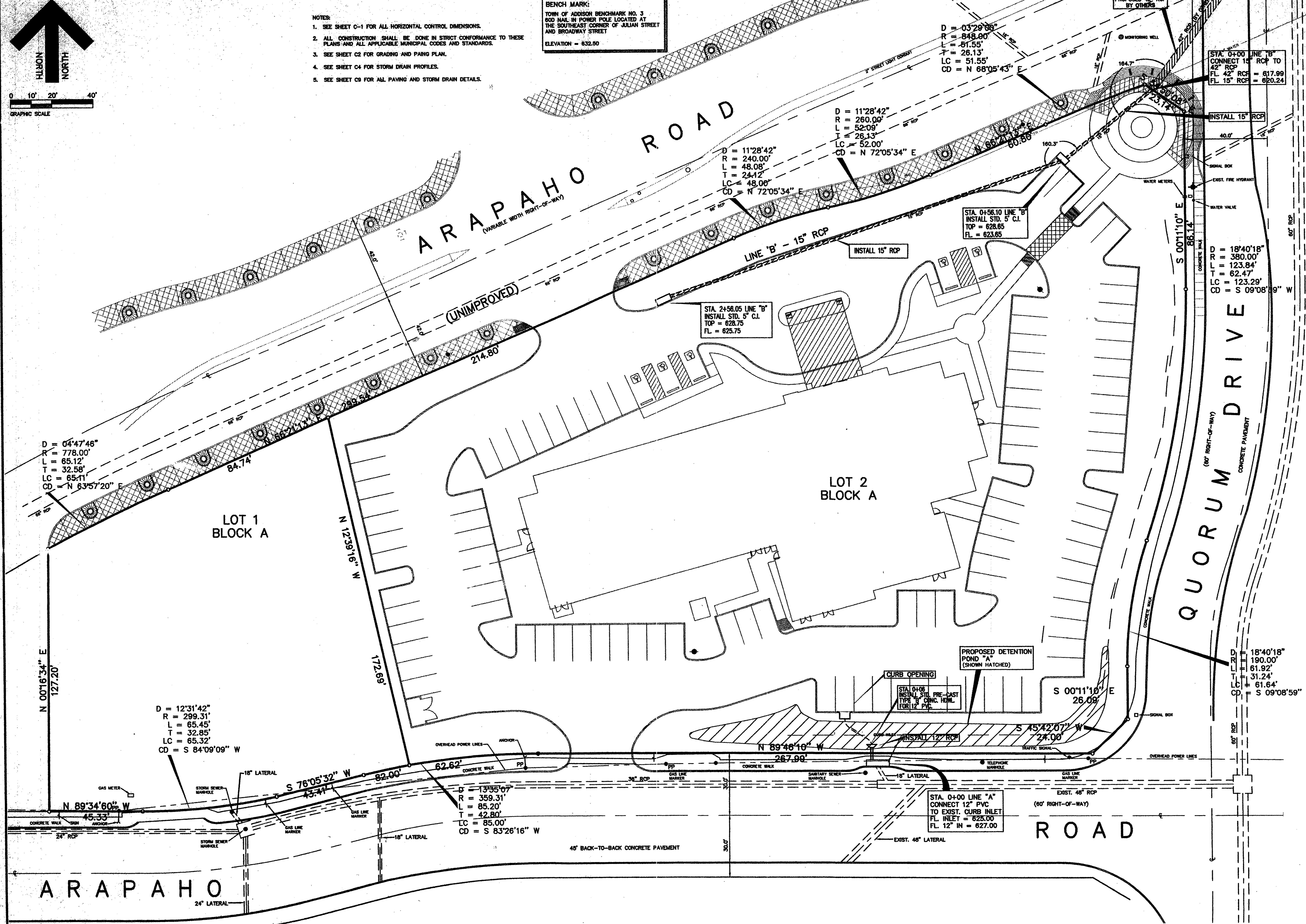


- NOTES:
1. SEE SHEET C-1 FOR ALL HORIZONTAL CONTROL DIMENSIONS.
  2. ALL CONSTRUCTION SHALL BE DONE IN STRICT CONFORMANCE TO THESE PLANS AND ALL APPLICABLE MUNICIPAL CODES AND STANDARDS.
  3. SEE SHEET C2 FOR GRADING AND PAING PLAN.
  4. SEE SHEET C4 FOR STORM DRAIN PROFILES.
  5. SEE SHEET C9 FOR ALL PAVING AND STORM DRAIN DETAILS.

BENCH MARK:  
 TOWN OF ADDISON BENCHMARK NO. 3  
 800 NAIL IN POWER POLE LOCATED AT  
 THE SOUTHEAST CORNER OF JULIAN STREET  
 AND BROADWAY STREET  
 ELEVATION = 832.80



**JDJR** ENGINEERS & CONSULTANTS, INC.  
 ENGINEERS • LAND PLANNERS • CAD DESIGNS  
 2008 Texas Drive, Suite 500, Irving, Texas 75038  
 Tel: 972-252-0438 • Fax: 972-273-8888



PROJECT: WINGATE INN  
 ARAPAHO ROAD AT QUORUM DRIVE  
 LOT 2 BLOCK "A"  
 WINGATE INN OF ADDISON ADDITION  
 ADDISON, TEXAS

REVISIONS:

DATE	REVISION
6/22/98	QTY COMMENTS
7/06/98	QTY COMMENTS
7/20/98	REVISE LINE 'A'
8/3/98	UPDATE SET

SHEET TITLE  
**STORM DRAIN PLAN**

DATE: 5-22-98  
 SCALE: 1" = 20'  
 DRAWN BY: J.N.M.  
 CHECKED BY: J.D.R.  
 SHEET NO.  
**C3 of 9**  
 J.D.R. FILE NO. 98-022