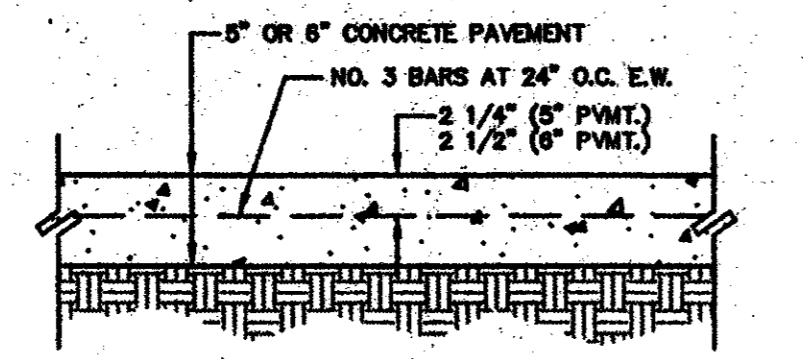
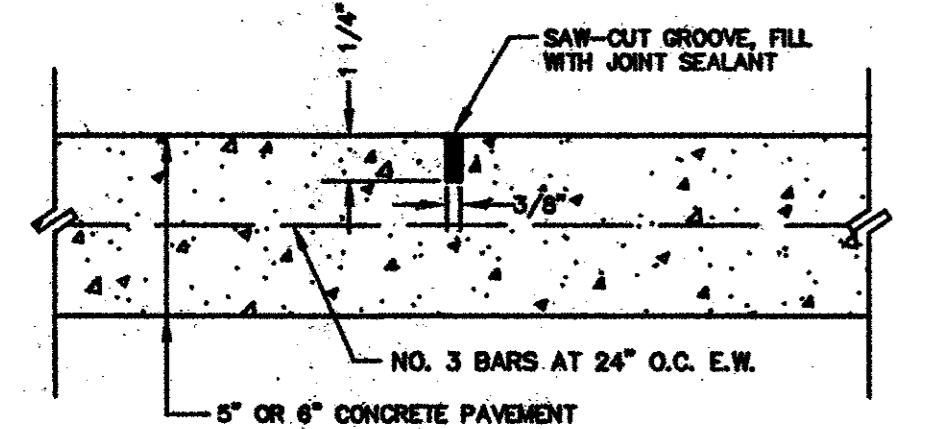


NOTE: CONSTRUCT CONSTRUCTION JOINT WHENEVER THE PLACEMENT OF CONCRETE IS SUSPENDED FOR MORE THAN 30 MINUTES.

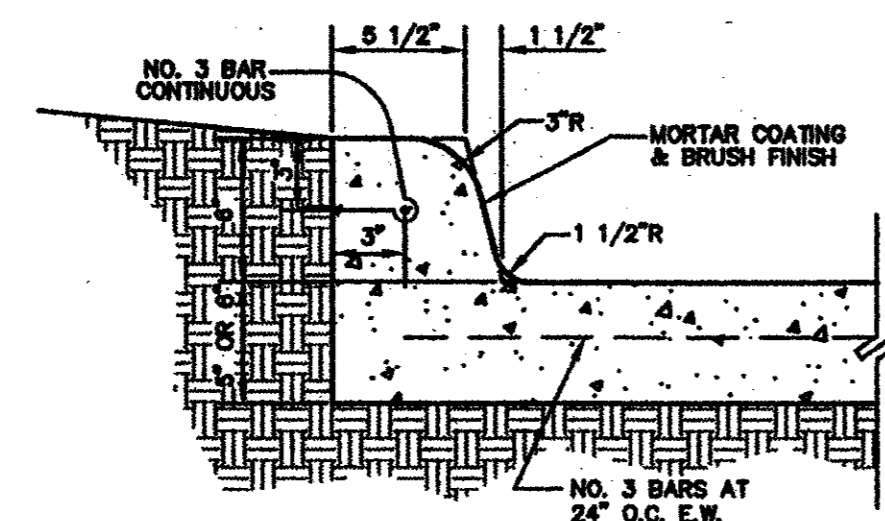
CONSTRUCTION JOINT DETAIL
NOT TO SCALE



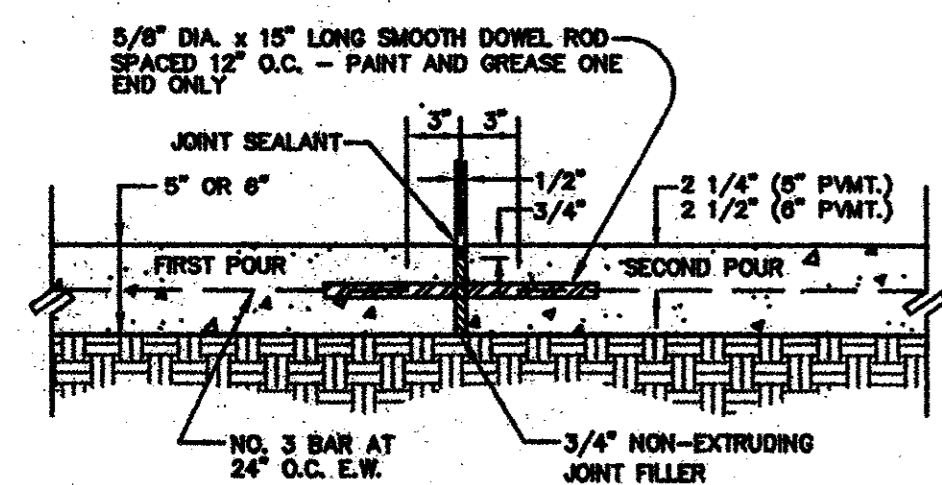
CONCRETE PAVEMENT SECTION DETAIL
NOT TO SCALE



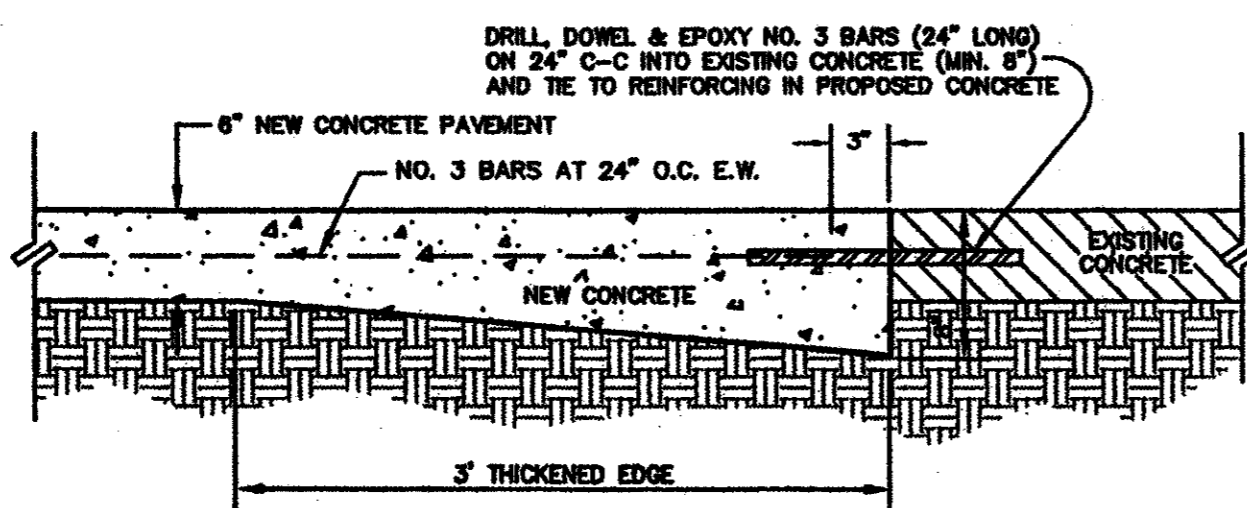
CONTRACTION JOINT DETAIL
NOT TO SCALE



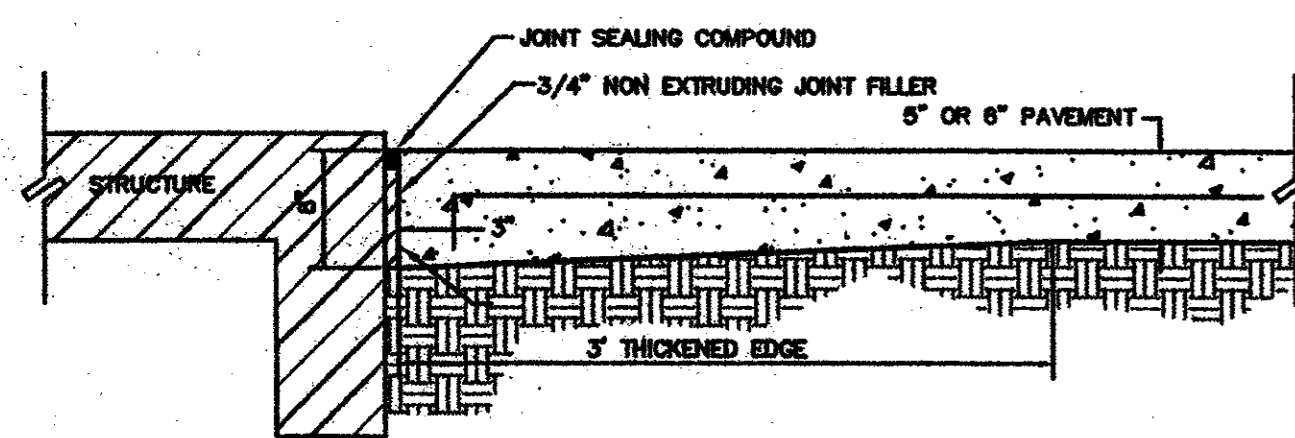
NOTE: TRANSVERSE SLOPE AT THE CURB VARIES - SEE PLAN VIEW.
INTEGRAL CURB DETAIL
NOT TO SCALE



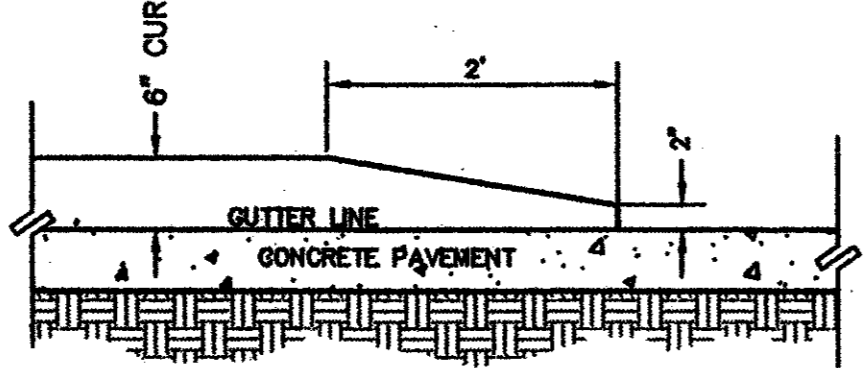
EXPANSION JOINT DETAIL
NOT TO SCALE



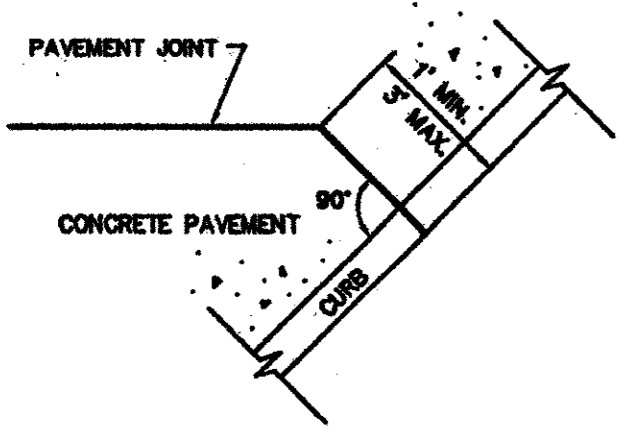
NEW CONCRETE TO EXISTING CONCRETE DETAIL
NOT TO SCALE



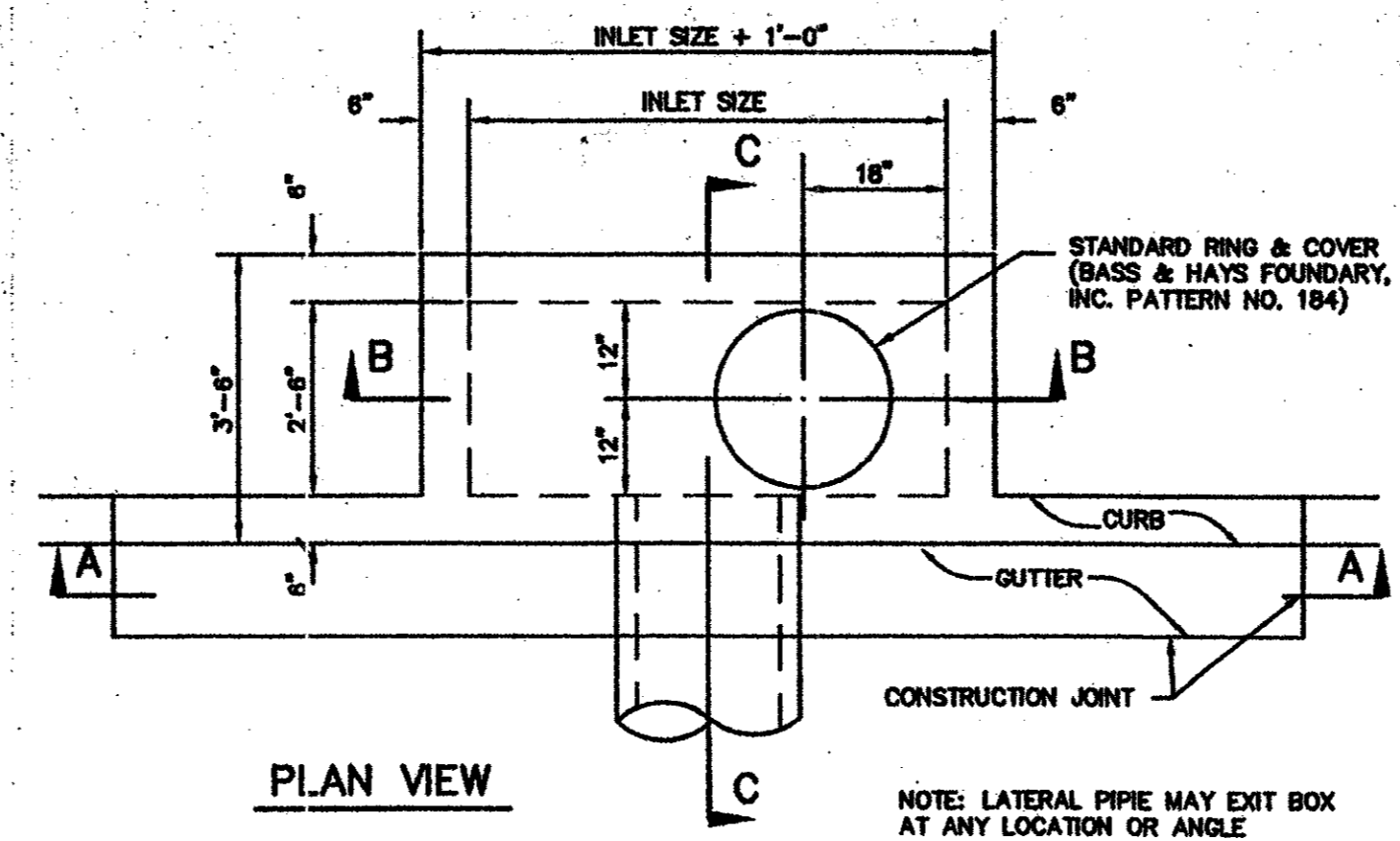
EXPANSION JOINT AT STRUCTURE DETAIL
NOT TO SCALE



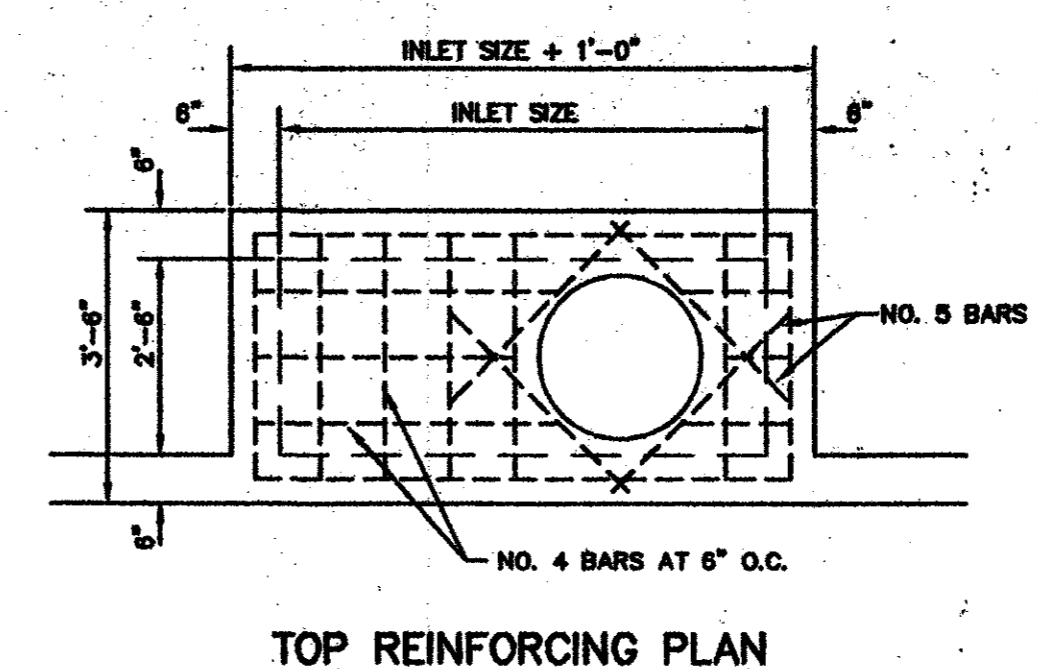
CURB TERMINAL DETAIL
NOT TO SCALE



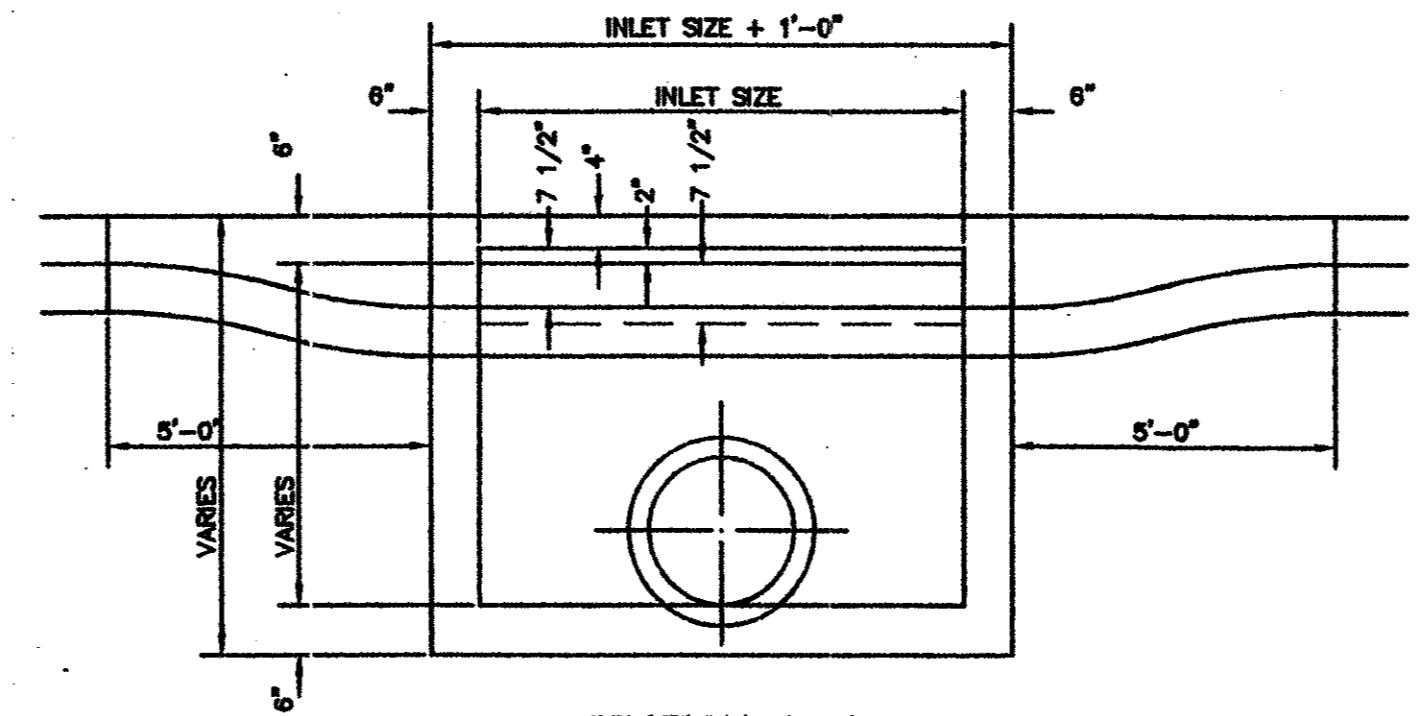
DETAIL OF PAVEMENT JOINT AT CURB
NOT TO SCALE



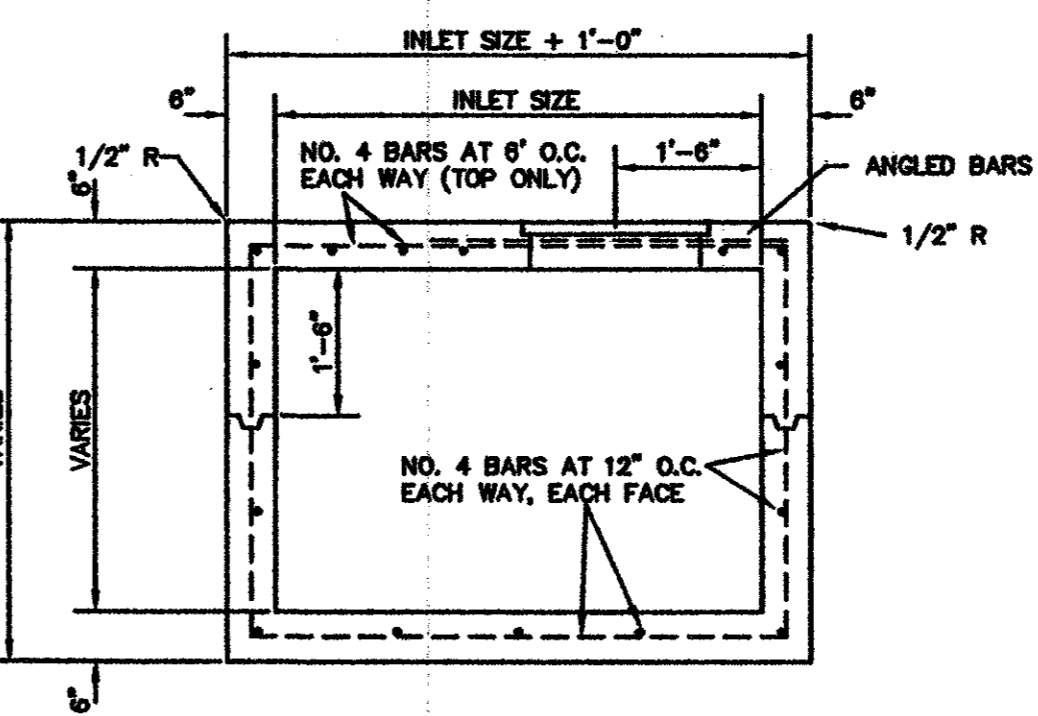
PLAN VIEW
NOTE: LATERAL PIPE MAY EXIT BOX AT ANY LOCATION OR ANGLE



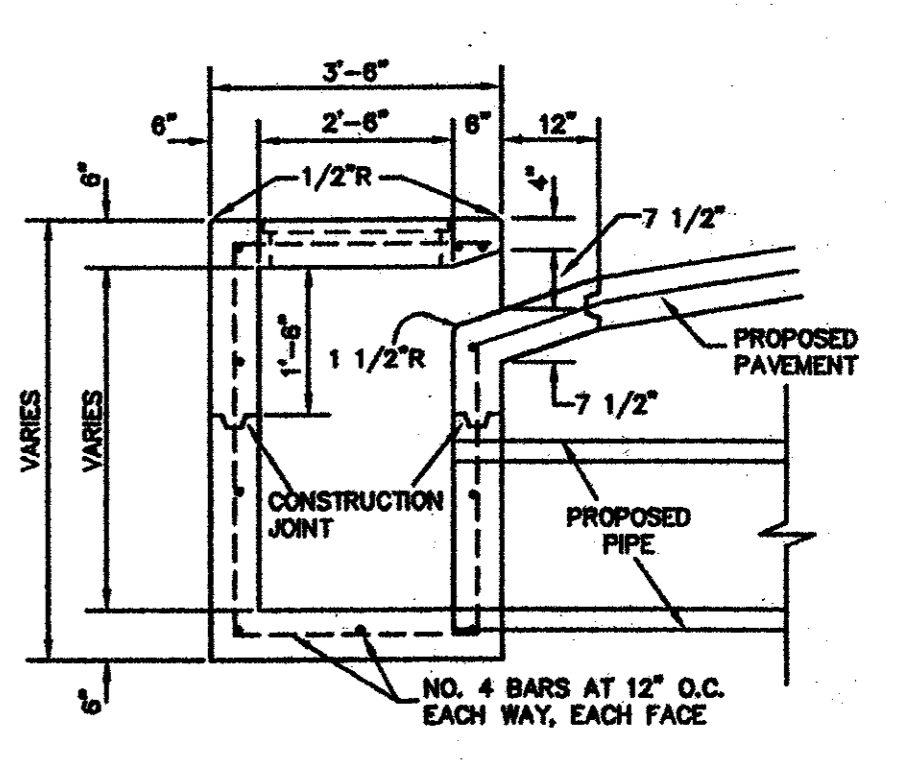
TOP REINFORCING PLAN



SECTION A-A



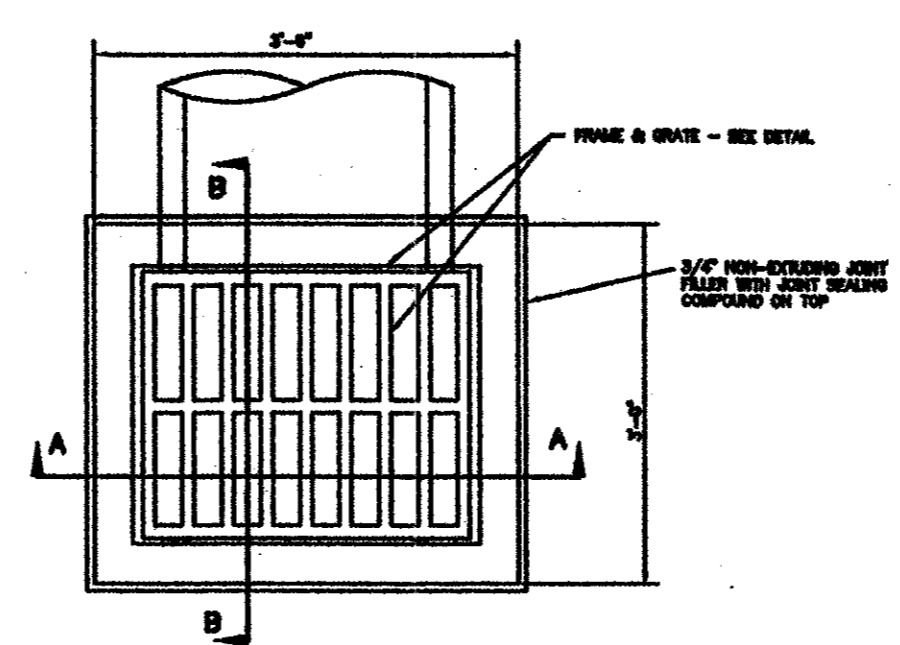
SECTION B-B



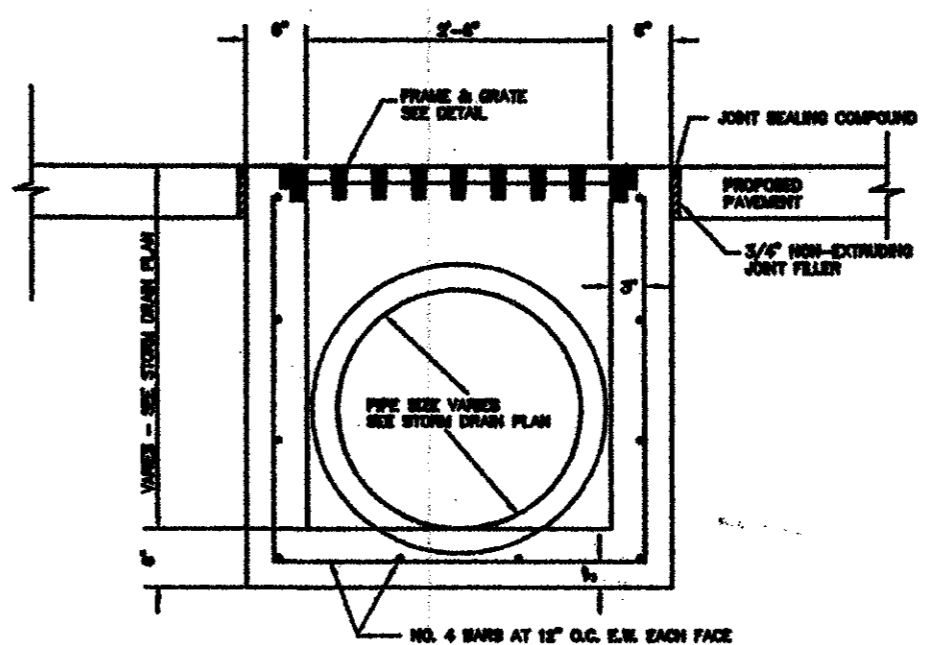
SECTION C-C

CURB INLET DETAILS

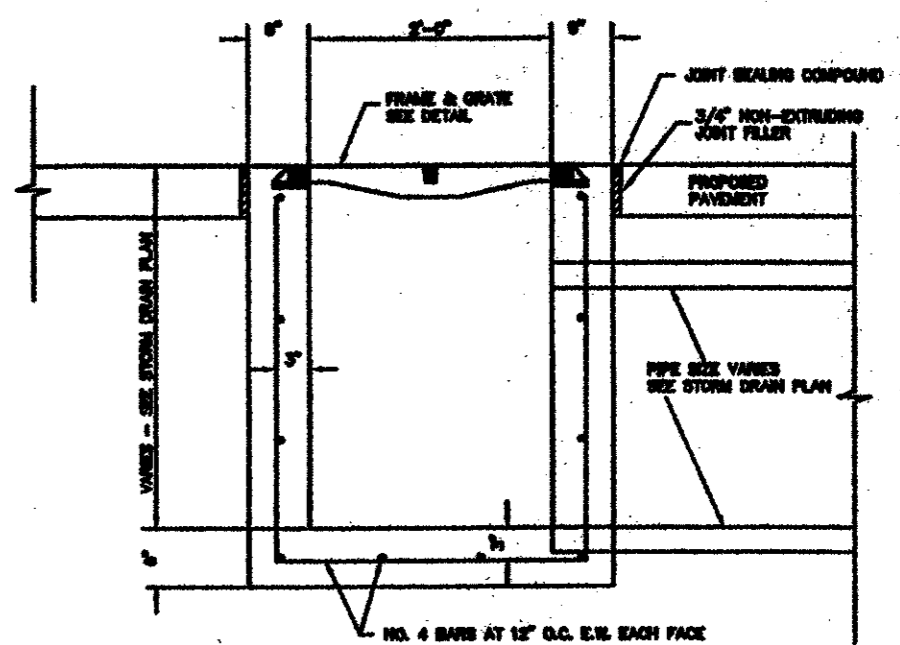
NOT TO SCALE



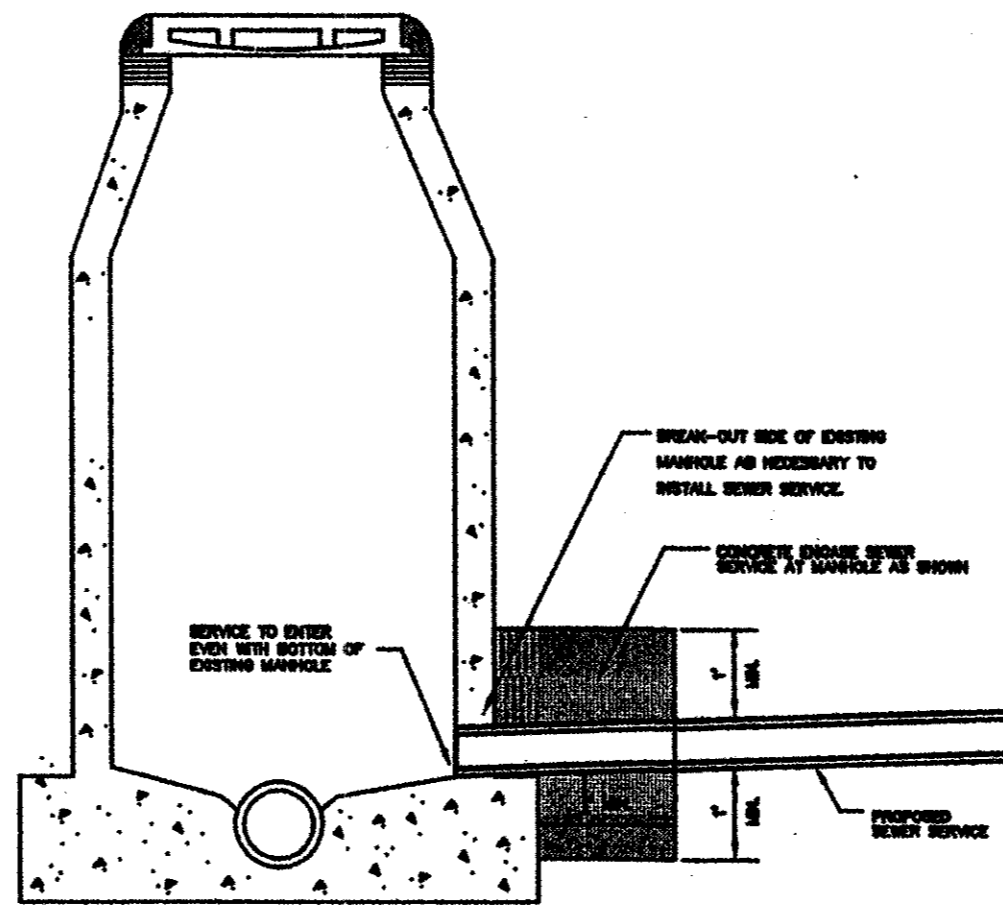
GRATE INLET DETAIL - PLAN VIEW



SECTION A-A

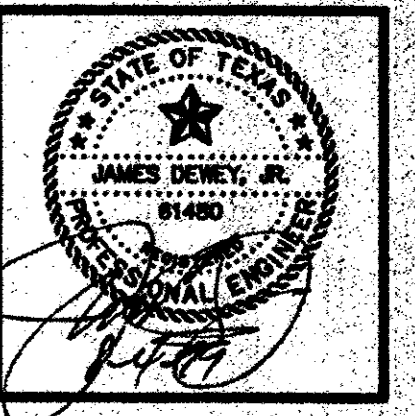


SECTION B-B



SANITARY SEWER SERVICE CONNECTION DETAIL (AT MANHOLE)
NOT TO SCALE

- NOTES:
1. FRAME AND GRATE TO BE BASS & HAYES PATTERN NO. 2632 D DUCTILE IRON FRAME & GRATE, DALLAS COUNTY TYPE "L" INLET, OR APPROVED EQUAL.
 2. EVEN BEARING BETWEEN INLET FRAME AND GRATE WILL BE REQUIRED, CRIBBING DOWN METAL WHERE NECESSARY. FRAME & GRATE WILL BE MATCH MARKED TO INSURE PROPER FIT IN FIELD.
 3. ALL CONCRETE SHALL BE CLASS "A"
 4. ALL DIMENSIONS TO REINFORCING STEEL ARE TO CENTERS OF BARS.
 5. LATERAL PIPE MAY ENTER AT ANY LOCATION.



PROJECT: WINGATE INN
ARAPAHO ROAD AT QUORUM DRIVE
LOT 2 BLOCK "A"
WINGATE INN OF ADDISON ADDITION
ADDISON, TEXAS

REVISIONS:	
DATE	REVISION
6/22/98	CITY COMMENTS
7/06/98	CITY COMMENTS
7/20/98	REVISE LINE 'A'
8/3/98	UPDATE SET

SHEET TITLE
PAVING, STORM DRAIN AND UTILITY DETAILS

DATE: 5-22-98
SCALE: 1" = 20"
DRAWN BY: J.N.M.
CHECKED BY: JDJR
SHEET NO.
C9 OF 9
JDJR FILE NO. 98-022