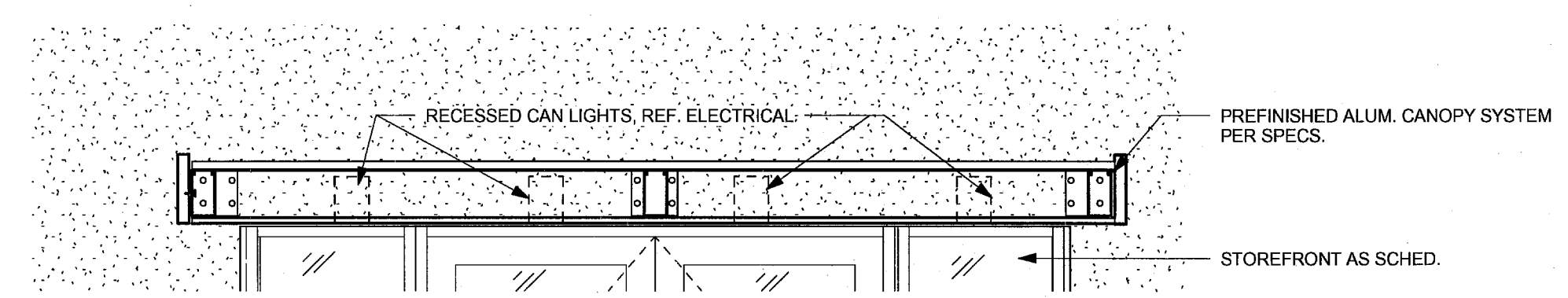
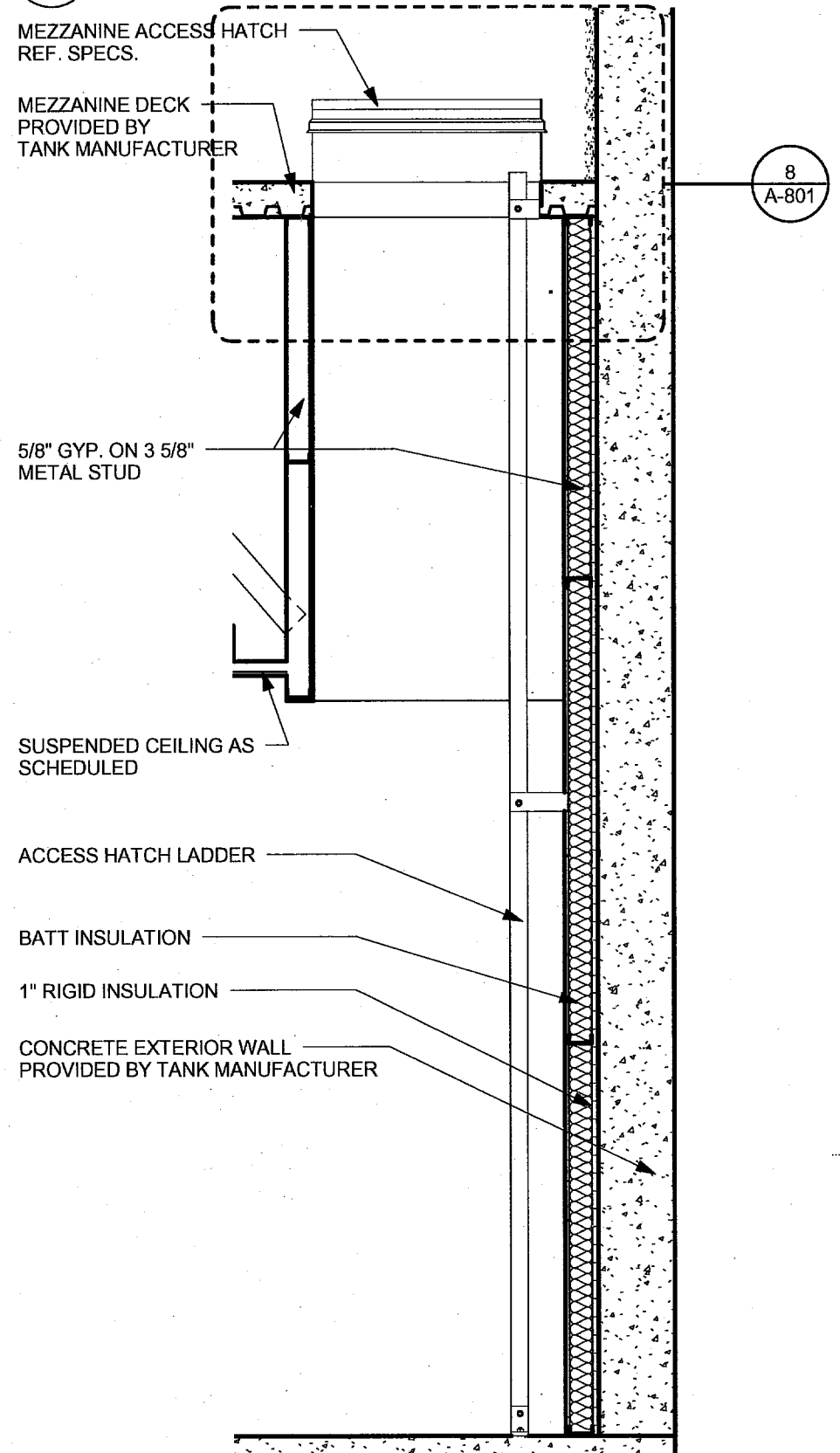


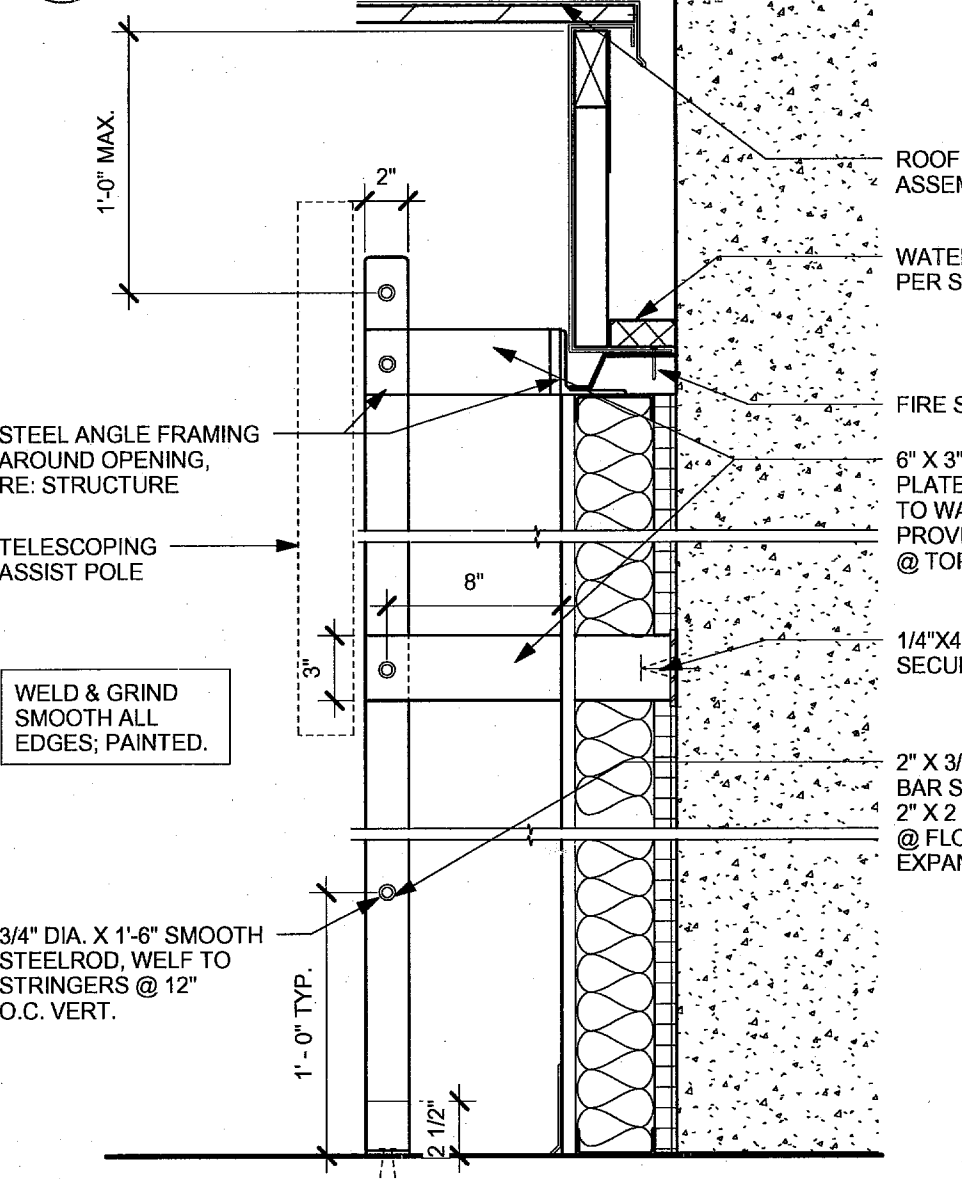
**1 Canopy Detail**  
 1/2" = 1'-0"



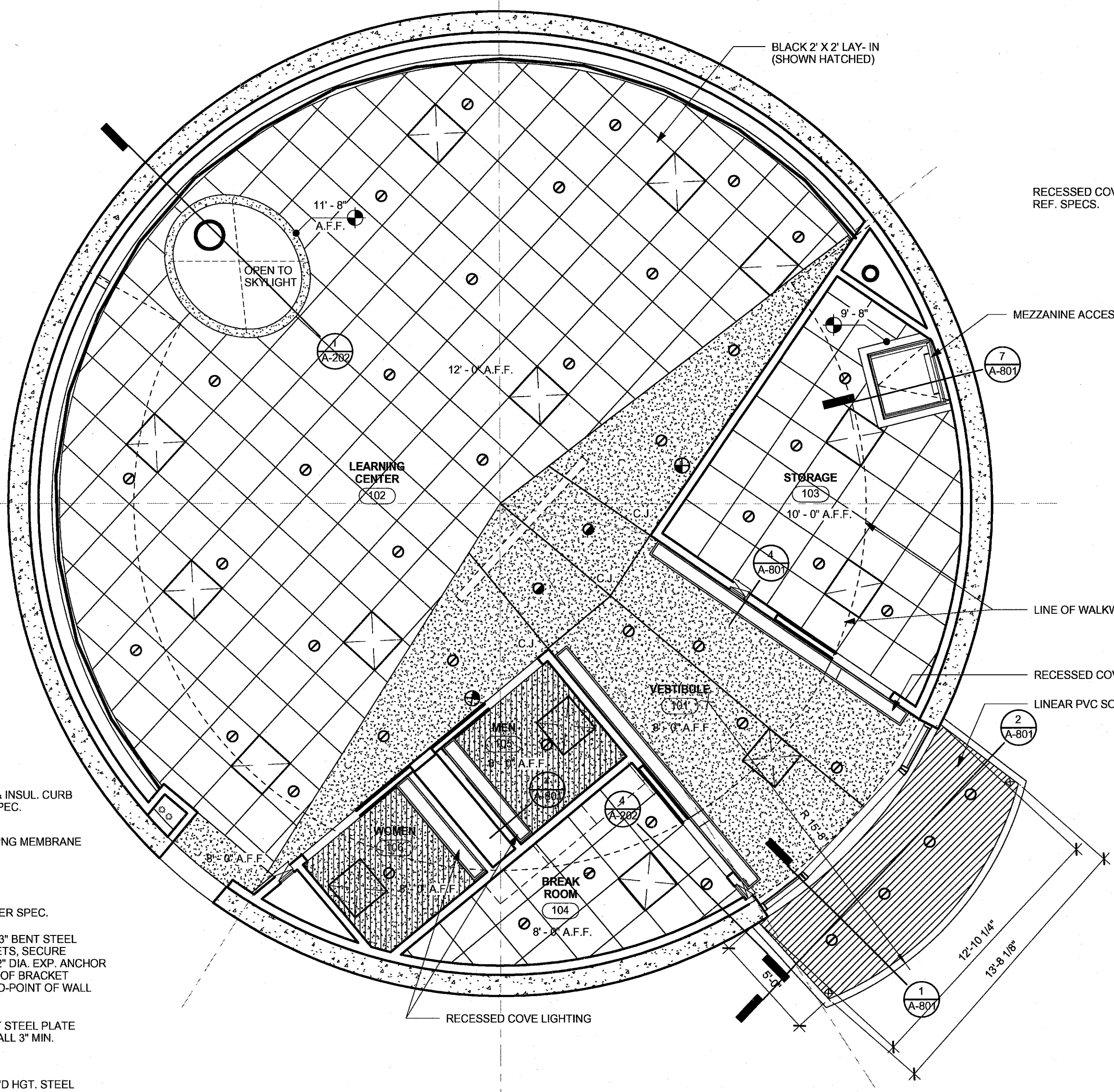
**2 Canopy Detail 2**  
 1/2" = 1'-0"



**7 Access Ladder**  
 1/2" = 1'-0"



**8 Access Hatch Detail**  
 1 1/2" = 1'-0"

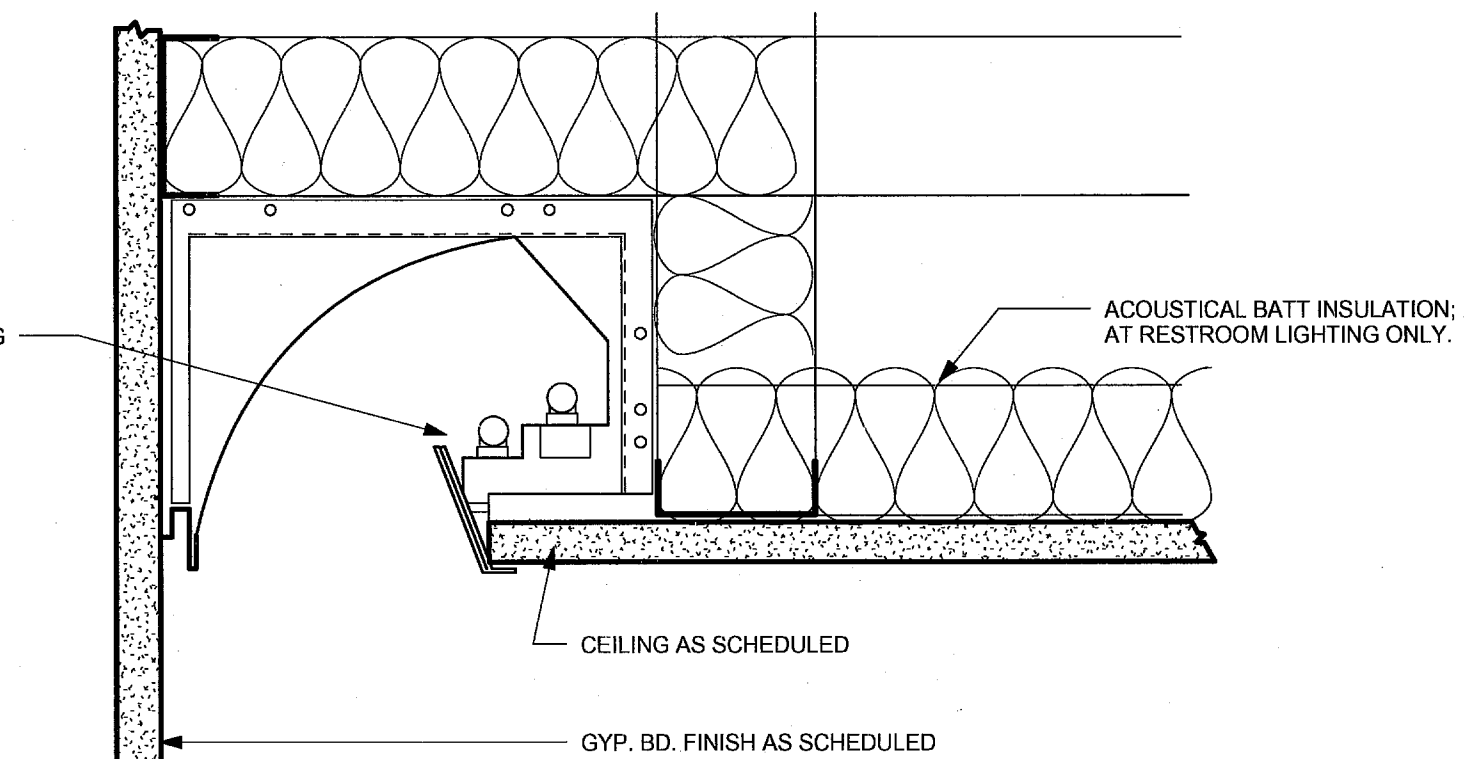


**3 Reflected Ceiling Plan - Level 1**  
 1/4" = 1'-0"

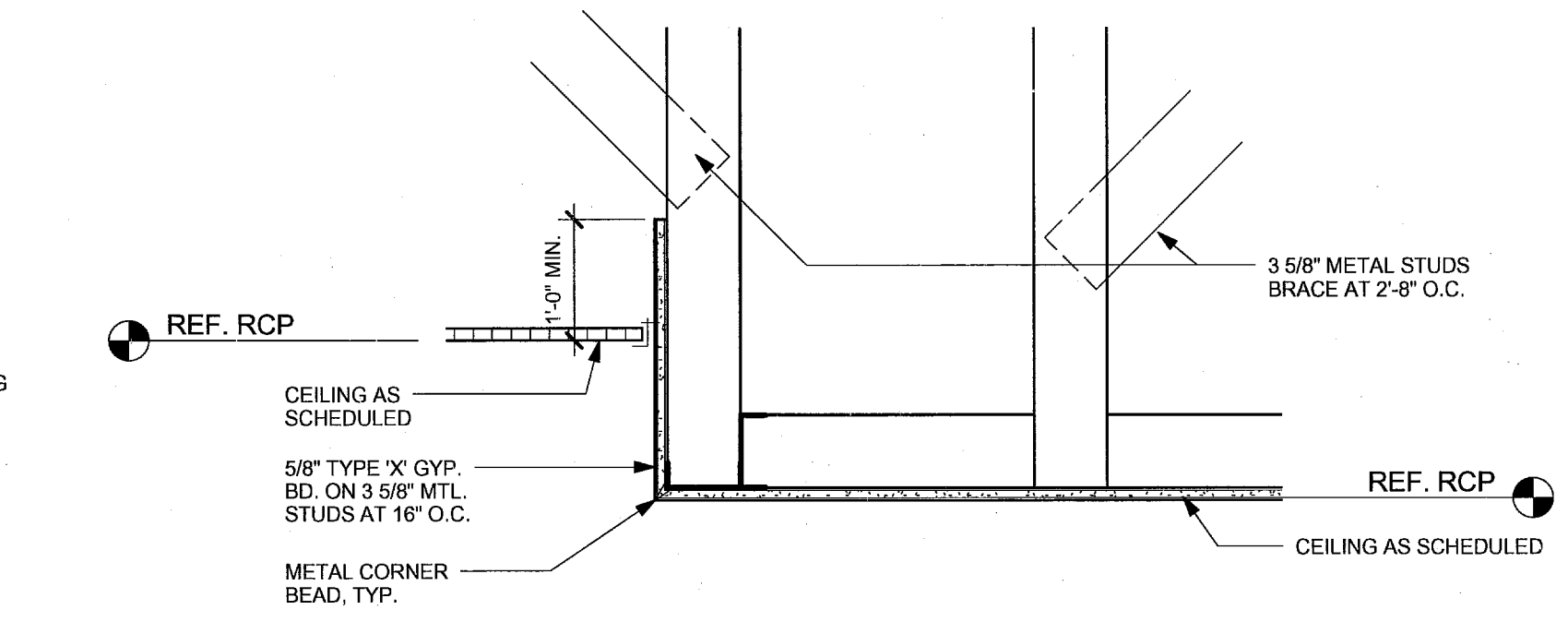
### REFLECTED CEILING PLAN LEGEND

○	SURFACE MOUNTED LIGHT FIXTURE - REF. ELEC.	●	RECESSED DOWN LIGHT FIXTURE - WALL WASHER- REF. ELEC.
○	RECESSED DOWN LIGHT FIXTURE - REF. ELEC.	⊗	SMOKE DETECTOR
⊗	RECESSED DOWN LIGHT FIXTURE - REF. ELEC. (EMERGENCY CIRCUIT)	⊠	H.V.A.C. DIFFUSER - REF. MECH.
⊗	CEILING MOUNTED EXIT LIGHT - REF. ELEC.	⊠	H.V.A.C. RETURN AIR GRILLE - REF. MECH.
●	SPEAKER LOCATION - REF. ELEC.	⊠	ROOF ACCESS HATCH
⊠	FIRE HORN, ALARM, AND STROBE	□	2' X 2' LAY-IN CEILING AND GRID
⊠	FIRE STROBE	▨	GYP. BOARD CEILING, TAPE, BED, TEXTURE AND PAINT
□	PROJECTOR, BY OWNER	▨	GYP. BOARD CEILING WITH ACOUSTICAL CEILING ABOVE, TAPE, BED, TEXTURE AND PAINT
▨	PROJECTOR SCREEN	▨	STUCCO/PLASTER, TEXTURE AND PAINT
		▨	X-30" A.F.F. CEILING HEIGHT ABOVE FINISH FLOOR

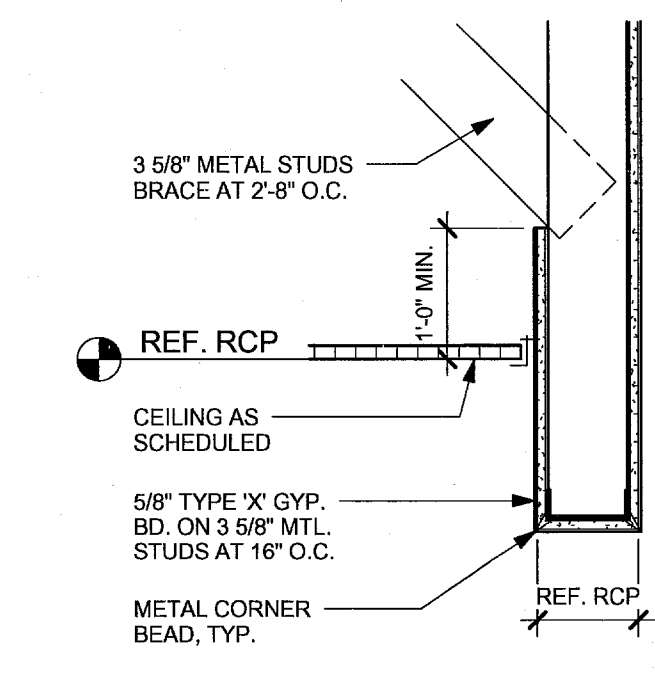
NOTE: SYMBOLS ARE TYPICAL; ALL MAY NOT BE APPLICABLE



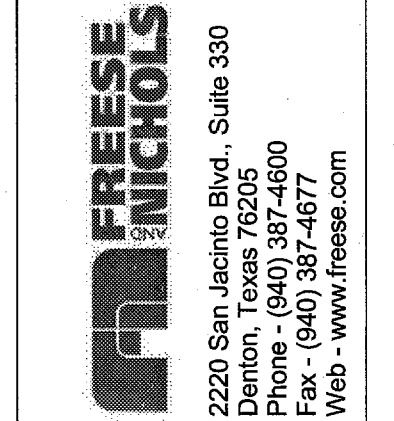
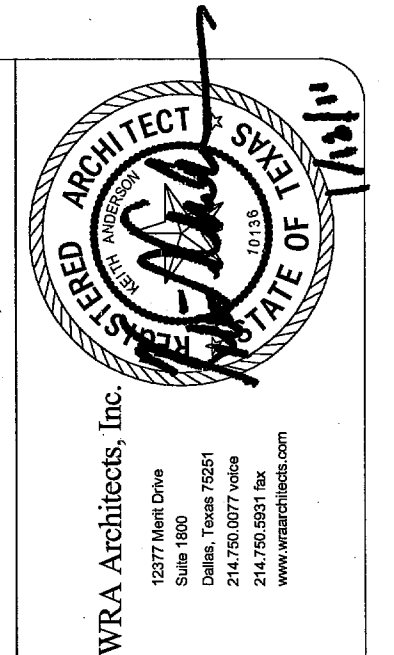
**4 Recessed Cove Lighting**  
 3" = 1'-0"



**5 Furr Down Detail**  
 1 1/2" = 1'-0"



**6 Furr Down Detail 2**  
 1 1/2" = 1'-0"



Town of Addison, Texas  
**SURVEYOR 1.5 MG EST**  
 ARCHITECTURE  
**Level 1 - R.C. Plan**

NO.	DATE	ISSUE	BY	DATE	ISSUE	BY	DATE	ISSUE	BY	DATE	ISSUE

VERIFY SCALE Bar is one inch on original drawing. If not one inch on this sheet, adjust scale.

SHEET **A-801**