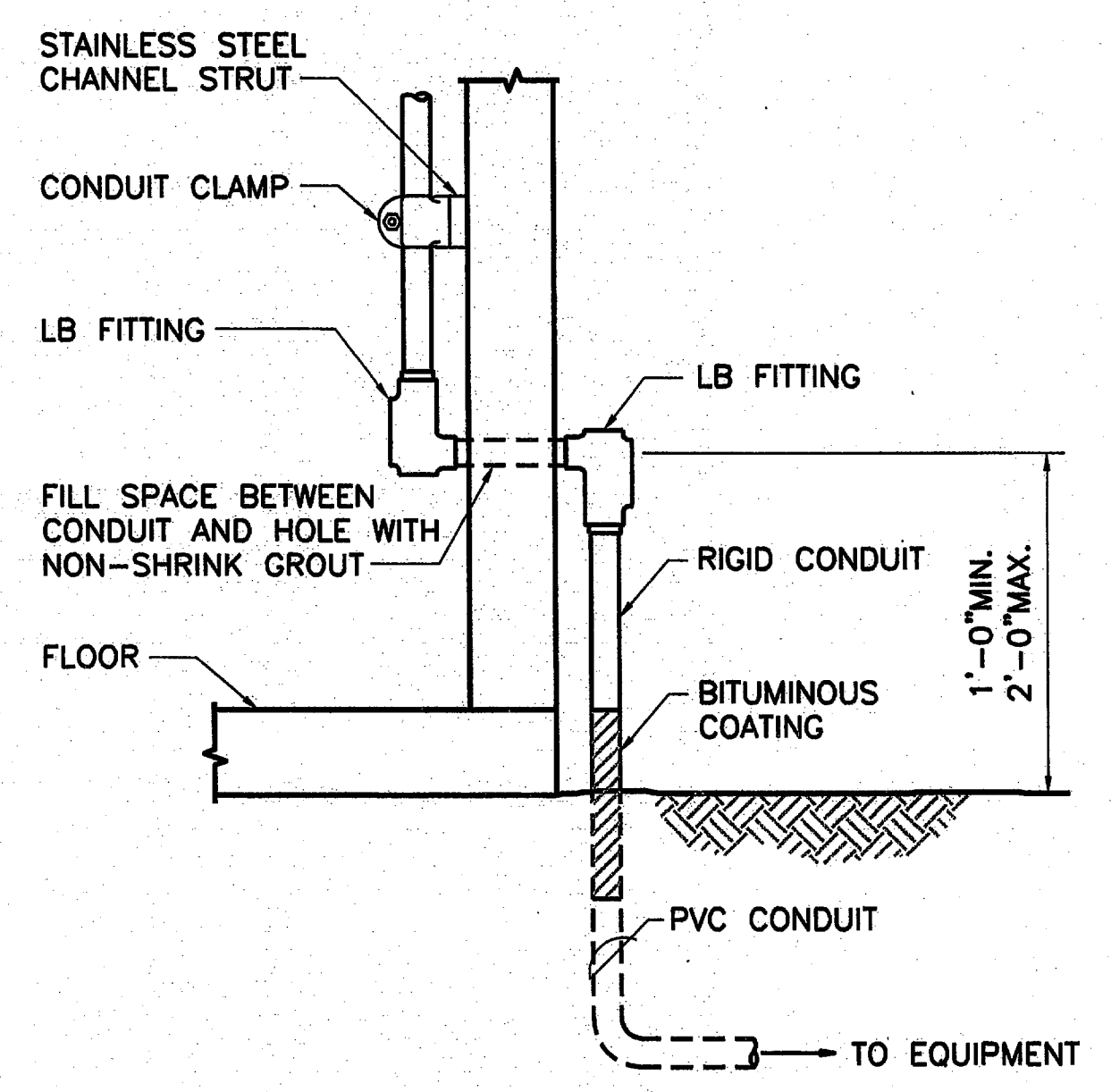
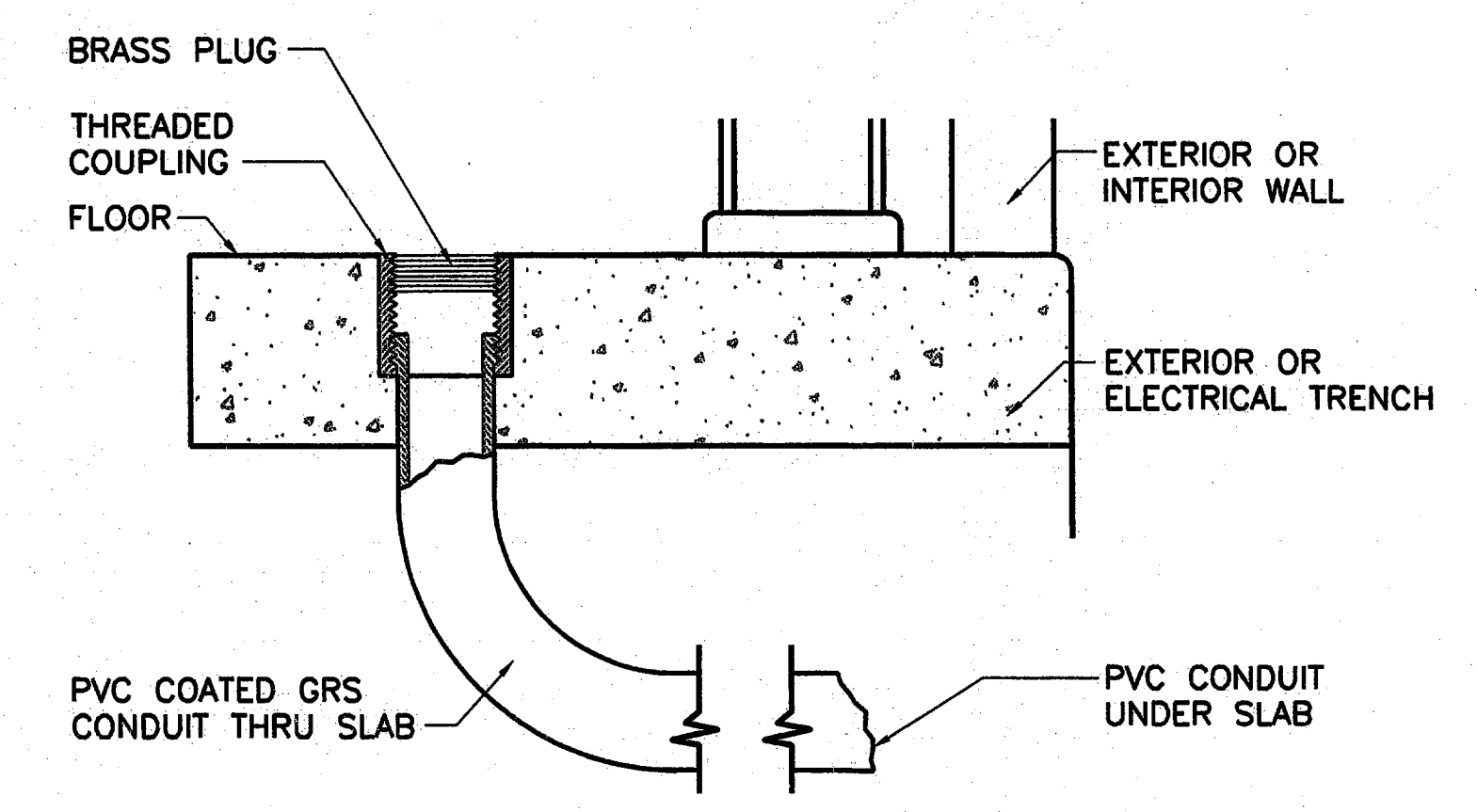


NO.1 NOTES BY SYMBOL "1"
 1. ANCHORS SHALL BE EXPANDING 316 STAINLESS STEEL.

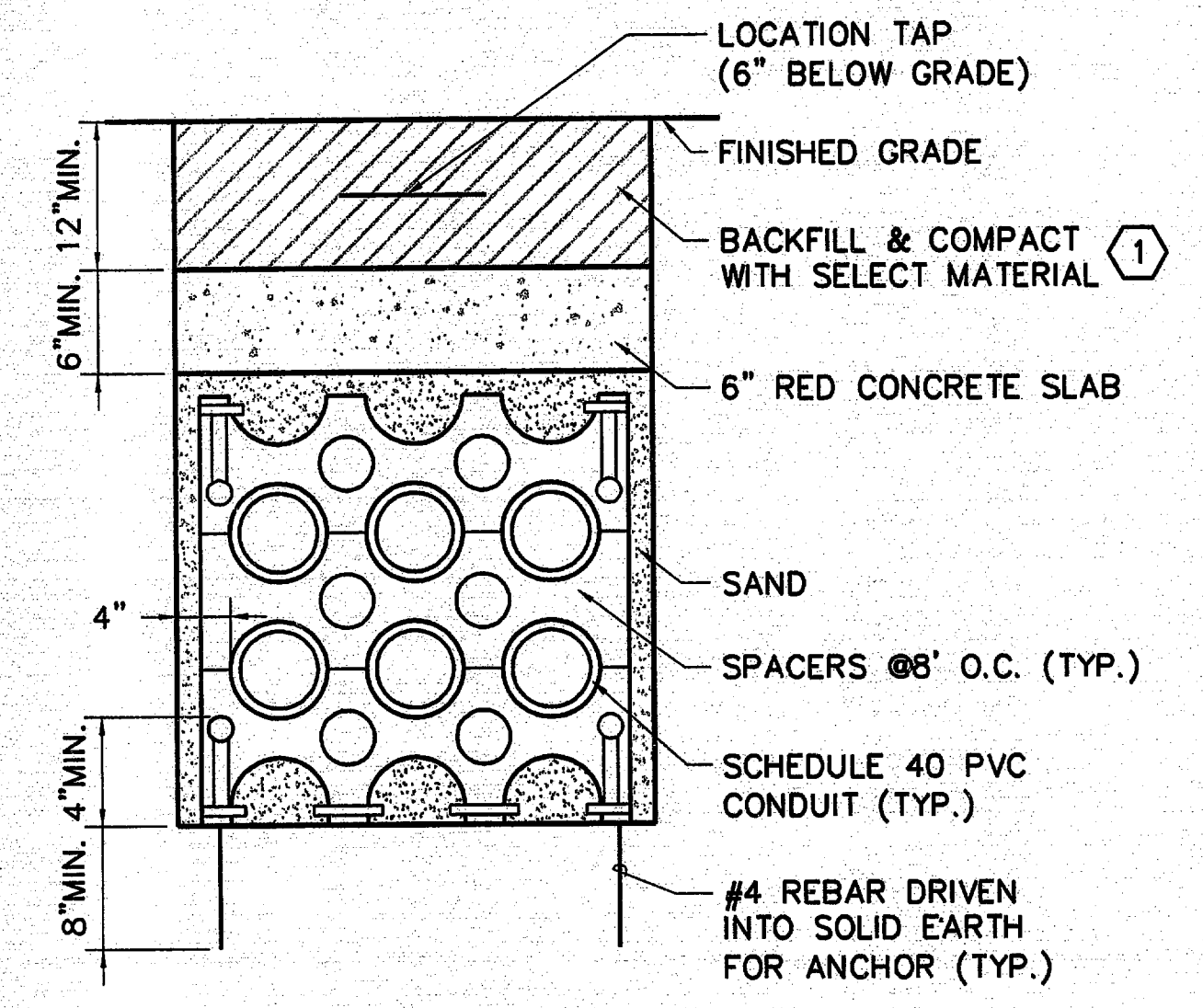
1 WALL MOUNTED CONDUIT RACK
 NOT TO SCALE



2 WALL PENETRATION
 NOT TO SCALE

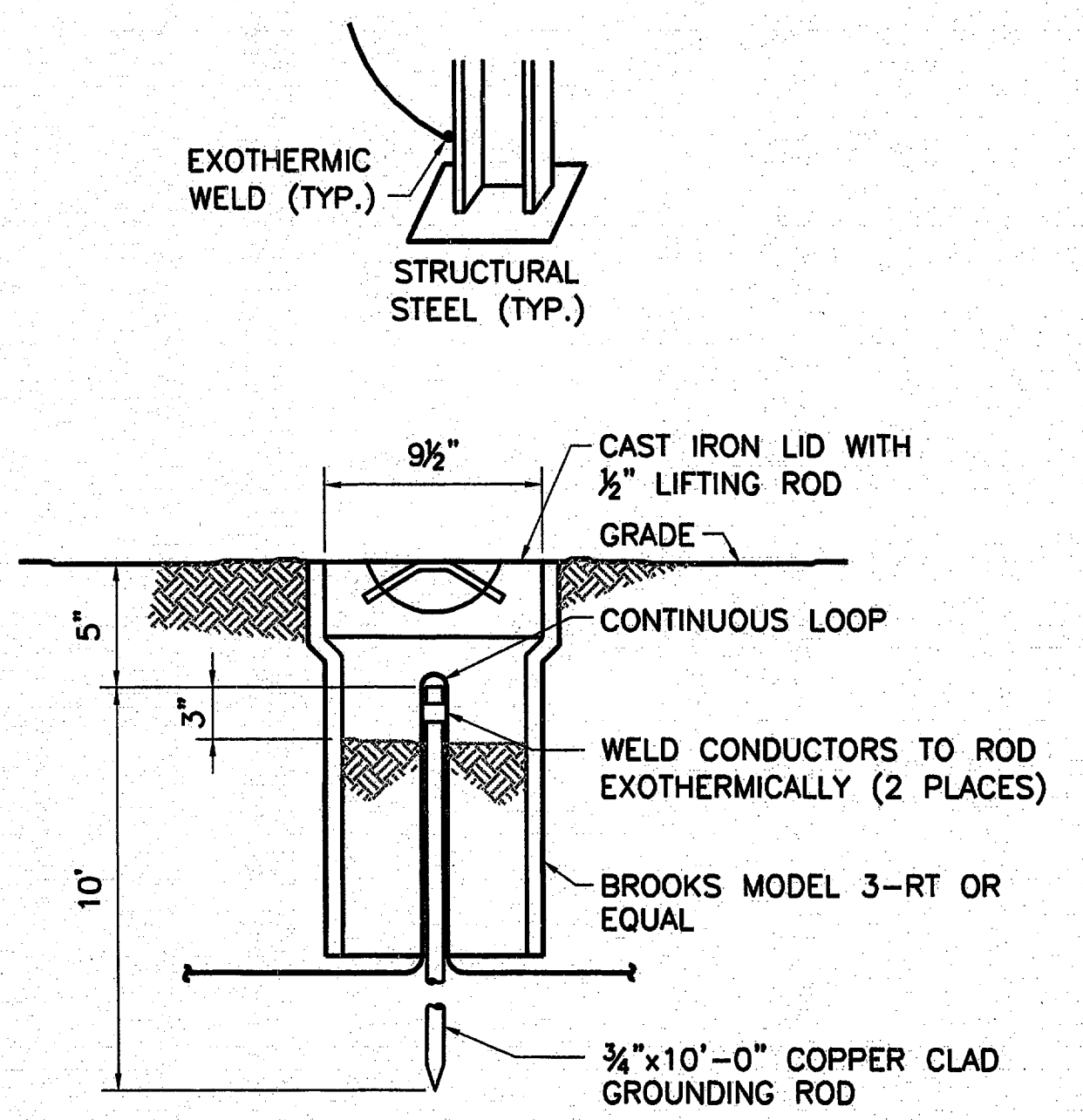


3 CONDUIT FLOOR ENTRANCE
 NOT TO SCALE

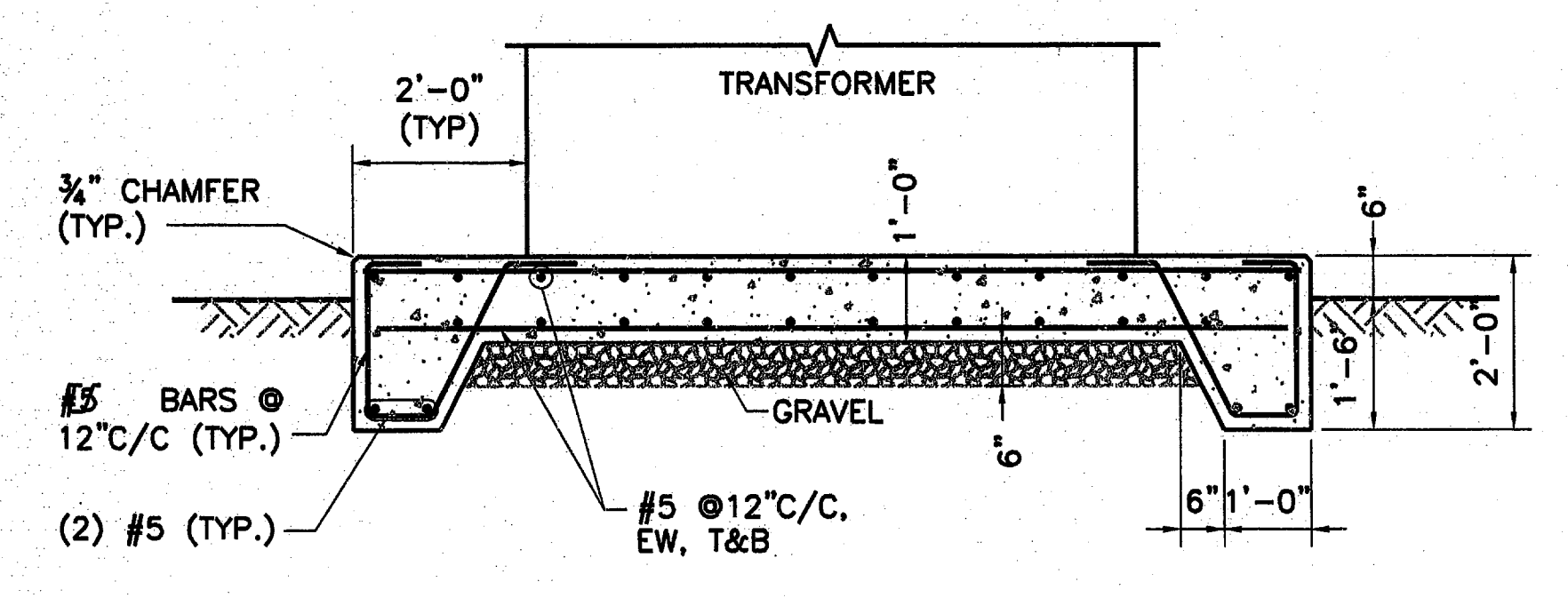


NO.4 NOTES BY SYMBOL "4"
 1. SELECT BACKFILL TO BE CLASS 4 EARTH FILL. FILL SHALL CONSIST OF MATERIALS WHICH ARE CLASSIFIED AS SP, SM, SC, CL OR DUAL CLASSIFICATIONS THEREOF, WHICH HAVE A LIQUID LIMIT LESS THAN OR EQUAL TO 35 AND A PLASTICITY INDEX OF A MINIMUM OF 4 AND A MAXIMUM OF 15, WHICH ARE FREE OF ORGANIC MATERIALS.

4 CONCRETE CAPPED DUCT BANK DETAIL
 NOT TO SCALE

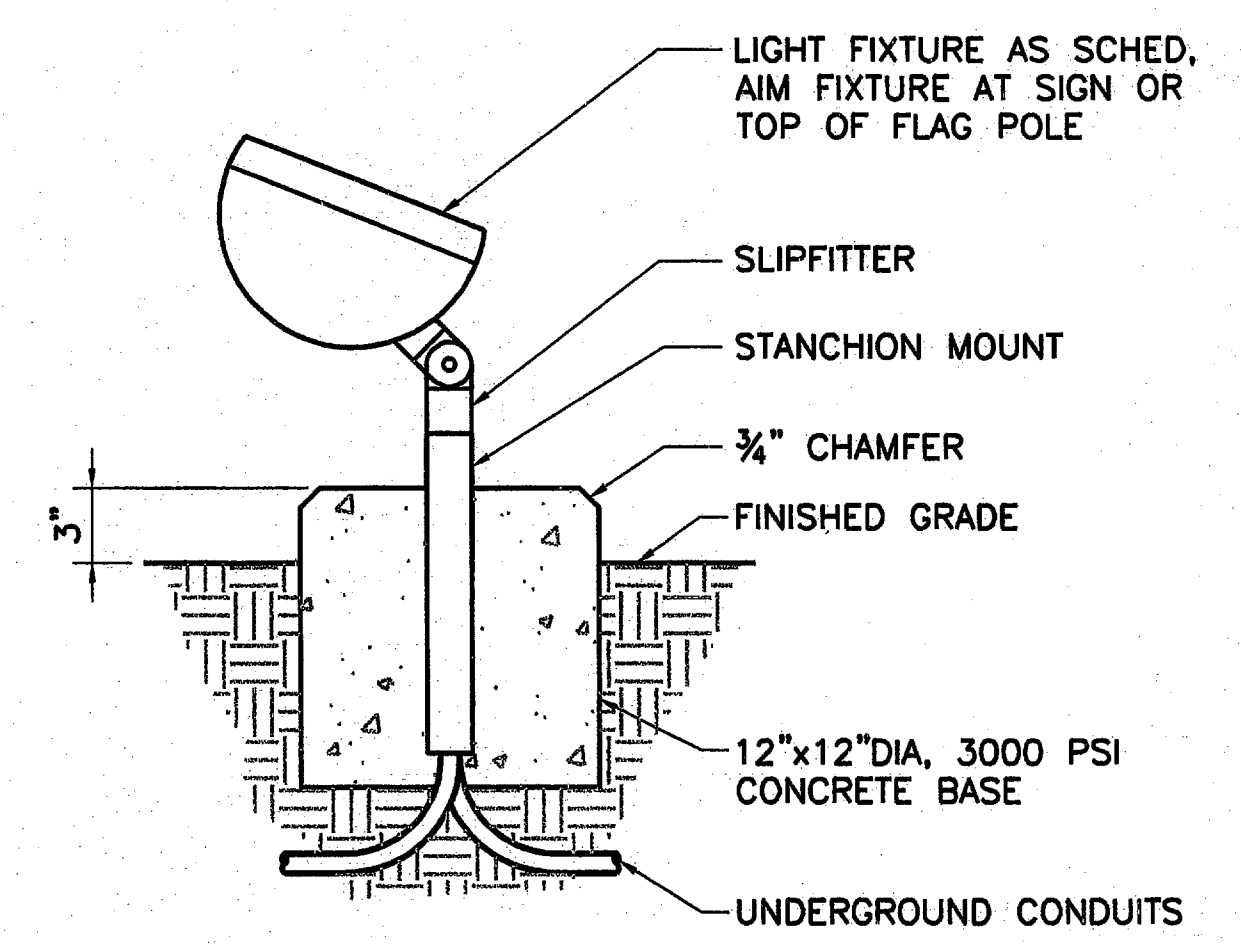


5 GROUND ROD DETAIL
 NOT TO SCALE

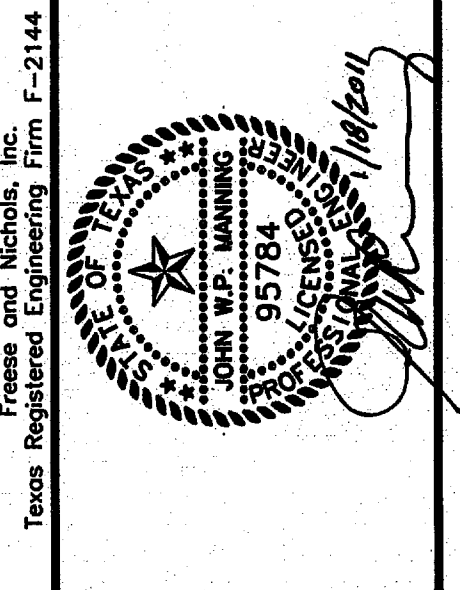


NO.7 GENERAL NOTES:
 1. CONTRACTOR SHALL VERIFY TRANSFORMER.

7 TRANSFORMER PAD
 NOT TO SCALE



8 GROUND FLOOD LIGHT
 NOT TO SCALE



FREES & NICHOLS
 2220 San Jacinto Blvd., Suite 330
 Houston, Texas 77002
 Phone: (840) 397-4800
 Fax: (840) 397-4877

TOWN OF ADDISON, TEXAS
 SURVEYOR 1.5 MG EST
 ELECTRICAL
 DETAILS

NO. ISSUE	DATE	BY	DESIGNED	DRAWN	REVISIONS	CHECKED	FILE NAME
	01/18/11		JMM	JAF		JNH	EL-ADD-DT-MISC01.dwg
VERIFY SCALE: Bar is one inch on original drawing. If not one inch on this sheet, adjust scale.							
E-8							
SHEET SEQ.							

N:\elec\EL-ADD-DT-MISC01.dwg LAYOUT: EL-ADD-DT-MISC01.dwg
 Jan 18, 2011 2:03pm
 REFERENCES: N:\elec\Bases\WWW-STAMP.dwg, N:\Standard\34BORDER.DWG, 95784.dwg