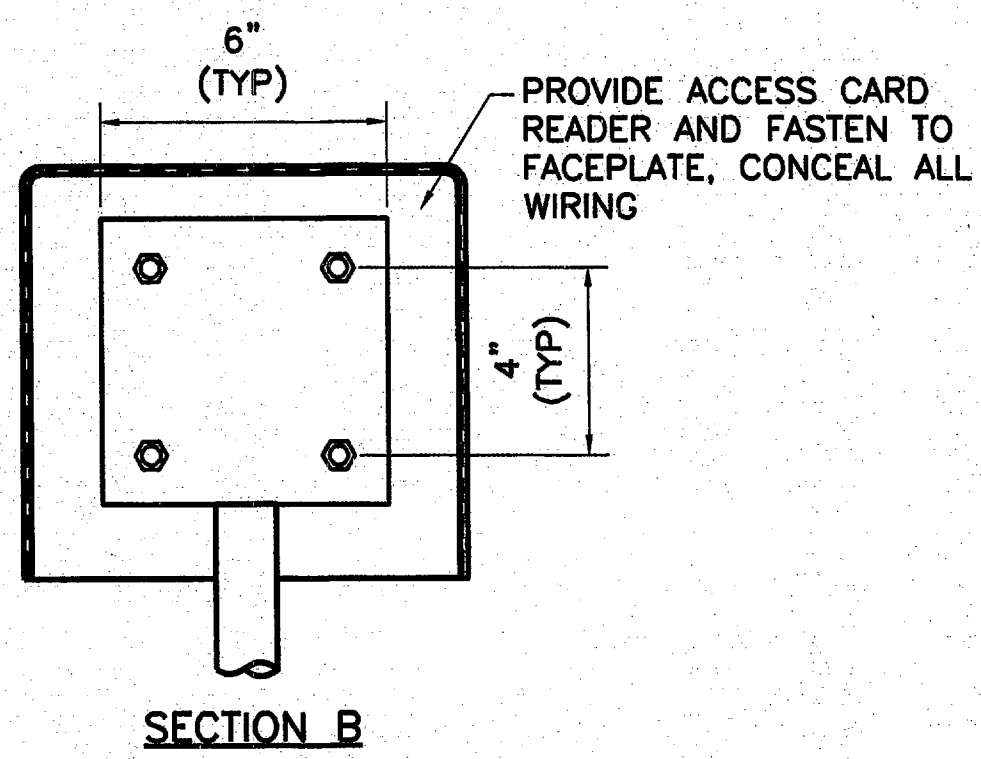


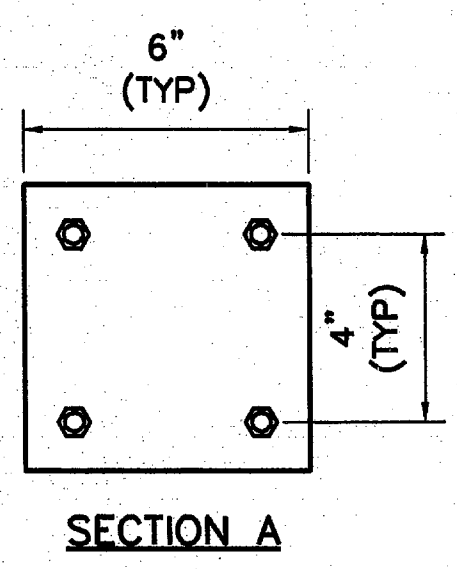
**NO.1 GENERAL NOTES:**  
 1. MOUNTING HARDWARE AND BOLTS SHALL BE STAINLESS STEEL.

**MOUNTING POST DETAIL**  
 NOT TO SCALE



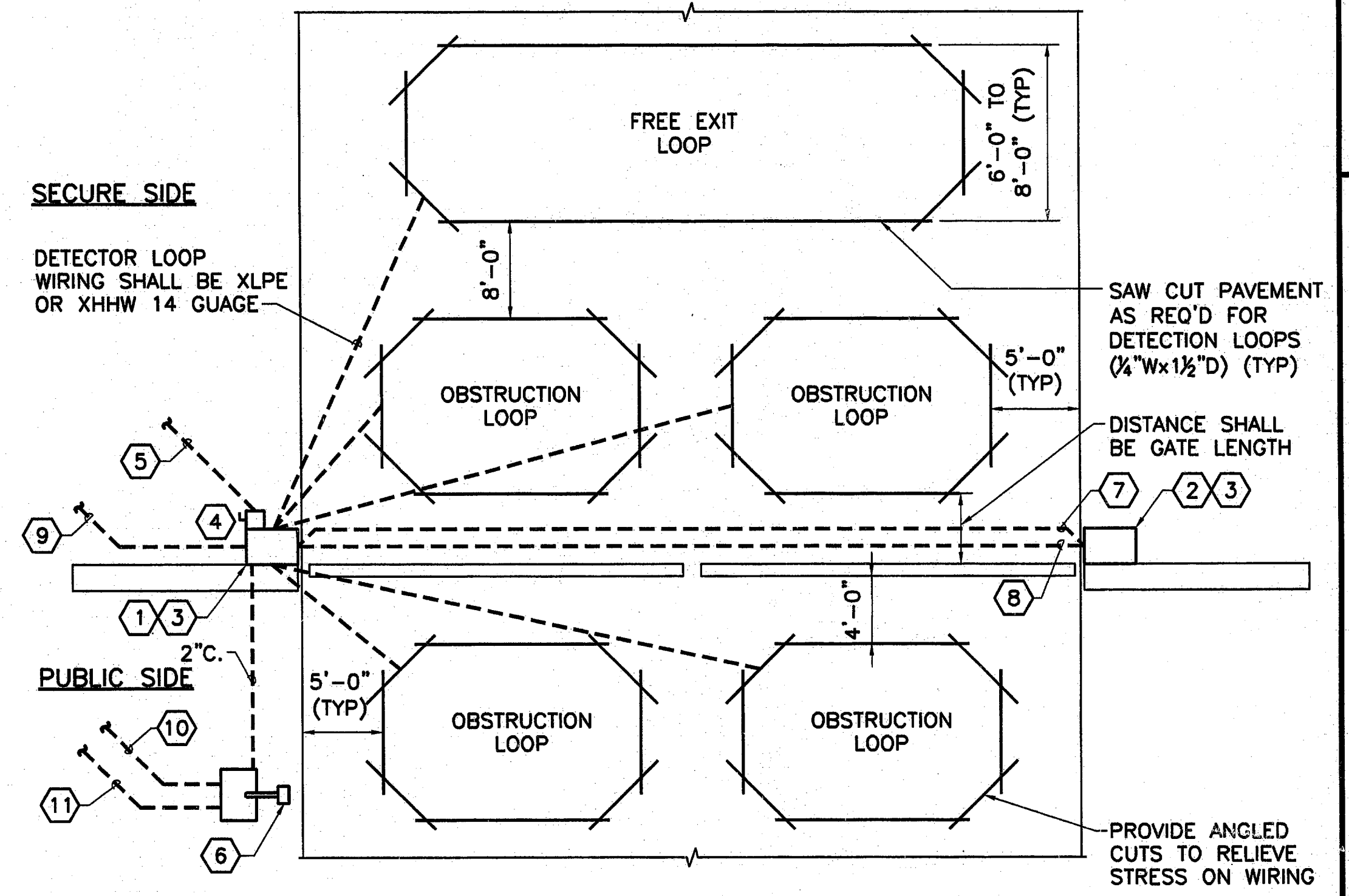
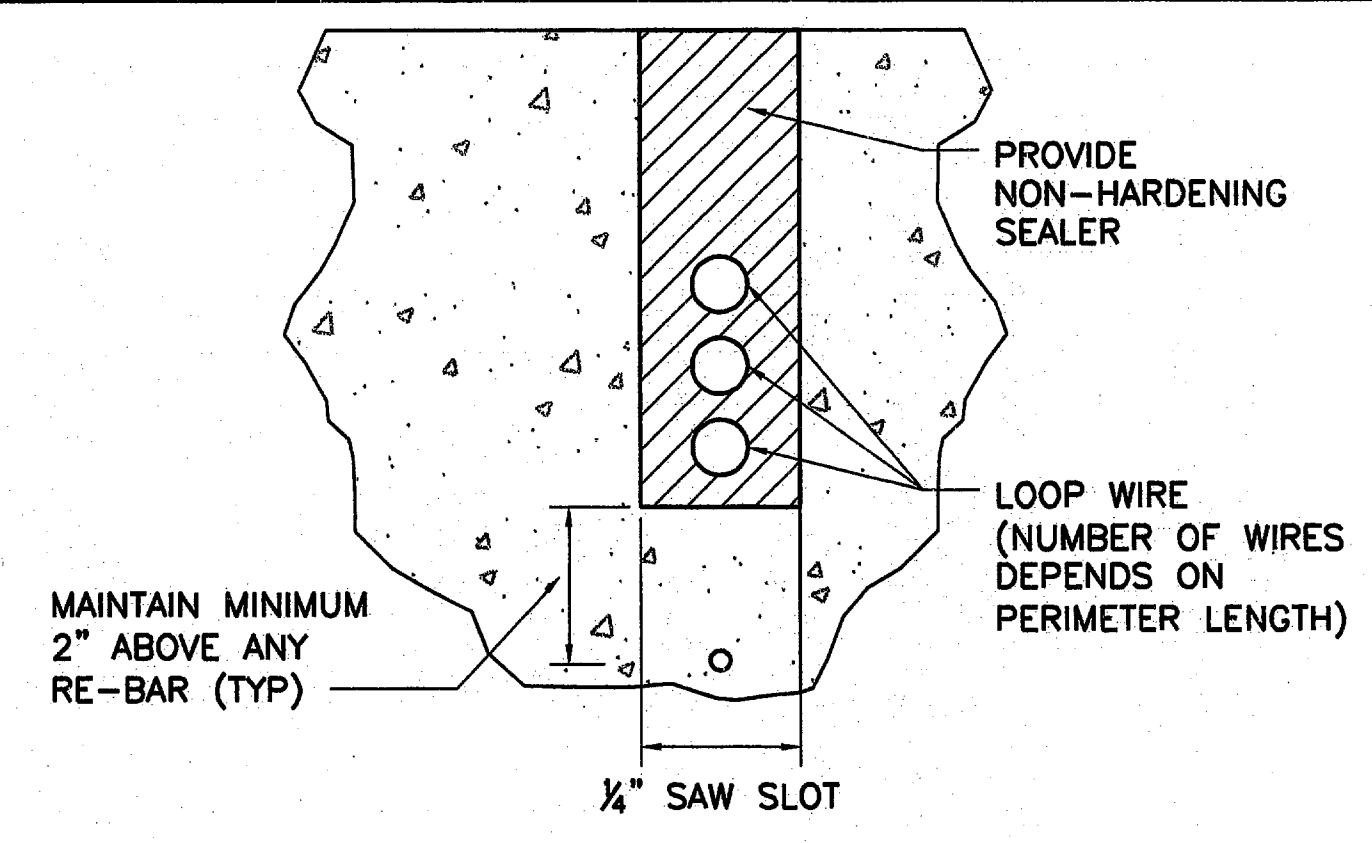
**NO.2 GENERAL NOTES:**  
 1. MOUNTING HARDWARE AND BOLTS SHALL BE STAINLESS STEEL.

**MOUNTING POST FACEPLATE DETAIL**  
 NOT TO SCALE



**NO.3 GENERAL NOTES:**  
 1. MOUNTING HARDWARE AND BOLTS SHALL BE STAINLESS STEEL.

**MOUNTING POST BASEPLATE DETAIL**  
 NOT TO SCALE

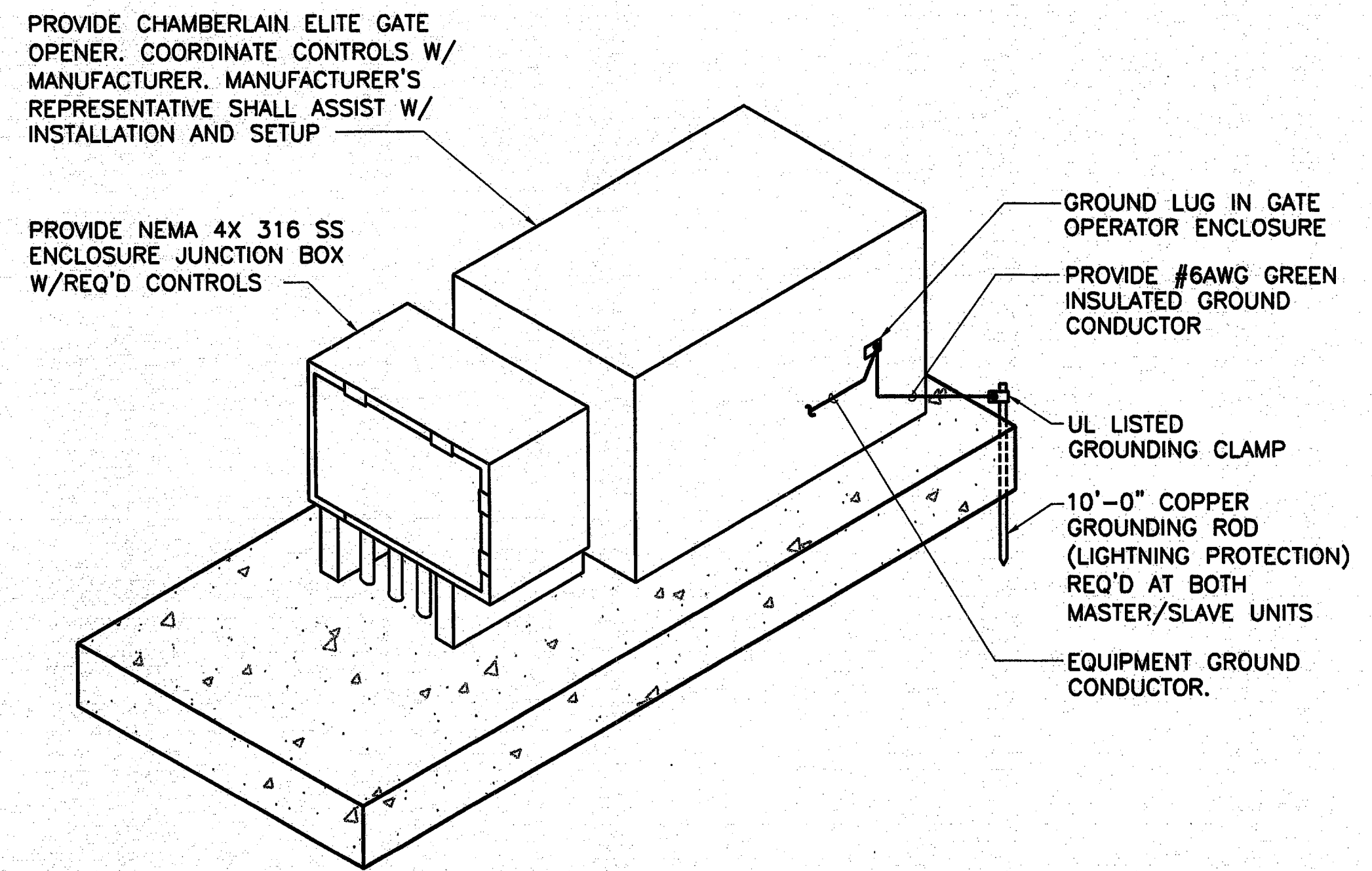


**NO.5 GENERAL NOTES:**

- DESIGN IS BASED ON A SWING GATE OPERATOR. THE SLAVE GATE OPERATOR OPERATES OFF ELECTRIC CONTROL EXTENDED FROM THE MASTER GATE OPERATOR AND THEREFORE THE POWER FEED (120V, 1Ø, 60HZ) IS REQUIRED ONLY AT THE MASTER GATE CONTROLLER.
- PROVIDE AND INSTALL CONTROL WIRING AND POWER AND CONTROL CONDUCTORS FROM MASTER GATE CONTROLLER TO SLAVE GATE OPERATOR IN ACCORDANCE WITH MANUFACTURER'S RECOMMENDATIONS.
- REFER TO CIVIL PLANS FOR SIZE/LOCATION OF GATE CONTROLLER, BOLLARDS, GATES, FENCES, ETC.
- THIS DETAIL IS SCHEMATIC IN NATURE AND IS INTENDED TO ILLUSTRATE MAJOR COMPONENTS AND WORK NECESSARY FOR SUCCESSFUL OPERATION OF THE GATE CONTROL SYSTEM. CONTRACTOR SHALL PROVIDE ALL LABOR AND MATERIALS REQUIRED FOR A COMPLETE AND OPERABLE SYSTEM.
- POLARITIES MUST BE THE SAME ON THE DETECTOR LOOPS OR THE ELECTRIC FIELDS WILL INTERFERE WITH EACH OTHER.

**NO.5 NOTES BY SYMBOL "⬡":**

- GATE OPERATOR (MASTER).
- GATE OPERATOR (SLAVE).
- PROVIDE CONCRETE BASE FOR GATE OPERATOR. LOCATE PER MANUFACTURER'S INSTALLATION INSTRUCTIONS.
- POWER FEED FOR GATE CONTROLLER. PROVIDE 30A/1P/NF DISCONNECT SWITCH IN NEMA 4X STAINLESS STEEL ENCLOSURE.
- TYPICAL POWER FEED FOR GATE CONTROLLER.
- PROVIDE ELECTRONIC GATE CONTROL CARD READER.
- PROVIDE MINIMUM 2" CONDUIT BETWEEN MASTER/SLAVE OPERATOR FOR POWER.
- PROVIDE 1" CONDUIT WITH CONTROL WIRING (3PR. #18 SHLD.) AND MAKE ALL TERMINATIONS. PROVIDE ADDITIONAL 1" SPARE CONDUIT BETWEEN OPERATORS.
- PROVIDE 1" CONDUIT FROM MASTER GATE OPERATOR TO SECURITY CONTROL PANEL.
- PROVIDE 1" CONDUIT FROM MOUNTING POST TO LOCATION IN SECURITY CONTROL PANEL AS IDENTIFIED BY OWNER. PROVIDE COMMUNICATION CABLING IN CONDUIT PER MANUFACTURER'S RECOMMENDATIONS. MAKE ALL TERMINATIONS AS REQUIRED.
- PROVIDE 120V POWER TO MOUNTING POST FOR CONTROL SYSTEM.



PROVIDE CHAMBERLAIN ELITE GATE OPENER. COORDINATE CONTROLS W/ MANUFACTURER. MANUFACTURER'S REPRESENTATIVE SHALL ASSIST W/ INSTALLATION AND SETUP

PROVIDE NEMA 4X 316 SS ENCLOSURE JUNCTION BOX W/REQ'D CONTROLS

GROUND LUG IN GATE OPERATOR ENCLOSURE  
 PROVIDE #6AWG GREEN INSULATED GROUND CONDUCTOR

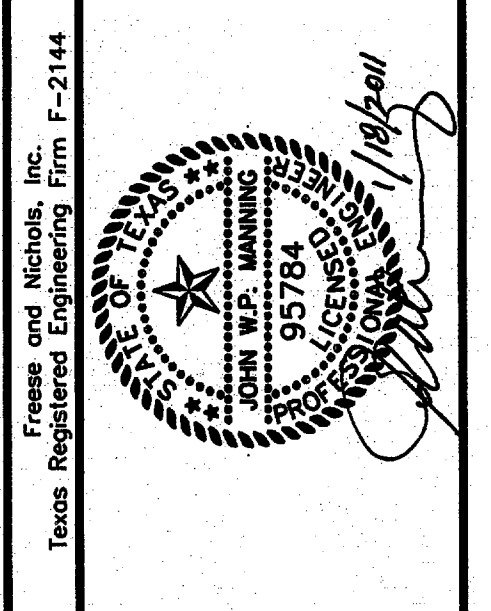
UL LISTED GROUNDING CLAMP

10'-0" COPPER GROUNDING ROD (LIGHTNING PROTECTION) REQ'D AT BOTH MASTER/SLAVE UNITS

EQUIPMENT GROUND CONDUCTOR.

**SLIDE GATE OPERATOR**  
 NOT TO SCALE

**GATE CONTROLLER DETAIL**  
 NOT TO SCALE



**FREES & NICHOLS**  
 2220 San Joaquin Blvd., Suite 330  
 Houston, Texas 77050  
 Phone - (940) 387-4600  
 Fax - (940) 387-4677

TOWN OF ADDISON, TEXAS  
 SURVEYOR 1.5 MG EST  
 ELECTRICAL  
 DETAILS

NO.	ISSUE	BY	DATE	F&N JOB NO.	ADD08459
			01/18/11	DATE	
				DESIGNED	JWM
				DRAWN	JAF
				CHECKED	JNH
				FILE NAME	EL-ADD-DT-MISC03.dwg

Bar is one inch on original  
 this sheet, adjust scale.

VERIFY SCALE

SHEET  
 E-10

SEQ.

N:\elec\EL-ADD-DT-MISC03.dwg LAYOUT: EL-AUD-DT-MISC03  
 Jan 18, 2011 - 2:04pm LTS: 1 PLS: 1 TWST:  
 REFERENCES: N:\elec\Bose\JWM-STAMP.dwg, N:\Standard\34BORDER.DWG, 95784.dwg