

**LEGEND**

- ⊙ EXISTING POWER POLE
- ⊙ EXISTING WATER VALVE
- ⊙ EXISTING FIRE HYDRANT
- ⊙ EXISTING LIGHT POLE
- 8" W EXISTING WATERLINE
- 8" WW EXISTING WASTEWATER LINE
- 7 EXISTING UNDERGROUND TELEPHONE LINE
- 4" G EXISTING GAS MAIN
- LOT LINE

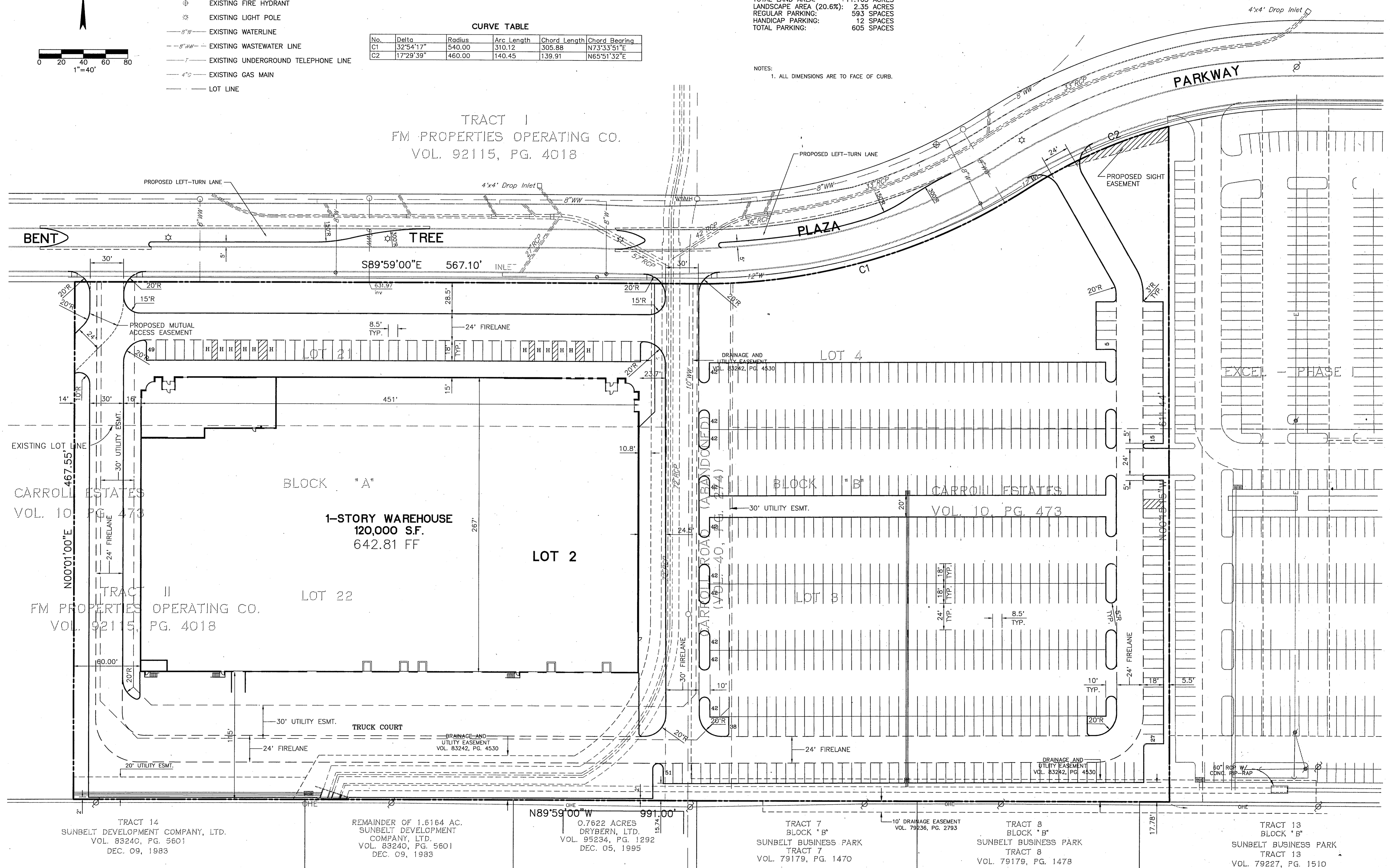
**CURVE TABLE**

No.	Delta	Radius	Arc Length	Chord Length	Chord Bearing
C1	32°54'17"	540.00	310.12	305.88	N73°33'51"E
C2	17°29'39"	460.00	140.45	139.91	N65°51'32"E

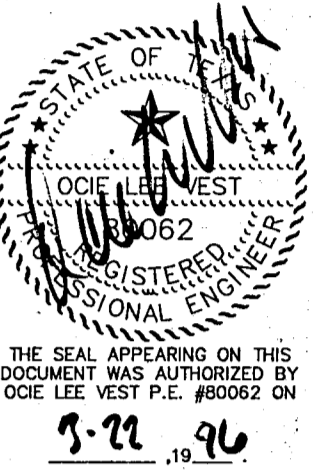
**LOT 2  
SITE AREA SUMMARY**

TOTAL LAND AREA: 11.163 ACRES  
 LANDSCAPE AREA (20.6%): 2.35 ACRES  
 REGULAR PARKING: 593 SPACES  
 HANDICAP PARKING: 12 SPACES  
 TOTAL PARKING: 605 SPACES

NOTES:  
1. ALL DIMENSIONS ARE TO FACE OF CURB.



**Bury + Pittman**  
 Consulting Engineers and Surveyors  
 Dallas, Texas Tel 214/991-0011 Fax 214/991-0278  
 © Copyright 1995 Bury & Pittman-D.F.W., Inc.



**SITE PLAN**

**EXCEL TELECOMMUNICATIONS  
 WAREHOUSE  
 A DEVELOPMENT OF  
 WILCOX/CMC ADDISON, INC.**

Scale: 1" = 40' Date: 03/22/96  
 Taped: Drawn by: C.D.R.  
 Xref: 02702EBA, 02702PBA  
 File: 02702EBA.DWG  
 Approved by: O.L.V.  
 Project No.: 3027-02

SHEET  
**4**  
OF 10

C:\3027-02\02702EBA - Mod Mar 25 12:03:53 1996