

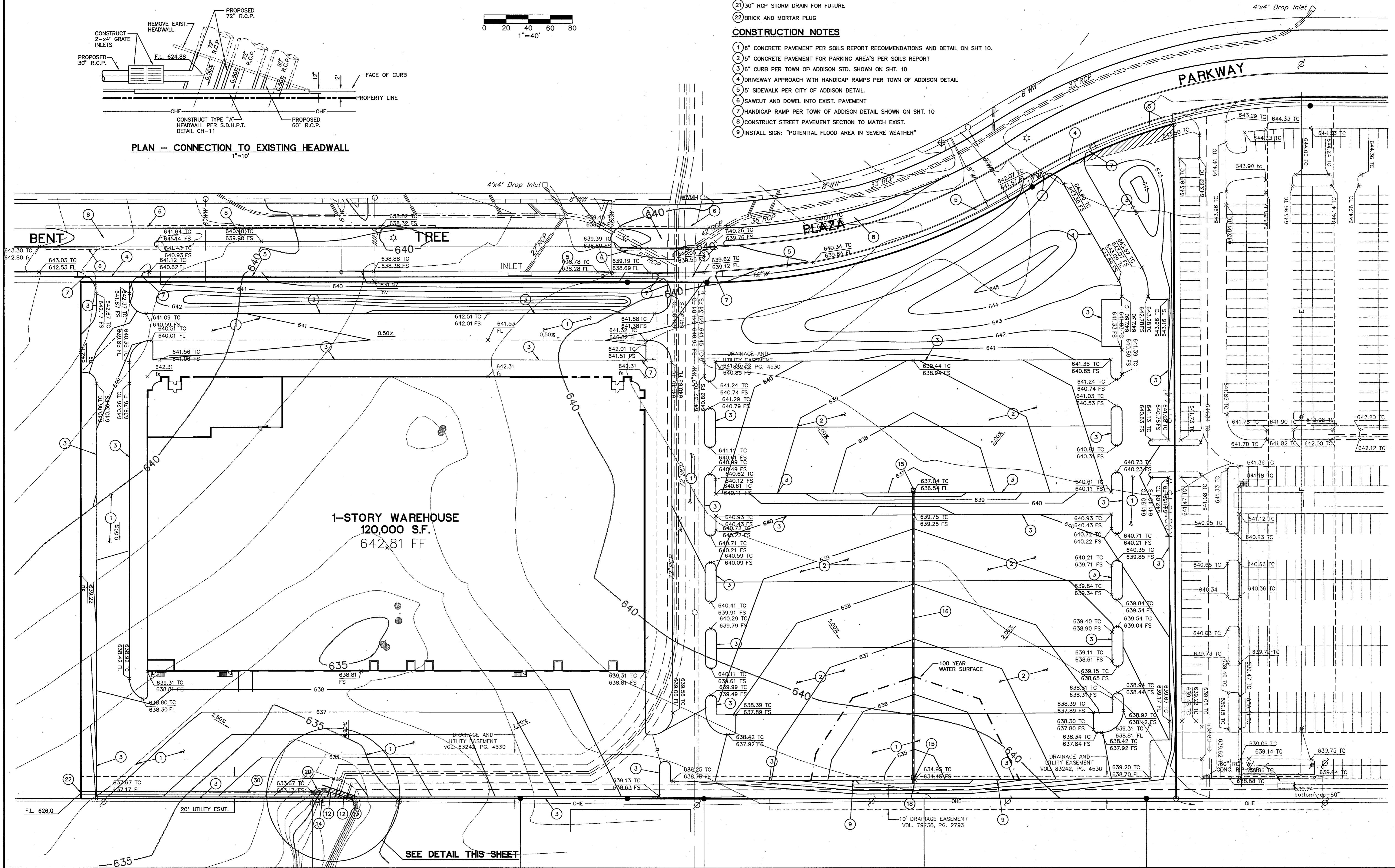
**STORM DRAIN CONSTRUCTION NOTES**

- (12) 72" RCP STORM DRAIN
- (13) 60" RCP STORM DRAIN
- (14) CONSTRUCT TYPE "A" HEADWALL PER DETAIL
- (15) 3'x3' GRATE INLET PER SHT. 12 OR APPROVED EQUAL
- (16) 24" RCP STORM DRAIN
- (17) 42" RCP STORM DRAIN
- (18) JOIN EXIST 60" RCP
- (19) TYPE "A" HEADWALL PER DETAIL, SHT. 10
- (20) 2'-4"x4" GRATE INLETS PER DETAIL, SHT. 10 OR APPROVED EQUAL
- (21) 30" RCP STORM DRAIN FOR FUTURE
- (22) BRICK AND MORTAR PLUG

**CONSTRUCTION NOTES**

- (1) 6" CONCRETE PAVEMENT PER SOILS REPORT RECOMMENDATIONS AND DETAIL ON SHT. 10.
- (2) 5" CONCRETE PAVEMENT FOR PARKING AREA'S PER SOILS REPORT
- (3) 6" CURB PER TOWN OF ADDISON STD. SHOWN ON SHT. 10
- (4) DRIVEWAY APPROACH WITH HANDICAP RAMPS PER TOWN OF ADDISON DETAIL
- (5) 5' SIDEWALK PER CITY OF ADDISON DETAIL.
- (6) SAWCUT AND DOWEL INTO EXIST. PAVEMENT
- (7) HANDICAP RAMP PER TOWN OF ADDISON DETAIL SHOWN ON SHT. 10
- (8) CONSTRUCT STREET PAVEMENT SECTION TO MATCH EXIST.
- (9) INSTALL SIGN: "POTENTIAL FLOOD AREA IN SEVERE WEATHER"

NOTE:  
THE EARTHWORK QUANTITIES FOR THIS SITE ARE INTENDED TO BALANCE PER CUT AND FILL QUANTITIES PROVIDED FROM BOB MOORE CONSTRUCTION ON 21 FEB. 1996. CONTRACTOR IS TO NOTIFY ENGINEER PRIOR TO THE START OF CONSTRUCTION IF HE DOES NOT DETERMINE THIS TO BE A BALANCE SITE. A BALANCE SITE INCLUDES THE USE OF STOCKPILED MATERIAL ONSITE.



**Bury + Pittman**  
Consulting Engineers and Surveyors  
Dallas, Texas Tel: 214/961-0011 Fax: 214/961-0076  
© Copyright 1995 Bury + Pittman-D.F.W., Inc.

**GRADING PLAN**

**EXCEL COMMUNICATIONS WAREHOUSE**  
A DEVELOPMENT OF  
**WILCOX/CMC ADDISON, INC.**

Scale: 1" = 40' Date: 03/22/96  
Tape: Drawn by: P.M.L.  
Xref: 027020RA, 027020BA, 027020TA  
File: 027020RA.dwg  
Approved by: D.L.V.  
Project No.: 3027-02

C:\3027-02\027020RA Mon Mar 25 11:44:11 1996