

CONSTRUCTION NOTES:

WATER

- 1 6" FIRE HYDRANT ASSEMBLY WITH 6" GATE VALVE
- 2 12"x8" TAPPING SLEEVE
- 3 8" 45° ELL WITH THRUST BLOCK PER DETAIL ON SHT. 9
- 4 4" WATER SERVICE ASSEMBLY PER CITY STD SHOWN ON SHT. 9
- 5 8" FIRE SERVICE ASSEMBLY WITH DOUBLE DETECTOR CHECK CHECK BACKFLOW PREVENTER (IN VAULT W/ BY-PASS METER) PER CITY STANDARDS
- 6 8" GATE VALVE AND VALVE BOX PER DETAIL ON SHT. 9
- 7 8" PVC WATER MAIN
- 8 2" IRRIGATION WATER SERVICE PER CITY STANDARD
- 9 *w/ backflow prevention assembly*
- 10 6" PVC SEWER MAIN
- 11 DOUBLE 6" SANITARY SEWER CLEANOUT PER DETAIL ON SHT. 11
- 12 6" SANITARY SEWER CLEANOUT PER DETAIL ON SHT. 11
- 13 ADJUST EXIST. MANHOLE RIM TO GRADE

SEWER

CONDUIT

- 21 2- 4" PVC CONDUITS FOR COMMUNICATIONS
- 22 2' PULL BOX
- 23 RELOCATE EXIST. LIGHT POLE
- 24 IRRIGATION SLEEVE (SEE IRRIGATION PLAN FOR SIZE AND EXACT LOCATION)
- 25 SLEEVE FOR PARKING LIGHTING (SEE M.E.P. PLANS FOR SIZE AND EXACT LOCATION)
- 26 TELEPHONE CONDUIT
- 27 ELECTRICAL CONDUIT

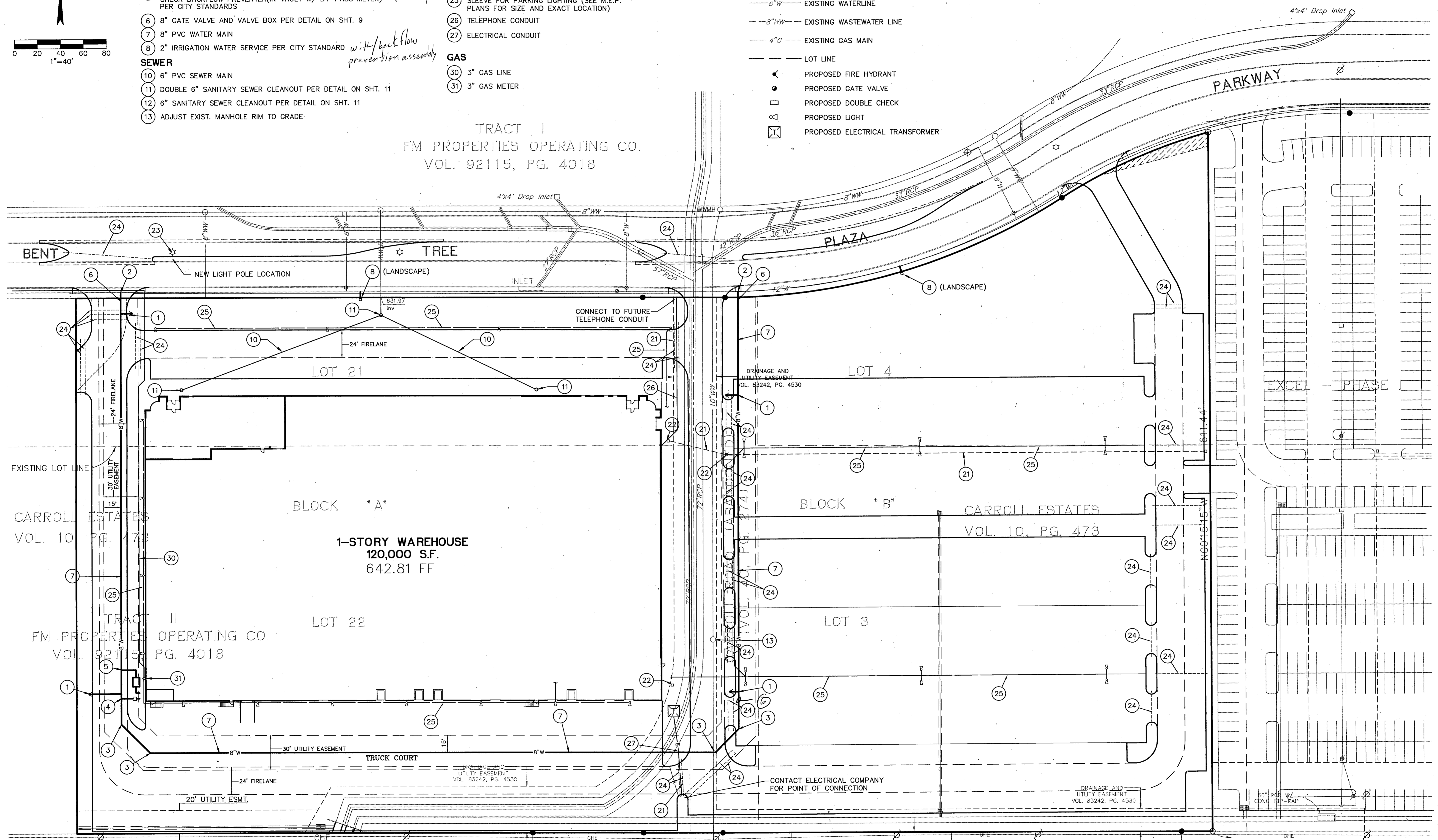
GAS

- 30 3" GAS LINE
- 31 3" GAS METER

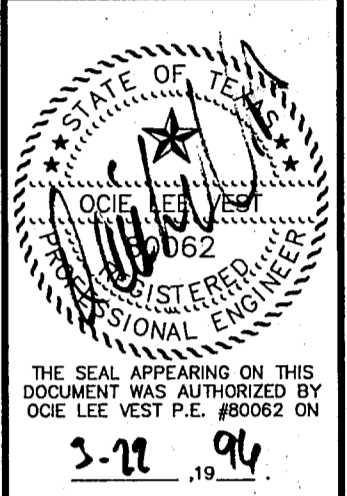
LEGEND

- ⊕ EXISTING FIRE HYDRANT
- EXISTING WATER VALVE
- ⊕ EXISTING FIRE HYDRANT
- ☆ EXISTING LIGHT POLE
- 8"W — EXISTING WATERLINE
- 8"WW — EXISTING WASTEWATER LINE
- 4"G — EXISTING GAS MAIN
- — LOT LINE
- ▲ PROPOSED FIRE HYDRANT
- PROPOSED GATE VALVE
- PROPOSED DOUBLE CHECK
- △ PROPOSED LIGHT
- ⊠ PROPOSED ELECTRICAL TRANSFORMER

TRACT I
FM PROPERTIES OPERATING CO.
VOL. 92115, PG. 4018



P Bury + Pittman
Consulting Engineers and Surveyors
Dallas, Texas Tel 214/991-0011 Fax 214/991-0276
© Copyright 1996 Bury + Pittman-D.P.F., Inc.



UTILITY PLAN

**EXCEL TELECOMMUNICATIONS
WAREHOUSE
A DEVELOPMENT OF
WILCOX/CMC ADDISON, INC.**

Scale: 1" = 40' Date: 03/22/96
Tape: Drawn by: C.D.R.
Xref: 02702EBA.02702PBA
File: 02702UTA.DWG
Approved by: O.L.V.
Project No.: 3027-02

C:\3027-02\02702UTA Mon Mar 25 12:19:57 1996