

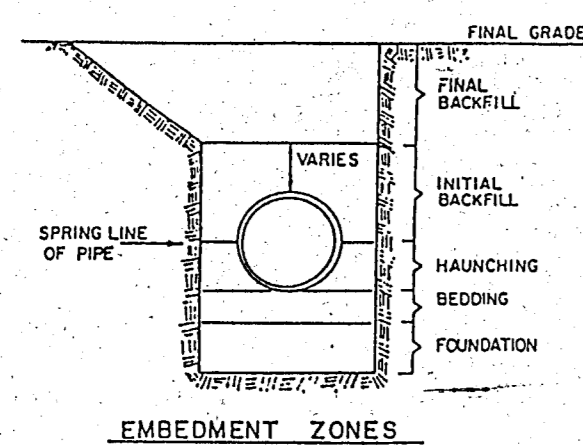
EMBEDMENT DETAILS FOR SANITARY SEWER

TABLE OF QUANTITIES OF 2000 PSI CONCRETE, GRAVEL OR CRUSHED STONE IN CUBIC YARDS PER 100 LINEAR FEET FOR EACH CLASS EMBEDMENT

SIZE OF PIPE IN INCHES I.D.	O.D. OF PIPE IN INCHES	TRENCH WIDTH IN INCHES	TRENCH WIDTH IN FEET	CLASS 1 EMBEDMENT CRUSHED STONE	CLASS 2 EMBEDMENT CRUSHED STONE	CLASS 3 EMBEDMENT CONCRETE	CONCRETE ENCASUREMENT
12	16.00	32	2.67	4.1	6.5	4.8	15.8
15	19.50	36	3.00	4.8	7.8	6.4	19.2
18	23.00	39	3.25	5.7	9.2	8.2	21.2
21	26.50	43	3.58	6.9	11.0	10.2	24.9
24	30.00	46	3.83	8.3	13.1	12.4	28.7
27	33.50	51	4.25	10.3	16.1	14.4	32.8
30	37.00	57	4.75	12.7	20.1	17.0	34.8
33	40.50	62	5.17	15.1	23.8	19.3	39.2
36	44.00	67	5.58	18.0	28.6	22.1	43.8

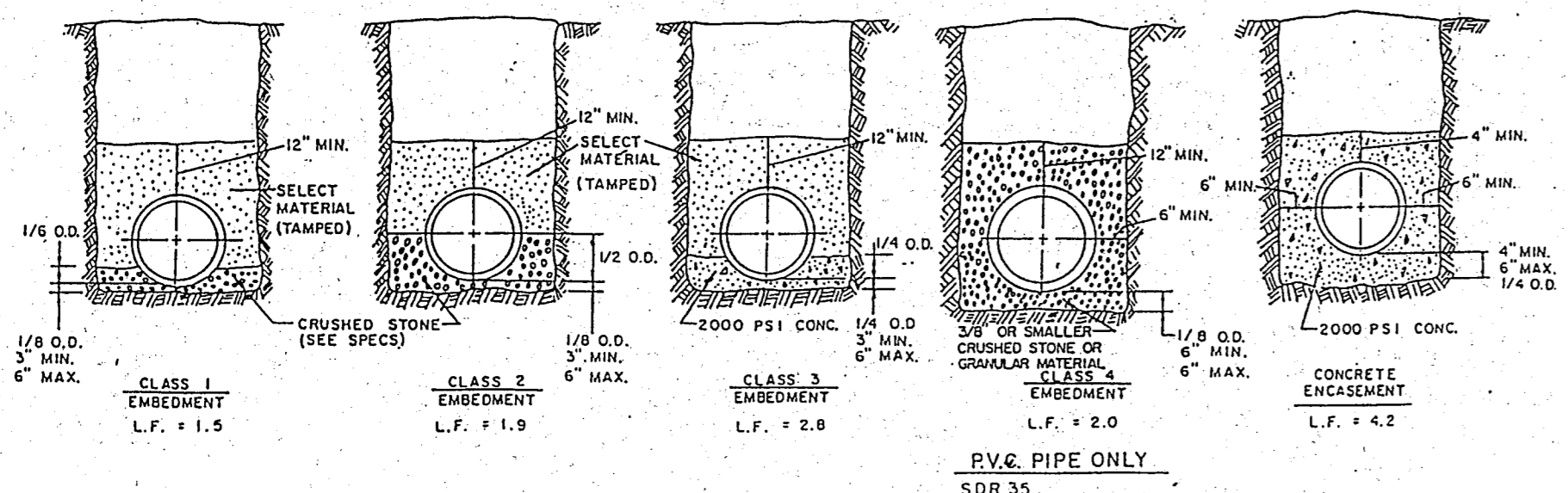
TABLE OF QUANTITIES PER 100 LINEAR FEET-PVC PIPE (IN CUBIC YARDS)

SIZE OF PIPE IN INCHES	O.D. OF PIPE IN INCHES	TRENCH WIDTH IN INCHES	TRENCH WIDTH IN FEET	CLASS 4 EMBEDMENT CRUSHED STONE	CONCRETE ENCASUREMENT
6	6.28	24	2.00	8.0	10.7
8	8.16	24	2.00	8.7	12.4
10	10.20	26	2.18	10.2	14.2
12	12.24	28	2.33	11.7	15.9
16	15.30	31	2.61	14.0	18.8
24		36	3.0		
30		42	3.5		

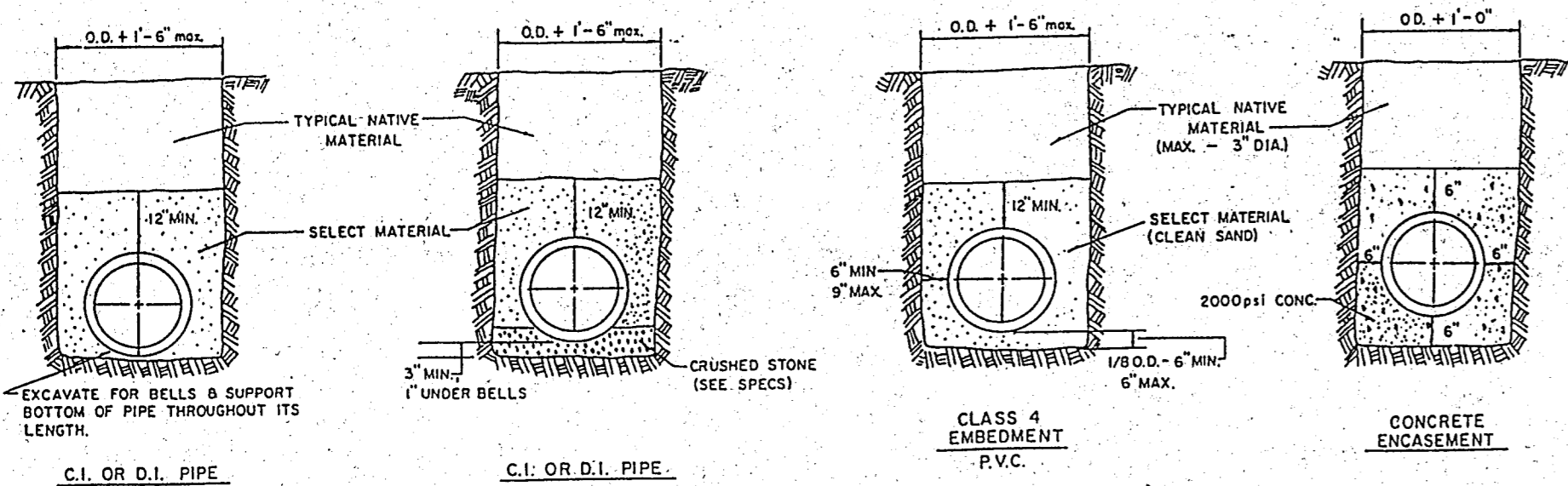


SANITARY SEWER

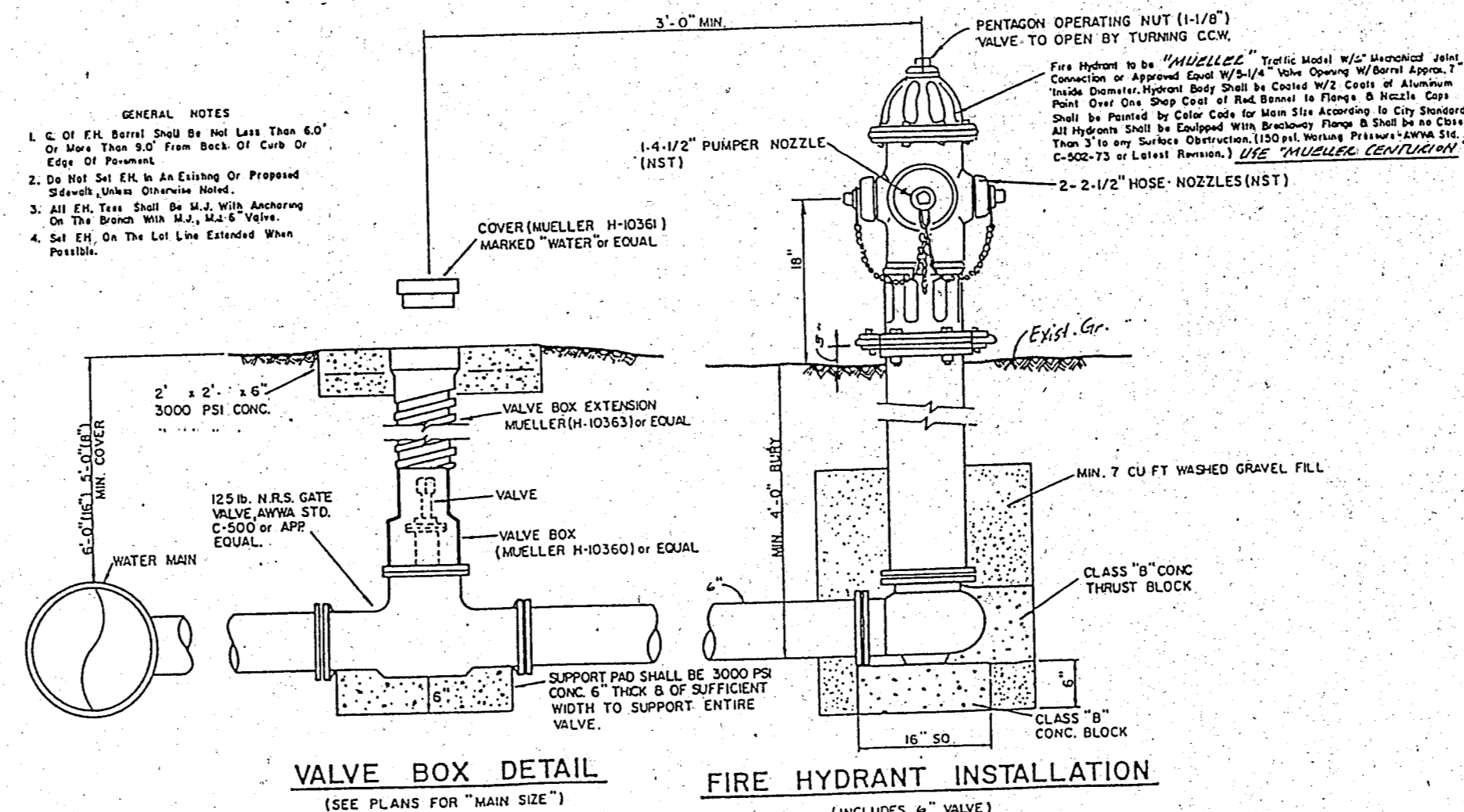
TYPICAL NATIVE MATERIAL COMPACTED TO: 95% OPTIMUM MOISTURE 0 TO +3% UNDER PAVEMENT 100% OPTIMUM MOISTURE 0 TO +5% OUTSIDE CURB LINES JETTING IS NOT ALLOWED BACKFILL TO BE COMPACTED IN 6" LIFTS TYPICAL NATIVE MATERIAL (MAX. 3" DIA.)



P.V.C. PIPE ONLY
SDR 35



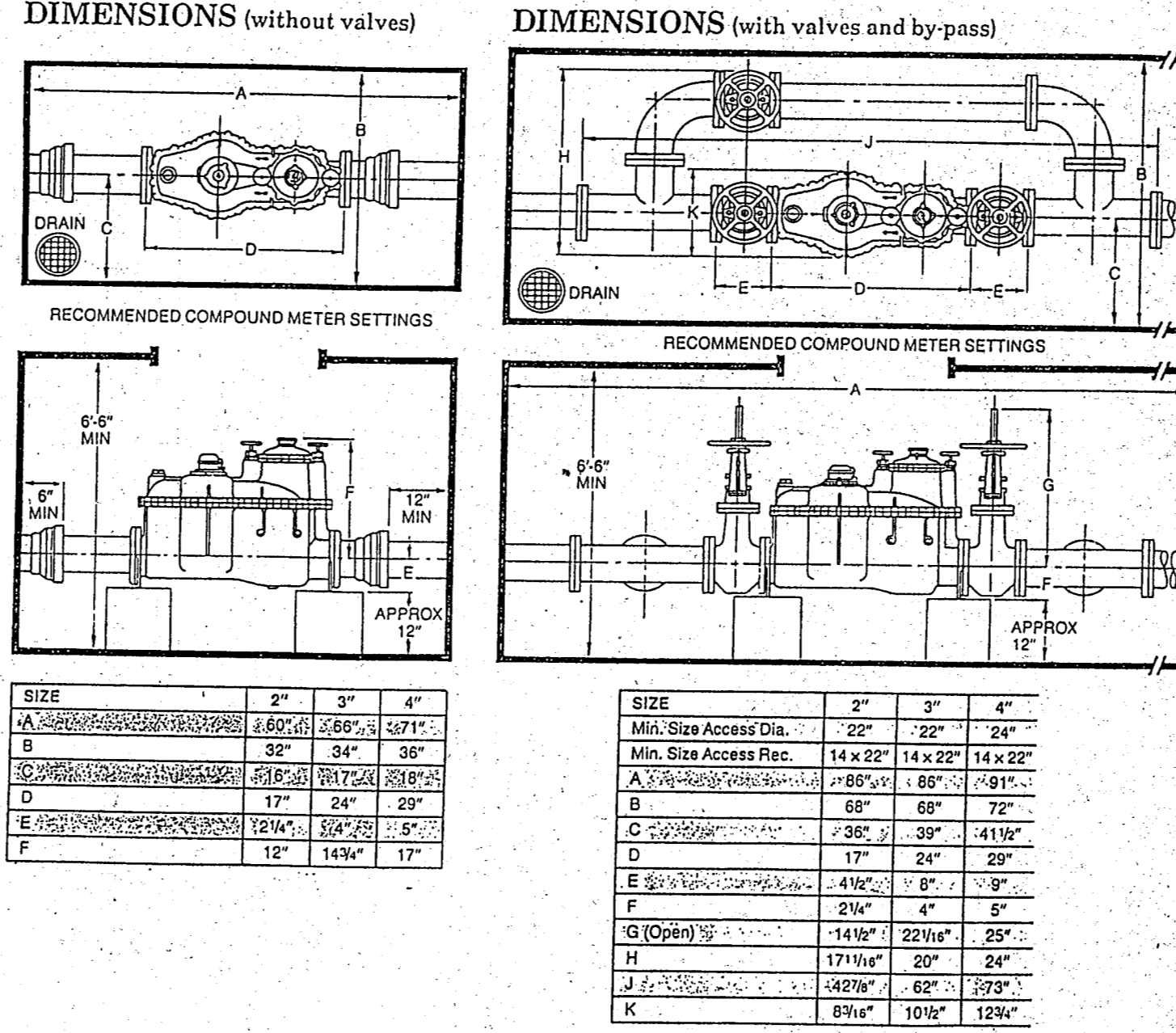
EMBEDMENT DETAILS FOR WATER MAIN



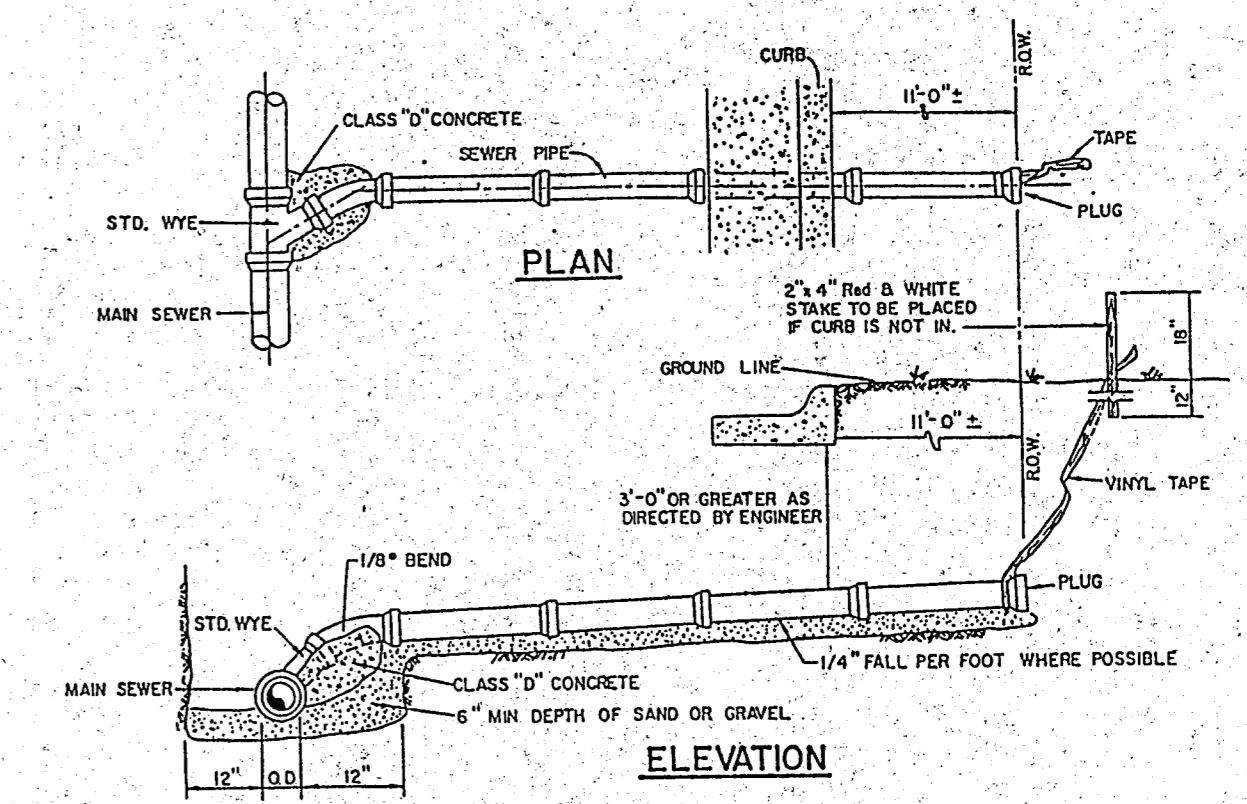
VALVE BOX DETAIL
(SEE PLANS FOR "MAIN SIZE")

FIRE HYDRANT INSTALLATION
(INCLUDES 1/2" VALVE)
No Scale

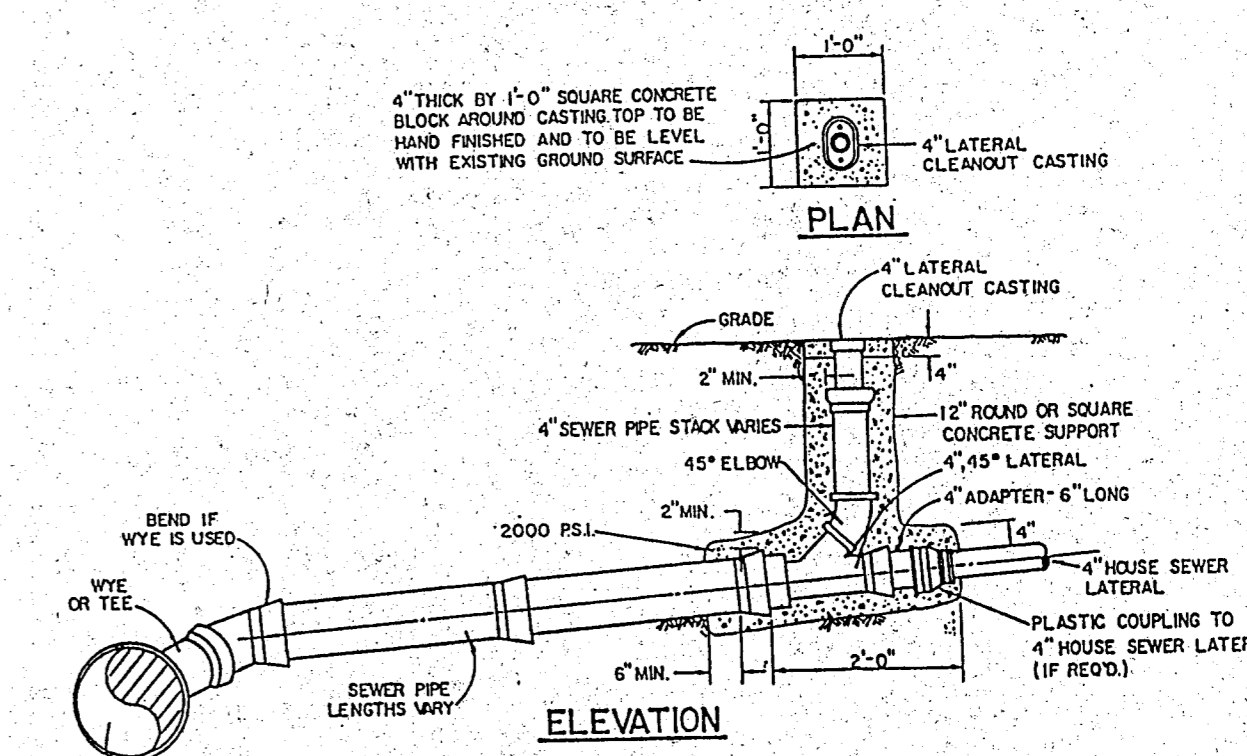
COMPOUND METER WATER SERVICE 2", 3" & 4"



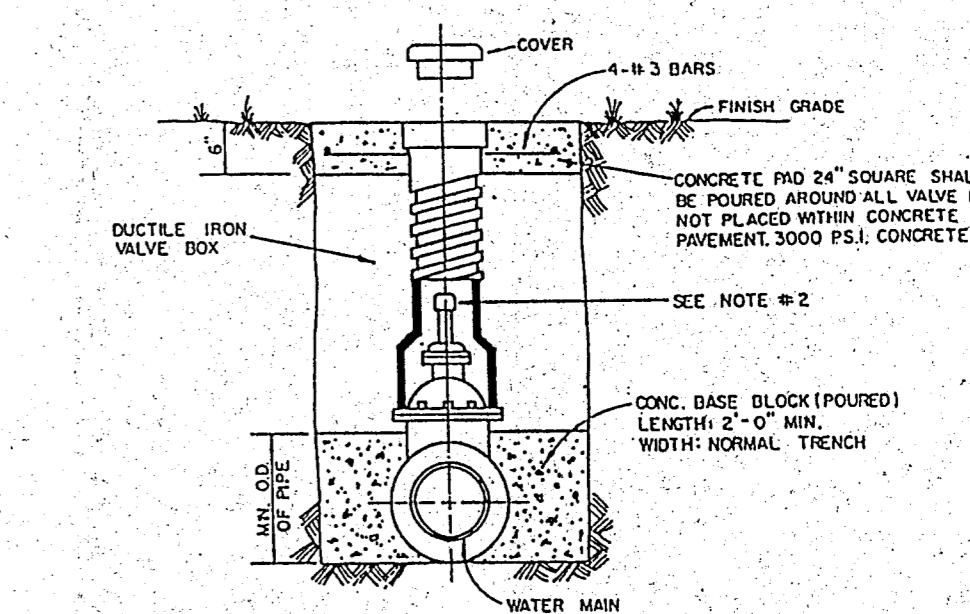
SIZE	2"	3"	4"
A	1.60'	1.60'	1.67'
B	32"	34"	36"
C	17"	24"	29"
D	12 1/4"	14 1/4"	17"
E	12 1/4"	14 1/4"	17"
F	12"	14 1/4"	17"



SANITARY SEWER SERVICE CONNECTION



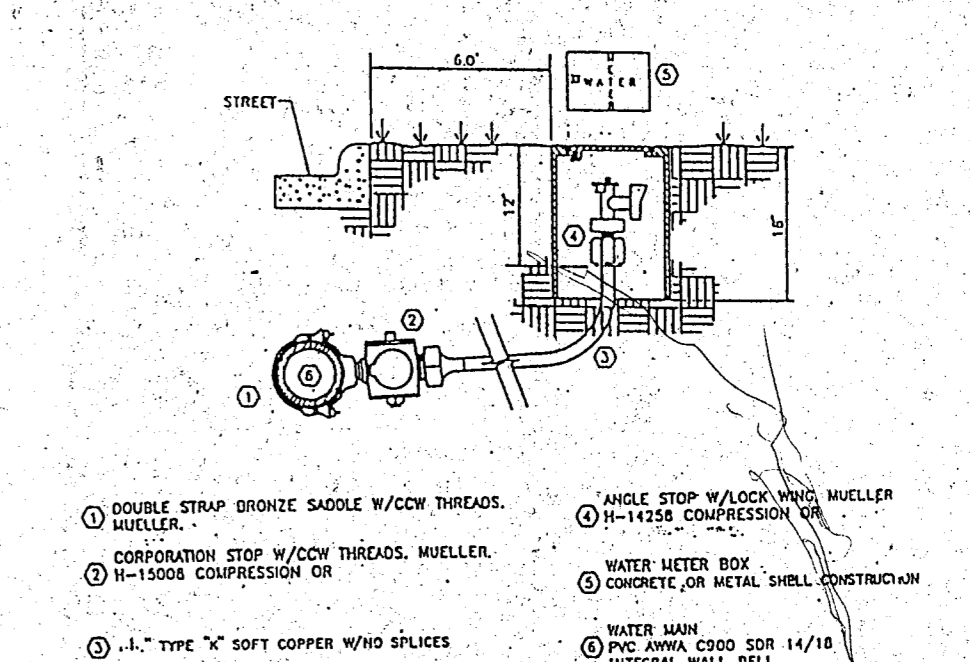
TYPICAL VALVE SETTING AND BOX



TYPICAL CLEANOUTS

NOTE:

- GATE VALVES SHALL BE IN ACCORDANCE WITH ANNA STANDARD C-509-00 OR LATEST THEREOF. ALL VALVES SHALL BE "MUELLER" OR APPROVED EQUAL.
- A PERMANENTLY ATTACHED VALVE EXTENSION STEM SHALL BE REQUIRED FOR ANY VALVE THATS OPERATING NUT IS LOCATED IN EXCESS OF 4 FEET BELOW THE TOP OF VALVE BOX. THIS EXTENSION SHALL BE OF SUFFICIENT LENGTH TO INSURE THAT ITS TOP IS WITHIN 4" OF VALVE BOX LID. MANUFACTURED VALVE STACK DUCTILE IRON PIPE TO BE USED FOR EXTENSION GREATER THAN 4" DUCTILE END OF STACK TO BE FITTED OVER VALVE. VALVE AND VALVE STACK IS TO BE POLY WRAPPED.
- VALVES SHALL BE OF DUCTILE IRON UNLESS OTHERWISE SPECIFIED. BOLTS SHALL BE STAINLESS STEEL OF SAME SIZE ON EACH END.



TYPICAL WATER SERVICE DETAIL

Bury + Pitman
Consulting Engineers and Surveyors
Dallas, Texas Tel: 214/981-0011 Fax: 214/981-0278
© Copyright 1995 Bury + Pitman-D.P.M., Inc.

STATE OF TEXAS
REGISTERED PROFESSIONAL ENGINEER
No. 2006
THE SEAL APPEARING ON THIS DOCUMENT WAS AUTHORIZED BY THE LEGISLATURE OF THE STATE OF TEXAS IN 1923.

WATER AND WASTEWATER DETAILS

EXCEL TELECOMMUNICATIONS WAREHOUSE
A DEVELOPMENT OF WILCOX/CMC ADDISON, INC.

Scale: 1" = 1' Date: 01-08-96
Tope: Drawn by: C.D.R.
Xref: NONE
File: 02702SD1.DWG
Approved by: O.L.V.
Project No.: 3027-02

SHEET 9 OF 10