

Vantage Properties, Inc.
Vol. 82006, Pg. 0361

Triangle Pacific Addition
Vol. 79129, Pg. 0018

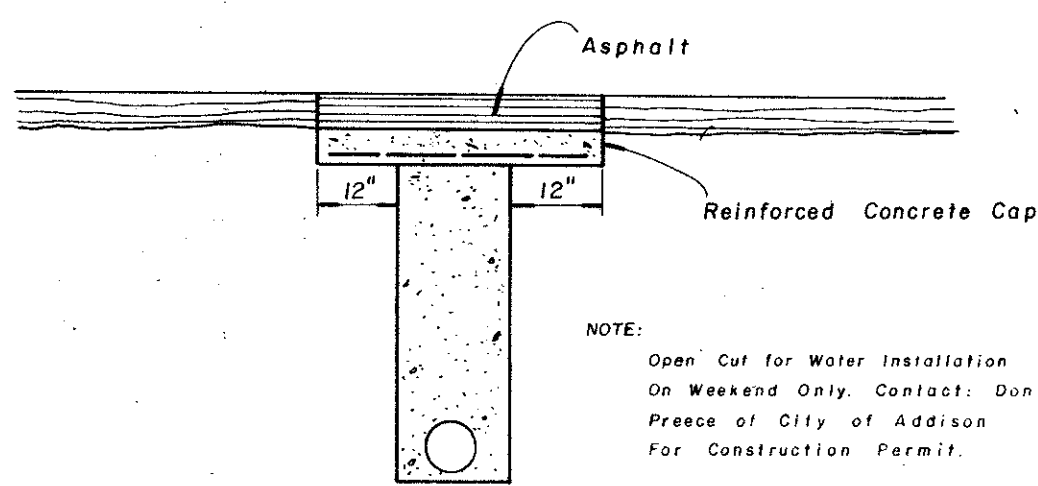
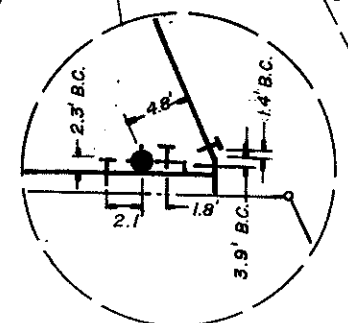
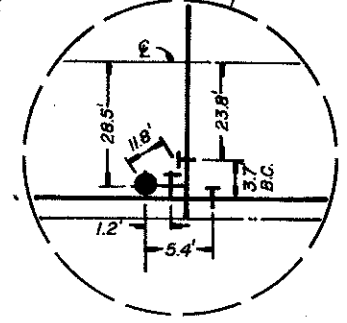
Bent Addison Joint Venture
Vol. 80148, Pg. 212

CAUTION!!!
Contact Lone Star Gas
Before Construction

0.400 Conn to Exist. 16"
Install:
1-16" x 10" Tapping
Sleeve & Valve

2.410 - Install:
1-10" x 8" Cross
1-10" Valve
1-8" Valve
1-8" x 6" Tee
1-6" Valve
1-F.H. No. 7
2-8" Plugs

4 x 85 - Install:
1-10" x 10" Tee
2-10" Valves
1-10" x 6" Tee
1-6" Valve
1-F.H. No. 8
2-10" Plugs
1-10" 22 1/2° Bend
1-6" 90° Bend



Detail For Open Cut
N.T.S.

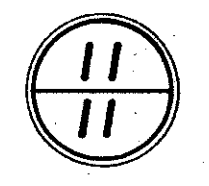
NOTE:
The Contractor Shall Protect All Public Utilities in the Construction Of This Project. All Manholes, Cleanouts Valve Boxes, Fire Hydrants, etc., Must Be Adjusted To Proper Line And Grade By The Contractor After Placing Of Permanent Paving.

FIRE HYDRANT ELEVATIONS

No.	Elev. at Bottom of Flange
7.	639.60
8.	637.35

As - Built Information was provided by Utility Contractor. Worrell & Associates, Inc. assumes no responsibility for placement of utilities.

Worrell & Associates, Inc.
10/30/83



"AS BUILT" 12-15-83

DESIGN		DRAWN		DATE		SCALE		NOTES		FILE		NO.	
WBA	RDK	OCT '82	1+50'	8201-01									

BENCH MARK # 1
"□" on T.C. 60' east of Addison Road north side of Westgrove
ELEVATION: 641.96

BENCH MARK # 2
"□" on T.C. 100± north of Sir Lancelot Drive, west side of Addison Road
ELEVATION: 642.49