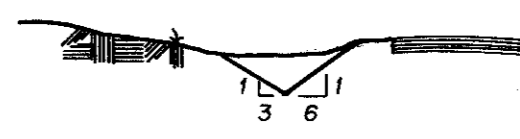


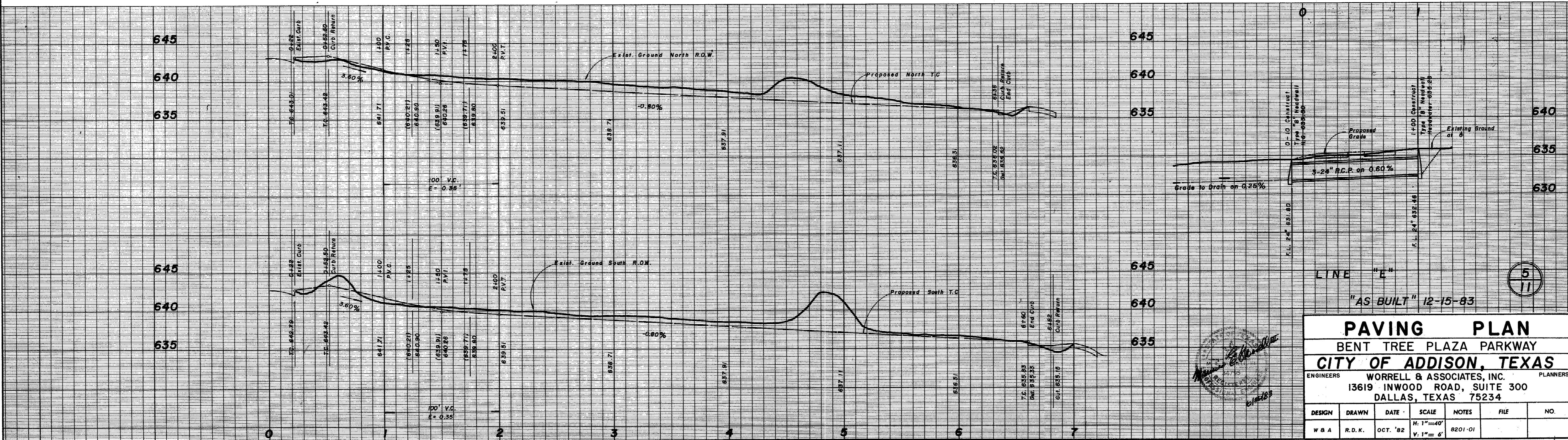
Typical Section



Typical Grade to Drain
Approx. 560LF

The contractor is responsible to preserve the final alignment and grade stakes as set by the engineer until the completed pavement is accepted by the City. In the event stakes are lost, the engineer accepts no responsibility for pavement alignment or grade.

- BENCH MARK # 1
"□" on T.C. 60' east of Addison Road north side of Westgrove Drive
ELEVATION: 641.96
- BENCH MARK # 2
"□" on T.C. 100'± north of Sir Lancelot Drive, west side of Addison Road
ELEVATION: 642.49



LINE "E"
"AS BUILT" 12-15-83

PAVING PLAN
BENT TREE PLAZA PARKWAY
CITY OF ADDISON, TEXAS
 ENGINEERS: WORRELL & ASSOCIATES, INC. PLANNERS
 13619 INWOOD ROAD, SUITE 300
 DALLAS, TEXAS 75234

DESIGN	DRAWN	DATE	SCALE	NOTES	FILE	NO.
W 8 A	R. D. K.	OCT. '82	H: 1"=40' V: 1"= 6'	8201-01		