

- LEGEND**
- +641.74 EXISTING SPOT GRADE
 - +42.12 PROPOSED SPOT GRADE
 - 8" HMAC PAVEMENT
 - 6" CONCRETE PAVEMENT
 - 2" HMAC OVERLAY

CONSTRUCTION SET
 ISSUED BY
 TOWN OF ADDISON
 PUBLIC WORKS DEPARTMENT
 NAME: *R. Wright* DATE: 9/20/94

ROBERT L. WRIGHT
 5510
 PROFESSIONAL ENGINEER
 STATE OF TEXAS
Robert L. Wright
 5-23-94

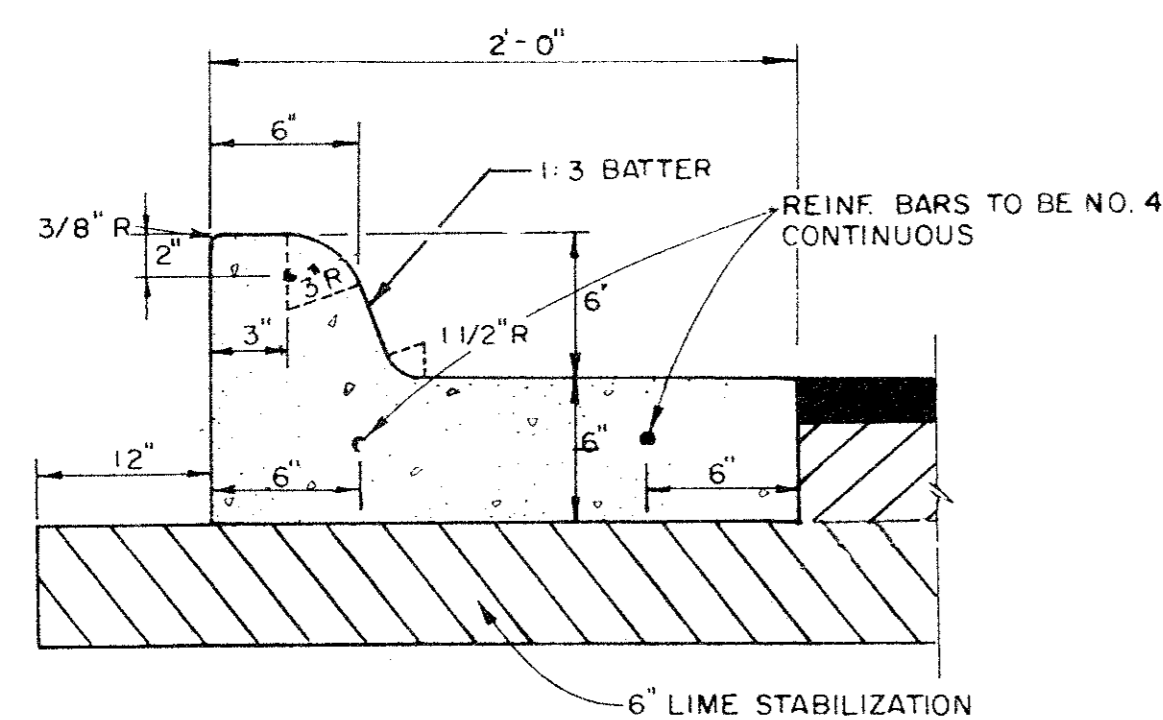
1
2

REVISED 7-7-94
 ISSUED FOR BIDS 6-13-94
 N.W. NEEDHAM WRIGHT LASKEY
 ENGINEERS INC.
 10290 MONROE DRIVE
 SUITE 305
 DALLAS, TEXAS 75229
 PH. 214 357 2981
 JOB NO. 93-443 SHEET NO.

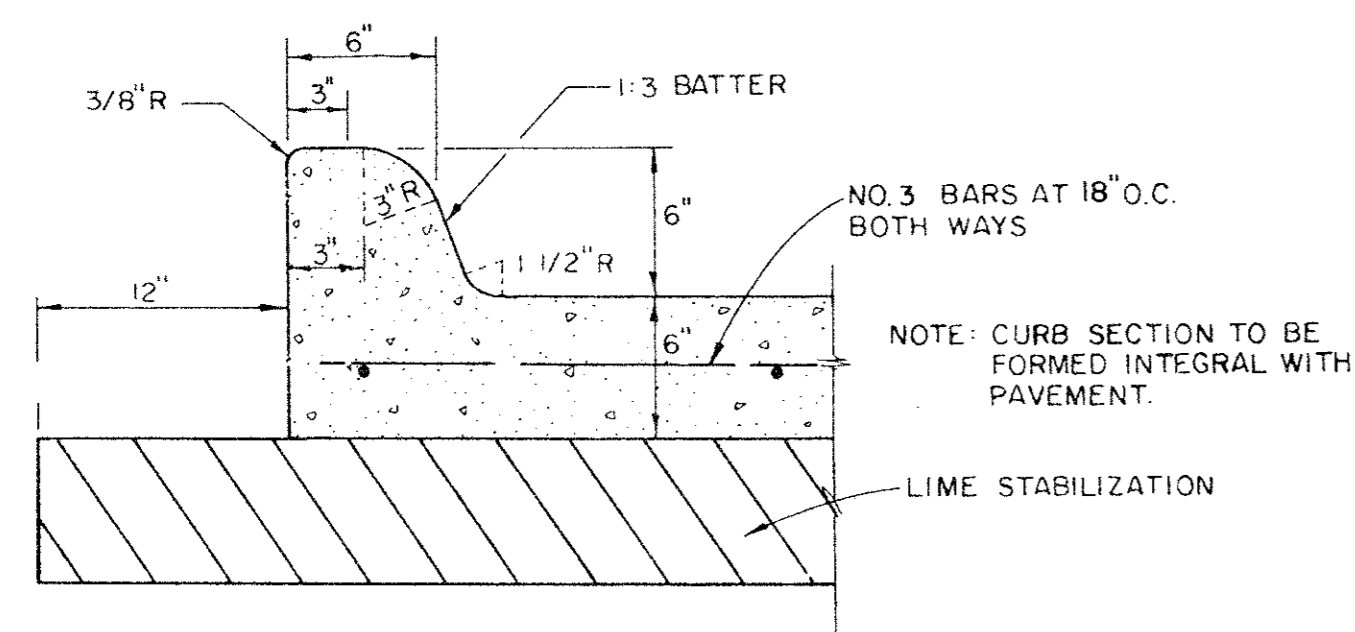
PAVING PLAN						
FRANK LUKE STREET						
ADDISON TOWER						
CONTRACT NO. 1						
TOWN OF ADDISON, TEXAS						
DESIGN	DRAWN	DATE	SCALE	NOTES	FILE	NO.
N.W.L.	N.W.L.		1" = 20' H. 1" = 6' V.			

GENERAL NOTES

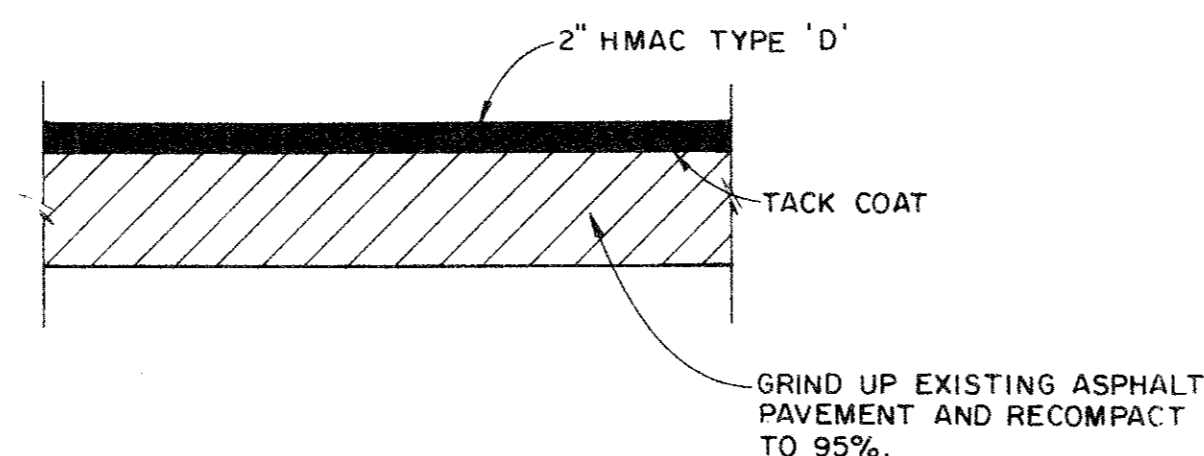
1. All work shall be in accordance with the requirements of the Town of Addison.
2. Contractor to adjust all manholes, valves, meter boxes, etc. to the final grade.
3. All excess excavation and waste material to be disposed of offsite.
4. 2" HMAc overlay to be type "D". Where overlay interfaces with existing pavement, undercut existing pavement to allow for a minimum thickness of 1".
5. Contractor to coordinate work schedule with adjoining property owners and tenants to minimize traffic interruptions and access to adjoining tracts.



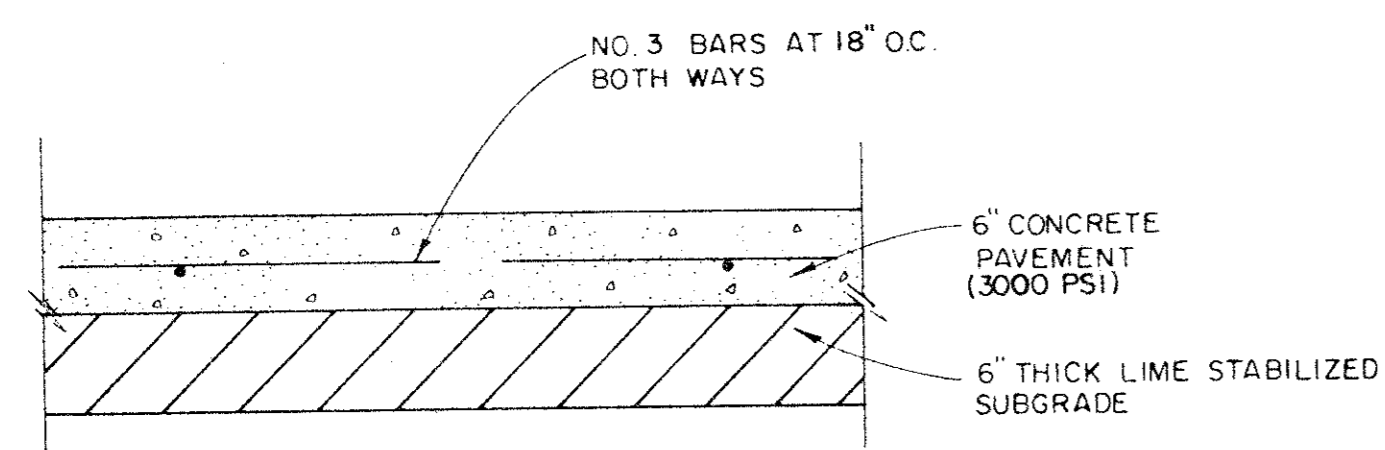
SEPARATE 24" CONC. CURB & GUTTER
N.T.S.



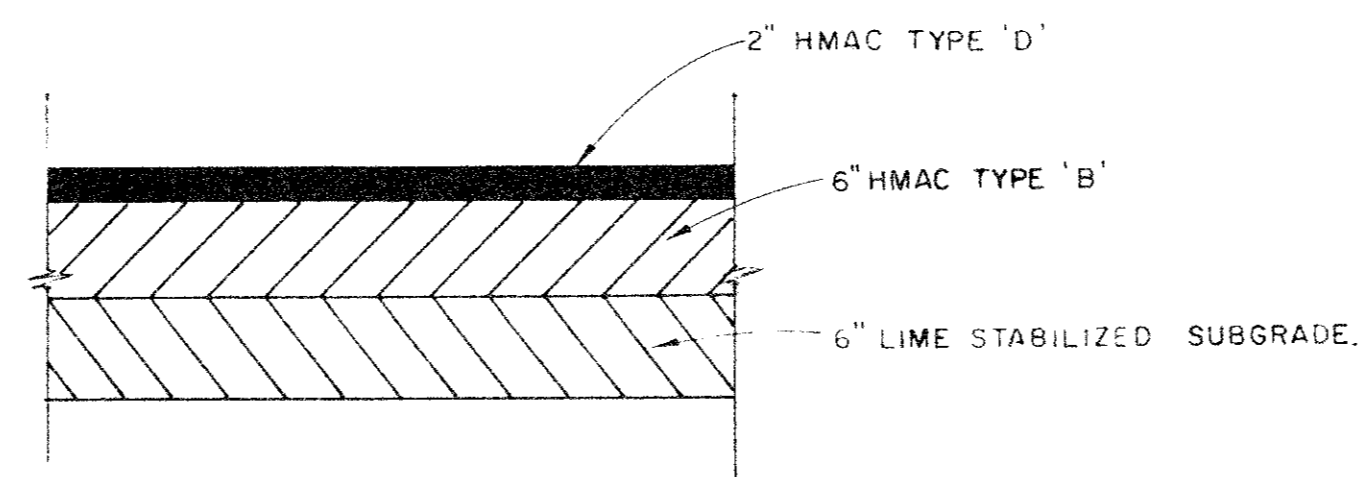
INTEGRAL CONC. CURB & GUTTER
N.T.S.



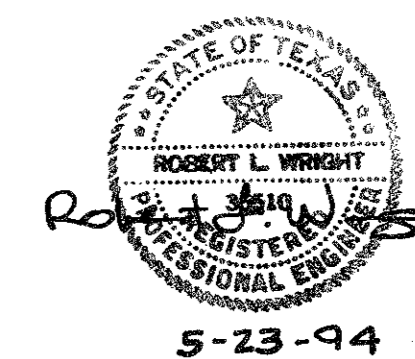
2" ASPHALT OVERLAY
N.T.S.



CONCRETE PAVEMENT
N.T.S.



ASPHALT PAVEMENT SECTION
N.T.S.



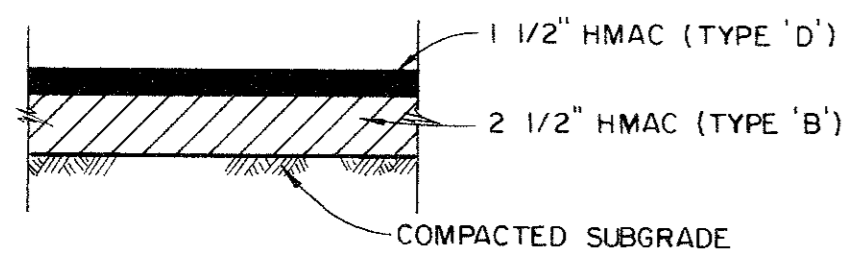
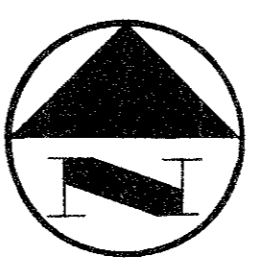
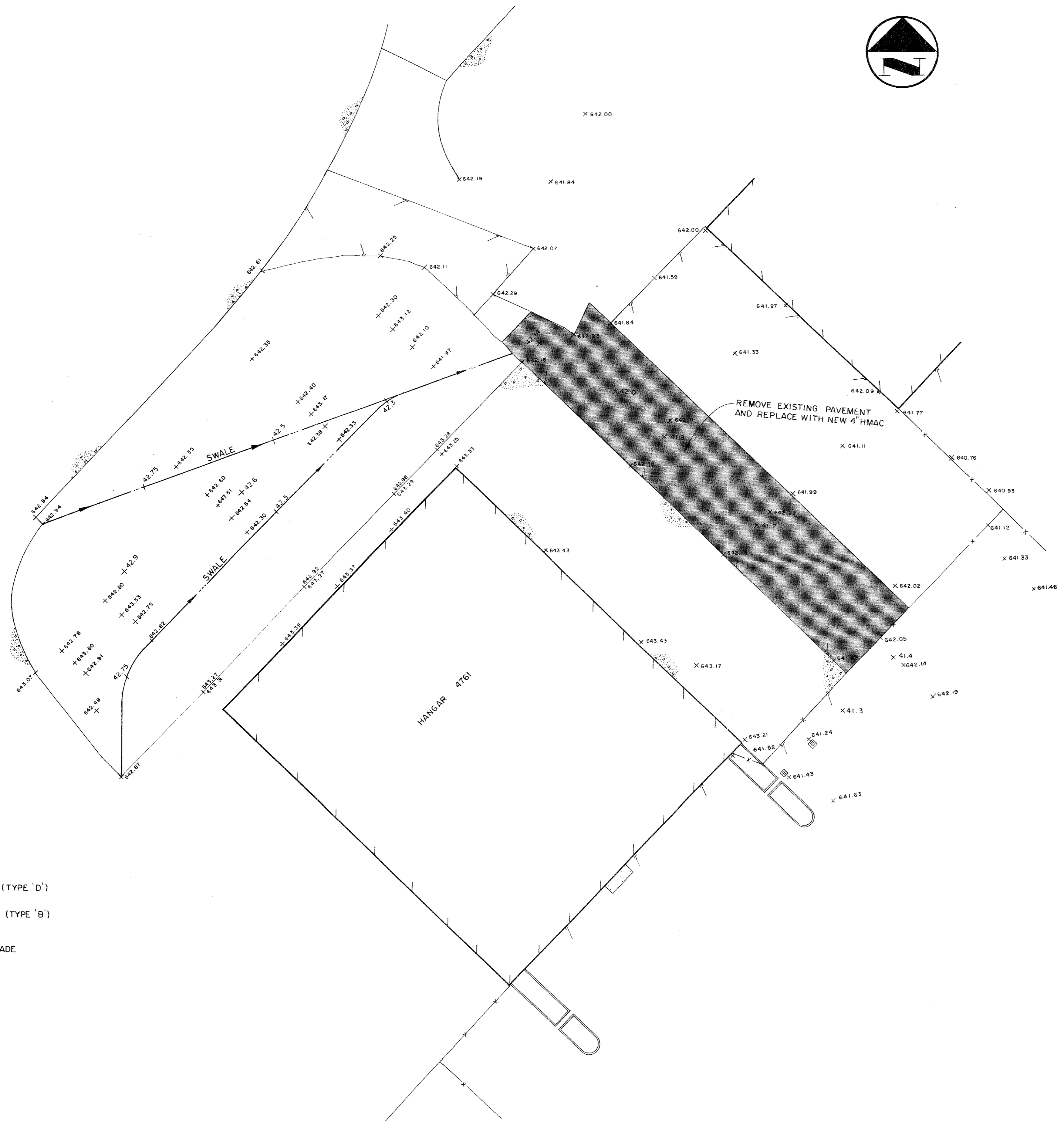
2
2

DETAILS						
FRANK LUKE STREET						
ADDISON TOWER						
CONTRACT NO. 1						
TOWN OF ADDISON, TEXAS						
DRAWN	DESIGN	DATE	SCALE	NOTES	FILE	NUMBER
N.W.L.	N.W.L.		AS SHOWN			

ISSUED FOR BIDS 6-13-94

N.W. NEEDHAM WRIGHT LASKEY ENGINEERS INC.
10290 MONROE DRIVE
SUITE 305
DALLAS, TEXAS, 75228
PH. 214 357 2981 SHEET NO.

WRIGHT



TYPICAL PAVEMENT SECTION
N.T.S.

FROM COMPUTER FILE

SITE IMPROVEMENTS						
4761 FRANK LUKE STREET						
ADDISON AIRPORT						
CONTRACT NO. 2						
TOWN OF ADDISON, TEXAS						
DRAWN	DESIGN	DATE	SCALE	NOTES	FILE	NUMBER
N.W.L.	N.W.L.	3-31-94	1" = 20'			

N.W. NEEDHAM WRIGHT LASKEY
 ENGINEERS INC.
 10280 MONROE DRIVE
 SUITE 305
 DALLAS, TEXAS, 75229
 PH. 214 357 2981 SHEET NO.

REVISIONS