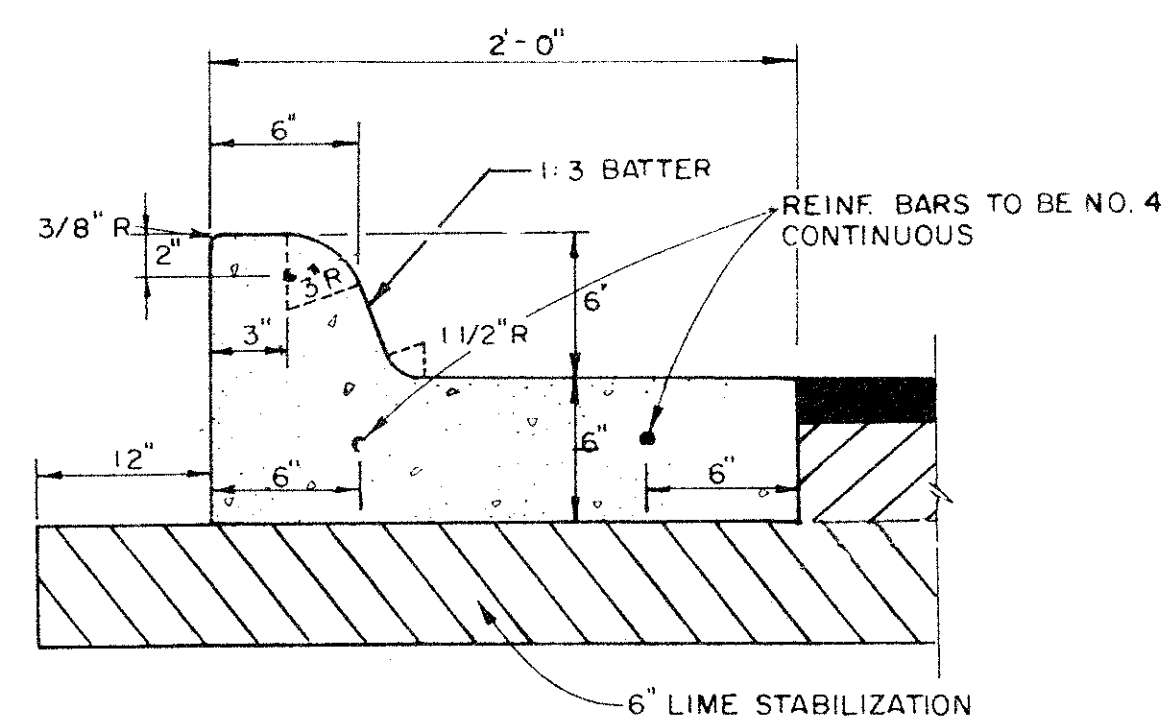
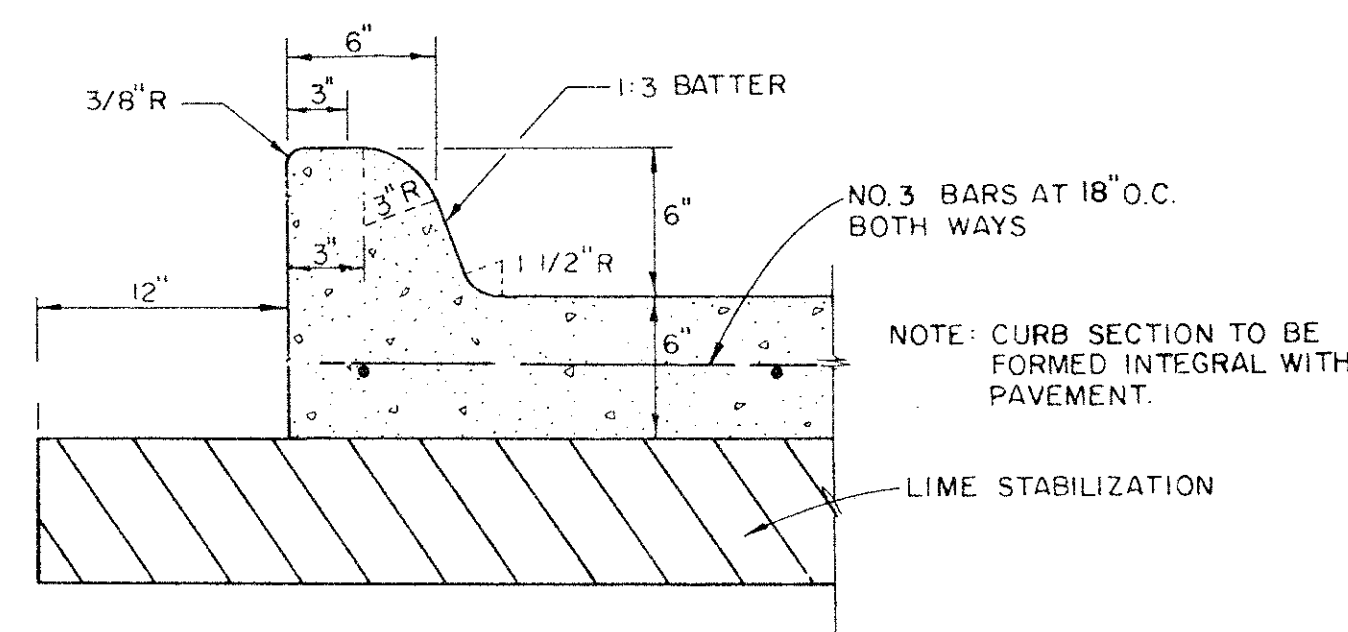


GENERAL NOTES

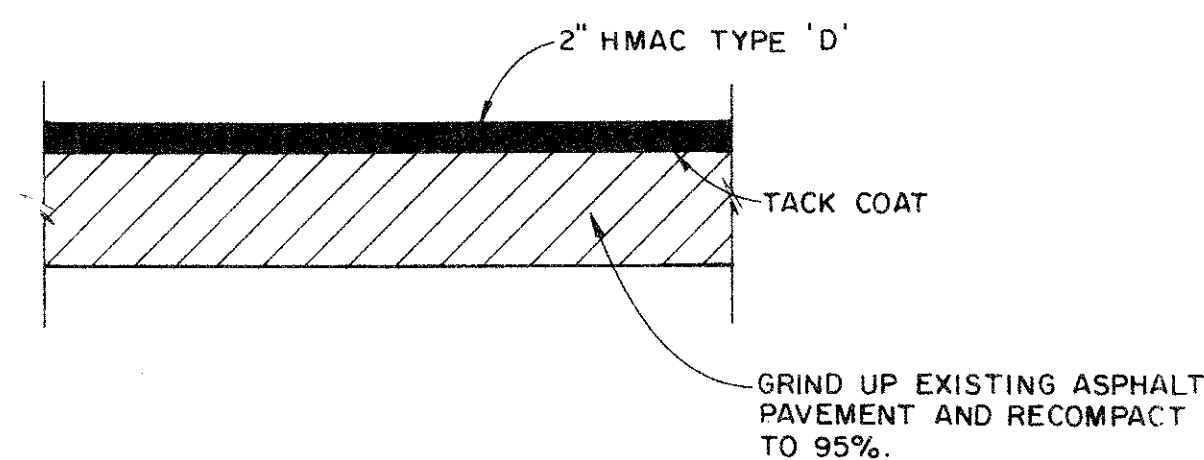
1. All work shall be in accordance with the requirements of the Town of Addison.
2. Contractor to adjust all manholes, valves, meter boxes, etc. to the final grade.
3. All excess excavation and waste material to be disposed of offsite.
4. 2" HMAc overlay to be type "D". Where overlay interfaces with existing pavement, undercut existing pavement to allow for a minimum thickness of 1".
5. Contractor to coordinate work schedule with adjoining property owners and tenants to minimize traffic interruptions and access to adjoining tracts.



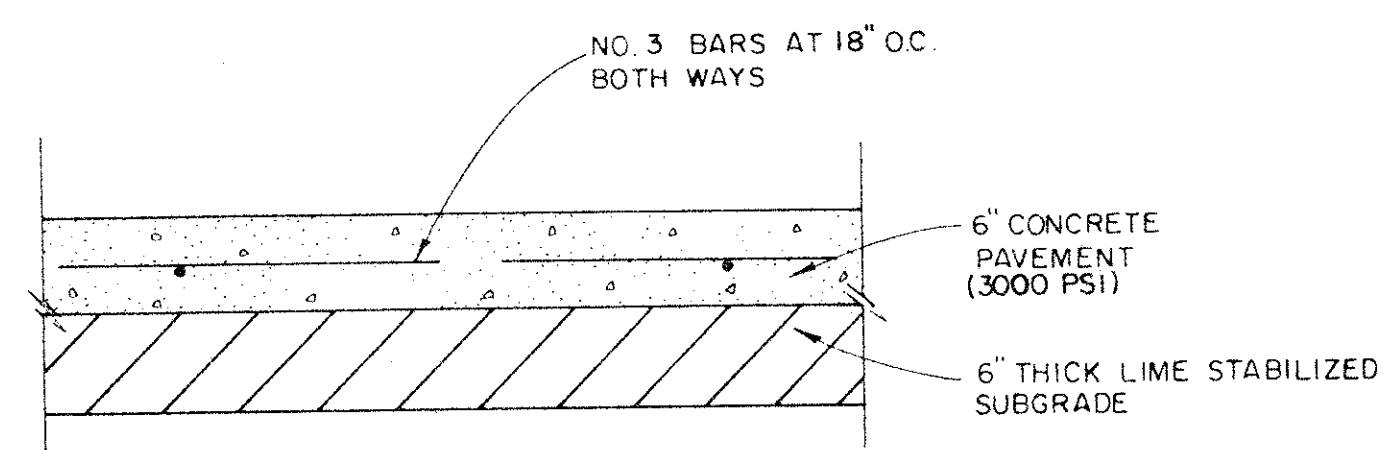
SEPARATE 24" CONC. CURB & GUTTER
N.T.S.



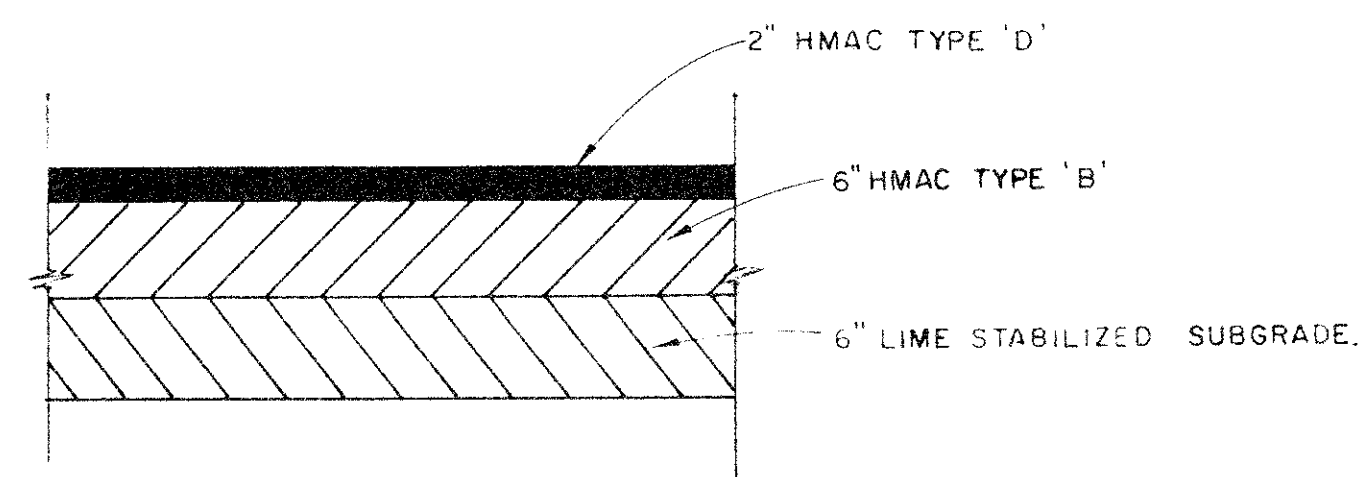
INTEGRAL CONC. CURB & GUTTER
N.T.S.



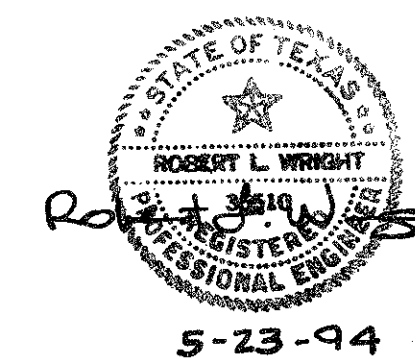
2" ASPHALT OVERLAY
N.T.S.



CONCRETE PAVEMENT
N.T.S.



ASPHALT PAVEMENT SECTION
N.T.S.



2/2

DETAILS						
FRANK LUKE STREET						
ADDISON TOWER						
CONTRACT NO. 1						
TOWN OF ADDISON, TEXAS						
DRAWN	DESIGN	DATE	SCALE	NOTES	FILE	NUMBER
N.W.L.	N.W.L.		AS SHOWN			

ISSUED FOR BIDS 6-13-94
NEEDHAM WRIGHT LASKEY ENGINEERS INC.
 10290 MONROE DRIVE SUITE 305
 DALLAS, TEXAS, 75228
 PH. 214 357 2981 SHEET NO. JOB NO. 93-443