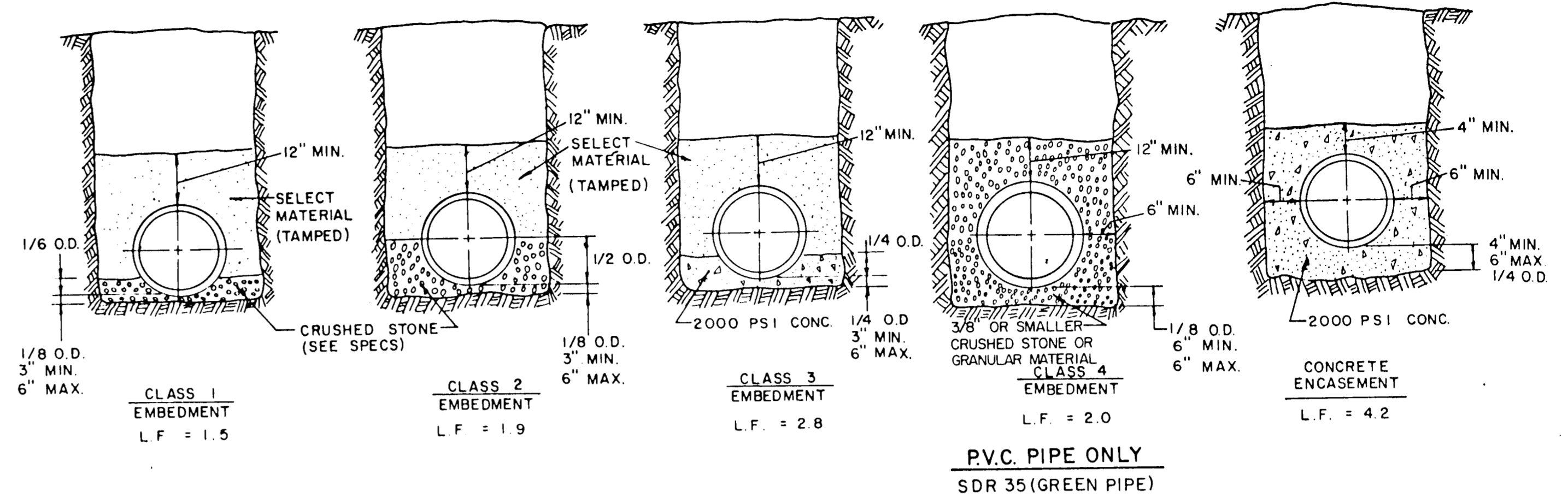


EMBEDMENT DETAILS FOR RCCP WATERLINE

TABLE OF QUANTITIES OF MATERIALS IN CUBIC YARDS PER 100 LINEAR FEET

| INSIDE DIAMETER OF PIPE | APPROX OUTSIDE DIAMETER OF PIPE | IS A MINIMUM DEPTH | TRENCH WIDTH FOR COMPUTATION OF QUANTITIES | CONCRETE | | CRUSHED STONE FOR CLASS "1" EMBEDMENT |
|-----------------------------------|---------------------------------|--------------------|--|---------------|----------------|---------------------------------------|
| | | | | FOR EMBEDMENT | FOR ENCASEMENT | |
| REINFORCED CONCRETE CYLINDER PIPE | | | | | | |
| 14" | 17.25" | 2.53' | 3.4' | 6.91 | 16.07 | 5.16 |
| 16" | 19.38" | 2.84' | 3.6' | 7.50 | 17.76 | 5.64 |
| 18" | 21.78" | 3.19' | 3.8' | 8.11 | 19.52 | 6.16 |
| 24" | 27.75" | 4.06' | 4.4' | 9.97 | 24.90 | 9.28 |

TYPICAL NATIVE MATERIAL COMPACTED TO:
 95% OPTIMUM MOISTURE 0 TO +3% UNDER PAVEMENT
 95% OPTIMUM MOISTURE 0 TO +3% OUTSIDE CURB LINES
 JETTING IS NOT ALLOWED
 BACKFILL TO BE COMPACTED IN 6"± LIFTS
 TYPICAL NATIVE MATERIAL (MAX. 3" DIA.)

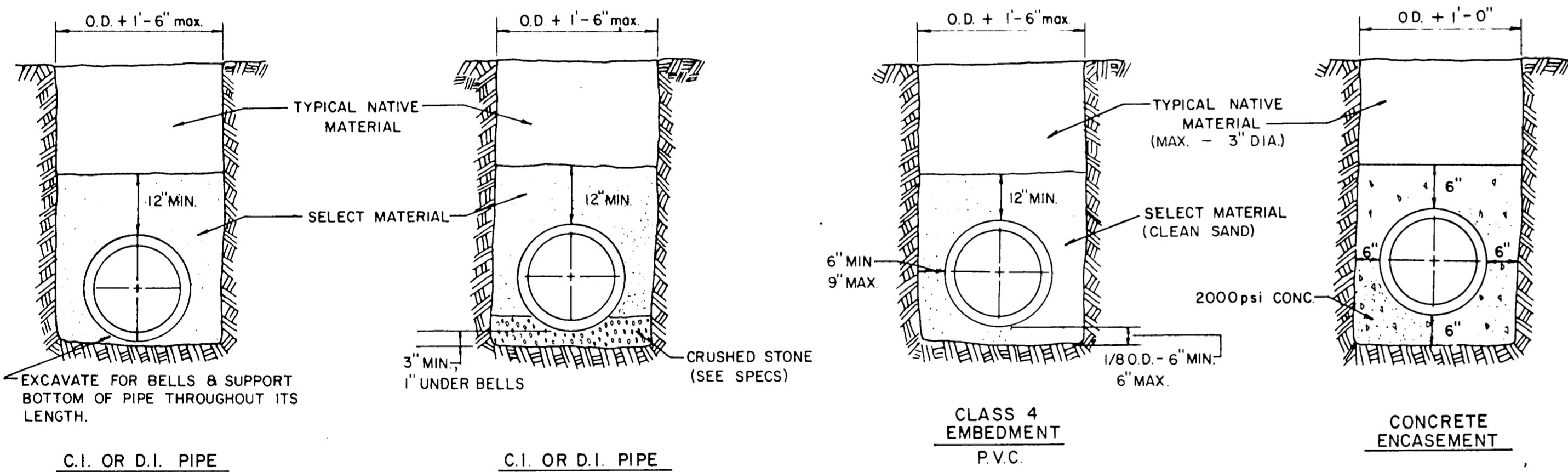


EMBEDMENT DETAILS FOR SANITARY SEWER

TABLE OF QUANTITIES OF 2000 PSI CONCRETE, GRAVEL OR CRUSHED STONE IN CUBIC YARDS PER 100 LINEAR FEET FOR EACH CLASS EMBEDMENT

TABLE OF QUANTITIES PER 100 LINEAR FEET REINFORCED CONCRETE PIPE

| SIZE OF PIPE IN INCHES I.D. | O.D. OF PIPE IN INCHES | TRENCH WIDTH IN INCHES | TRENCH WIDTH IN FEET | CLASS 1 EMBEDMENT CRUSHED STONE | CLASS 2 EMBEDMENT CRUSHED STONE | CLASS 3 EMBEDMENT CONCRETE | CONCRETE ENCASEMENT |
|-----------------------------|------------------------|------------------------|----------------------|---------------------------------|---------------------------------|----------------------------|---------------------|
| 12 | 16.00 | 32 | 2.67 | 4.1 | 6.5 | 4.8 | 15.8 |
| 15 | 19.50 | 36 | 3.00 | 4.8 | 7.8 | 6.4 | 19.2 |
| 18 | 23.00 | 39 | 3.25 | 5.7 | 9.2 | 8.2 | 24.9 |
| 21 | 26.50 | 43 | 3.58 | 6.9 | 11.0 | 10.2 | 28.7 |
| 24 | 30.00 | 46 | 3.83 | 8.3 | 13.1 | 12.4 | 32.8 |
| 27 | 33.50 | 51 | 4.25 | 10.3 | 16.1 | 14.4 | 34.8 |
| 30 | 37.00 | 57 | 4.75 | 12.7 | 20.1 | 17.0 | 39.2 |
| 33 | 40.50 | 62 | 5.17 | 15.1 | 23.8 | 19.3 | 43.8 |
| 36 | 44.00 | 67 | 5.58 | 18.0 | 28.6 | 22.1 | 43.8 |

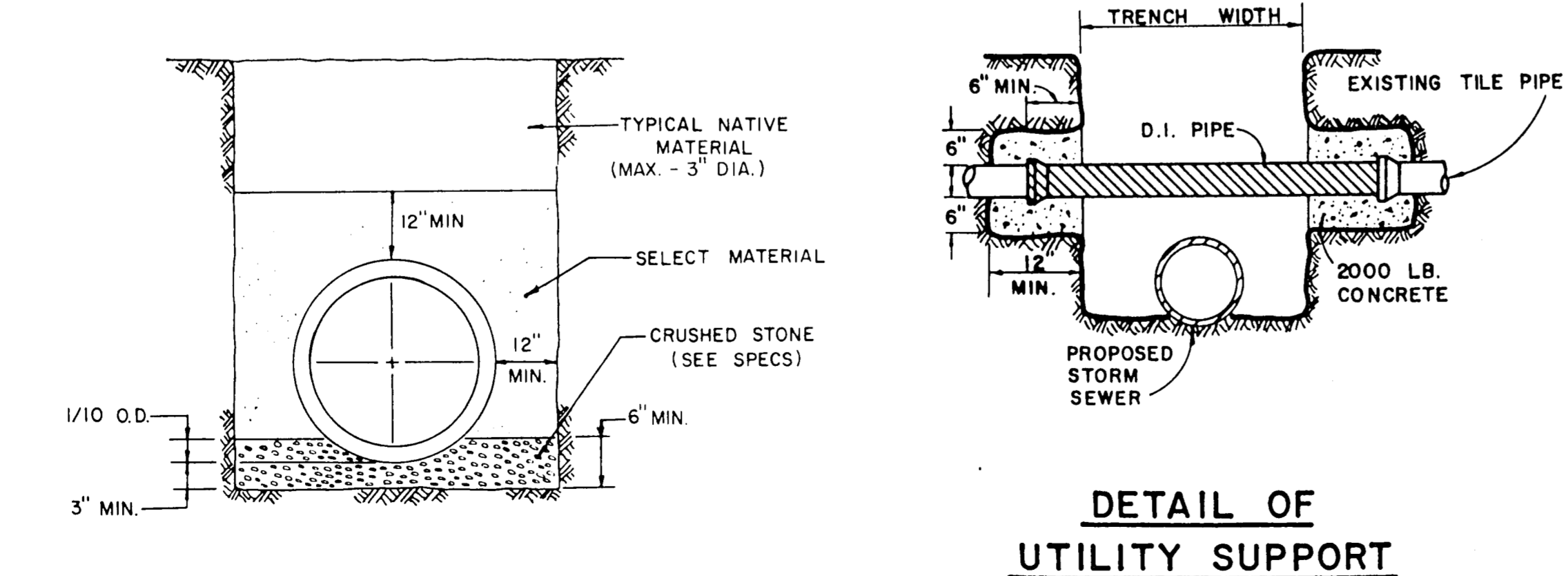
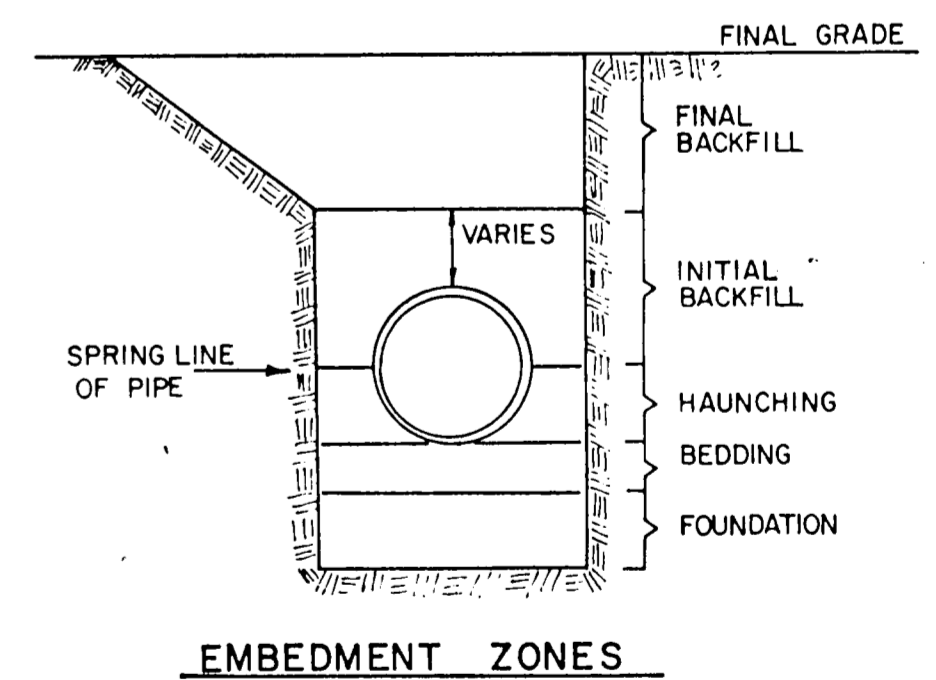


EMBEDMENT DETAILS FOR WATER MAIN

TABLE OF QUANTITIES PER 100 LINEAR FEET-PVC PIPE (IN CUBIC YARDS)

| SIZE OF PIPE IN INCHES | O.D. OF PIPE IN INCHES | TRENCH WIDTH IN INCHES | TRENCH WIDTH IN FEET | CLASS 4 EMBEDMENT CRUSHED STONE | CONCRETE ENCASEMENT |
|------------------------|------------------------|------------------------|----------------------|---------------------------------|---------------------|
| 6 | 6.28 | 24 | 2.00 | 8.0 | 11.7 |
| 8 | 8.16 | 24 | 2.00 | 8.7 | 12.4 |
| 10 | 10.20 | 26 | 2.18 | 10.2 | 14.2 |
| 12 | 12.24 | 28 | 2.35 | 11.7 | 15.9 |
| 16 | 15.30 | 31 | 2.61 | 14.0 | 18.8 |
| 24 | | 36 | 3.0 | | |
| 30 | | 42 | 3.5 | | |

NOTE: ALL SANITARY SEWER LINES THIS PROJECT SHALL HAVE CLASS 4 EMBEDMENT UNLESS OTHERWISE NOTED.



AS BUILTS

I CERTIFY THIS PROJECT WAS CONSTRUCTED IN GENERAL CONFORMANCE WITH THESE CONSTRUCTION PLANS AND WILL FUNCTION AS DESIGNED.

TOWN OF ADDISON, TEXAS
DEPARTMENT OF ENGINEERING

STANDARD CONSTRUCTION DETAILS

EMBEDMENT DETAILS

| | | | |
|------------|-----------|---------------------|-------------------|
| Designed - | Drawn - | Date - AUGUST, 1991 | Job No. - 90025-6 |
| Approved - | Checked - | Scale - | Sheet D-5 of |