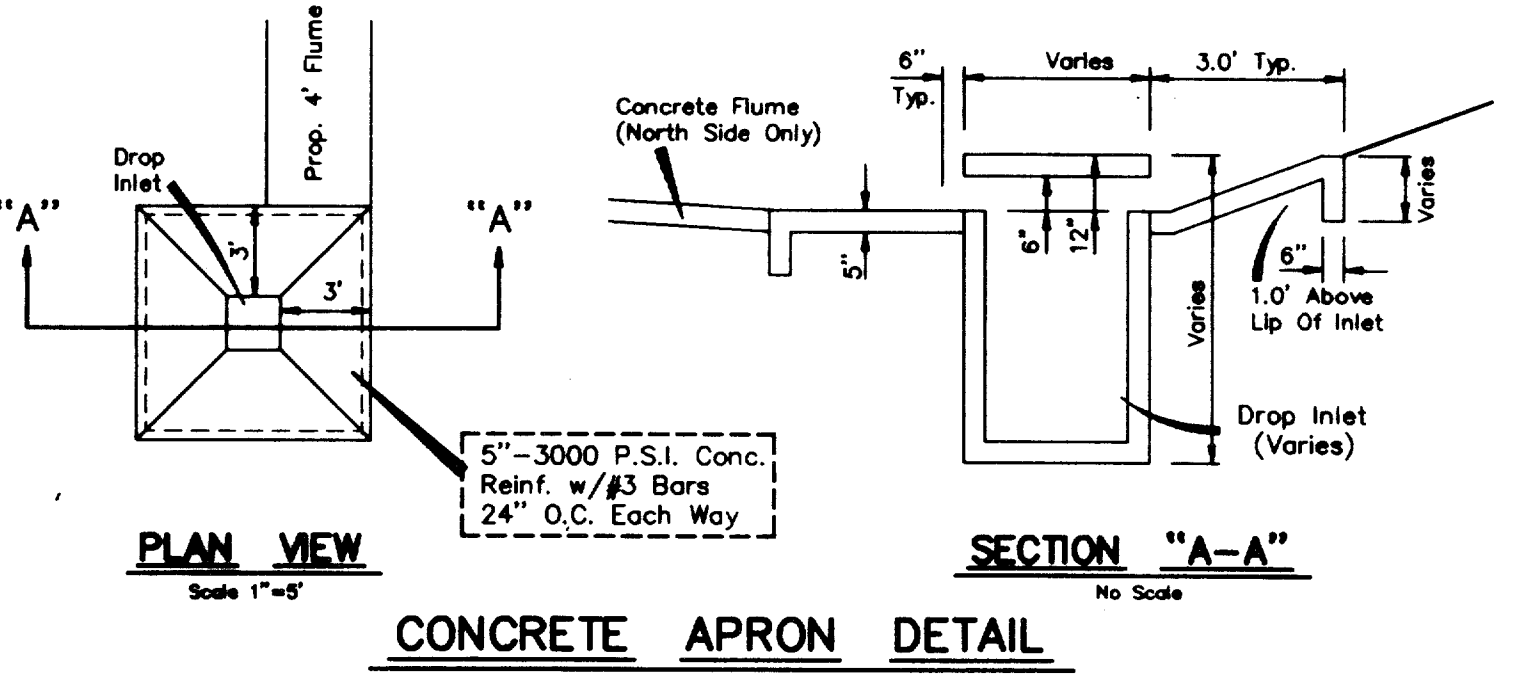
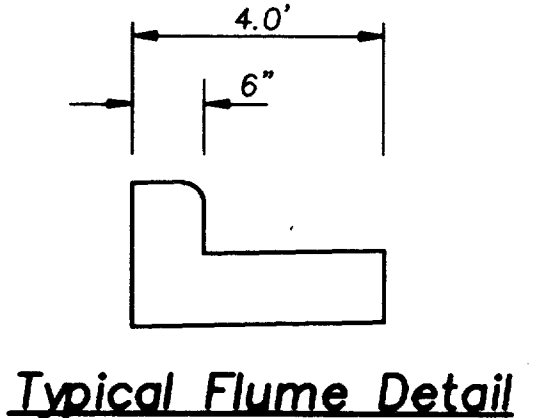


NOTE!
TEMP. DROP INLET AT END OF STREET PAVING
TO BE REMOVED WITH CONSTRUCTION OF PHASE 2



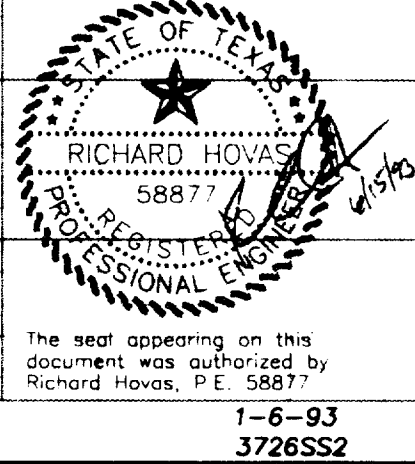
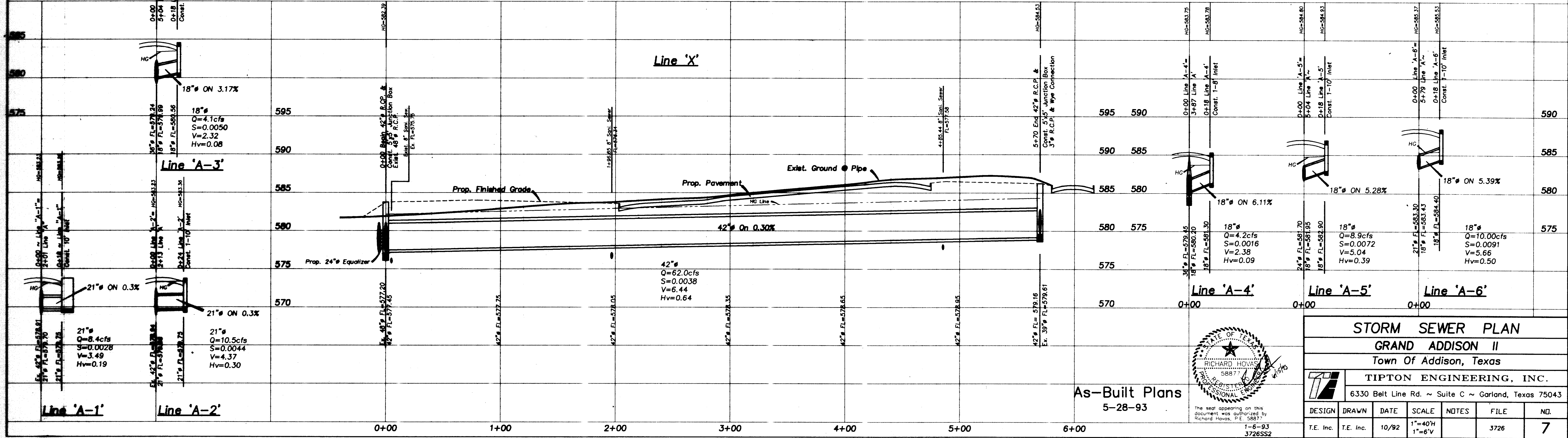
CAUTION !!!
EXISTING UTILITIES

EXISTING UTILITIES AND UNDERGROUND FACILITIES INDICATED ON THESE PLANS HAVE BEEN LOCATED FROM REFERENCE INFORMATION. IT SHALL BE THE RESPONSIBILITY OF THE CONTRACTOR TO VERIFY BOTH HORIZONTALLY AND VERTICALLY THE LOCATION OF ALL EXISTING UTILITIES AND UNDERGROUND FACILITIES PRIOR TO CONSTRUCTION, TO TAKE NECESSARY PRECAUTIONS IN ORDER TO PROTECT ALL FACILITIES ENCOUNTERED. THE CONTRACTOR SHALL PRESERVE AND PROTECT ALL EXISTING UTILITIES FROM DAMAGE DURING CONSTRUCTION.

Bench Mark 1
"X" in C.L. of Les Lacs Avenue @ 325'± South of Proton Drive. Elev.=601.80
Bench Mark 2
"□" in top of curb North side of Les Lacs Ave. @ curb return Northwest corner of Meadow Creek Cir. Elev.=587.30

CV.1 A=79'28'31" R=70.0' T=58.19' L=97.10'	CV.2 A=79'13'49" R=70.0' T=57.94' L=96.80'	CV.3 A=4'56'18" R=250.0' T=10.78' L=21.55'	CV.4 A=85'03'42" R=70.0' T=64.21' L=103.92'
--	--	--	---

Notes:
1. Trench Safety Plans & Spec's To Be Furnished By Utility Contractor Prior To Start Of Construction.



As-Built Plans
5-28-93

STORM SEWER PLAN						
GRAND ADDISON II						
Town Of Addison, Texas						
TIPTON ENGINEERING, INC.						
6330 Belt Line Rd. ~ Suite C ~ Garland, Texas 75043						
DESIGN	DRAWN	DATE	SCALE	NOTES	FILE	NO.
T.E. Inc.	T.E. Inc.	10/92	1"=40'H 1"=6'V		3726	7