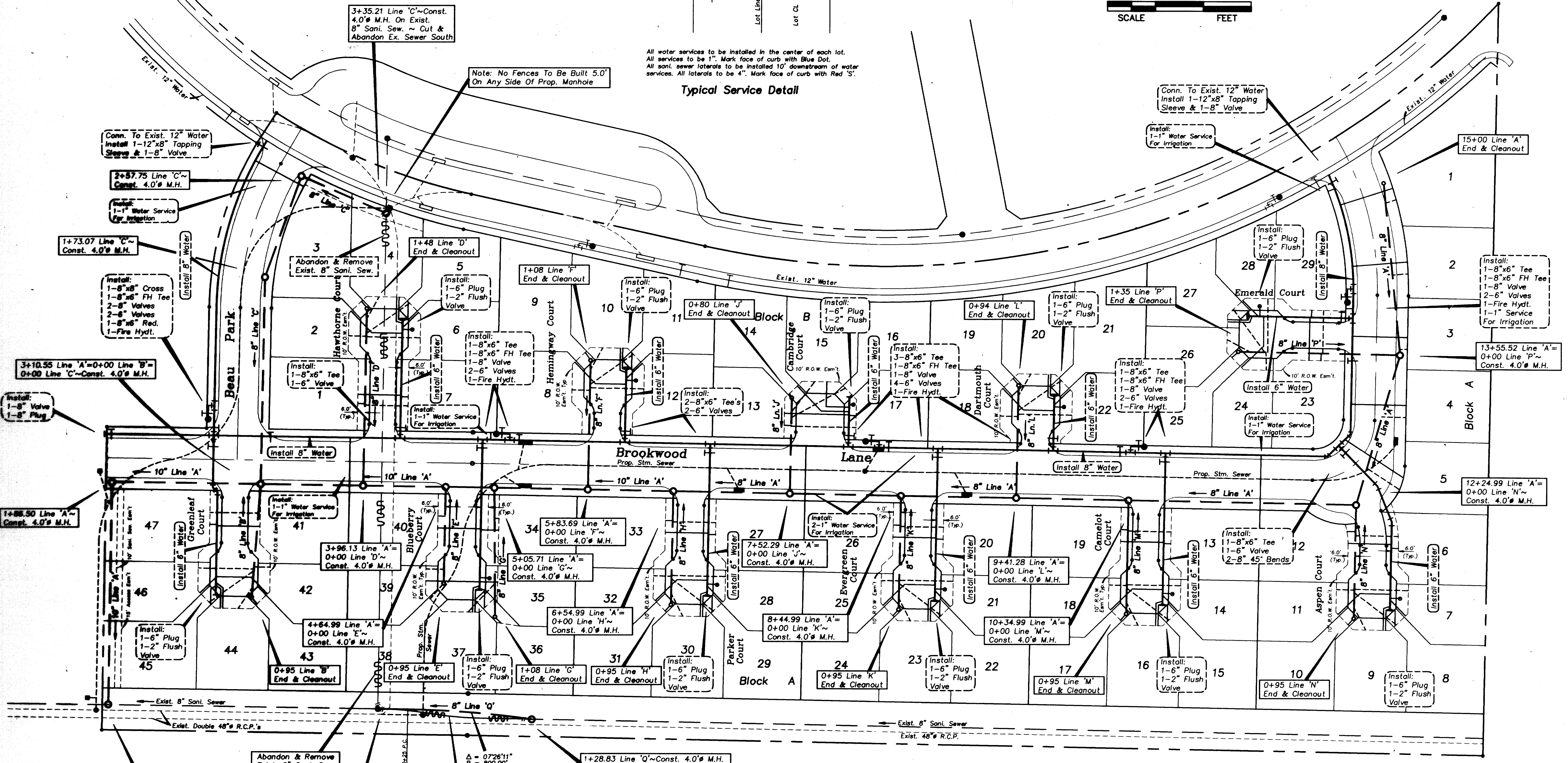


All water services to be installed in the center of each lot.
 All services to be 1". Mark face of curb with Blue Dot.
 All sani. sewer laterals to be installed 10' downstream of water services. All laterals to be 4". Mark face of curb with Red 'S'.

Typical Service Detail

Note: No Fences To Be Built 5.0'
 On Any Side Of Prop. Manhole



0+00 Line 'A' ~ Const. 4.0' M.H. On Exist. 8" Sani. Sewer

Abandon & Remove Exist. 8" Sani. Sew.

0+00 Line 'Q' ~ Conn. To Ex. 4.0' M.H. Cut & Plug Ex. 8" Sewer After Prop. 8" Sewer Is Installed & Operational

Abandon & Remove Exist. 8" Sani. Sew.

$\Delta = 0726'11"$
 $R = 800.00'$
 $T = 51.99'$
 $L = 103.83'$

1+28.83 Line 'Q' ~ Const. 4.0' M.H. w/Drop Connection & Conn. Exist. 8" Sewer To M.H. Cut & Plug Exist. 8" Sewer After Prop. 8" Sewer Is Connected To Exist. M.H.

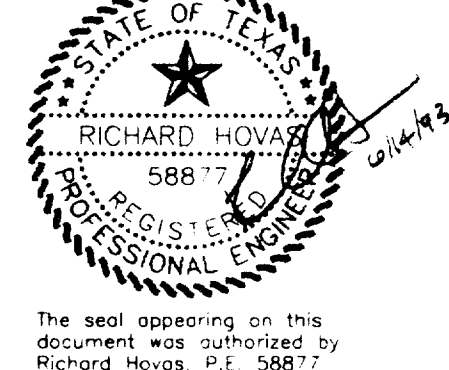
- Notes:
1. Trench Safety Plans & Spec's To Be Furnished by Utility Contractor Prior To Start Of Construction.
 2. Proposed 10" Sani. Sewer To Be Installed For Grade Purposes Only.
 3. Adjust All Sanitary Sewer M.H.'s To Grade Within Greenbelt Area.

CAUTION !!!
 EXISTING UTILITIES

EXISTING UTILITIES AND UNDERGROUND FACILITIES INDICATED ON THESE PLANS HAVE BEEN LOCATED FROM REFERENCE INFORMATION. IT SHALL BE THE RESPONSIBILITY OF THE CONTRACTOR TO VERIFY BOTH HORIZONTALLY AND VERTICALLY THE LOCATION OF ALL EXISTING UTILITIES AND UNDERGROUND FACILITIES PRIOR TO CONSTRUCTION, TO TAKE NECESSARY PRECAUTIONS IN ORDER TO PROTECT ALL FACILITIES ENCOUNTERED. THE CONTRACTOR SHALL PRESERVE AND PROTECT ALL EXISTING UTILITIES FROM DAMAGE DURING CONSTRUCTION.

Note!
 See Sheet BA For Ties To All As-Built Plans
 Valve, Fire Hydt's, & Manholes.

As-Built Plans
 5-28-93



WATER & SEWER PLAN						
GRAND ADDISON II						
Town Of Addison, Texas						
TIPTON ENGINEERING, INC.						
6330 Belt Line Rd. ~ Suite C ~ Garland, Texas 75043						
DESIGN	DRAWN	DATE	SCALE	NOTES	FILE	NO.
T.E. Inc.	T.E. Inc.	10/92	1"=40'		3726	8