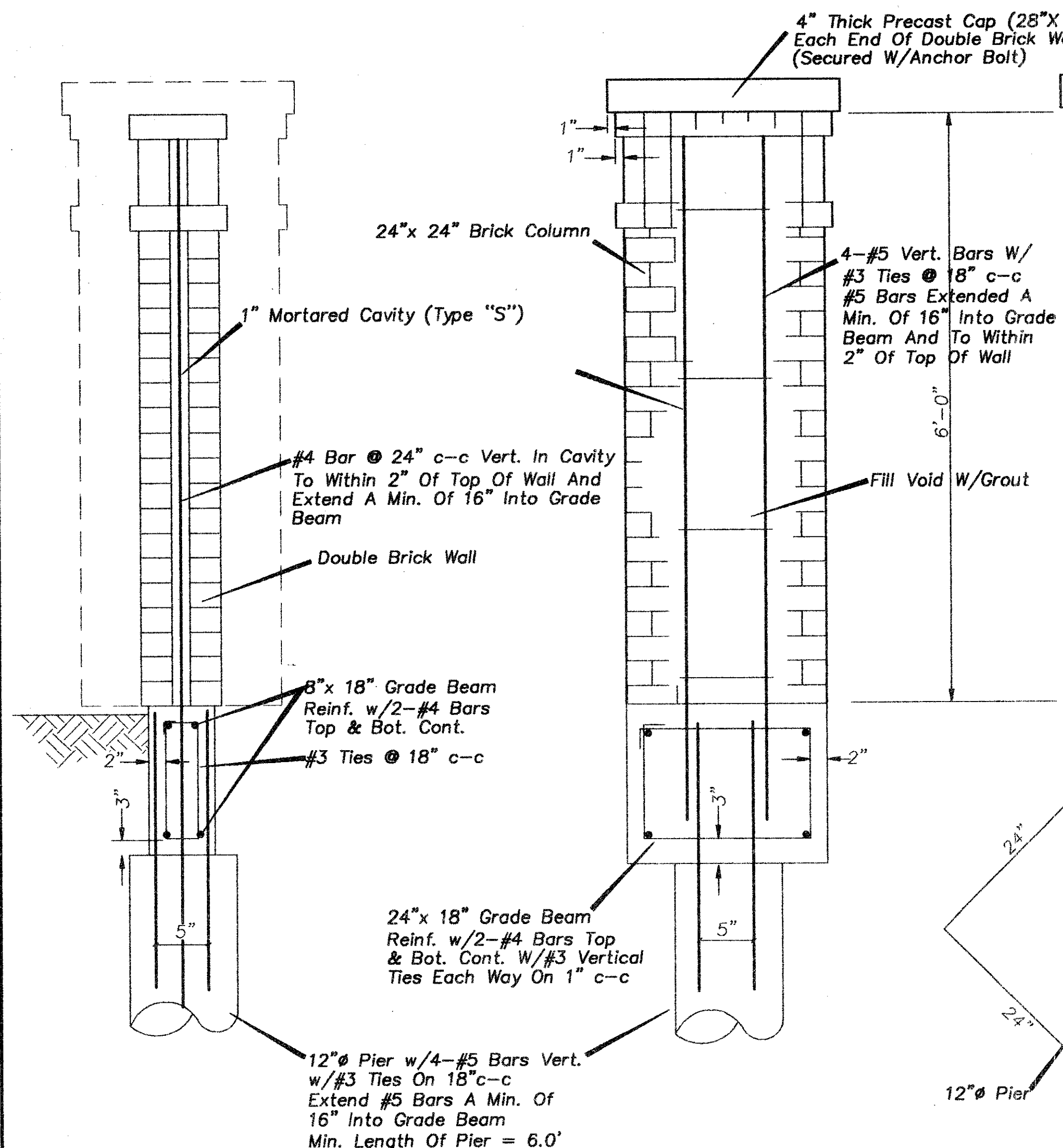


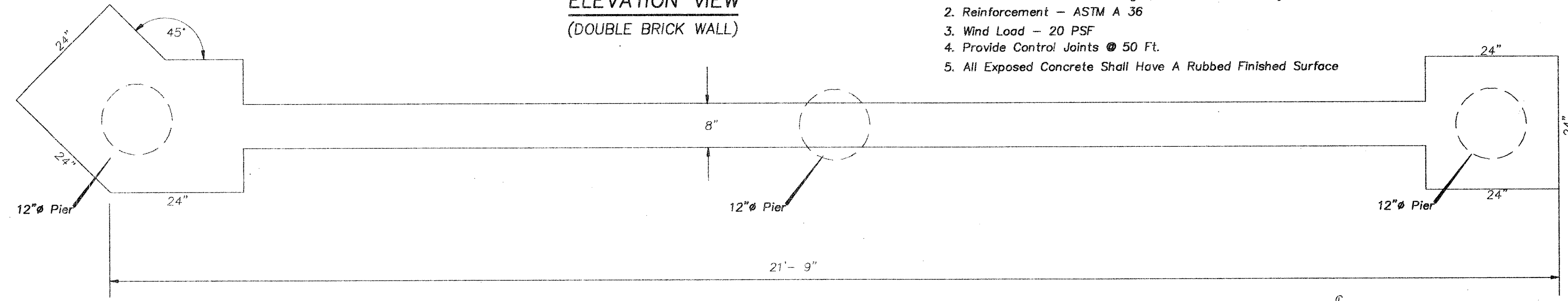
**ELEVATION VIEW**  
(DOUBLE BRICK WALL)

- NOTES:
1. Concrete - Minimum Strength, 3000 PSI @ 28 Days
  2. Reinforcement - ASTM A 36
  3. Wind Load - 20 PSF
  4. Provide Control Joints @ 50 Ft.
  5. All Exposed Concrete Shall Have A Rubbed Finished Surface

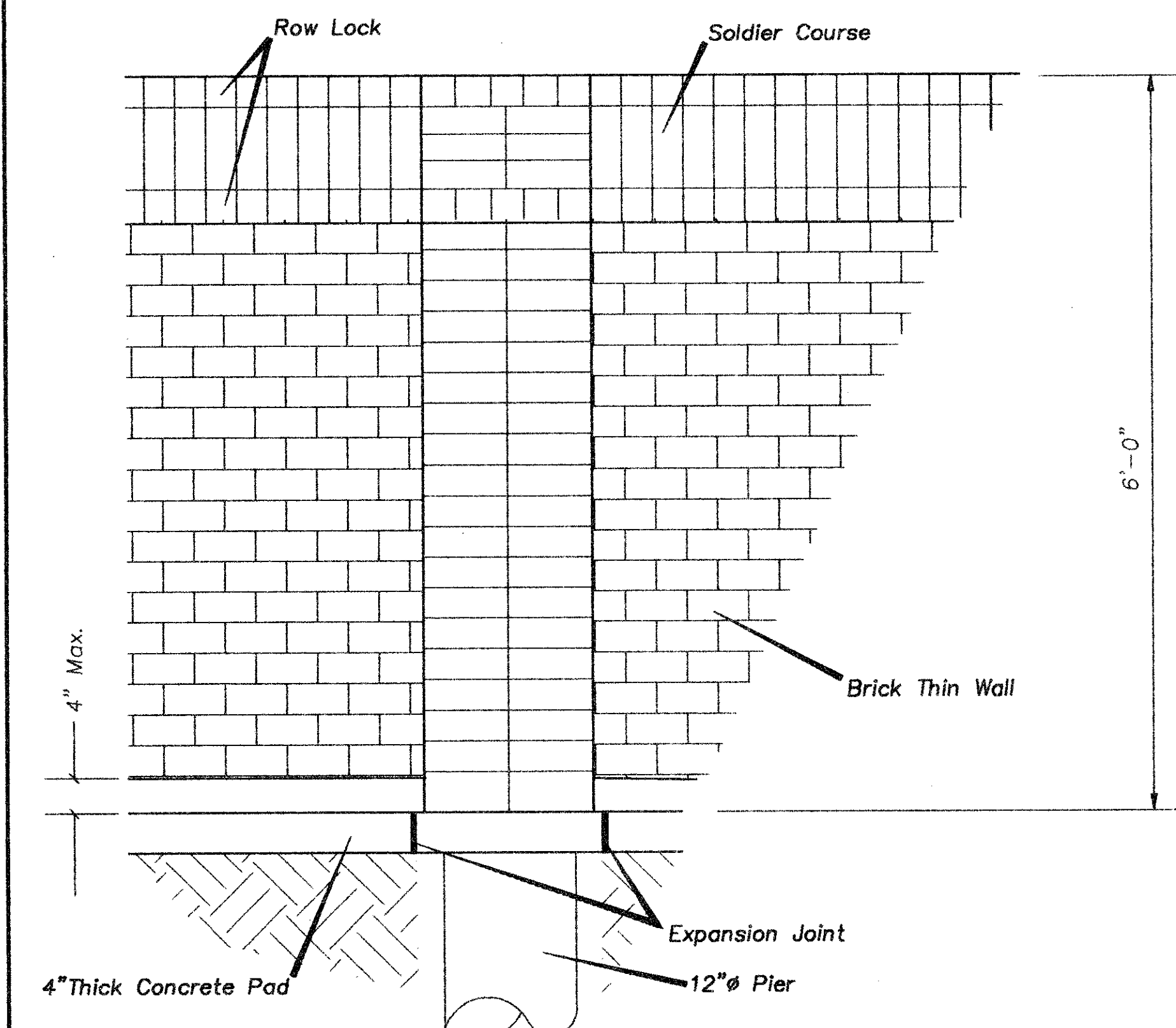


**SECTION "A-A"**

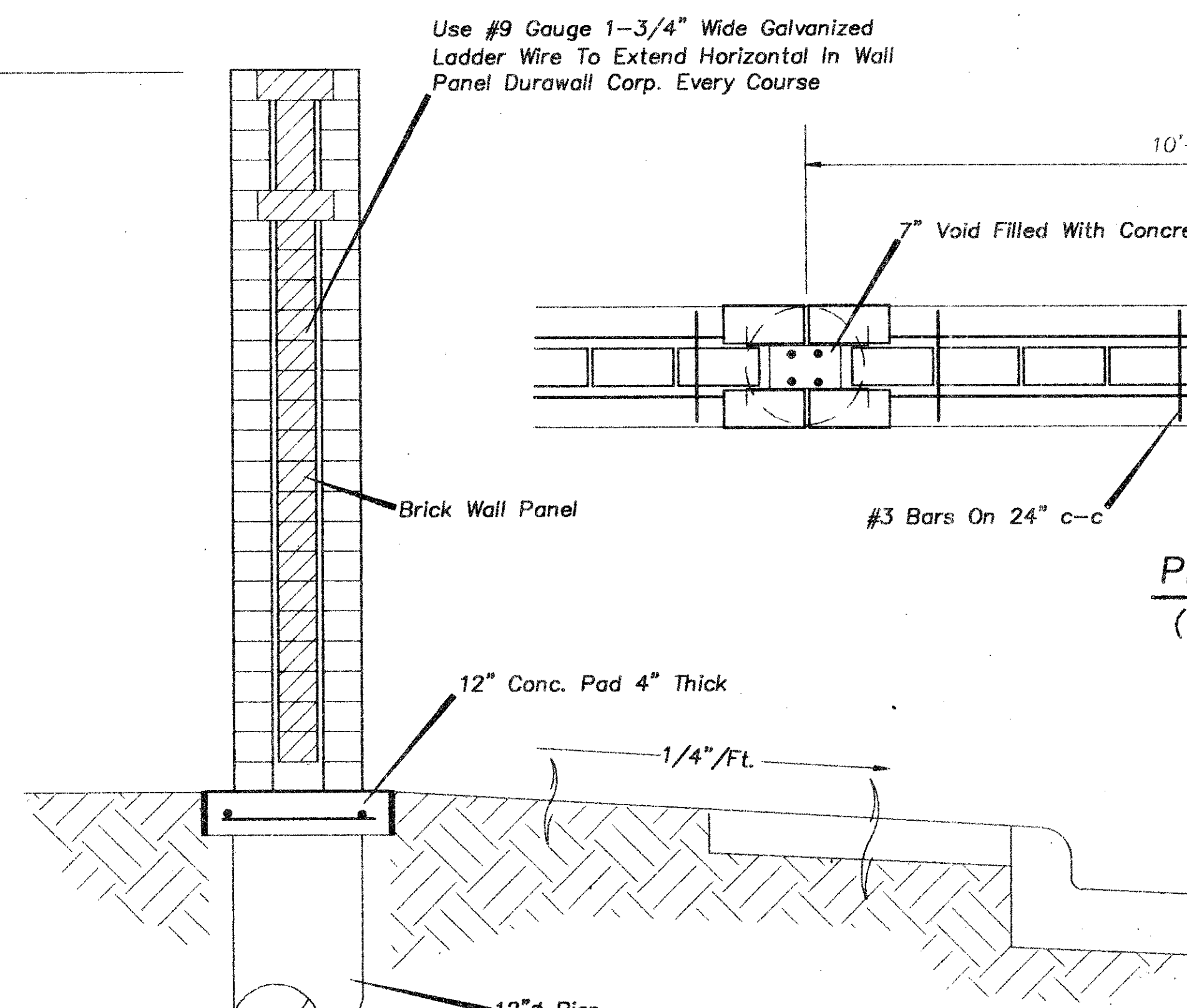
**COLUMN DETAIL**  
(DOUBLE BRICK WALL)



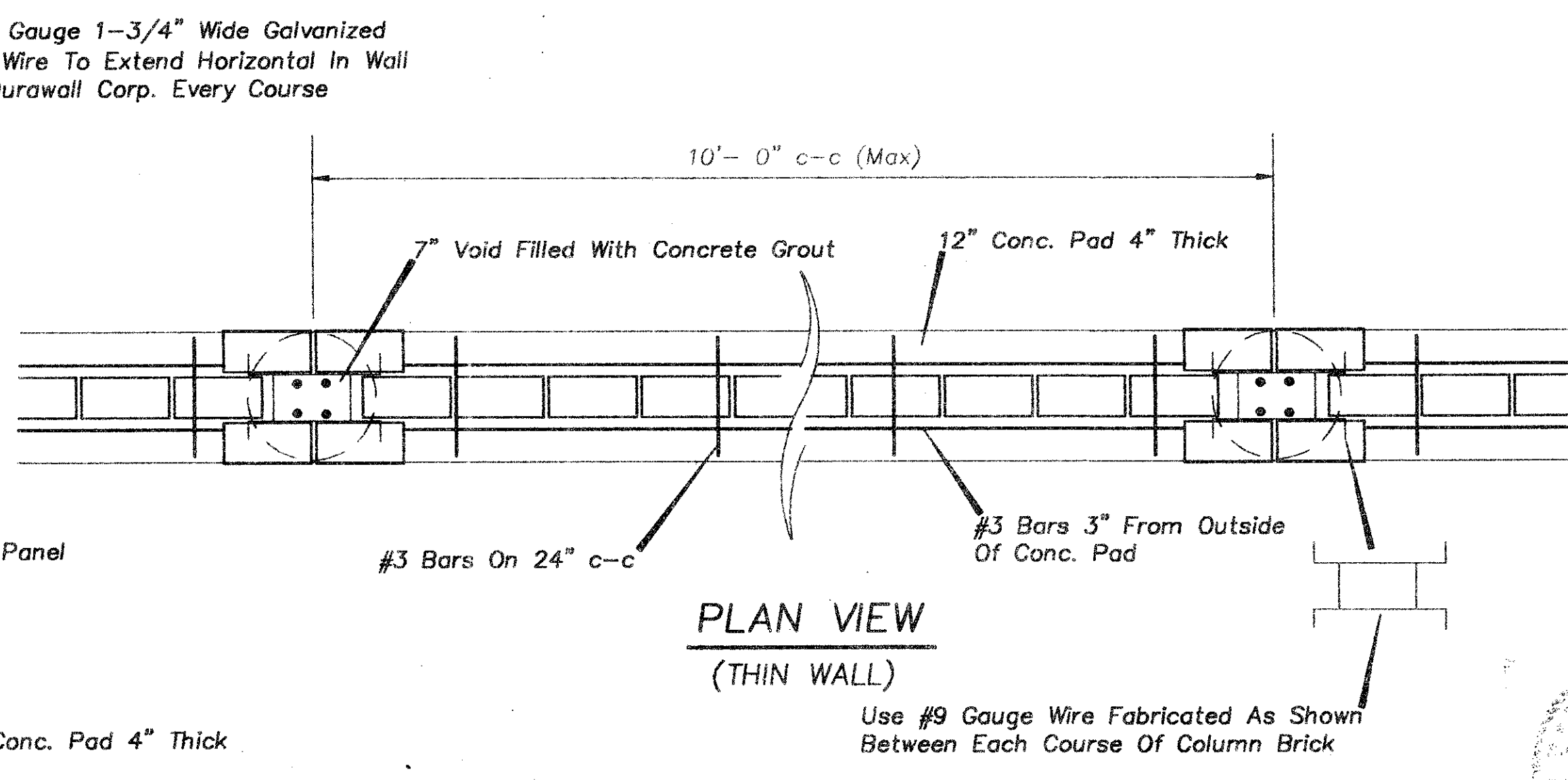
**GRADE BEAM**  
(DOUBLE BRICK WALL)



**ELEVATION VIEW**  
(THIN WALL)



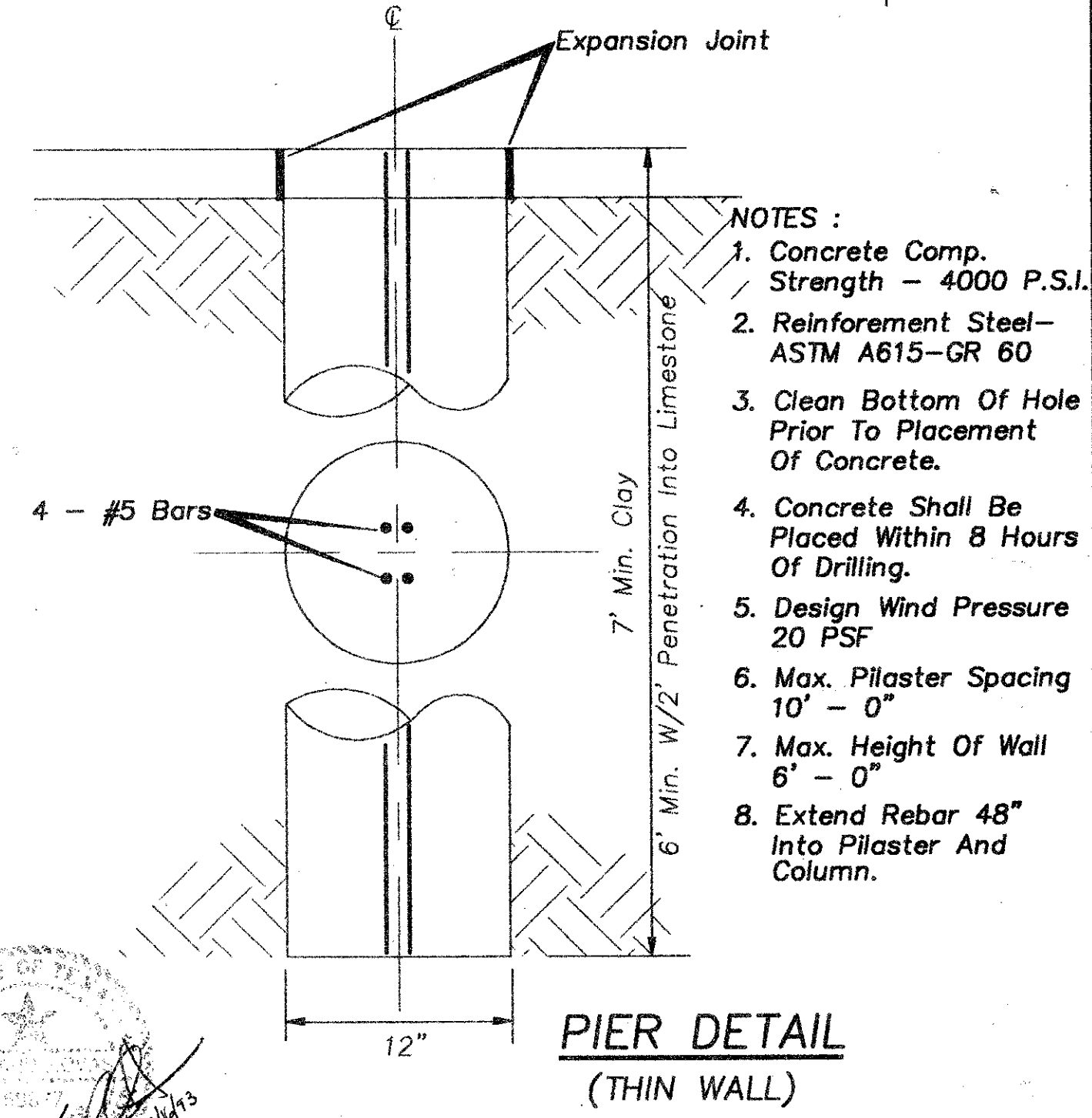
**COLUMN DETAIL**  
(THIN WALL)



**PLAN VIEW**  
(THIN WALL)

Use #9 Gauge Wire Fabricated As Shown Between Each Course Of Column Brick

- NOTES:
1. Concrete - Minimum Compressive Strength, 4000 PSI @ 28 Days
  2. Reinforcing Steel Shall Be New Billet Steel Conforming To The Requirements of ASTM A - 615 - GR.60.
  3. Mortar Shall Be Type "S"
  4. Construction Shall Be In Accordance With The Requirements Of The "Recommended Practice For Engineered Brick Masonry" - Brick Of America.



**PIER DETAIL**  
(THIN WALL)

- NOTES:
1. Concrete Comp. Strength - 4000 P.S.I.
  2. Reinforcement Steel - ASTM A615-GR 60
  3. Clean Bottom Of Hole Prior To Placement Of Concrete.
  4. Concrete Shall Be Placed Within 8 Hours Of Drilling.
  5. Design Wind Pressure 20 PSF
  6. Max. Pilaster Spacing 10' - 0"
  7. Max. Height Of Wall 6' - 0"
  8. Extend Rebar 48" Into Pilaster And Column.

DETAIL SHEET						
GRAND ADDISON II						
Town of Addison, Dallas County, Texas						
TIPTON ENGINEERING, INC.						
6330 Belt Line Rd. ~ Suite C ~ Garland, Texas 75043						
DESIGN	DRAWN	DATE	SCALE	NOTES	FILE	NO.
T.E. Inc.	g.d.	12/92	1"=1'		#3726	5