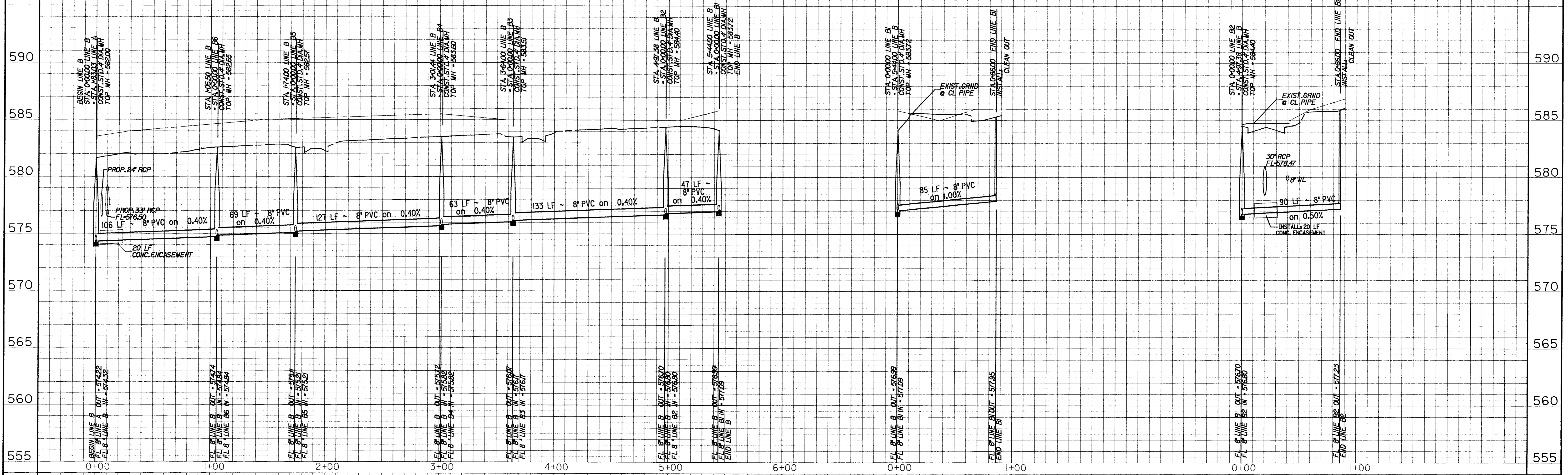


SANITARY SEWER LINE B

SANITARY SEWER LINE B1

SANITARY SEWER LINE B2

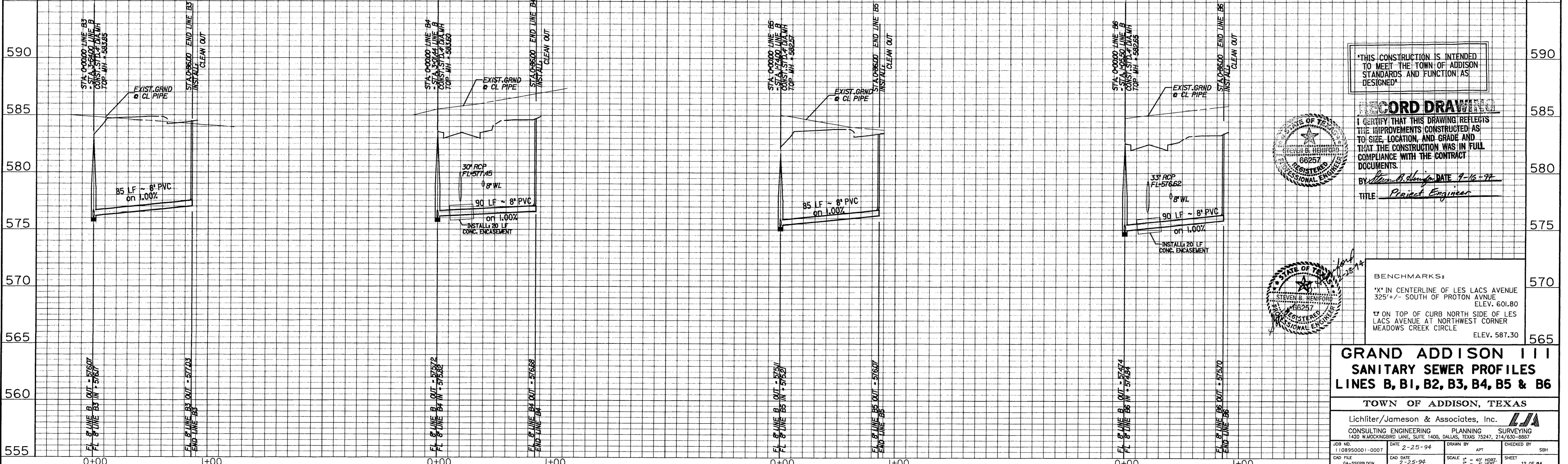


SANITARY SEWER LINE B3

SANITARY SEWER LINE B4

SANITARY SEWER LINE B5

SANITARY SEWER LINE B6

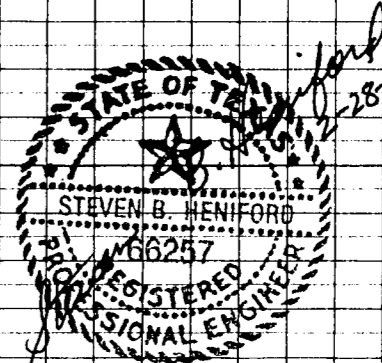
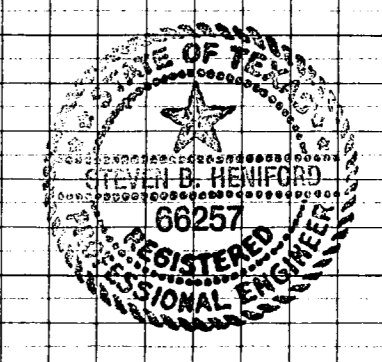


THIS CONSTRUCTION IS INTENDED TO MEET THE TOWN OF ADDISON STANDARDS AND FUNCTION AS DESIGNED

RECORD DRAWING

I CERTIFY THAT THIS DRAWING REFLECTS THE IMPROVEMENTS CONSTRUCTED AS TO SIZE, LOCATION, AND GRADE AND THAT THE CONSTRUCTION WAS IN FULL COMPLIANCE WITH THE CONTRACT DOCUMENTS.

BY Steven B. Henford DATE 7-16-94
TITLE Project Engineer



BENCHMARKS:
 * IN CENTERLINE OF LES LACS AVENUE 325' +/- SOUTH OF PROTON AVENUE ELEV. 601.80
 † ON TOP OF CURB NORTH SIDE OF LES LACS AVENUE AT NORTHWEST CORNER MEADOWS CREEK CIRCLE ELEV. 587.30

**GRAND ADDISON III
 SANITARY SEWER PROFILES
 LINES B, B1, B2, B3, B4, B5 & B6**

TOWN OF ADDISON, TEXAS

Lichter/Jameson & Associates, Inc. **LJA**
 CONSULTING ENGINEERING PLANNING SURVEYING
 1400 W. MCKINNEY BLVD., SUITE 1400, DALLAS, TEXAS 75247, 214/650-8857

JOB NO. 1108950001-0007	DATE 2-25-94	DRAWN BY APT	CHECKED BY SBH
CAD FILE GA-SSFPB.DGN	CAD DATE 2-25-94	SCALE HORIZ. 1" = 40' VERT. 1" = 4'	SHEET 12 OF 24