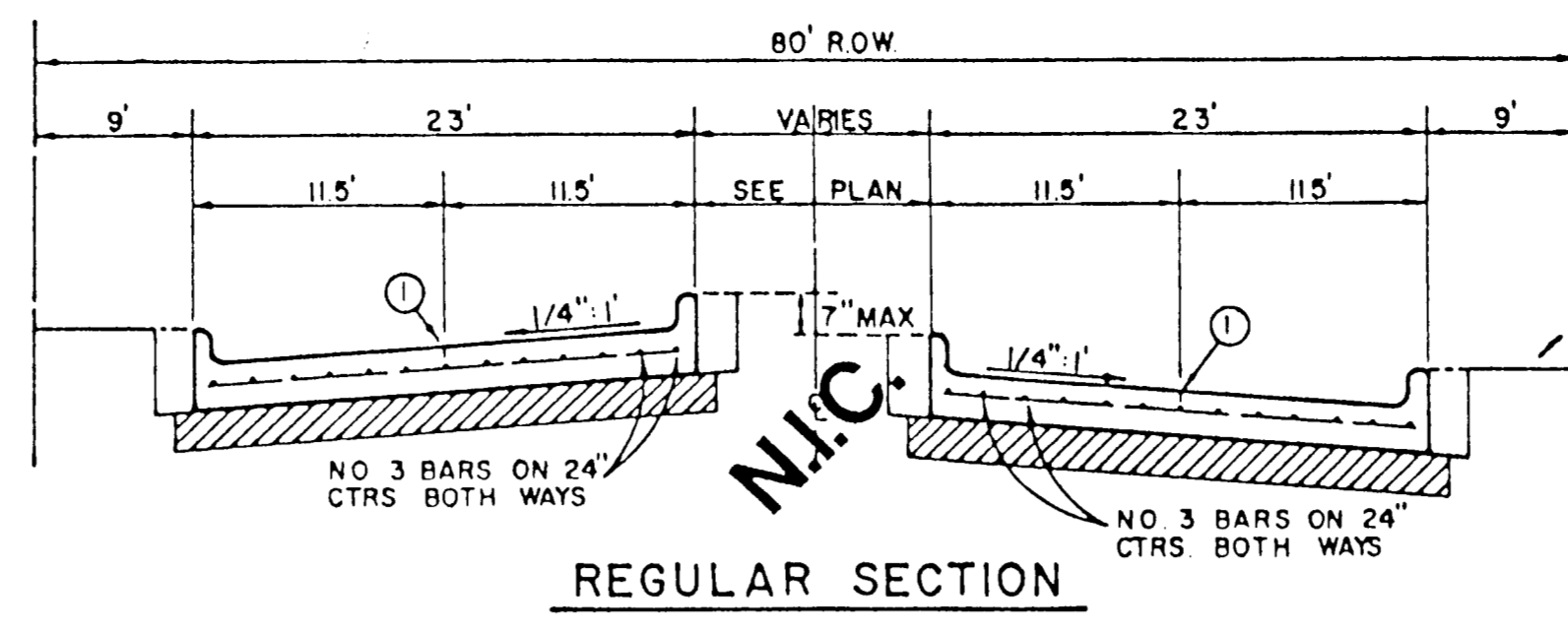
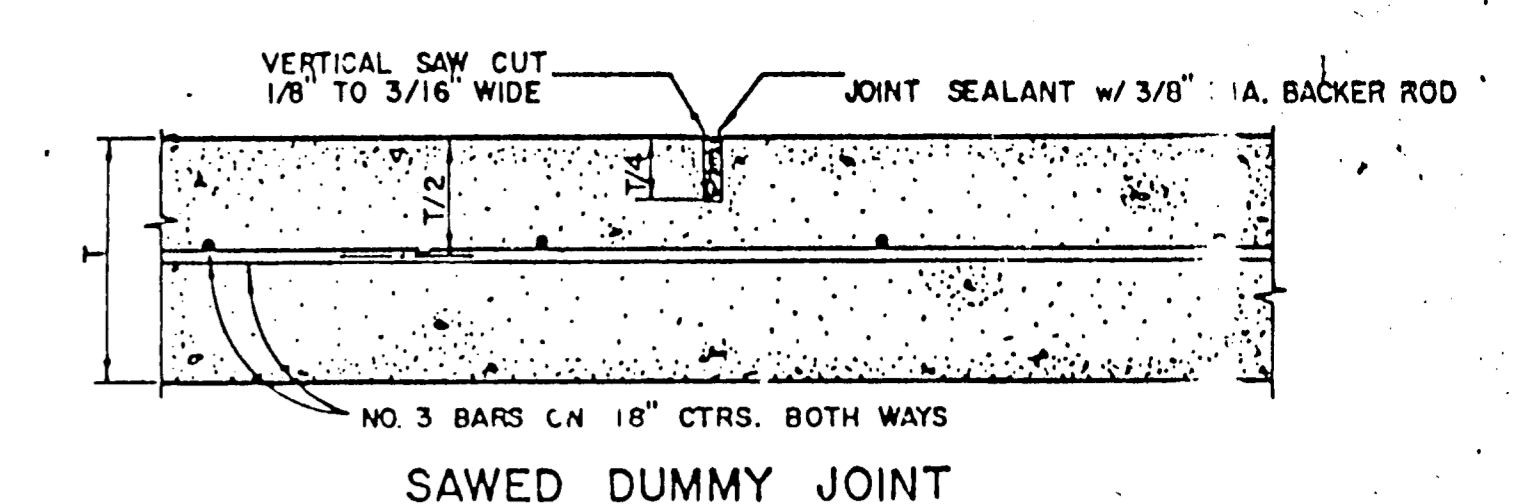


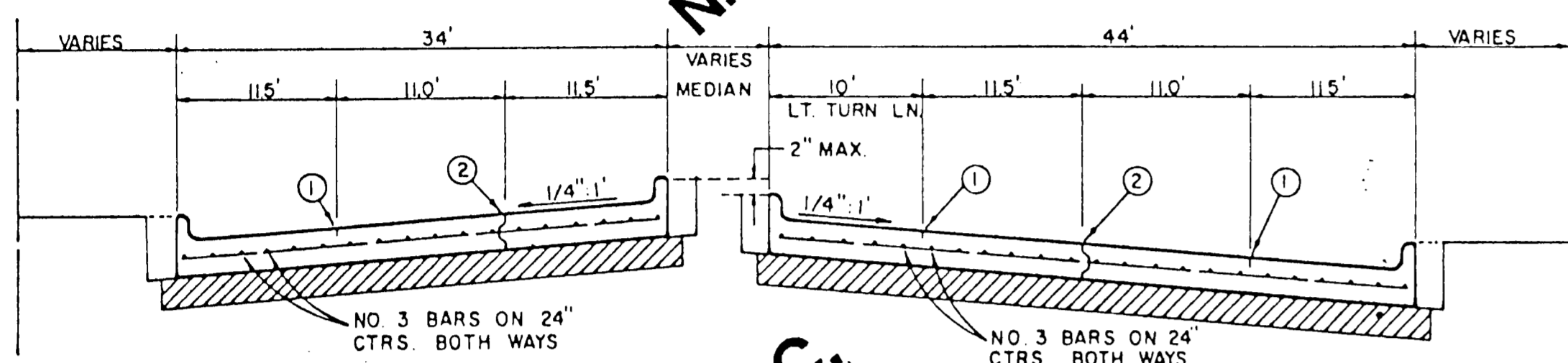
REGULAR SECTION



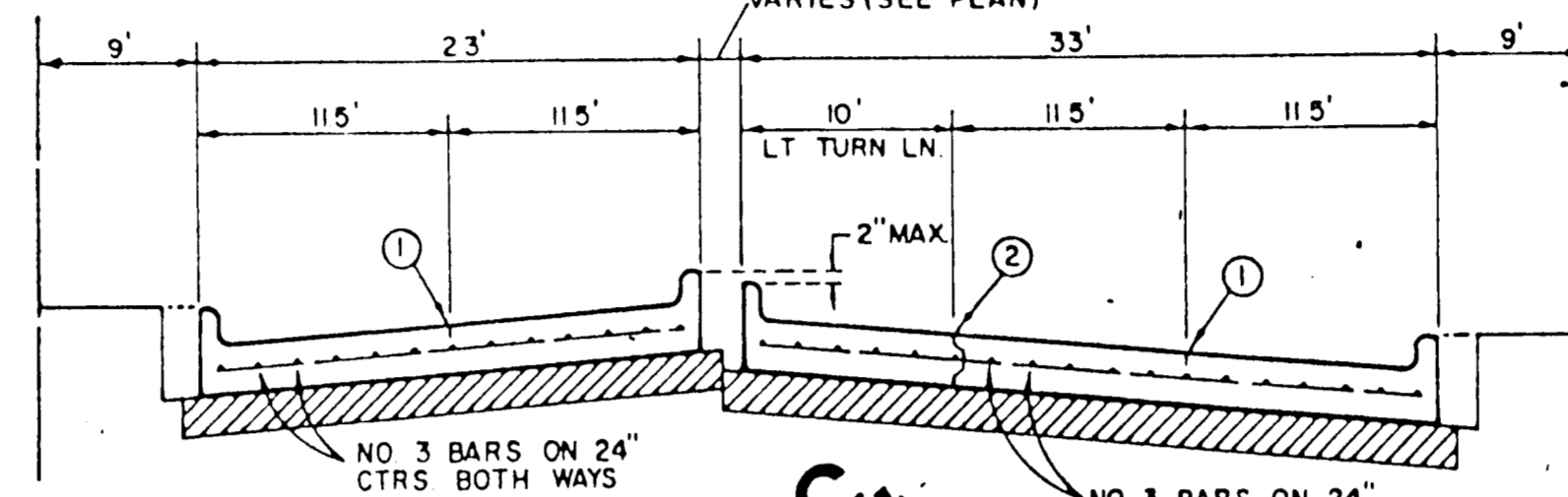
REGULAR SECTION



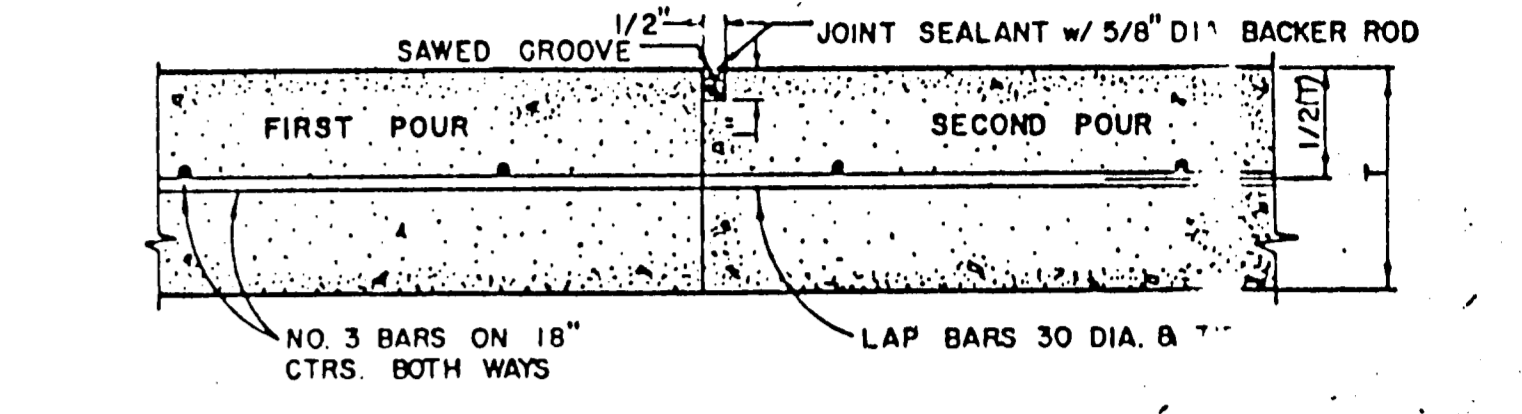
SAWED DUMMY JOINT



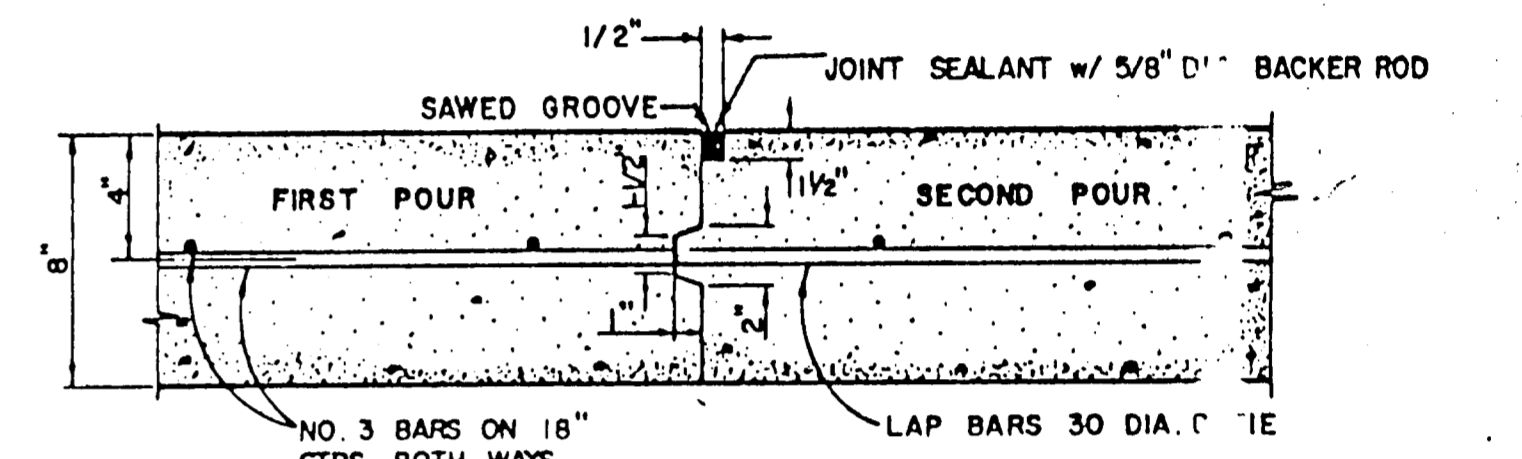
LEFT TURN SECTION
MAJOR ARTERIAL



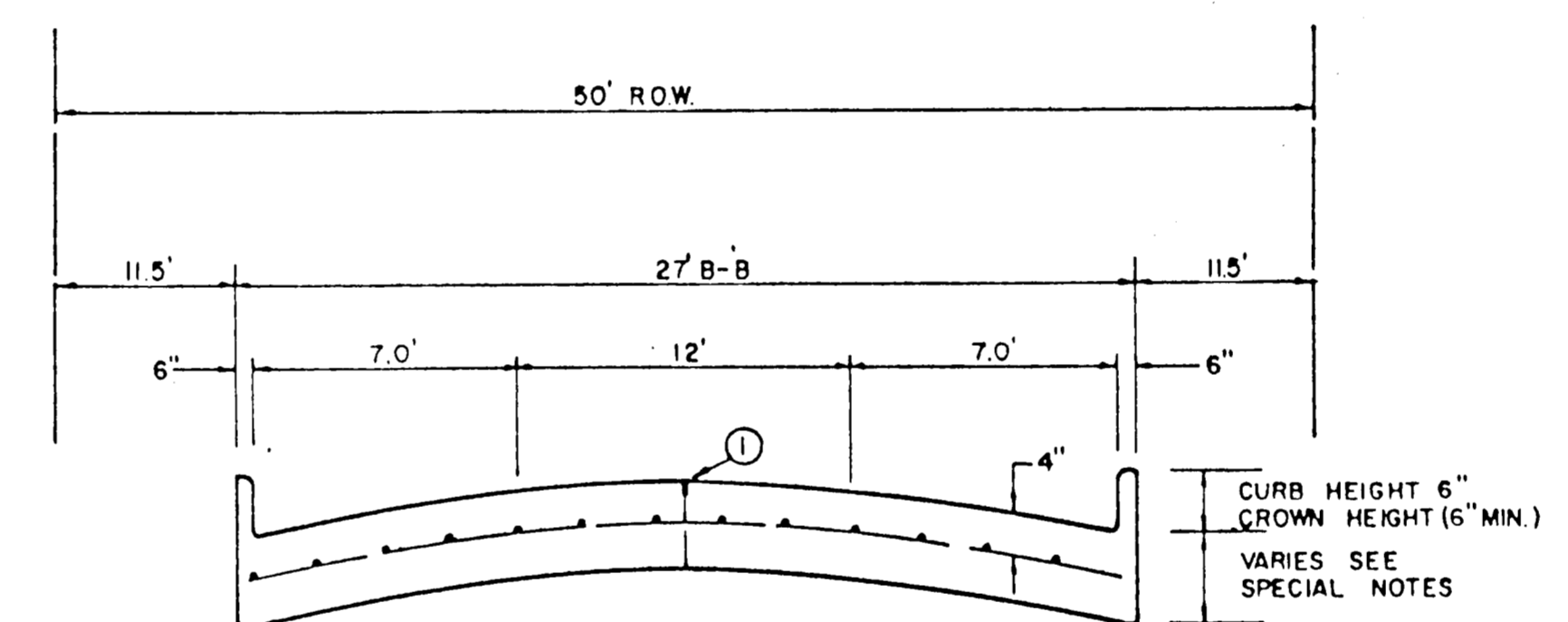
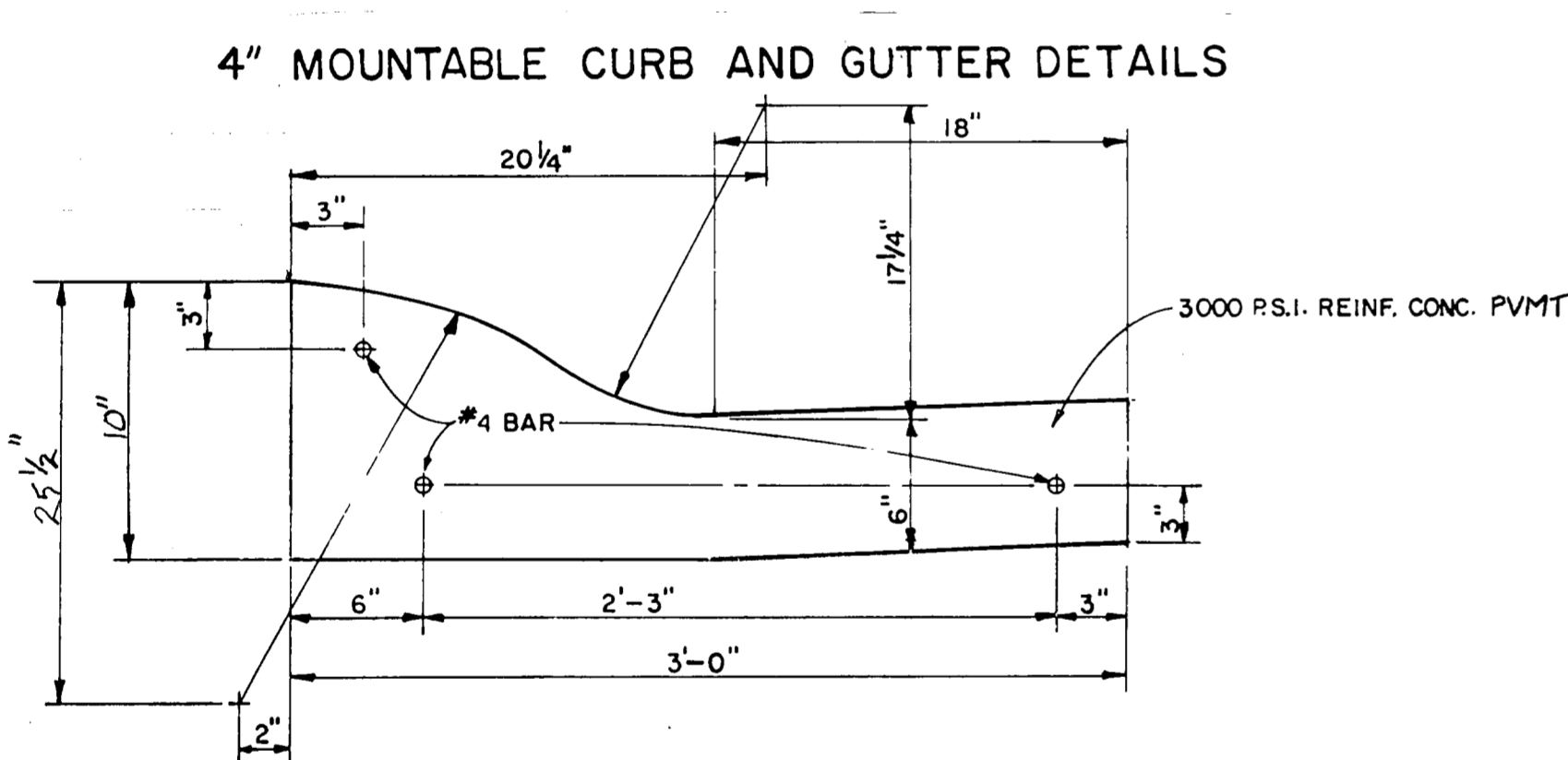
LEFT TURN SECTION
MINOR ARTERIAL



CONSTRUCTION JOINT FOR 6 INCH PAVEMENT



CONSTRUCTION JOINT FOR 8 INCH PAVEMENT



ONE MOVING LANE / TWO PARKING LANES
LOCAL STREET

GENERAL NOTES

- A. GENERAL PAVEMENT THICKNESS FOR STREETS SHALL BE AS SPECIFIED BELOW IN SPECIAL NOTES.
- B. STANDARD SPECIFICATIONS REINFORCED CONCRETE PAVEMENTS
- C. ALL CURBS SHALL BE PLACED INTEGRAL WITH PAVEMENT
- D. CURBS SHALL MEET THE SAME COMPRESSIVE STRENGTH AS SPECIFIED FOR THE CONCRETE PAVEMENT.
- E. DETAIL AND ARRANGEMENT OF JOINTS, ALL TYPES, SHALL BE AS SHOWN ON THE STANDARD CONSTRUCTION DETAILS, OR AS APPROVED BY ENGINEER.
- F. BAR LAPS SHALL BE 30 DIAMETERS.
- G. BAR CHAIRS OR AN APPROVED SUPPORTING DEVICE SHALL BE FURNISHED.

REINFORCED CONCRETE PAVEMENT

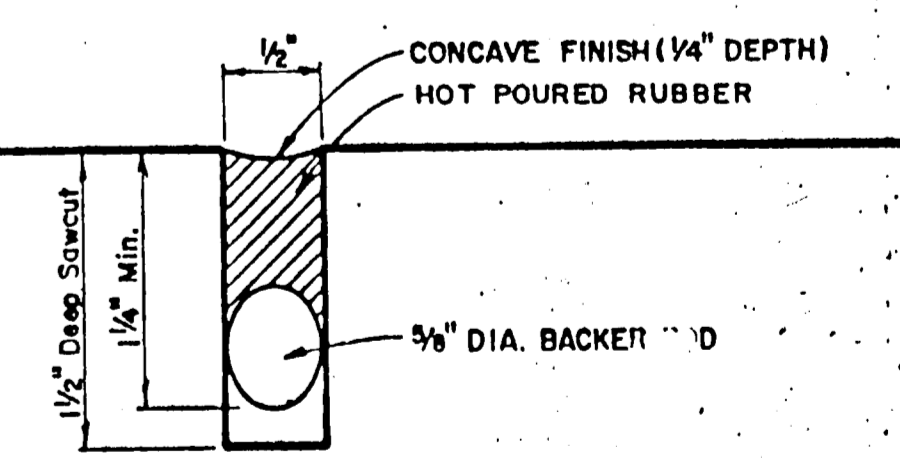
ALL REINFORCING BARS SHALL BE NO. 3 TRANSVERSE BARS TO BE SPACED ON 1'-6" CENTERS; LONGITUDINAL BARS TO BE SPACED ON 1'-6" EXCEPT WHERE NOTED.

UNDIVIDED STREETS-PROVIDE 4" DBL-REF YELLOW & BUTTON P-117-Y PATTERNS TO BE ESTABLISHED BY ENGINEER. SEE DETAIL SHEET

① SAWED LONGITUDINAL DUMMY JOINT.

② CONSTRUCTION JOINT (FULL WIDTH PVMT IS ALLOWED WHERE APPROVED BY ENGINEER.

③ FINISH SHALL BE TRANSVERSE WITH TRAFFIC LANES AND SHALL BE STEEL TINED BROOM FINISH.



TYPICAL JOINT DETAIL

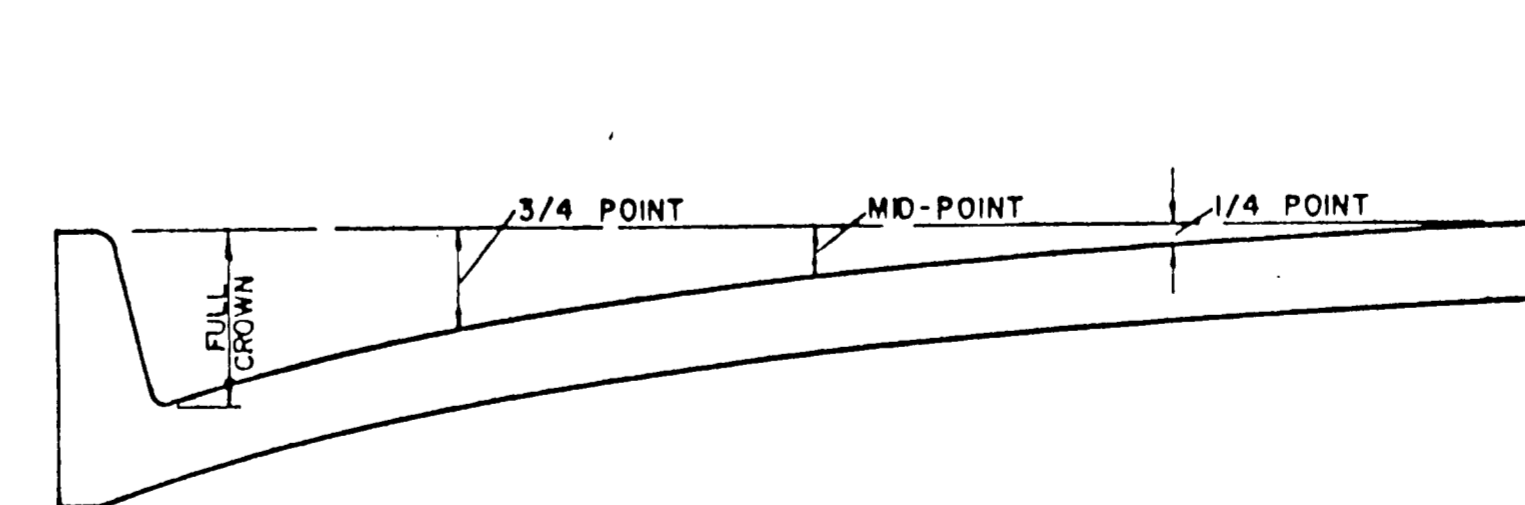
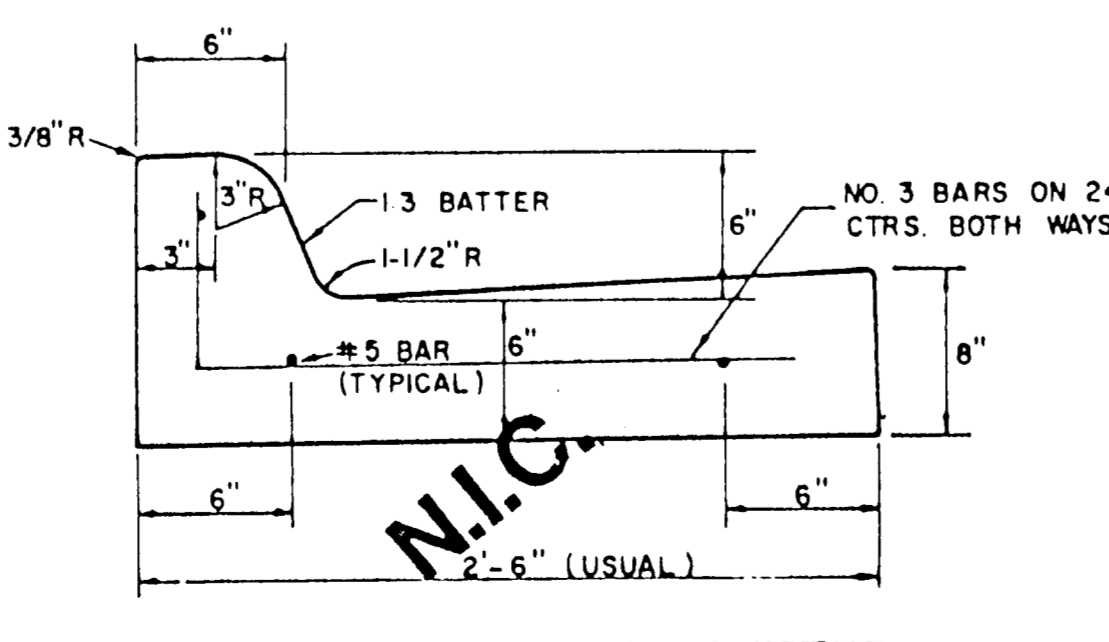
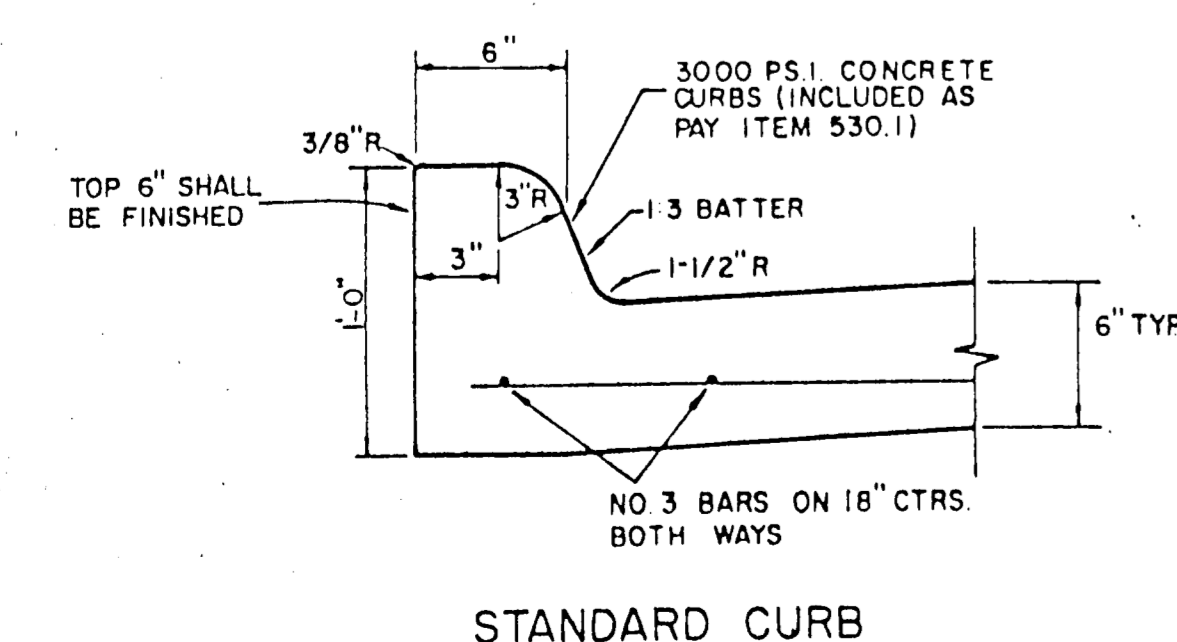


TABLE OF CROWN HEIGHTS AND ORDINATES FOR VARIOUS PARABOLIC SECTIONS



TOWN OF ADDISON, TEXAS
DEPARTMENT OF ENGINEERING

STANDARD CONSTRUCTION DETAILS
PAVING

STREET CROWNS & JOINTS

Designed - _____ Drawn - _____ Date - _____ Job No. - _____
Approved - _____ Checked - _____ Scale - _____ Sheet 15