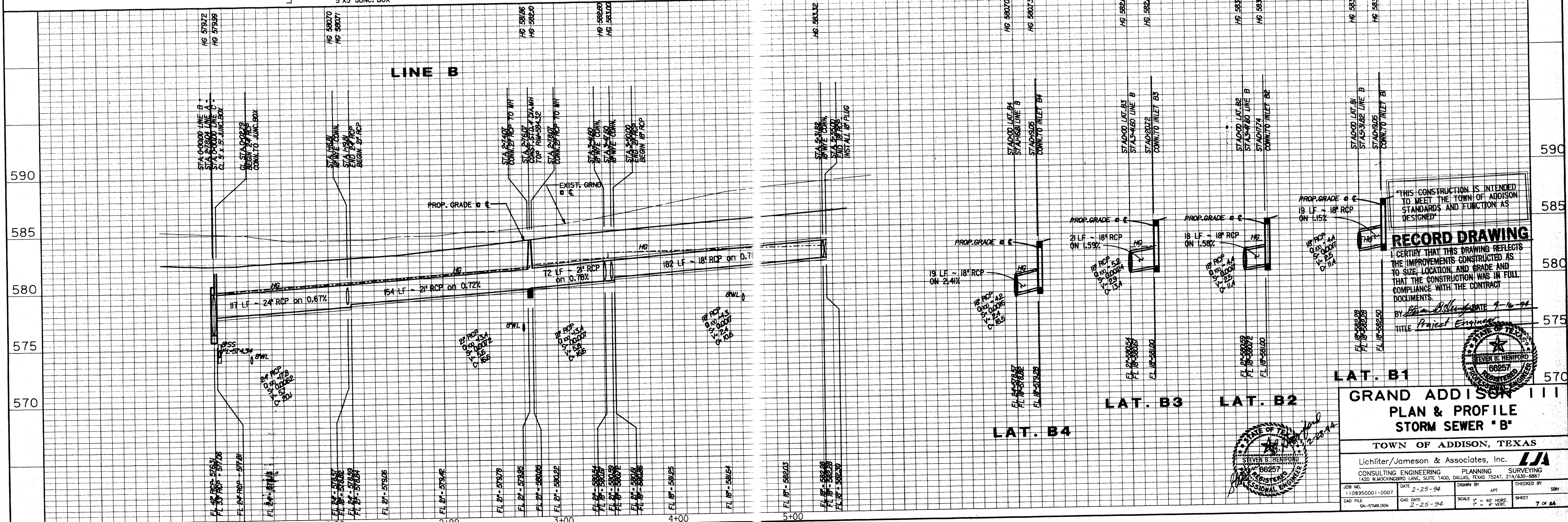


SEE SH. 19 FOR DRAINAGE DETAILS  
SEE SH. 6 FOR DRAINAGE GENERAL NOTES

STM. SEW. CURVE DATA 1	STM. SEW. CURVE DATA 2	STM. SEW. CURVE DATA 3
$\Delta = 08^{\circ}55'26''$	$\Delta = 42^{\circ}42'30''$	$\Delta = 42^{\circ}42'30''$
$R = 200.00'$	$R = 50.00'$	$R = 50.00'$
$T = 15.61'$	$T = 19.55'$	$T = 19.55'$
$L = 31.15'$	$L = 37.27'$	$L = 37.27'$

**BENCHMARKS:**  
 \*X' IN CENTERLINE OF LES LACS AVENUE  
 325'+/- SOUTH OF PROTON AVENUE  
 ELEV. 601.80  
 † ON TOP OF CURB NORTH SIDE OF LES LACS AVENUE AT NORTHWEST CORNER MEADOWS CREEK CIRCLE  
 ELEV. 587.30



THIS CONSTRUCTION IS INTENDED TO MEET THE TOWN OF ADDISON STANDARDS AND FUNCTION AS DESIGNED.

**RECORD DRAWING**

I CERTIFY THAT THIS DRAWING REFLECTS THE IMPROVEMENTS CONSTRUCTED AS TO SIZE, LOCATION, AND GRADE AND THAT THE CONSTRUCTION WAS IN FULL COMPLIANCE WITH THE CONTRACT DOCUMENTS.

BY: *[Signature]* DATE: 9-16-94  
 TITLE: Project Engineer

**SEVER B. HENNING**  
 66257  
 PROFESSIONAL ENGINEER

**LAT. B1**

**GRAND ADDISON III**  
**PLAN & PROFILE**  
**STORM SEWER 'B'**

TOWN OF ADDISON, TEXAS

Lichter/Jameson & Associates, Inc. **LJA**  
 CONSULTING ENGINEERING PLANNING SURVEYING  
 1420 W. MOCKINGBIRD LANE, SUITE 1400, DALLAS, TEXAS 75247, 214/650-8887

JOB NO. 1108950001-0007 DATE 2-25-94 DRAWN BY APT CHECKED BY SBH  
 CAD FILE DA-STMBLDN CAD DATE 2-25-94 SCALE 1" = 40' HORIZ. SHEET 7 OF 24  
 1" = 4' VERT.