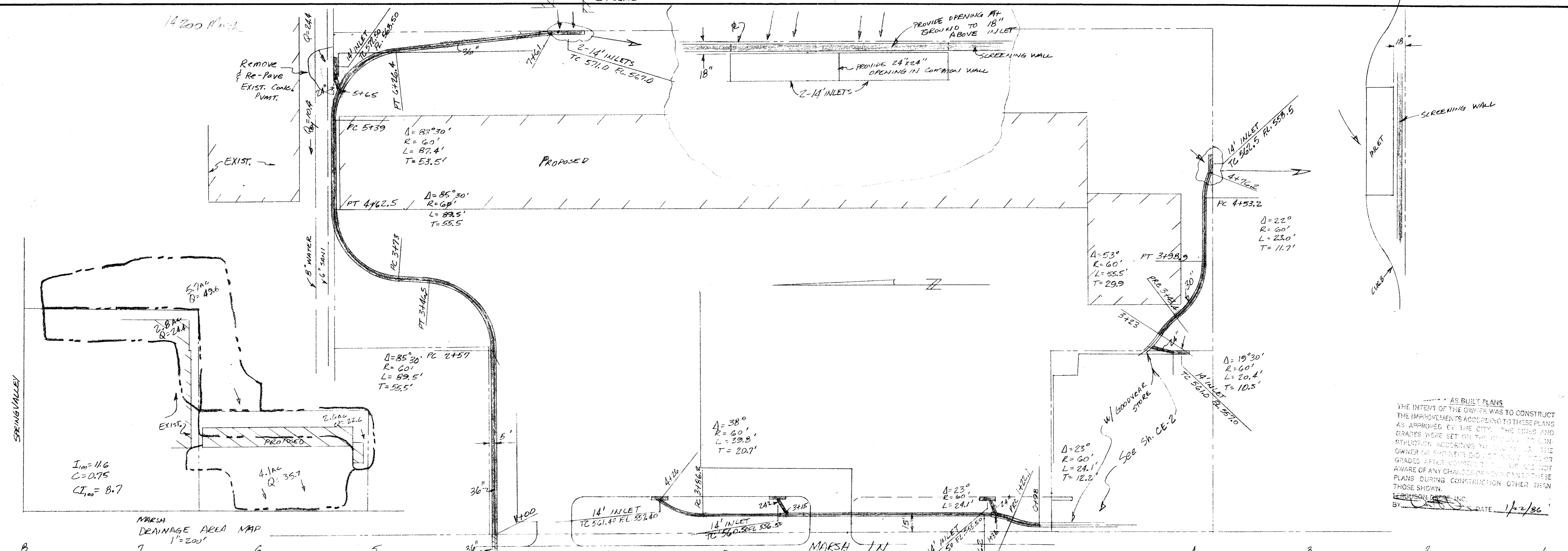
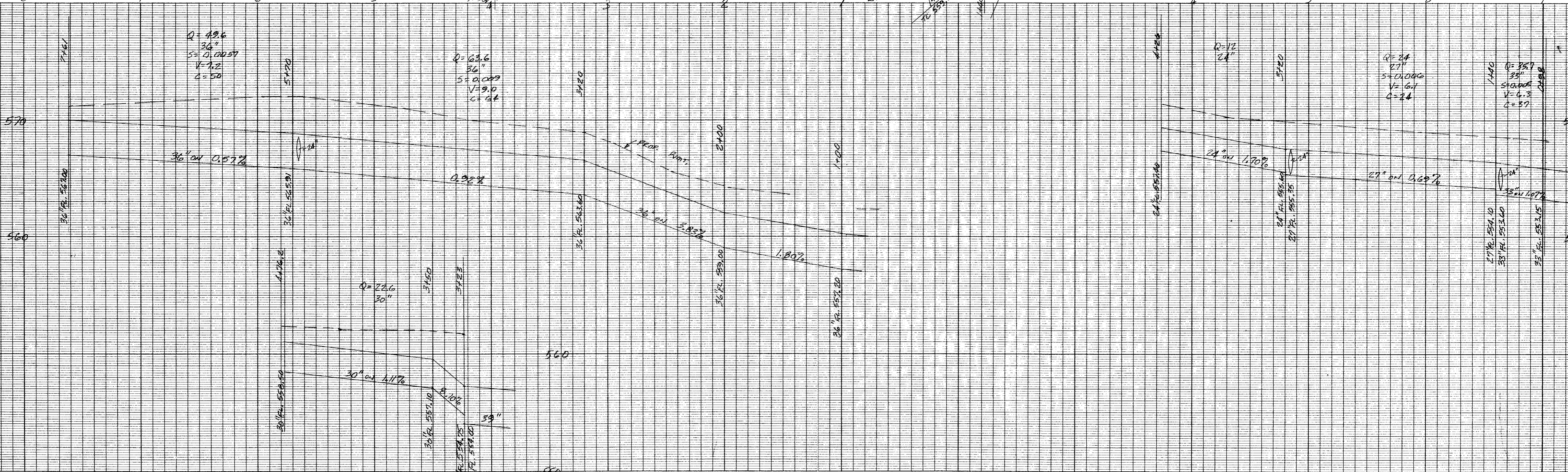


14200 Marsh



AS BUILT PLANS  
 THE INTENT OF THE OWNER WAS TO CONSTRUCT THE IMPROVEMENTS ACCORDING TO THESE PLANS AS APPROVED BY THE CITY. THE LINES AND GRADES WERE SET ON THE PROJECT BY CONSTRUCTION ACCORDING TO THE CITY. THE OWNER HAS BEEN ADVISED THAT THE CITY OR GRADES AFTER CONSTRUCTION. WE ARE NOT AWARE OF ANY CHANGES TO THESE PLANS DURING CONSTRUCTION OTHER THAN THOSE SHOWN.  
 FERGUSON-DEERE, INC.  
 DATE 1/2/86

MARSH DRAINAGE AREA MAP  
 1"=200'



REVISED BY	DATE	COMMENT
DND	4/18/85	REV. INLET @ 1446 on Marsh
DAD	4/18/85	MOVE INLETS @ SCREENING WALL
DND	3/20/85	PARKING REEL - LANDSCAPING

FERGUSON-DEERE, INC.  
 CONSULTING ENGINEERS  
 9817 KINGSLEY ROAD  
 DALLAS, TEXAS  
 75238  
 PHONE 348-2821  
 DATE

DRAINAGE PLANS  
 GREENHAVEN VILLAGE

SCALE  
 H-1"=40'  
 V-1"=4'  
 SHEET NO.  
 CE/3

TYPING FOOT