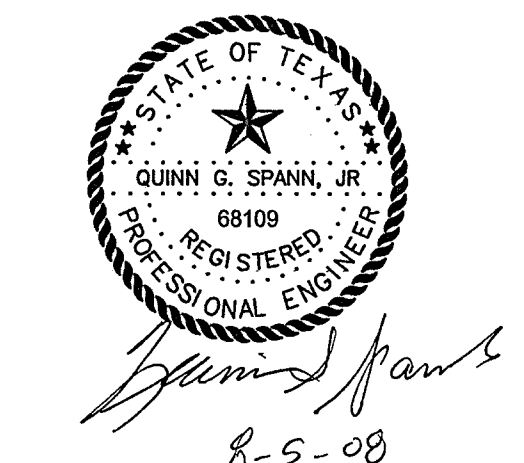
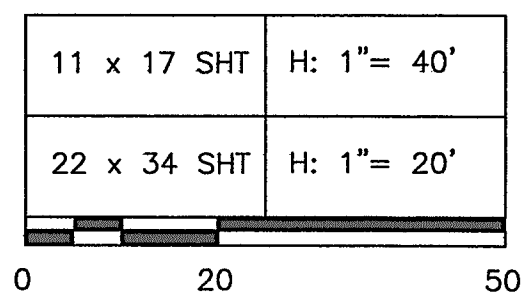


**LEGEND**

- CV = CHECK VALVE
- DE = DRAINAGE EASEMENT
- EA = EDGE ASPHALT
- EC = EDGE CONCRETE
- FH = FIRE HYDRANT
- GM = GAS METER
- LP = LIGHT POLE
- OHE = OVERHEAD ELECTRIC
- PP = POWER POLE
- SH = SPRINKLER HEAD
- SS = SANITARY SEWER
- SSCO = SANITARY SEWER CLEANOUT
- SV = SPRINKLER VALVE
- TEL = TELEPHONE STRUCTURE
- TMK = TELEPHONE STRUCTURE
- TP = TOP OF PAVEMENT
- UE = UTILITY EASEMENT
- UG-E = UNDERGROUND ELECTRIC
- UG-T = UNDERGROUND TELEPHONE
- W = WATER
- = PROPOSED WATER MAIN

= PAVEMENT REPLACEMENT WITH 8" 4000 PSI REIN. CONCRETE  
 = SIDEWALK REPLACEMENT WITH 6" 3000 PSI REIN. CONCRETE  
 = EXISTING WATER VALVE



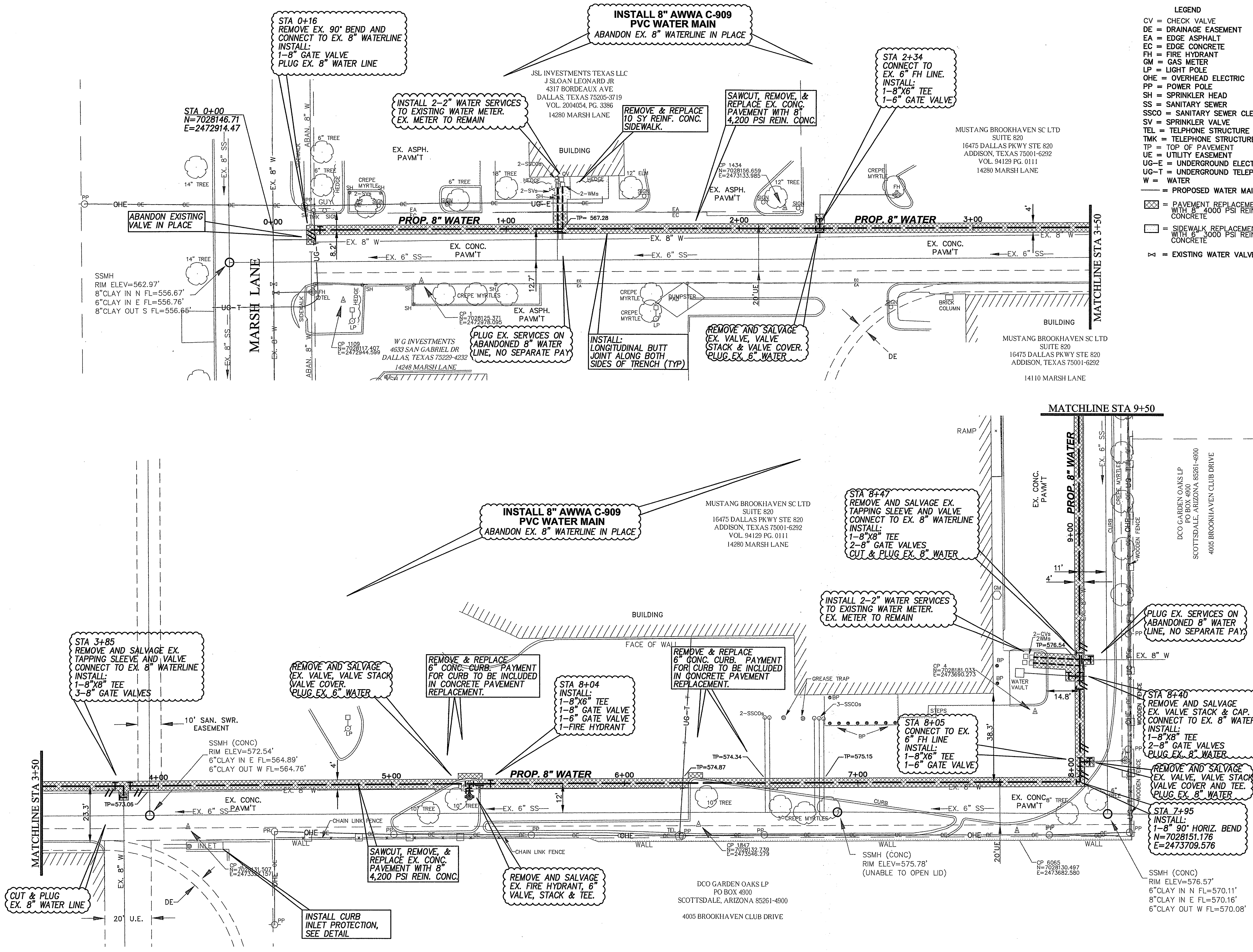
**CAUTION !!**  
EXISTING GAS SERVICE ARE PRESENT, LOCATION NOT KNOWN.

**NOTICE !!**  
THE CONTRACTOR SHALL PRESERVE AND PROTECT EXISTING DRIVEWAYS AT ALL TIMES DURING CONSTRUCTION.

**NOTICE !!**  
THE CONTRACTOR SHALL MAINTAIN WATER SERVICE AT ALL TIMES DURING CONSTRUCTION.

**NOTICE !!**  
THE CONTRACTOR SHALL TAKE THE NECESSARY PRECAUTIONS TO PROTECT ALL OVERHEAD UTILITIES FROM DAMAGE. REPAIR OF DAMAGED UTILITIES WILL BE AT CONTRACTOR'S OWN EXPENSE.

- BENCHMARKS:**
- CP 1 = "X" SET IN THE SOUTH SIDE OF A CONCRETE DRIVE 55 FEET EAST FROM THE CURB OF MARSH LANE, 39.4 FEET NORTH OF THE NORTH FACE OF THE BURGER HOUSE BUILDING AT 14248 MARSH LANE. ELEV.= 565.46
  - CP 3 = "X" SET IN THE SOUTH SIDE OF A CONCRETE DRIVE 404 FEET EAST FROM THE CURB OF MARSH LANE, 17 FEET EAST FROM A SANITARY SEWER MAN HOLE, 8 FEET NORTH OF AN INLET RIM. ELEV.=572.39
  - CP 4 = "X" SET IN THE CONCRETE PAVING AT THE SOUTHEAST CORNER OF 14280 MARSH LANE, 19.2 FEET SOUTHWEST FROM THE SOUTHWEST BUILDING CORNER, 17.7 FEET SOUTH FROM A WATER VAULT. ELEV.= 576.44
  - CP 5 = "X" SET IN THE EAST SIDE OF A CONCRETE DRIVE 300 FEET SOUTH FROM THE SOUTH BACK OF CURB OF SPRING VALLEY DRIVE, 7.5 FEET WEST FROM THE EAST EDGE OF PAVING. ELEV.=581.81
  - CP 6 = "X" SET IN THE NORTH WALK OF SPRING VALLEY BOULEVARD NORTH OF ITS INTERSECTION WITH A CONCRETE DRIVE BETWEEN 3900 SPRING VALLEY ROAD AND 14280 MARSH LANE, 17.9 FEET SOUTHWEST FROM A POWER POLE, 3.2 FEET NORTH OF THE NORTH BACK OF CURB OF SPRING VALLEY ROAD. ELEV.=586.26



REVISION NO.	DESCRIPTION	BY	DATE

**TOWN OF ADDISON, TEXAS**  
PUBLIC WORKS DEPT. - ENGINEERING DIVISION

**GREENHAVEN WATERLINE RECONSTRUCTION**

**WATER PLAN**  
STA 0+00 TO STA 9+50

**GSWW, Inc.**  
DALLAS, TX • FORT WORTH, TX • HOUSTON, TX • AUSTIN, TX  
IRVING, TX • SAN ANTONIO, TX • SAN MARCOS, TX  
DALLAS - Fort Worth - Midland - Austin

DESIGN: GSWW	SCALE: AS NOTED
DRAWN: GSWW	SHEET
APPROVED: QGS	4 OF 5
DATE: AUGUST 2008	