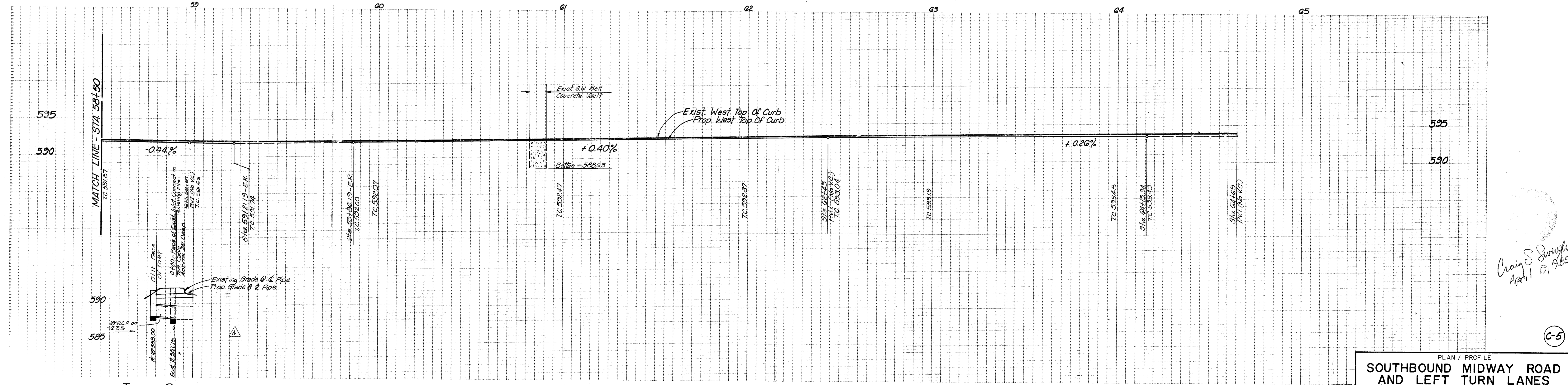


Note: All Dimensions Are To Face Of Curb
 See Sheet C-4 For Street Typical Section.

- | DESCRIPTION | REVISION |
|---|----------|
| 1. Found "□" on the southwest corner of the Greenhill School brick sign, standing on the northwest corner of the Spring Valley Road and Midway Road intersection. | 586.16 |
| 2. Found "□" in center of west headwall of triple 7' x 4' box culvert under Midway Road, approximately 115 feet south of Greenhill Park northwest corner. | 589.72 |



Craig S. Stroupe
 April 19, 1985

PLAN / PROFILE
SOUTHBOUND MIDWAY ROAD AND LEFT TURN LANES
 ALBERT H. HALFF ASSOCIATES, INC.
 ENGINEERS & SCIENTISTS

| DESIGN | DRAWN | DATE | SCALE | NOTES | FILE | NO. |
|--------|-------|--------|------------|-------|------|-----|
| C.S.S. | B.M. | MAR 85 | 1/4" = 20' | | | |

AVO. 7785

PHASE ONE
GREENHILL PARK
 FOR THE TRAMMELL CROW COMPANY
 ADDISON, TEXAS