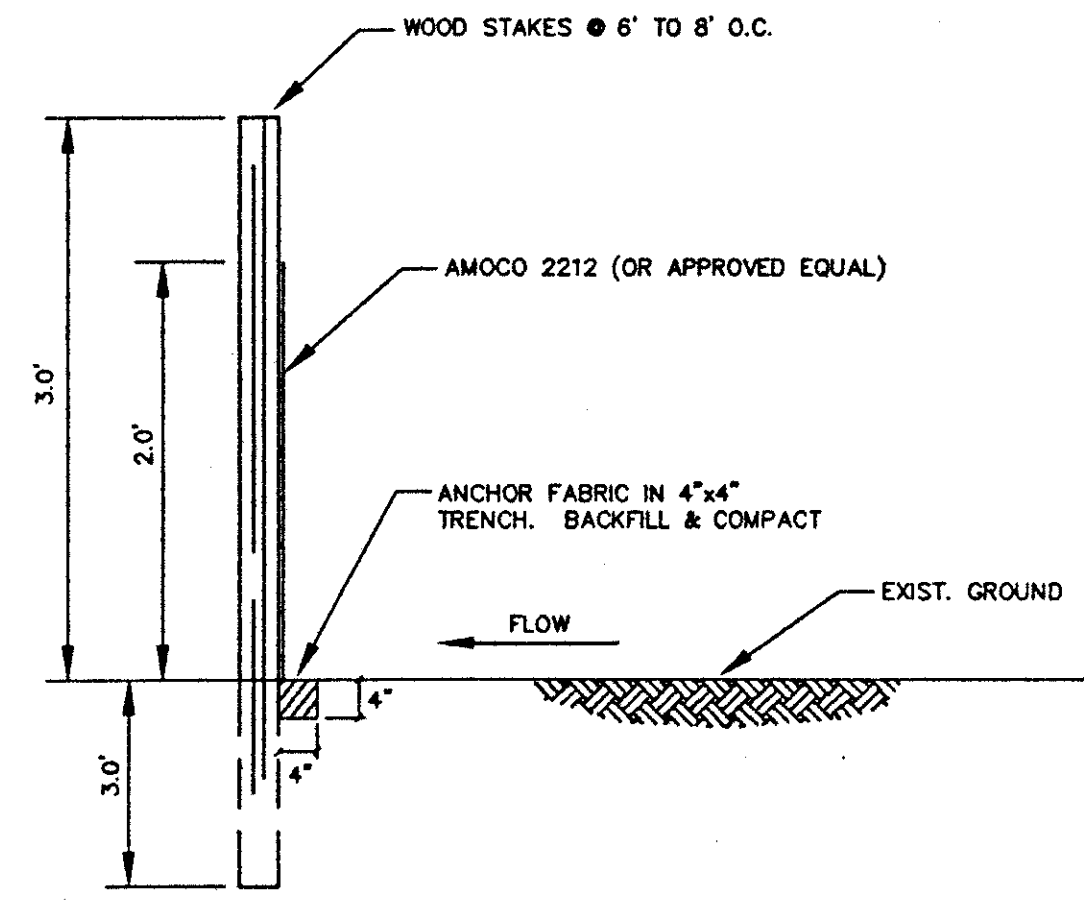
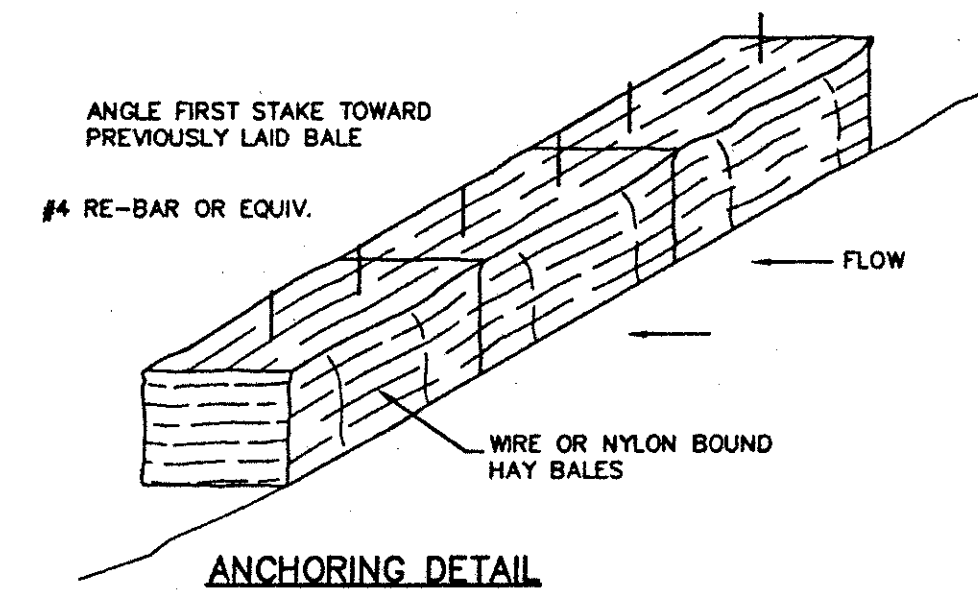
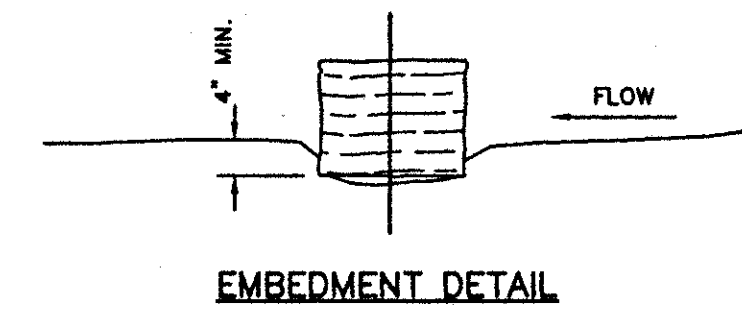


HIGH FLOW SILT FENCE DETAIL:
TYPICAL TEMPORARY FILTER FABRIC WITH WIRE FABRIC
N.T.S.

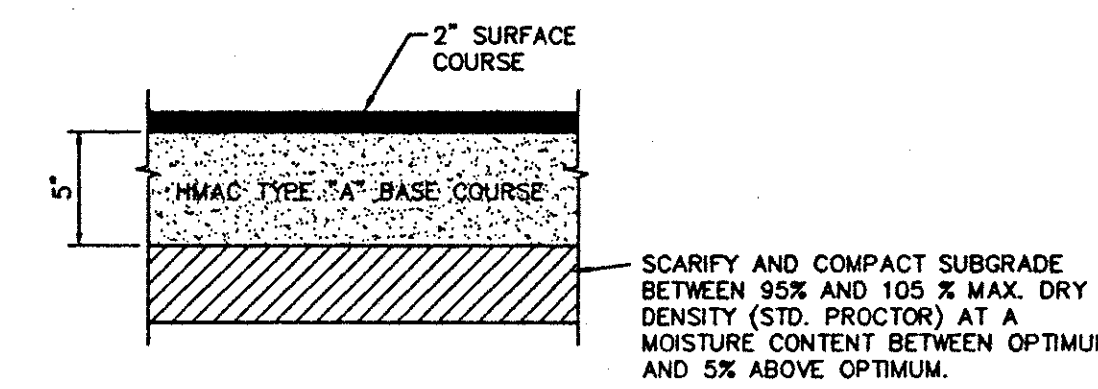


LOW FLOW SILT FENCE DETAIL:
TYPICAL TEMPORARY FILTER FABRIC WITHOUT WIRE FABRIC
N.T.S.

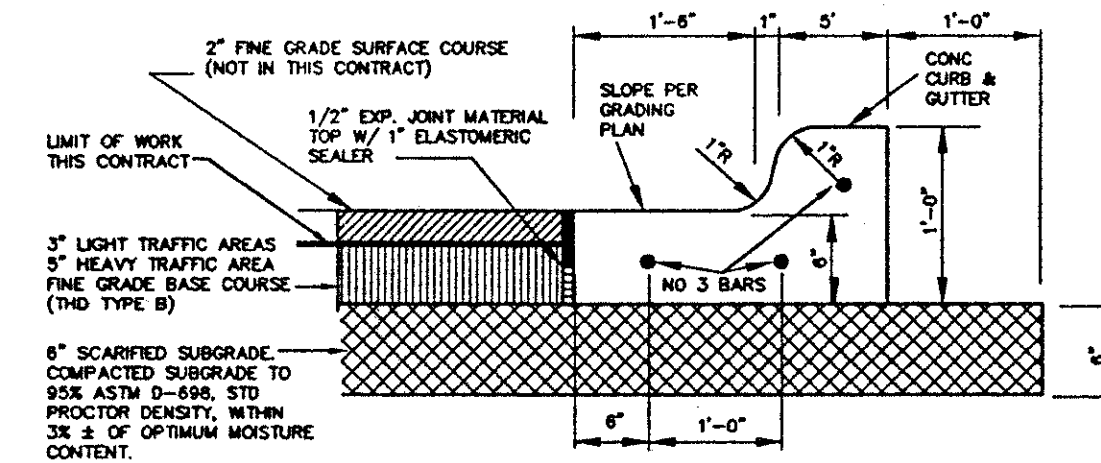


- EROSION CONTROL DETAIL:**
1. DURING THE CONSTRUCTION PERIOD, THE CONTRACTOR SHALL PROVIDE AND MAINTAIN HAY BALE CHECK DAMS PER THE DETAIL, IN THE AREAS INDICATED ON THE GRADING PLAN AND ANY OTHER AREAS AS DIRECTED BY THE ENGINEER.
 2. THE CONTRACTOR SHALL PROVIDE AND MAINTAIN HAY BALES AROUND ANY OPENINGS INTO THE STORM SEWER SYSTEM UNTIL THE PROJECT IS COMPLETED.

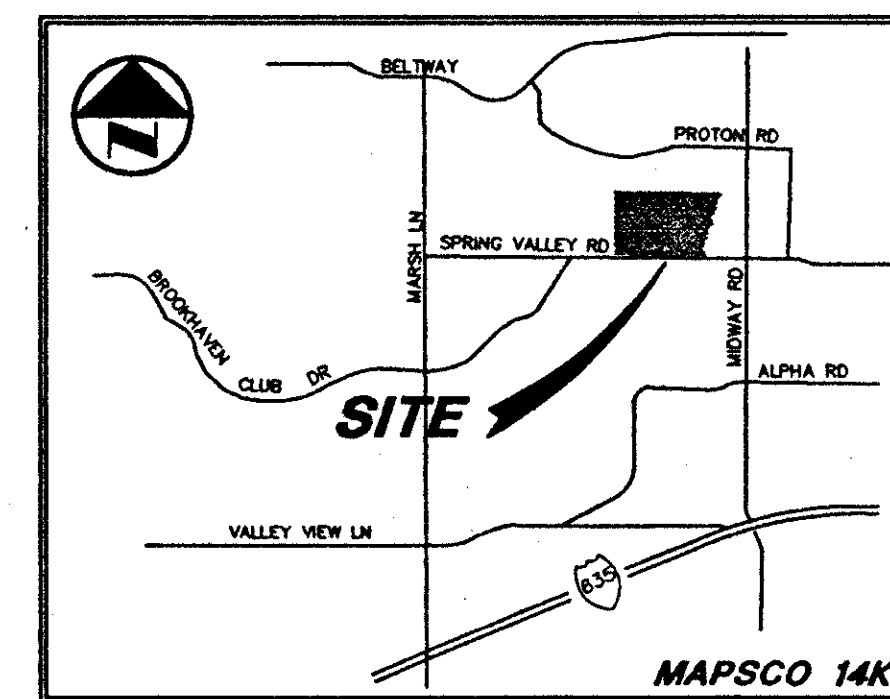
11 EROSION CONTROL DETAIL
NOT TO SCALE



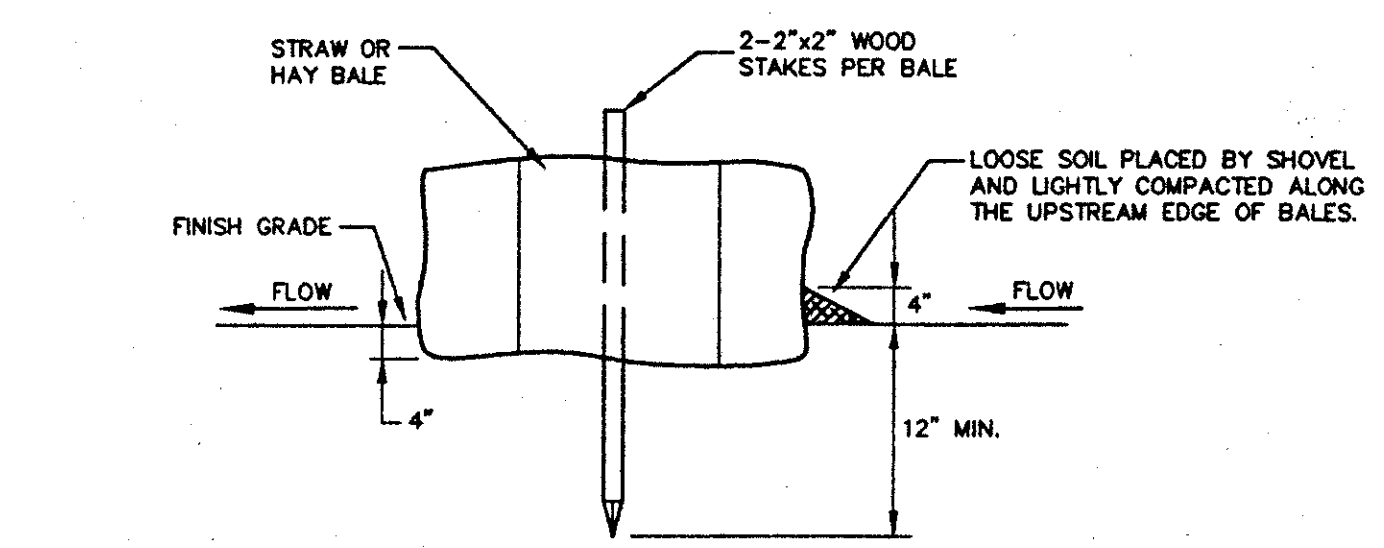
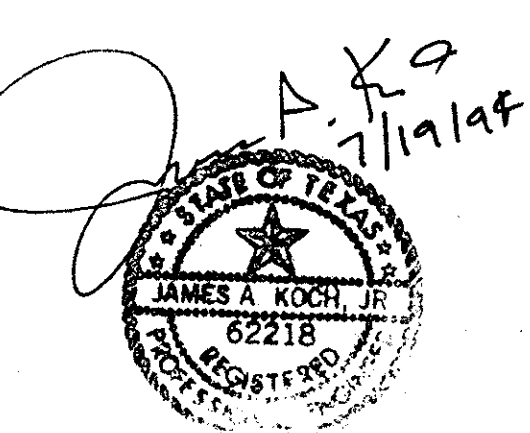
25 ASPHALT PAVEMENT SECTION
NOT TO SCALE



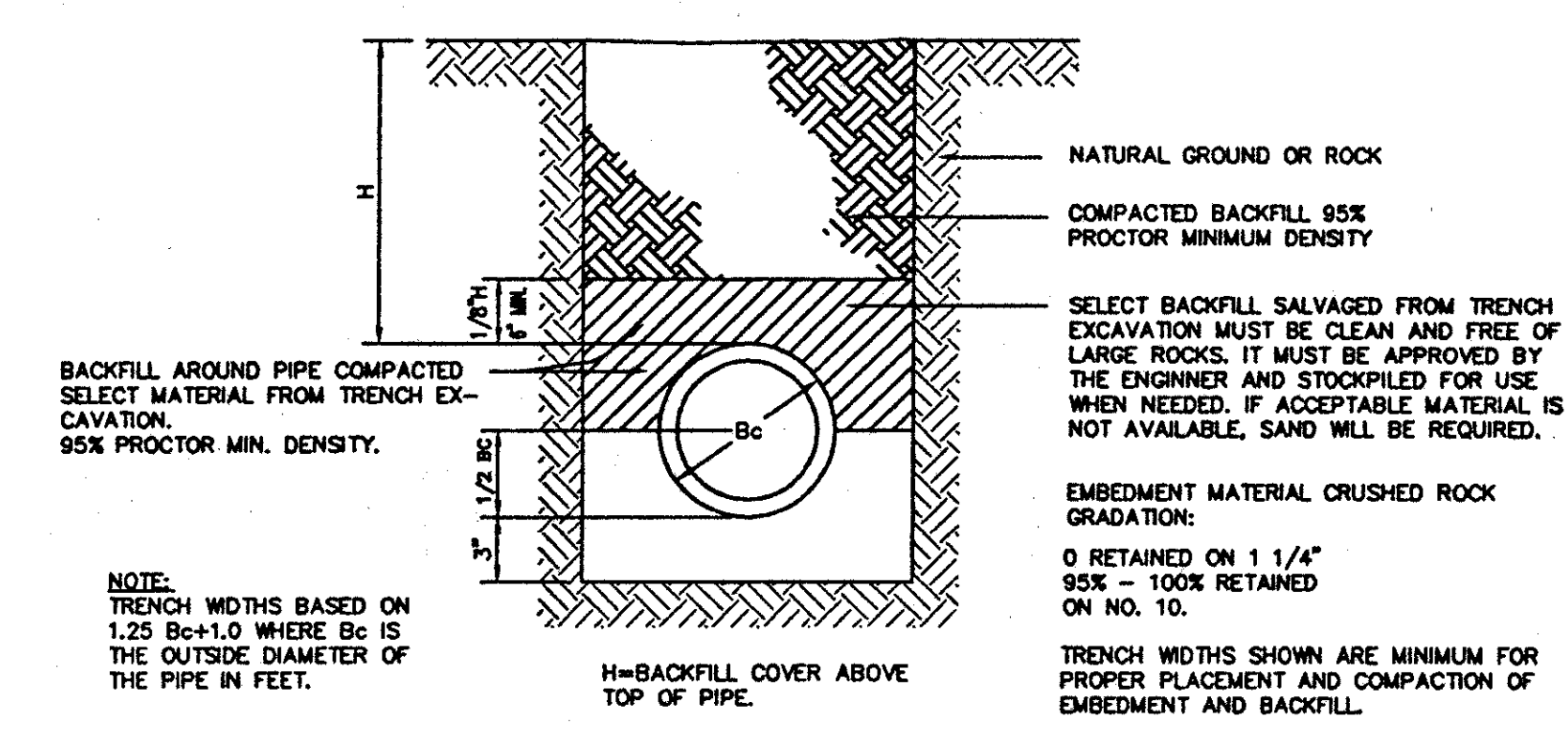
SEPARATE CURB AND ASPHALT PAVING
NO SCALE



VICINITY MAP



TYPICAL ENTRENCHED BALE PLACEMENT
N.T.S.



REINFORCED CONCRETE CLASS III PIPE INSTALLATION (EMBEDMENT DETAIL)

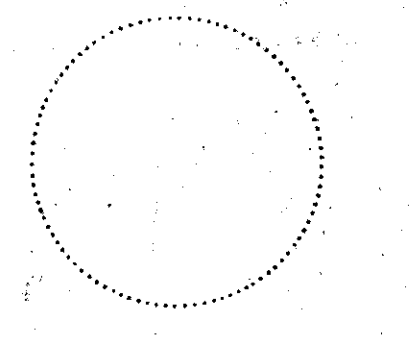
- DRAINAGE GENERAL NOTES**
1. ALL WORK, UNLESS OTHERWISE NOTED, SHALL CONFORM TO THE STANDARD SPECIFICATIONS FOR PUBLIC WORKS CONSTRUCTION, ISSUED BY THE NORTH CENTRAL TEXAS COUNCIL OF GOVERNMENTS, AND CITY OF DALLAS STANDARD CONSTRUCTION SPECIFICATIONS.
 2. UNLESS OTHERWISE NOTED, ALL CONCRETE SHALL BE CLASS "A", (3000 PSI).
 3. THE HORIZONTAL AND VERTICAL LOCATIONS OF EXISTING SUBSURFACE UTILITIES HAVE BEEN DETERMINED FROM DATA RECORDED BY OTHERS. CONTRACTOR SHALL VERIFY THAT NECESSARY CROSSING CLEARANCES BETWEEN EXISTING AND PROPOSED UTILITIES EXIST PRIOR TO CONSTRUCTION OF ANY SUCH CROSSING. IT WILL BE THE RESPONSIBILITY OF THE CONTRACTOR TO PROTECT ALL PUBLIC UTILITIES IN THE CONSTRUCTION OF THIS PROJECT.
 4. CONTRACTOR SHALL MAINTAIN ONE SET OF "RECORD DRAWINGS" ON SITE WHICH WILL BE SUBMITTED TO OWNER OR ENGINEER UPON COMPLETION OF THE PROJECT. RECORD DRAWINGS SHALL INDICATE THE LOCATION OF ALL SUBTERRANEAN UTILITY IMPROVEMENTS, AND INDICATE TIES TO ALL MANHOLES, CULVERTS, INLETS, JUNCTION BOXES, ETC.
 5. THE CONTRACTOR IS RESPONSIBLE FOR COMPLIANCE WITH ALL FEDERAL, STATE AND LOCAL REGULATIONS REGARDING TRENCH SAFETY.
 6. STORM DRAIN LINES MAY BE OF THE FOLLOWING MATERIALS:
 - a. RCP C-76, CLASS III
 - b. ADS N-12
 - c. HANCOR HI-0
 INSTALLED IN ACCORDANCE WITH MANUFACTURER'S SPECIFICATIONS.
 7. BARRICADING AND PROJECT SIGNS SHALL CONFORM TO "STATE DEPARTMENT OF HIGHWAYS AND PUBLIC TRANSPORTATION BARRICADING AND CONSTRUCTION STANDARDS."
 8. PRIOR TO COMMENCEMENT OF CONSTRUCTION, BONDS AND THREE-WAY CONTRACTS SHALL BE SUBMITTED TO THE CITY AS REQUIRED.

PACHECO KOCH		9401 LBJ Freeway, Suite 300	
Consulting Engineers, Inc.		Dallas, Texas 75243	
Civil Engineering • Land Surveying		(214) 235-3031	
DETAILS SHEET			
BUILDING EXPANSION			
GREENHILL SCHOOL			
ABST No. 273, DALLAS COUNTY			
TOWN OF ADDISON, TEXAS			
DESIGN	DRAWN	DATE	SCALE
JAK	BB	JUNE 1994	1"=20'
NOTES	FILE	NO.	
		C10	

PK NO: 1082-94.098 DWG NO: 1082-27

HIDEELL
ARCHITECTS

2811 MCKINNEY AVENUE, SUITE 207
DALLAS, TEXAS 75204 214 855-0335



LAKE/PLATO ARCHITECTS, INC.
311 Third Street, Ste. 200
San Antonio, Texas 78205
(210) 227-3335

SASAKI ASSOCIATES, INC.
1925 San Jacinto
Dallas, Texas 75201
(214) 922-9380

RAYMOND L. GOODSON, JR., INC.
10440 N. Central Exp. #600
Dallas, Texas 75231
(214) 739-8100

RONALD G. GERMAN, P.E.
11325 Pegasus, W102
Dallas, Texas 75238
(214) 553-8113

PACHECO KOCH, INC.
9401 LBJ Fwy. #300
Dallas, Texas 75243
(214) 235-3031

Revisions

Job No.

Issue Date:

Drawn By:

Checked By:

Sheet No.

of: