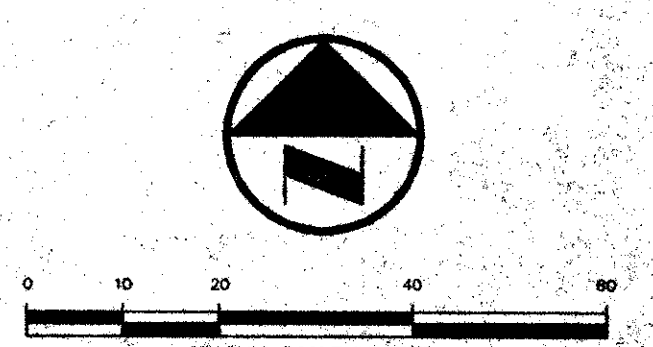
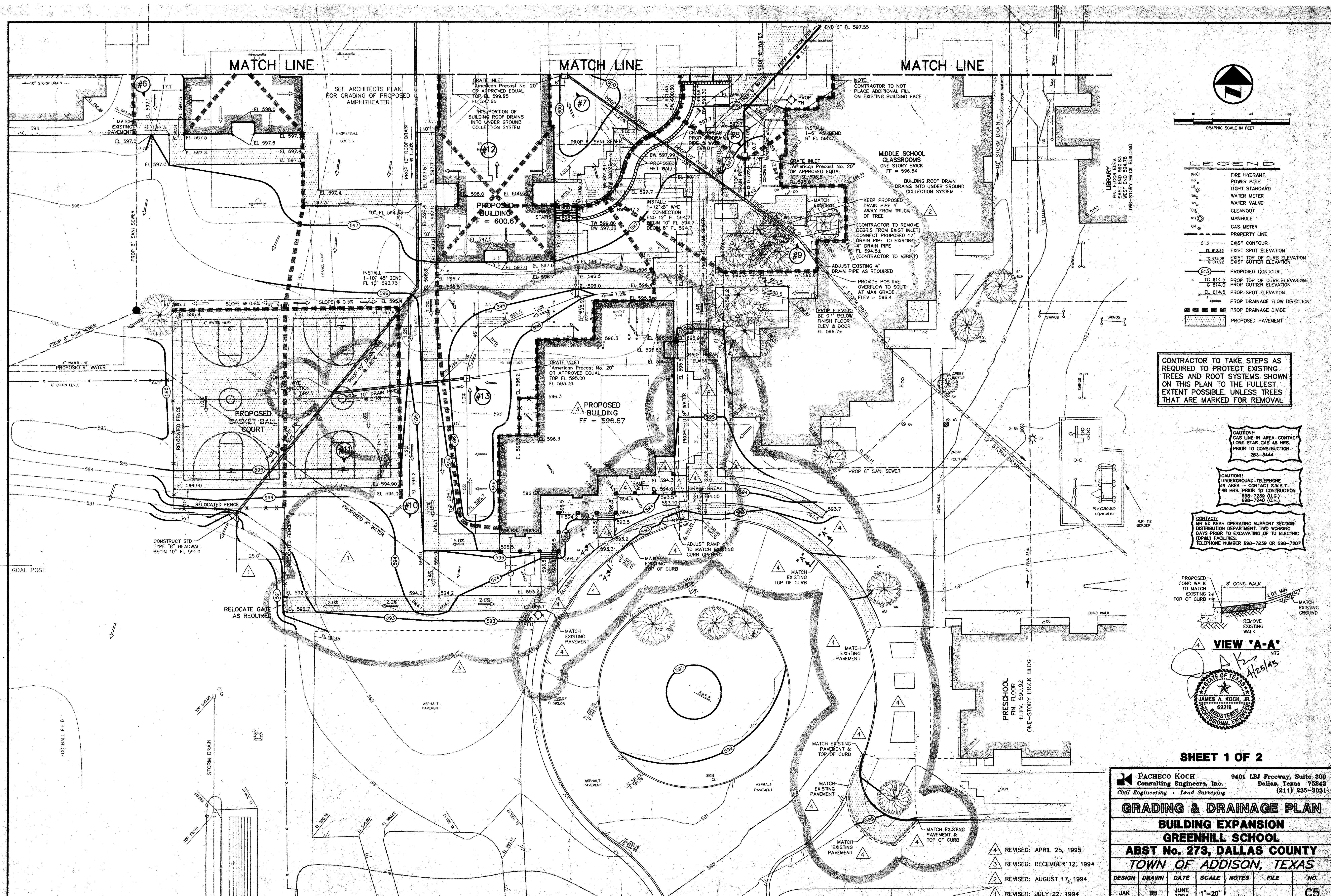




HIDELL



**LEGEND**

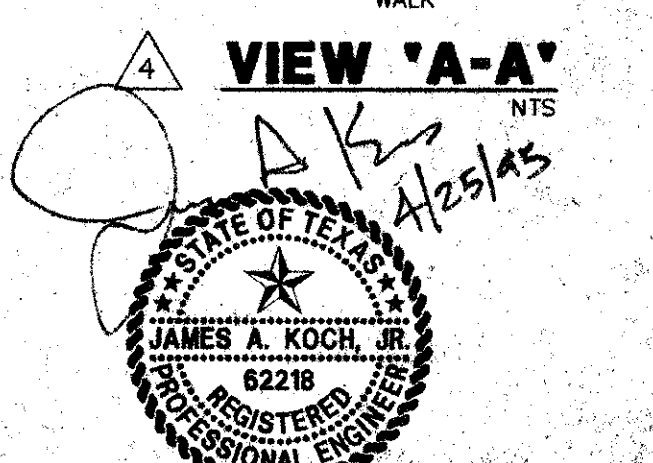
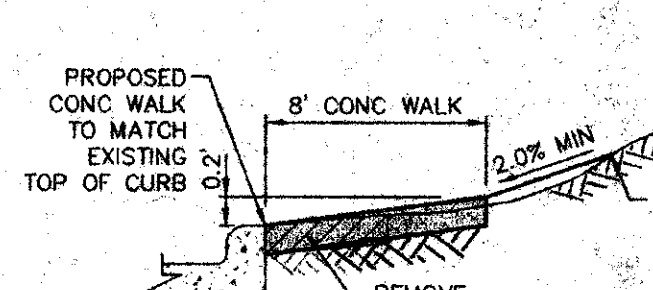
- FIRE HYDRANT
- POWER POLE
- LIGHT STANDARD
- WATER METER
- WATER VALVE
- CLEANOUT
- MANHOLE
- GAS METER
- PROPERTY LINE
- EXIST CONTOUR
- EXIST SPOT ELEVATION
- EXIST TOP OF CURB ELEVATION
- EXIST GUTTER ELEVATION
- PROPOSED CONTOUR
- EXIST TOP OF CURB ELEVATION
- EXIST GUTTER ELEVATION
- EXIST SPOT ELEVATION
- PROP DRAINAGE FLOW DIRECTION
- PROP DRAINAGE DIVIDE
- PROPOSED PAVEMENT

CONTRACTOR TO TAKE STEPS AS REQUIRED TO PROTECT EXISTING TREES AND ROOT SYSTEMS SHOWN ON THIS PLAN TO THE FULLEST EXTENT POSSIBLE. UNLESS TREES THAT ARE MARKED FOR REMOVAL.

CAUTION! GAS LINE IN AREA - CONTACT LONE STAR GAS 48 HRS. PRIOR TO CONSTRUCTION 283-3444

CAUTION! UNDERGROUND TELEPHONE IN AREA - CONTACT S.W.E.T. 48 HRS. PRIOR TO CONSTRUCTION 688-7238 (O.R.) 688-7242 (O.R.)

CONTACT: MR. ED REAN OPERATING SUPPORT SECTION DISTRIBUTION DEPARTMENT, TWO WORKING DAYS PRIOR TO EXCAVATING OF TU ELECTRIC (O.R.) FACILITIES. TELEPHONE NUMBER 688-7239 OR 688-7207



SHEET 1 OF 2

**PACHECO KOCH Consulting Engineers, Inc.** 9401 LBJ Freeway, Suite 300 Dallas, Texas 75243 (214) 235-9031  
 Civil Engineering • Land Surveying

**GRADING & DRAINAGE PLAN**  
**BUILDING EXPANSION**  
**GREENHILL SCHOOL**  
**ABST No. 273, DALLAS COUNTY**  
**TOWN OF ADDISON, TEXAS**

DESIGN	DRAWN	DATE	SCALE	NOTES	FILE	NO.
JAK	BB	JUNE 1994	1"=20'			C5

- ▲ REVISED: APRIL 25, 1995
- ▲ REVISED: DECEMBER 12, 1994
- ▲ REVISED: AUGUST 17, 1994
- ▲ REVISED: JULY 22, 1994

DATE: 06/15/94  
 TIME: 10:00 AM  
 DRAWN BY: JAK  
 CHECKED BY: BB  
 PROJECT NO: 94-008

Revisions

Job No. \_\_\_\_\_

Sheet No. \_\_\_\_\_

of: **C5**