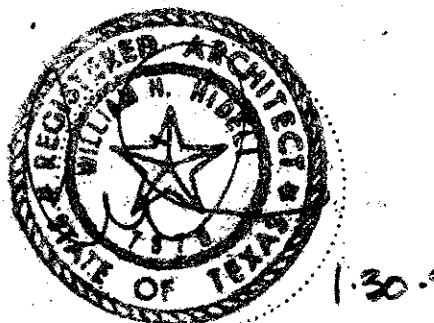


ADMINISTRATION BUILDING

HIDELL

ARCHITECTS

2811 MCKINNEY AVENUE, SUITE 207
DALLAS, TEXAS 75204 714 855-0335



LAKE/PLATO ARCHITECTS, INC.
311 Third Street, Ste. 200
San Antonio, Texas 78205
(210) 227-3335

SASAKI ASSOCIATES, INC.
1925 San Jacinto
Dallas, Texas 75201
(214) 922-9380

RAYMOND L. GOODSON, JR., INC.
10440 N. Central Exp. #600
Dallas, Texas 75231
(214) 739-8100

RONALD G. GERMAN, P.E.
11325 Pegasus, W102
Dallas, Texas 75238
(214) 553-8113

PACHECO KOCH, INC.
9401 LBJ Freeway, #300
Dallas, Texas 75243
(214) 235-3031

Revisions

1. 2/06/95

Job No. 93081, A

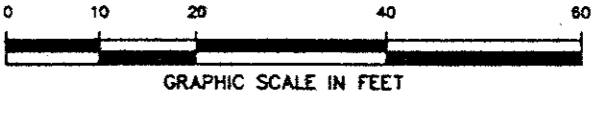
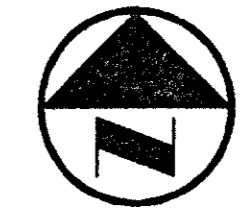
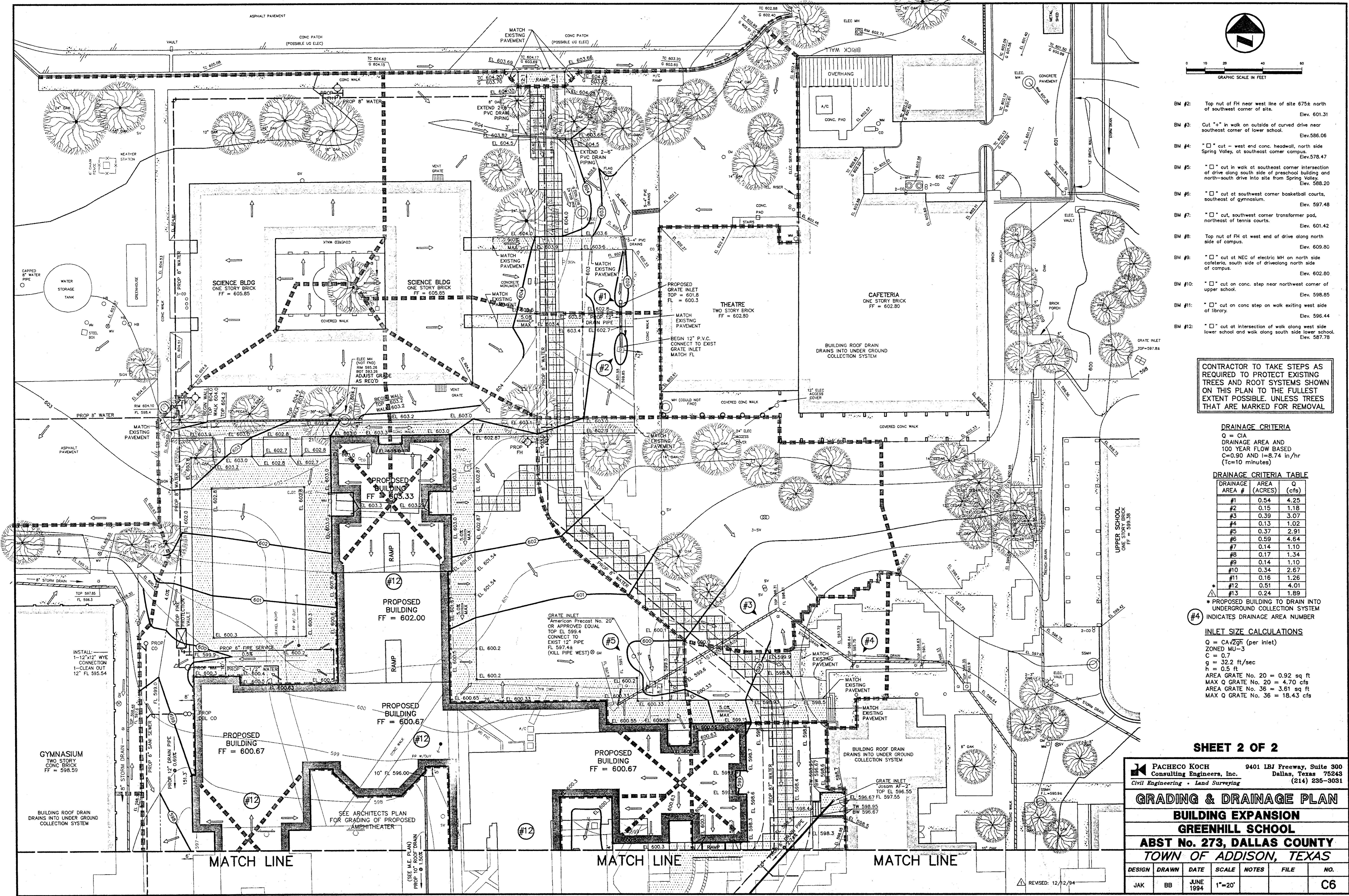
Issue Date: 12/29/94

Drawn By:

Checked By:

Sheet No.

of: C6



- BM #2: Top nut of FH near west line of site 675± north of southwest corner of site. Elev. 601.31
- BM #3: Cut "x" in walk on outside of curved drive near southeast corner of lower school. Elev. 586.06
- BM #4: "x" cut - west end conc. headwall, north side Spring Valley, at southeast corner campus. Elev. 578.47
- BM #5: "x" cut in walk at southeast corner intersection of drive along south side of preschool building and north-south drive into site from Spring Valley. Elev. 588.20
- BM #6: "x" cut at southwest corner basketball courts, southeast of gymnasium. Elev. 597.48
- BM #7: "x" cut, southwest corner transformer pad, northeast of tennis courts. Elev. 601.42
- BM #8: Top nut of FH at west end of drive along north side of campus. Elev. 609.80
- BM #9: "x" cut at NEC of electric MH on north side cafeteria, south side of driveway along north side of campus. Elev. 602.80
- BM #10: "x" cut on conc. step near northwest corner of upper school. Elev. 598.85
- BM #11: "x" cut on conc step on walk exiting west side of library. Elev. 596.44
- BM #12: "x" cut at intersection of walk along west side lower school and walk along south side lower school. Elev. 587.78

CONTRACTOR TO TAKE STEPS AS REQUIRED TO PROTECT EXISTING TREES AND ROOT SYSTEMS SHOWN ON THIS PLAN TO THE FULLEST EXTENT POSSIBLE, UNLESS TREES THAT ARE MARKED FOR REMOVAL

DRAINAGE CRITERIA

Q = CA
DRAINAGE AREA AND 100 YEAR FLOW BASED
C=0.90 AND I=8.74 in/hr
(Tc=10 minutes)

DRAINAGE CRITERIA TABLE

DRAINAGE AREA #	AREA (ACRES)	Q (cfs)
#1	0.54	4.25
#2	0.15	1.18
#3	0.39	3.07
#4	0.13	1.02
#5	0.37	2.91
#6	0.59	4.64
#7	0.14	1.10
#8	0.17	1.34
#9	0.14	1.10
#10	0.34	2.67
#11	0.16	1.26
#12	0.51	4.01
#13	0.24	1.89

* PROPOSED BUILDING TO DRAIN INTO UNDERGROUND COLLECTION SYSTEM

#4 INDICATES DRAINAGE AREA NUMBER

INLET SIZE CALCULATIONS

Q = CA^{2.49} (per inlet)
ZONED MU-3
C = 0.7
g = 32.2 ft/sec
h = 0.5 ft
AREA GRATE No. 20 = 0.92 sq ft
MAX Q GRATE No. 20 = 4.70 cfs
AREA GRATE No. 36 = 3.61 sq ft
MAX Q GRATE No. 36 = 18.43 cfs

SHEET 2 OF 2

PACHECO KOCH Consulting Engineers, Inc. 9401 LBJ Freeway, Suite 300 Dallas, Texas 75243 (214) 235-3031
Civil Engineering • Land Surveying

GRADING & DRAINAGE PLAN

BUILDING EXPANSION

GREENHILL SCHOOL

ABST No. 273, DALLAS COUNTY

TOWN OF ADDISON, TEXAS

DESIGN	DRAWN	DATE	SCALE	NOTES	FILE	NO.
JAK	BB	JUNE 1994	1"=20'			C6

REVISED: 12/12/94