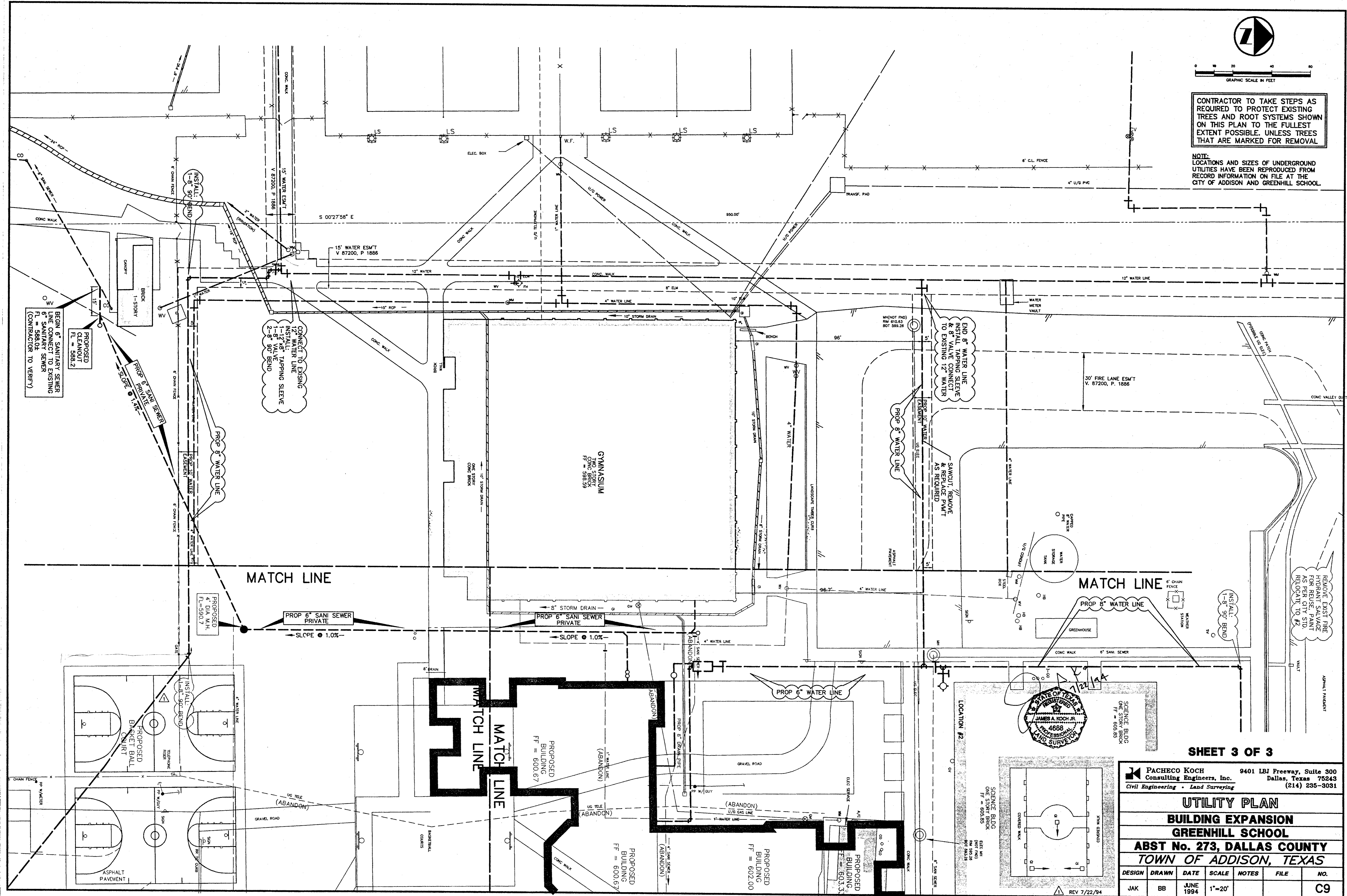


GRAPHIC SCALE IN FEET  
0 10 20 30 40

CONTRACTOR TO TAKE STEPS AS REQUIRED TO PROTECT EXISTING TREES AND ROOT SYSTEMS SHOWN ON THIS PLAN TO THE FULLEST EXTENT POSSIBLE. UNLESS TREES THAT ARE MARKED FOR REMOVAL

NOTE: LOCATIONS AND SIZES OF UNDERGROUND UTILITIES HAVE BEEN REPRODUCED FROM RECORD INFORMATION ON FILE AT THE CITY OF ADDISON AND GREENHILL SCHOOL.



MATCH LINE

MATCH LINE

SHEET 3 OF 3

**PACHECO KOCH** Consulting Engineers, Inc. 9401 LBJ Freeway, Suite 300 Dallas, Texas 75243 (214) 235-3031  
Civil Engineering - Land Surveying

**UTILITY PLAN**  
**BUILDING EXPANSION**  
**GREENHILL SCHOOL**  
**ABST No. 273, DALLAS COUNTY**  
**TOWN OF ADDISON, TEXAS**

DESIGN	DRAWN	DATE	SCALE	NOTES	FILE	NO.
JAK	BB	JUNE 1994	1"=20'			C9

PK No: 1082-94.098 DWG No: 1082-28C

- LAKE/ELATO ARCHITECTS, INC.**  
311 Third Street, Ste. 200  
San Antonio, Texas 78205  
(210) 227-3335
- SASAKI ASSOCIATES, INC.**  
1925 San Jacinto  
Dallas, Texas 75201  
(214) 922-9380
- RAYMOND L. GOODSON, JR., INC.**  
10440 N. Central Exp. #600  
Dallas, Texas 75231  
(214) 739-8100
- RONALD G. GERMAN, P.E.**  
11325 Pegasus, W102  
Dallas, Texas 75238  
(214) 553-8113
- PACHECO KOCH, INC.**  
9401 LBJ Fwy., #300  
Dallas, Texas 75243  
(214) 235-3031

Revisions


Job No. \_\_\_\_\_  
Issue Date: \_\_\_\_\_  
Drawn By: \_\_\_\_\_  
Checked By: \_\_\_\_\_

Sheet No. \_\_\_\_\_

of: \_\_\_\_\_