

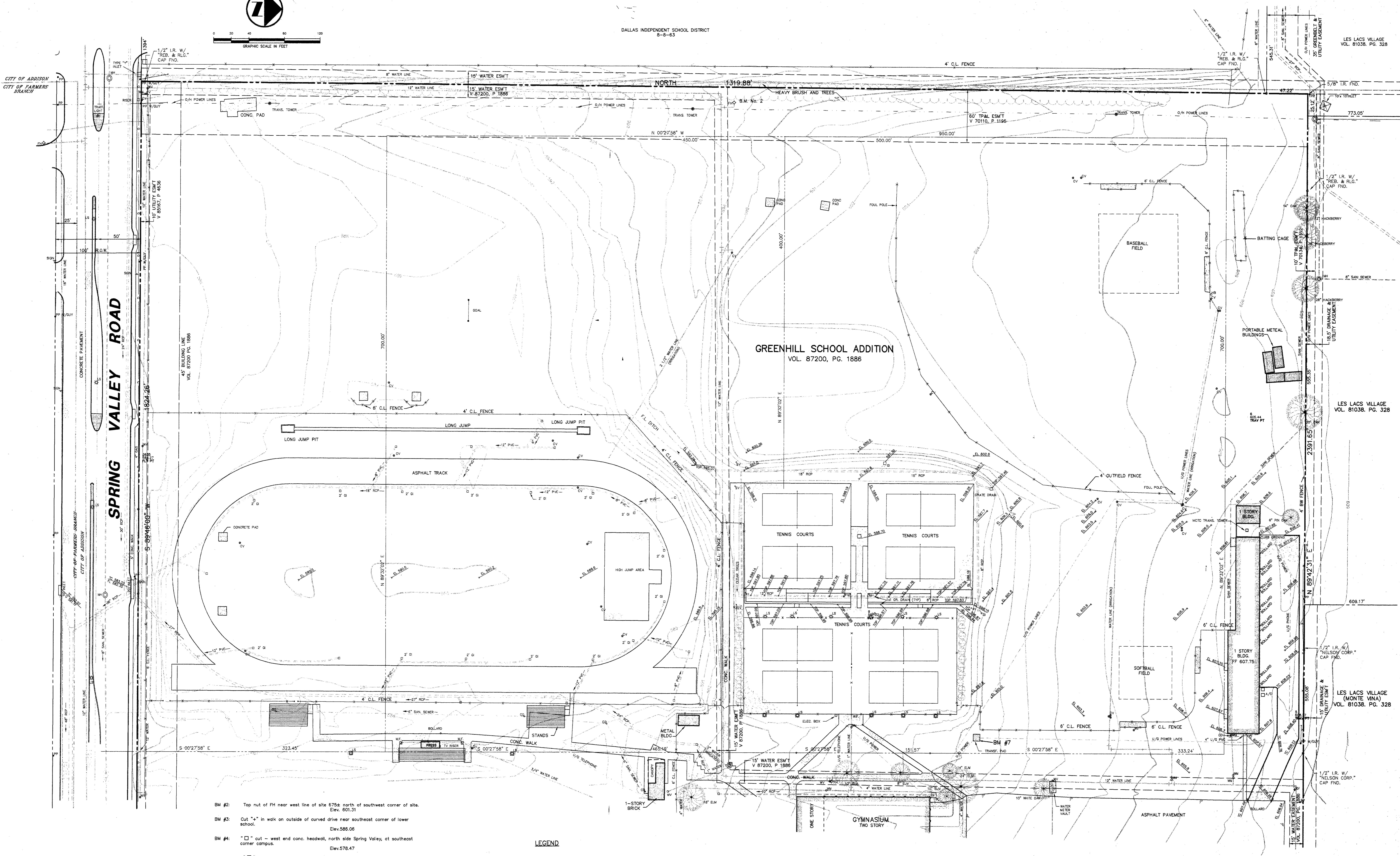
GRAPHIC SCALE IN FEET
0 20 40 60 80 100 120

DALLAS INDEPENDENT SCHOOL DISTRICT
8-8-83

LES LACS VILLAGE
VOL. 81038, PG. 328

LES LACS VILLAGE
VOL. 81038, PG. 328

LES LACS VILLAGE
(MONTE VINA)
VOL. 81038, PG. 328



GREENHILL SCHOOL ADDITION
VOL. 87200, PG. 1886

SPRING VALLEY ROAD

- BM #2: Top nut of FH near west line of site 675± north of southwest corner of school. Elev. 601.31
- BM #3: Cut "4" in walk on outside of curved drive near southeast corner of lower school. Elev. 588.06
- BM #4: "□" cut - west end conc. headwall, north side Spring Valley, at southeast corner campus. Elev. 578.47
- BM #5: "□" cut in walk at southeast corner intersection of drive along south side of preschool building and north-south drive into site from Spring Valley. Elev. 588.20
- BM #6: "□" cut at southwest corner basketball courts, southeast of gymnasium. Elev. 597.48
- BM #7: "□" cut, southeast corner transformer pad, northeast of tennis courts. Elev. 601.42
- BM #8: Top nut of FH at west end of drive along north side of campus. Elev. 609.80
- BM #9: "□" cut at NEC of electric MH on north side cafeteria, south side of drive along north side of campus. Elev. 602.80
- BM #10: "□" cut on conc. step near northwest corner of upper school. Elev. 598.85
- BM #11: "□" cut on conc. step on walk exiting west side of library. Elev. 596.44
- BM #12: "□" cut at intersection of walk along west side lower school and walk along south side lower school. Elev. 587.78

LEGEND

- ⊙ F.I. FIRE HYDRANT
- ⊙ M.H. MANHOLE
- ⊙ G.I. GRATE INLET
- ⊙ C.V. CONTROL VALVE
- ⊙ W.V. WATER VALVE
- ⊙ W.M. WATER METER
- ⊙ L.S. LIGHT STANDARD
- ⊙ C.O. CLEAN OUT
- ⊙ P.P. POWER POLE
- ⊙ H.B. HOSE BIB
- ⊙ W.F. WATER FOUNTAIN
- ⊙ C.M. CONC. MONUMENT
- ⊙ G.M. GAS METER
- PROPERTY LINE

NOTE
LOCATIONS AND SIZES OF UNDERGROUND UTILITIES SHOWN ARE BASED ON INFORMATION ON FILE AT GREENHILL, CITY OF ADDISON AND VERBAL DISCUSSION WITH GREENHILL PERSONNEL.

TOPOGRAPHIC SURVEY
OF
**A PORTION OF
GREENHILL SCHOOL**

THOMAS L. CHENOWETH SURVEY, ABSTRACT 273
CITY OF ADDISON, DALLAS COUNTY, TEXAS

PACHECO KOCH
Consulting Engineers, Inc. 9401 LBJ Freeway, Suite 800
Dallas, Texas 75248 (214) 285-2081

UPDATED JULY 26, 1993

DRAWN BY J.A.	CHECKED BY JAK	SCALE 1"=40'	DATE AUG 1993	JOB NUMBER 1082-83.121
------------------	-------------------	-----------------	------------------	---------------------------