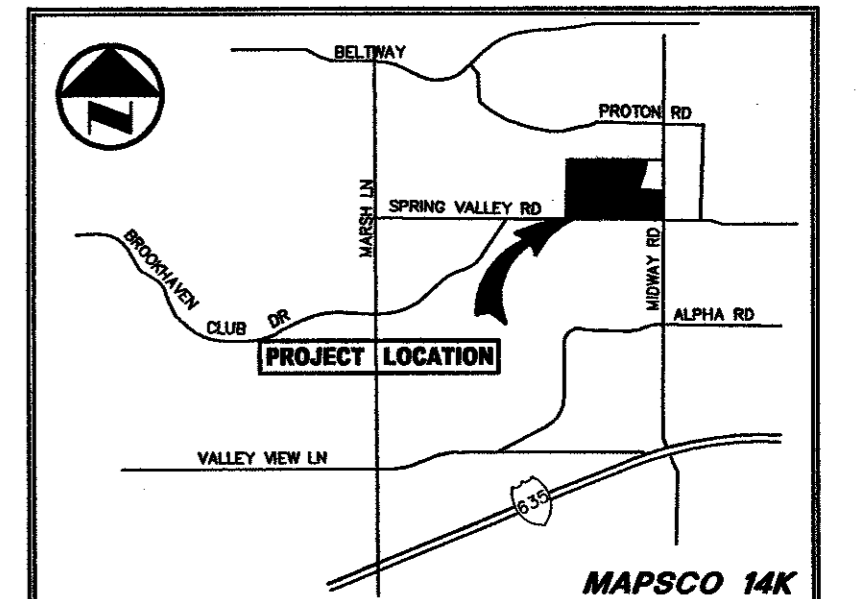
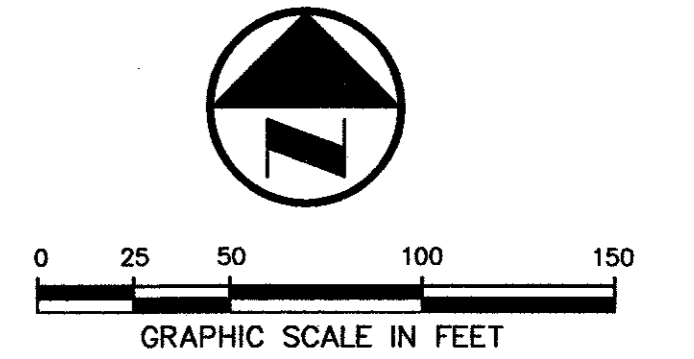


LES LECS VILLAGE PHASE I  
V. 83183, P. 4319

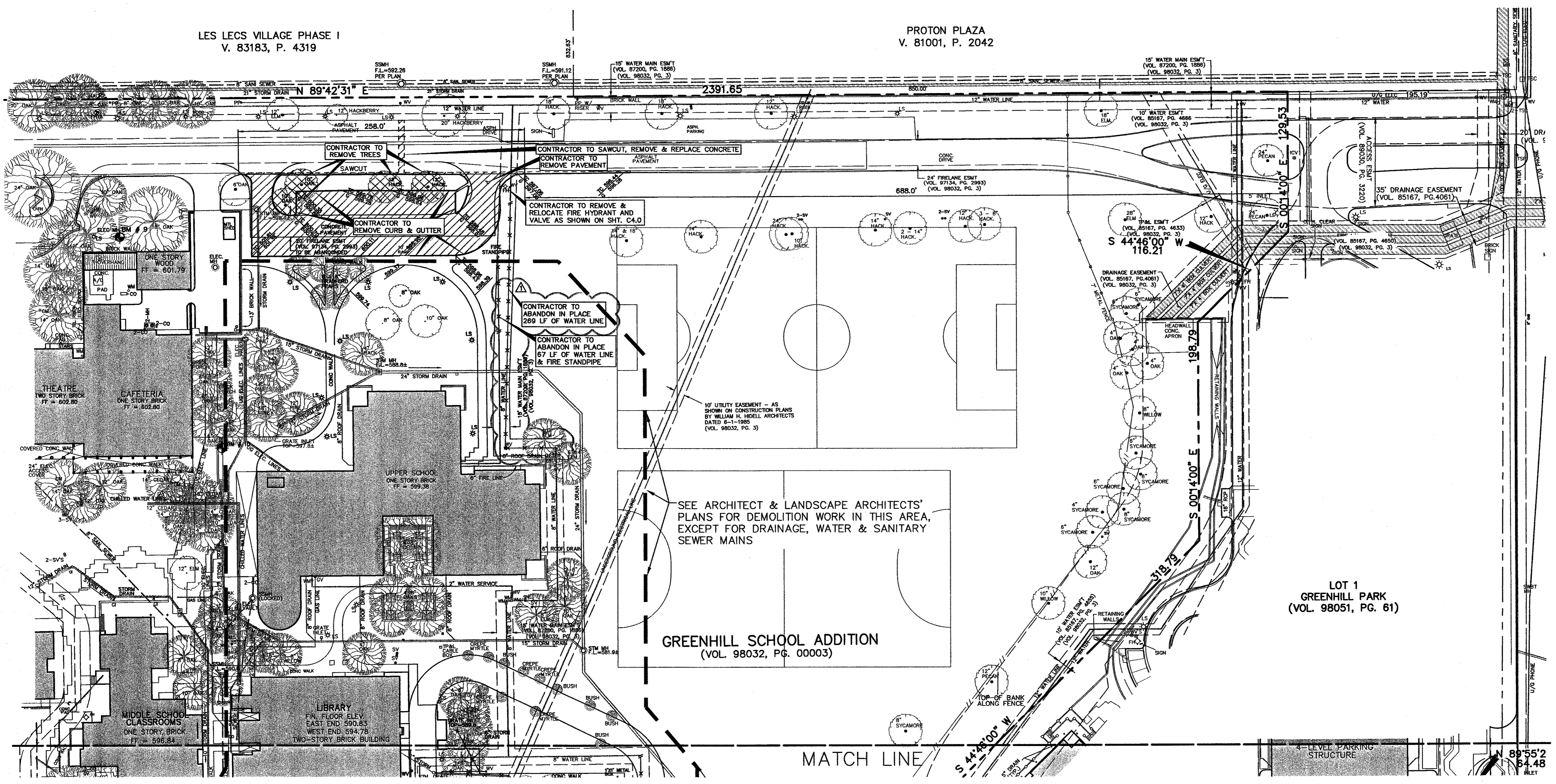
PROTON PLAZA  
V. 81001, P. 2042



VICINITY MAP

LEGEND

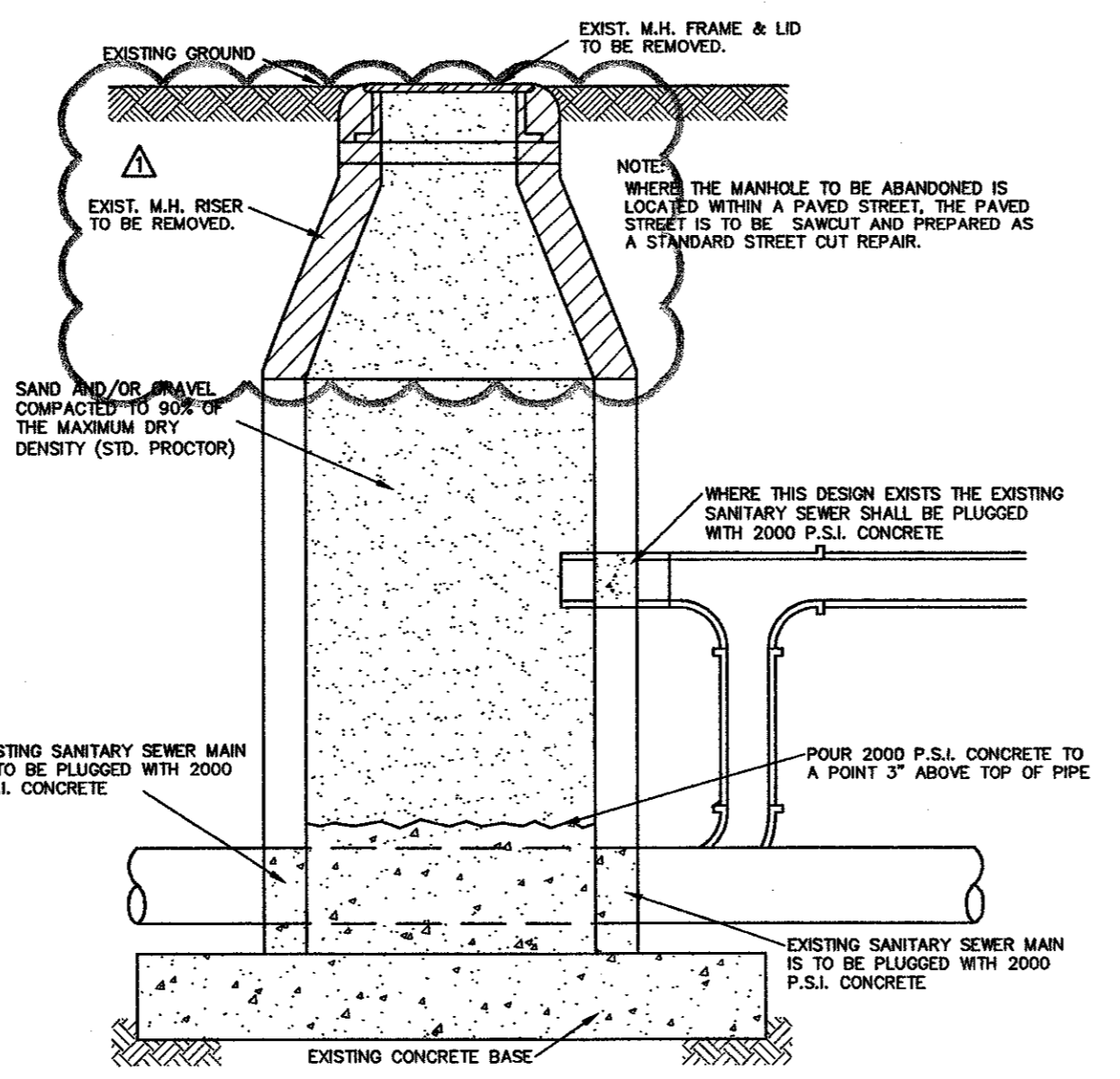
- B. BOLLARD
- EM ELECTRIC METER
- PP POWER POLE
- LS LIGHT STANDARD
- WM WATER METER
- WV WATER VALVE
- ICV IRRIGATION CONTROL VALVE
- FH FIRE HYDRANT
- CO CLEANOUT
- MH MANHOLE
- TSC TRAFFIC SIGNAL CONTROL
- TSP TRAFFIC SIGNAL POLE
- TEL TELEPHONE BOX
- FL FLOOD LIGHT
- FP FLAG POLE
- TR TRAFFIC SIGN
- IRS 1/2" IRON ROD
- W/PACHICO KOCH" CAP SET
- (C.M.) CONTROLLING MONUMENT
- PROPERTY LINE
- FENCE
- OH OVERHEAD UTILITY LINE
- UW UNDERGROUND WATER LINE
- EL UNDERGROUND ELECTRIC LINE
- UT UNDERGROUND TELEPHONE LINE
- UC UNDERGROUND CABLE LINE
- US UNDERGROUND SANITARY SEWER LINE
- PROPOSED DEMOLITION
- TREE REMOVAL



SEE ARCHITECT & LANDSCAPE ARCHITECTS' PLANS FOR DEMOLITION WORK IN THIS AREA, EXCEPT FOR DRAINAGE, WATER & SANITARY SEWER MAINS

GREENHILL SCHOOL ADDITION  
(VOL. 98032, PG. 00003)

LOT 1  
GREENHILL PARK  
(VOL. 98051, PG. 61)



Abandonment of Existing Manhole

1 NOT TO SCALE

DEMOLITION NOTES

1. REVIEW ALL GENERAL NOTES.
2. REMOVE ALL EXISTING PAVEMENT AND STRUCTURES WITHIN THE SHADED AREA UNLESS OTHERWISE NOTED.
3. SAWCUT AND REMOVE ALL EXISTING DRIVE APPROACHES THAT ARE SHADED 2 FEET FROM THE BACK OF CURB.
4. CONSULT THE DIMENSIONAL CONTROL PLAN, VERIFY THE PORTION OF EXISTING CONCRETE CURBS WHICH ARE TO REMAIN.
5. COORDINATE WITH TXU, SOUTHWESTERN BELL TELEPHONE, AND THE LOCAL CABLE COMPANY PRIOR TO THE REMOVAL AND/OR RELOCATION OF EXISTING UTILITIES.
6. ALL UTILITIES SHOULD BE CUT AND PLUGGED IN COORDINATION WITH THEIR RESPECTIVE UTILITY COMPANIES AND PRIOR TO THE DEMOLITION OF THE EXISTING BUILDINGS.
7. CONTRACTOR TO PLUG ALL EXPOSED ENDS AND ABANDONED UTILITIES.
8. CONTRACTOR TO DETERMINE SOURCE OF ALL EXPOSED UTILITIES AND IF REQUIRED, RECONNECT TO PROPOSED UTILITIES.
9. CONTRACTOR IS RESPONSIBLE FOR REMOVAL AND DISPOSAL OF ALL UNSUITABLE MATERIALS.
10. REMOVE ALL WATER, SANITARY SEWER, AND DRAINAGE APPURTENANCES THAT ARE ASSOCIATED WITH ALL REMOVED, RELOCATED, OR ABANDONED UTILITIES LINES.

BENCH MARKS	
BM #3:	Cut "+" in walk on outside of curved drive near southeast corner of lower school. Elev. 586.06
BM #4:	"□" cut - west end conc. headwall, north side Spring Valley, at southeast corner campus. Elev. 578.47
BM #5:	"□" cut in walk at southeast corner intersection of drive along south side of preschool building and north-south drive into site from Spring Valley. Elev. 588.20
BM #9:	"□" cut at NEC of electric MH on north side cafeteria, south side of drive along north side of campus. Elev. 602.80
BM #10:	"□" cut on conc. step near northwest corner of upper school. Elev. 598.85
BM #11:	"□" cut on conc step on walk exiting west side of library. Elev. 598.44
BM #12:	"□" cut at intersection of walk along west side of lower school and walk along south side Lower school. Elev. 587.78



THE SEAL APPEARING ON THIS DOCUMENT WAS AUTHORIZED BY STEVEN A. MARKUSSEN, P.E. 70090 ON 03/31/2004. ALTERATION OF A SEALED DOCUMENT WITHOUT PROPER NOTIFICATION TO THE RESPONSIBLE ENGINEER IS AN OFFENSE UNDER THE TEXAS ENGINEERING PRACTICE ACT.

NO.	DATE	REVISION
1	04/30/2004	REVISED ABANDONED WATER LINE AND DETAIL

Pacheco Koch Consulting Engineers  
8350 N CENTRAL EXPWY SUITE 1000 DALLAS, TEXAS 75208 972.235.3031

**DEMOLITION PLAN**  
**GREENHILL SCHOOL**  
**THOMAS L. CHENOWETH SURVEY, ABSTRACT NO. 273**  
**TOWN OF ADDISON, TEXAS**

DESIGN	DRAWN	DATE	SCALE	NOTES	FILE	NO.
BJM	FJM	NOV. 2003	1"=50'			<b>C1.0</b>

DWG FILE: 1082-03.024CV.DWG

GREENHILL SCHOOL