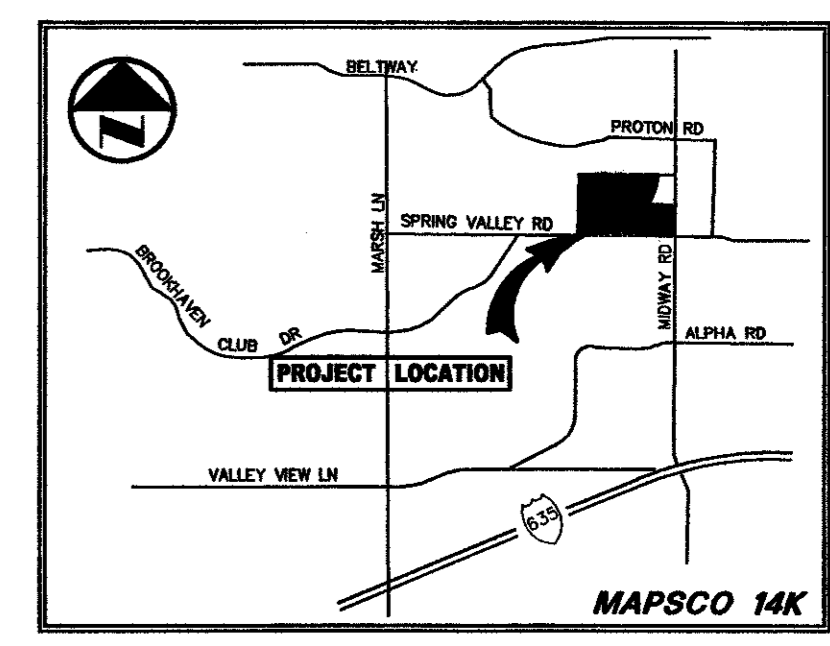
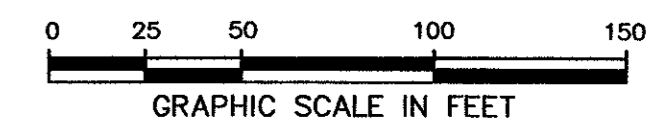
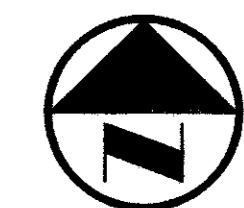


GREENHILL SCHOOL ADDITION
(VOL. 98032, PG. 00003)

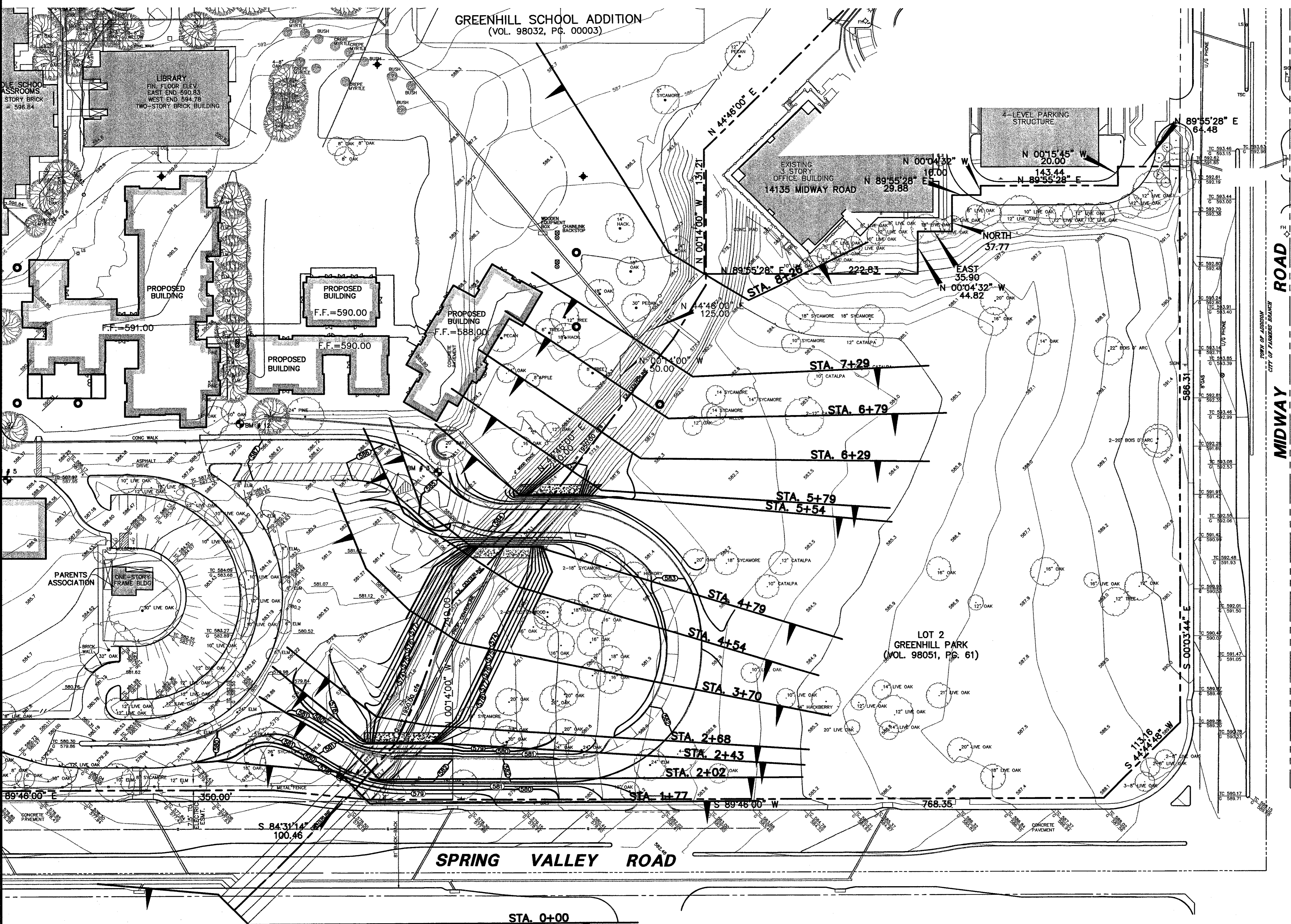


VICINITY MAP

LEGEND

- B. BOLLARD
- EM ELECTRIC METER
- PP POWER POLE
- LS LIGHT STANDARD
- WM WATER METER
- WV WATER VALVE
- ICV IRRIGATION CONTROL VALVE
- FH FIRE HYDRANT
- CO CLEANOUT
- MH MANHOLE
- TSC TRAFFIC SIGNAL CONTROL
- TSP TRAFFIC SIGNAL POLE
- TELE TELEPHONE BOX
- FL FLOOD LIGHT
- FP FLAG POLE
- TR TRAFFIC SIGN
- IRS 1/2-INCH IRON ROD W/ "PACHECO KOCH" CAP SET
- (C.M.) CONTROLLING MONUMENT
- PROPERTY LINE
- FENCE
- OH OVERHEAD UTILITY LINE
- UW UNDERGROUND WATER LINE
- EL UNDERGROUND ELECTRIC LINE
- UT UNDERGROUND TELEPHONE LINE
- UC UNDERGROUND CABLE LINE
- US UNDERGROUND SANITARY SEWER LINE
- ES EXIST SPOT ELEVATION
- EC EXIST TOP OF CURB ELEVATION
- EG EXIST GUTTER ELEVATION
- PC PROPOSED CONTOUR
- PT PROPOSED TOP OF CURB ELEVATION
- PG PROPOSED GUTTER ELEVATION
- PE PROPOSED SPOT ELEVATION
- PD PROPOSED DRAINAGE FLOW DIRECTION
- 613 EXIST CONTOUR

THE 100 YEAR FLOW RATE WAS OBTAINED FROM THE FEMA FIS FOR FARMERS BRANCH CREEK. THE FLOW RATE SHOWN ON THE FIS IS LOCATED AT THE DOWNSTREAM END OF THE EXISTING BOX CULVERTS UNDER SPRING VALLEY ROAD.



THE SEAL APPEARING ON THIS DOCUMENT WAS AUTHORIZED BY STEVEN A. MARKUSSEN, P.E. 70090 ON 03/31/2004. ALTERATION OF A SEALED DOCUMENT WITHOUT PROPER NOTIFICATION TO THE RESPONSIBLE ENGINEER IS AN OFFENSE UNDER THE TEXAS ENGINEERING PRACTICE ACT.

NO.	DATE	REVISION				
Pacheco Koch Consulting Engineers 8350 N CENTRAL EXPWY SUITE 1000 DALLAS, TEXAS 75206 972.235.3031						
FLOODPLAIN STUDY MAP GREENHILL SCHOOL GREENHILL SCHOOL ADDITION THOMAS L. CHENOWETH SURVEY, ABSTRACT NO. 273 TOWN OF ADDISON, TEXAS						
DESIGN	DRAWN	DATE	SCALE	NOTES	FILE	NO.
BJM	FJM	NOV. 2003	1"=50'			C3.2

DIVEX
 04/25/2004 5:21 PM
 M:\1082-03\1082-03.024.DWG\1082-03.024XS.DWG

GREENHILL SCHOOL