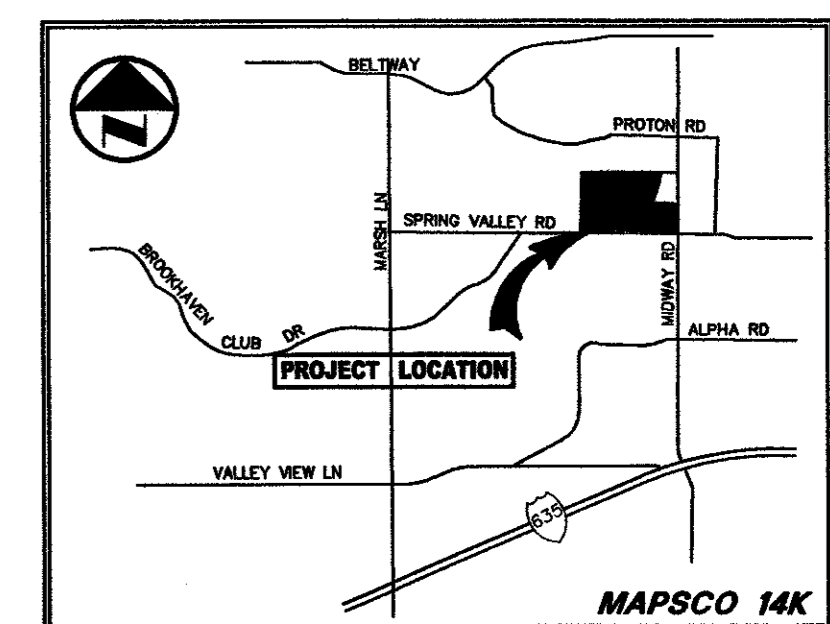
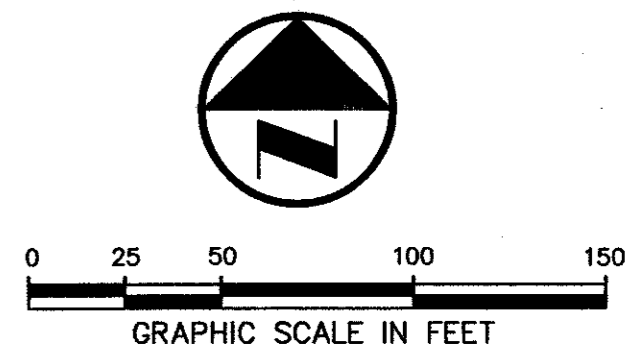


LES LECS VILLAGE PHASE I
V. 83183, P. 4319

PROTON PLAZA
V. 81001, P. 2042

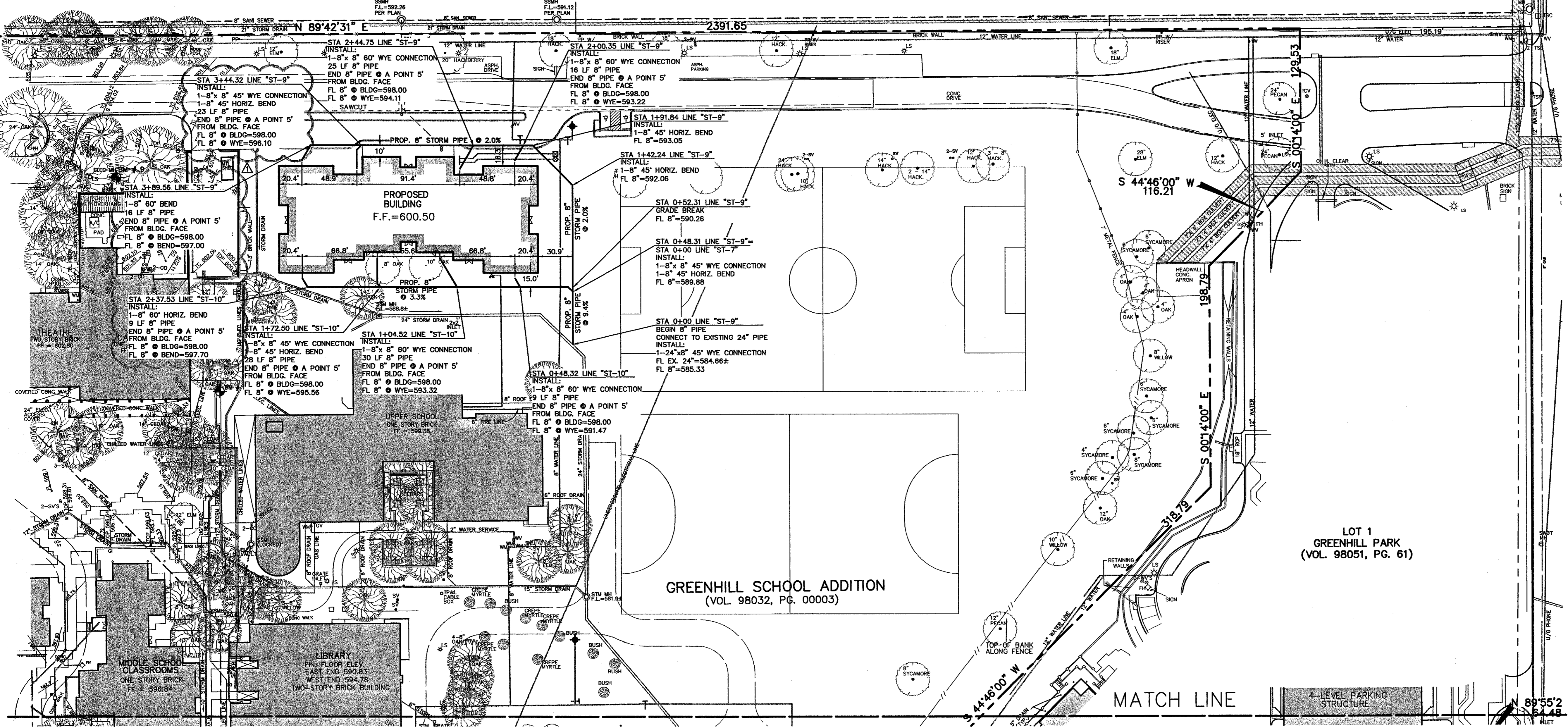


VICINITY MAP

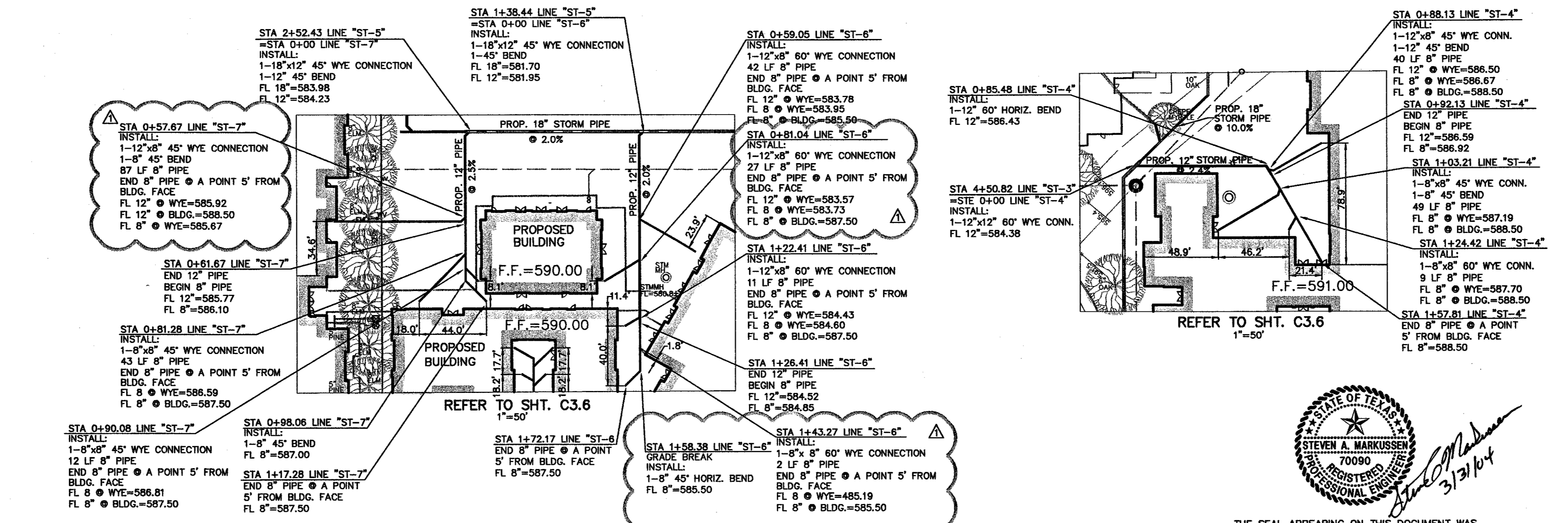
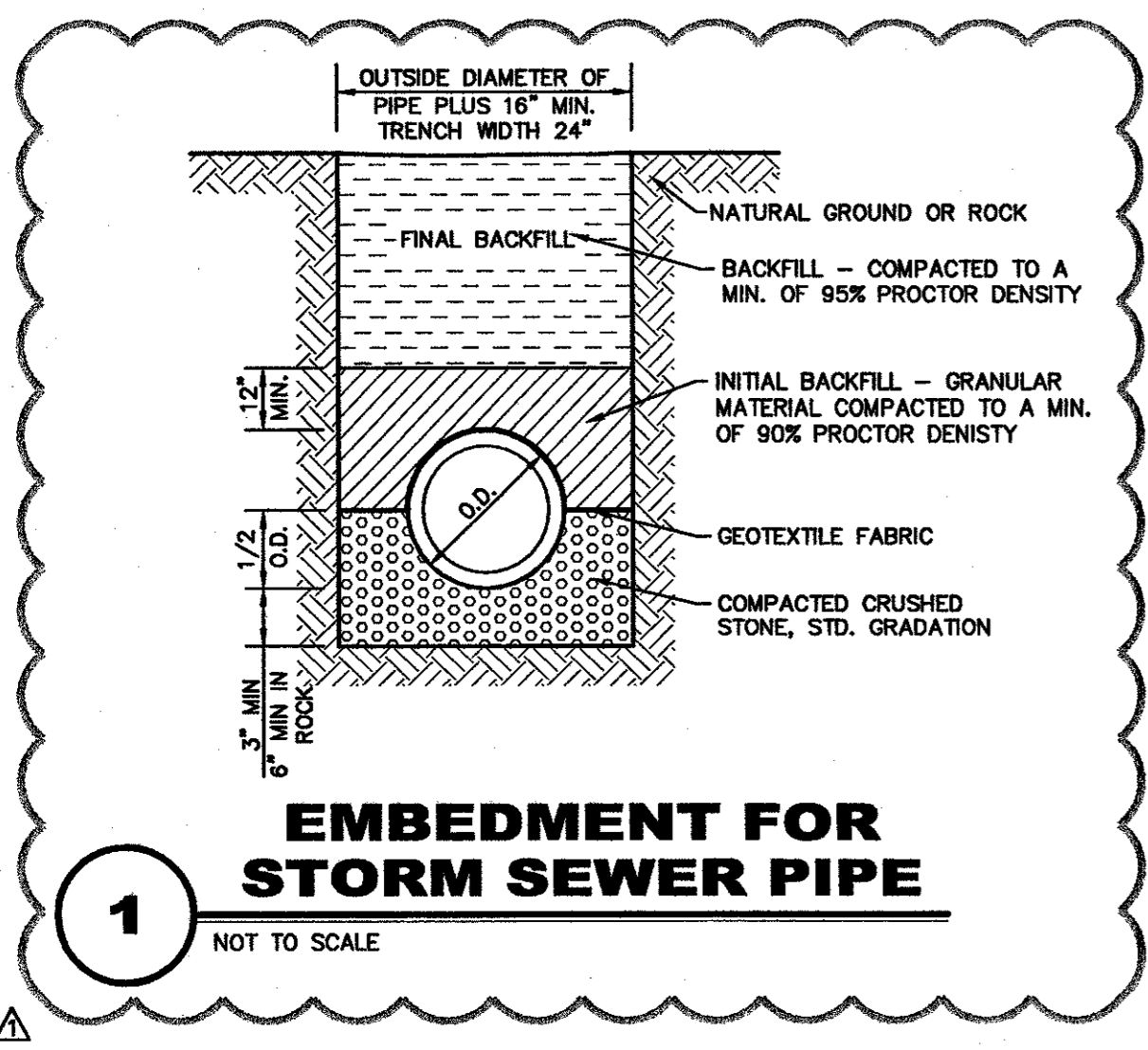
LEGEND

- B. BOLLARD
- EM. ELECTRIC METER
- PP. POWER POLE
- LS. LIGHT STANDARD
- WM. WATER METER
- WV. WATER VALVE
- ICV. IRRIGATION CONTROL VALVE
- FH. FIRE HYDRANT
- CO. CLEANOUT
- MH. MANHOLE
- TSC. TRAFFIC SIGNAL CONTROL
- TSP. TRAFFIC SIGNAL POLE
- TELE. TELEPHONE BOX
- FL. FLOOD LIGHT
- FP. FLAG POLE
- TR. TRAFFIC SIGN
- IRS. 1/2-INCH IRON ROD
- W/P. W/PACHECO KOCH CAP SET
- (C.M.) CONTROLLING MONUMENT
- PROPERTY LINE
- - - FENCE
- OH. OVERHEAD UTILITY LINE
- U.W. UNDERGROUND WATER LINE
- E. UNDERGROUND ELECTRIC LINE
- T. UNDERGROUND TELEPHONE LINE
- C. UNDERGROUND CABLE LINE
- S. UNDERGROUND SANITARY SEWER LINE
- PROPOSED DRAINAGE DIVIDE

REFER TO SHT. C3.6 FOR GRADING & DRAINAGE NOTES



- BENCH MARKS**
- BM #3: Cut "+" in walk on outside of curved drive near southeast corner of lower school. Elev. 586.06
 - BM #4: "□" cut - west end conc. headwall, north side Spring Valley, at southeast corner campus. Elev. 578.47
 - BM #5: "□" cut in walk at southeast corner intersection of drive along south side of preschool building and north-south drive into site from Spring Valley. Elev. 588.20
 - BM #9: "□" cut at NEC of electric MH on north side cafeteria, south side of drive along north side of campus. Elev. 602.80
 - BM #10: "□" cut on conc. step near northwest corner of upper school. Elev. 598.85
 - BM #11: "□" cut on conc. step on walk exiting west side of library. Elev. 596.44
 - BM #12: "□" cut at intersection of walk along west side of lower school and walk along south side Lower school. Elev. 587.78



REFER TO SHT. C3.6
1"=50'



THE SEAL APPEARING ON THIS DOCUMENT WAS AUTHORIZED BY STEVEN A. MARKUSSEN, P.E. 7090 ON 03/31/2004. ALTERATION OF A SEALED DOCUMENT WITHOUT PROPER NOTIFICATION TO THE RESPONSIBLE ENGINEER IS AN OFFENSE UNDER THE TEXAS ENGINEERING PRACTICE ACT.

NO.	DATE	REVISION
04/30/2004		REVISED APPURTENANCES, STATION, & ADDED DETAIL

Pacheco Koch Consulting Engineers
8350 N CENTRAL EXPWY SUITE 1000 DALLAS, TEXAS 75206 972.236.3031

DRAINAGE PLAN
GREENHILL SCHOOL
GREENHILL SCHOOL ADDITION
THOMAS L. CHENOWETH SURVEY, ABSTRACT NO. 273
TOWN OF ADDISON, TEXAS

DESIGN	DRAWN	DATE	SCALE	NOTES	FILE	NO.
BJM	FJM	NOV. 2003	1"=50'			C3.5

D:\DWG\10\1082-03-02A\DWG\1082-03-02A\DCV.DWG 04/30/2004 11:28PM M:\DWG\10\1082-03-02A\DWG\1082-03-02A\DCV.DWG