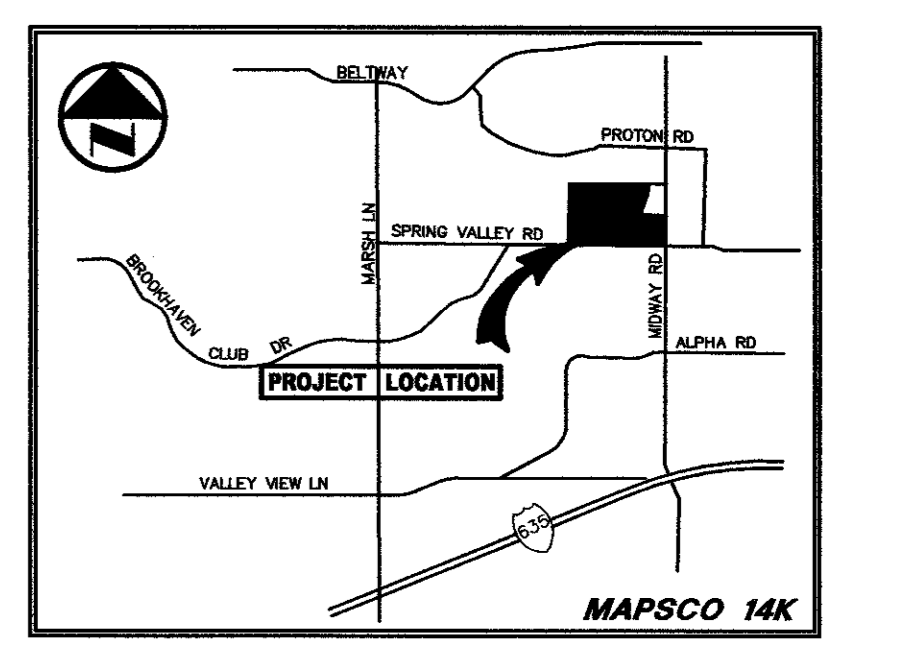
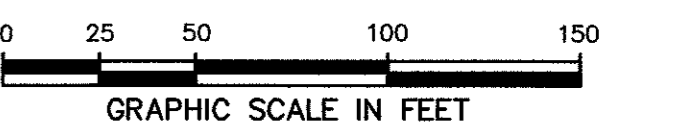
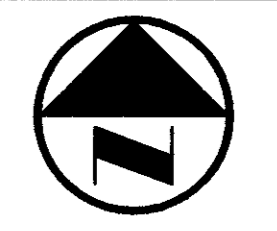


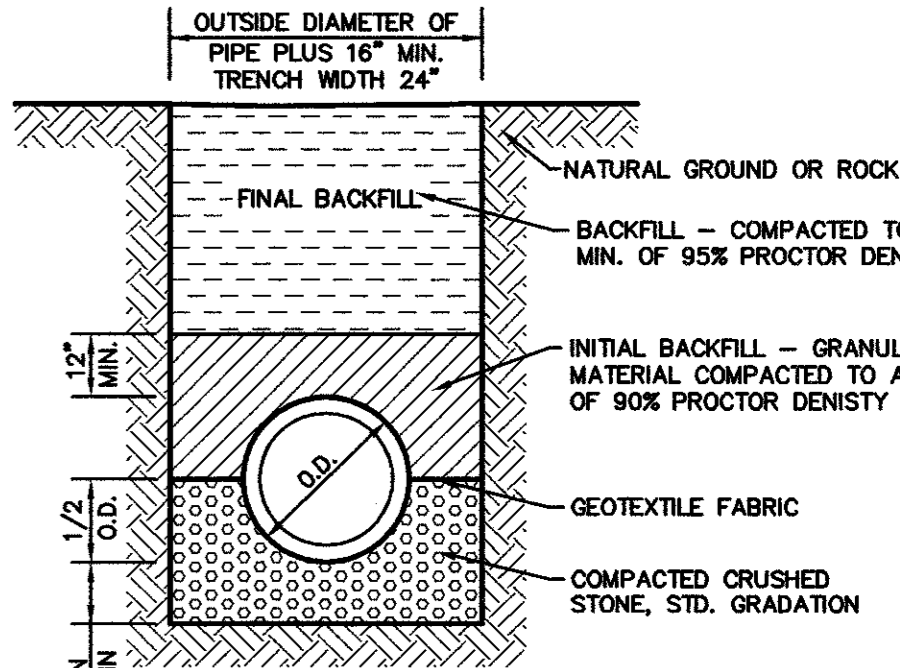
MATCH LINE



VICINITY MAP

LEGEND

- Legend items: BOLLARD, ELECTRIC METER, POWER POLE, LIGHT STANDARD, WATER METER, WATER VALVE, IRRIGATION CONTROL VALVE, FIRE HYDRANT, CLEANOUT, MANHOLE, TRAFFIC SIGNAL CONTROL, TRAFFIC SIGNAL POLE, TELEPHONE BOX, FLOOD LIGHT, FLAG POLE, TRAFFIC SIGN, 1/2-INCH IRON ROD, W/PACHCO KOCH' CAP SET, CONTROLLING MONUMENT, PROPERTY LINE, FENCE, OVERHEAD UTILITY LINE, UNDERGROUND WATER LINE, UNDERGROUND ELECTRIC LINE, UNDERGROUND TELEPHONE LINE, UNDERGROUND CABLE LINE, UNDERGROUND SANITARY SEWER LINE, PROPOSED DRAINAGE DIVIDE.



EMBEDMENT FOR STORM SEWER PIPE

1 NOT TO SCALE

ISSUED FOR PRELIMINARY PRICING PURPOSES ONLY (SUBJECT TO REVISION PRIOR TO CONSTRUCTION)

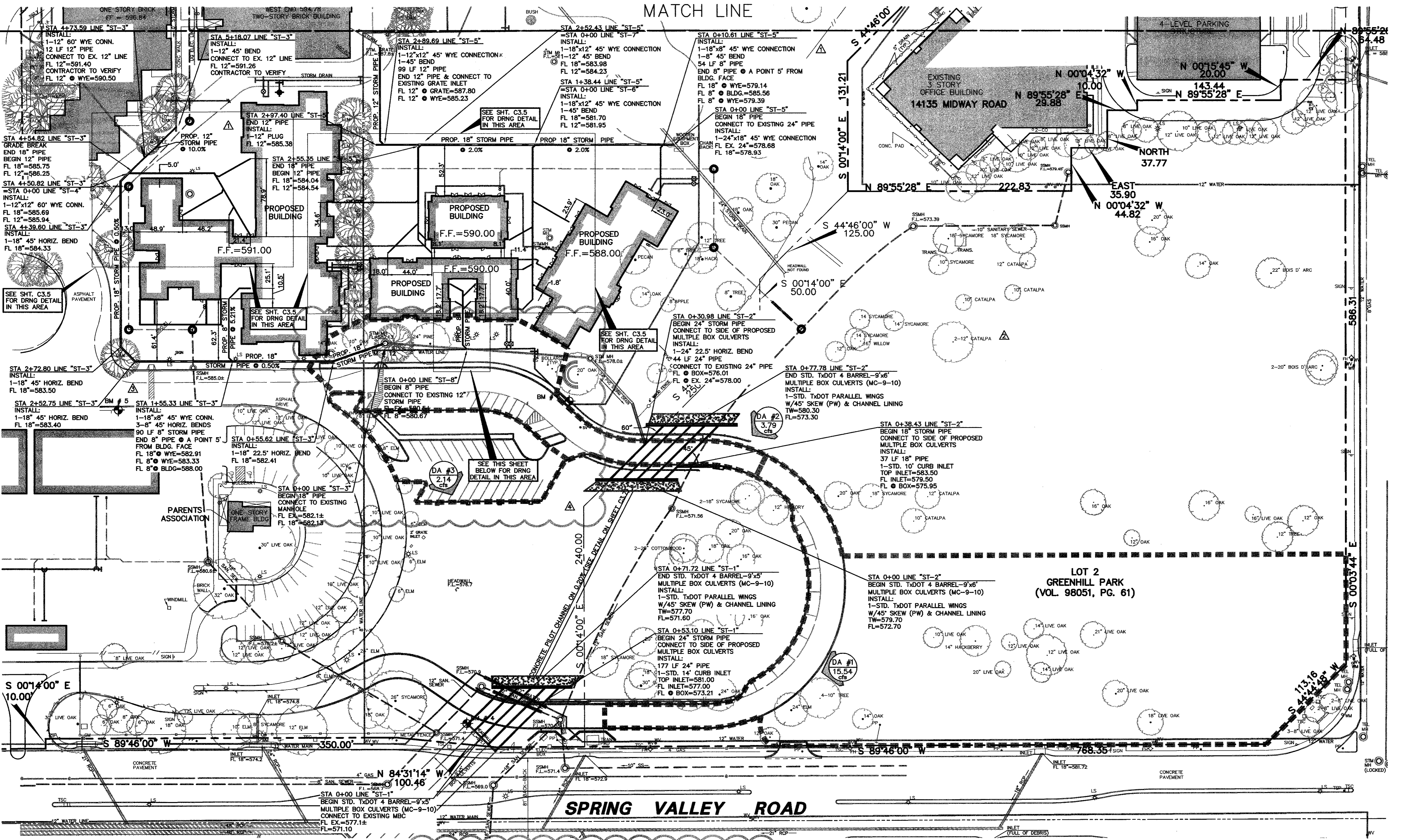
THESE DOCUMENTS HAVE BEEN PREPARED BY THE ENGINEER WITH THE INTENT OF COMPLYING WITH ALL CITY STANDARD REQUIREMENTS. THESE DOCUMENTS HAVE NOT BEEN APPROVED AND RELEASED FOR CONSTRUCTION BY THE CITY AS OF THIS DATE. AND, THEREFORE, REVISIONS MAY BE REQUIRED PRIOR TO CONSTRUCTION. BY ANY USE OF THESE DOCUMENTS, THE USER AFFIRMS THEIR UNDERSTANDING OF THE PRELIMINARY STATUS OF THE PLANS AND THE POTENTIAL FOR REVISION PRIOR TO ANY CONSTRUCTION.

Table with 3 columns: NO., DATE, REVISION. Includes entries for added parking lot, added 8" storm pipe, revised culvert, and revised appurtenances.

Pacheco Koch Consulting Engineers 8350 N CENTRAL EXPWY SUITE 1000 DALLAS, TEXAS 75206 972.235.3031

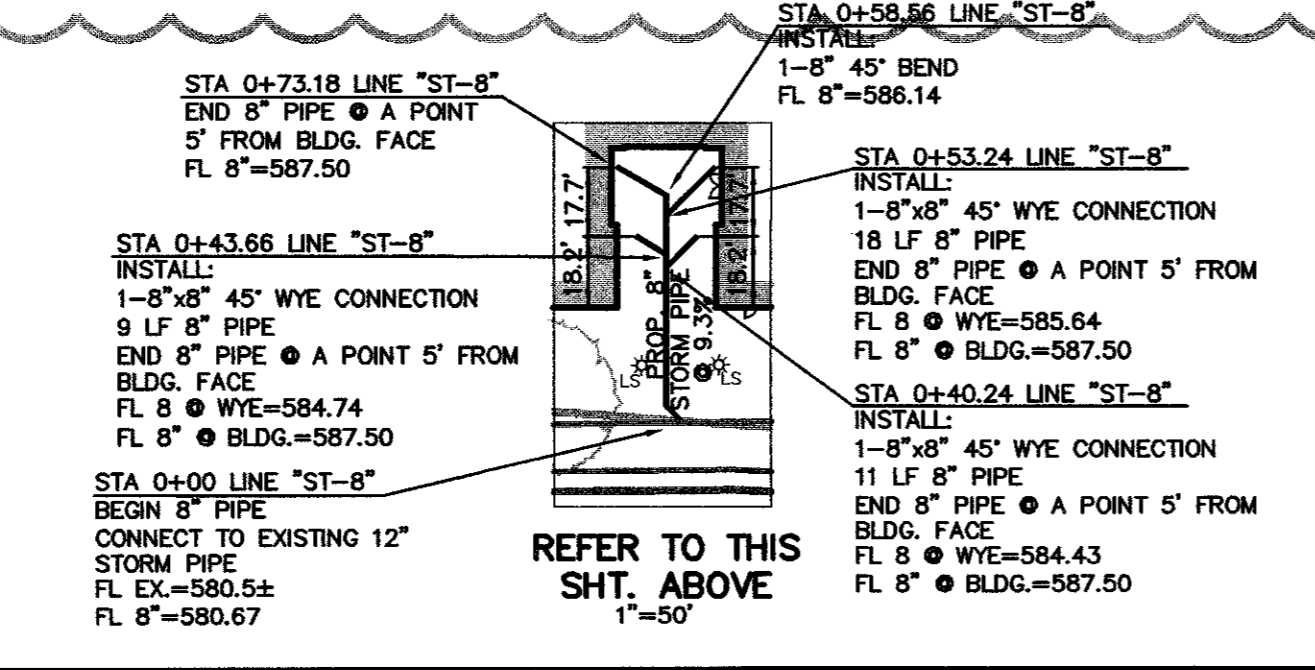
DRAINAGE PLAN GREENHILL SCHOOL THOMAS L. CHENOWETH SURVEY, ABSTRACT NO. 273 TOWN OF ADDISON, TEXAS

Table with 6 columns: DESIGN, DRAWN, DATE, SCALE, NOTES, FILE, NO. Includes entry for design by BJM, drawn by FJM, date NOV. 2003, scale 1"=50', file C3.6.



- GRADING AND DRAINAGE GENERAL NOTES: 1. REFER TO GEOTECHNICAL REPORT FOR REQUIREMENTS REGARDING FILL COMPACTION AND MOISTURE CONTENT. 2. UNLESS NOTED, ALL FILL IS TO BE COMPACTED TO A MINIMUM OF 95% STANDARD PROCTOR DENSITY WITHIN 3% OF OPTIMUM MOISTURE CONTENT. 3. SIDEWALKS AND ACCESSIBLE ROUTES SHALL HAVE A SLOPE NO GREATER THAN 5% AND A CROSS FALL NO GREATER THAN 2% UNLESS NOTED OTHERWISE. 4. GRADING OF ALL HANDICAPPED SPACES AND ROUTES TO CONFORM TO STATE, LOCAL AND FEDERAL GUIDELINES. 5. UNLESS NOTED, STORM DRAIN LINES MAY BE OF THE FOLLOWING MATERIALS: A. RCP C-76, CLASS III B. ADS N-12 C. HANCOR HI-Q AND INSTALLED IN ACCORDANCE WITH MANUFACTURER'S SPECIFICATIONS. 6. UNLESS NOTED, GRATE INLET TO BE 'AMERICAN INDUSTRIAL PRE-CAST PRODUCTS, INC.' PRECAST CATCH BASIN, SIZED AS SHOWN, OF APPROVED EQUAL. 7. FINAL PAVING, CURB AND SIDEWALK ELEVATIONS WILL BE PLACED AT PLUS OR MINUS 0.03 FOOT. 8. REFER TO LANDSCAPE SPECIFICATION FOR SEEDING AND SOODING REQUIREMENTS. 9. ANY CONCRETE, ROCK OR MATERIAL DEEMED UNSUITABLE FOR SUBGRADE, BY ENGINEER, SHALL BE DISPOSED OF OFFSITE AT CONTRACTOR'S EXPENSE. 10. TRENCH BACKFILL MATERIAL SHALL CONFORM TO THE REQUIREMENTS OF NCTCOG ITEM 6.2.10, AND SHALL BE MECHANICALLY COMPACTED IN ACCORDANCE WITH NCTCOG ITEM 6.2.3 TO A MINIMUM OF 95% STANDARD PROCTOR DENSITY UNLESS OTHERWISE SHOWN ON THESE PLANS OR STATED IN THE STANDARD CITY SPECIFICATIONS. 11. EMBEDMENT SHALL CONFORM TO THE REQUIREMENTS OF NCTCOG ITEM 6.2.9 UNLESS OTHERWISE SHOWN ON THESE PLANS OR STATED IN THE STANDARD CITY SPECIFICATIONS. 12. A ROUND MANHOLE COVER MEETING CITY SPECIFICATIONS SHALL BE PLACED IN ALL INLET TOPS. THE MANHOLE COVER SHALL BE PLACED NEAR THE OUTLET PIPE. 13. ALL CONCRETE FOR INLETS AND DRAINAGE STRUCTURES SHALL CONFORM TO NCTCOG ITEM 7.4.5, CLASS 'A' UNLESS OTHERWISE SHOWN ON THESE PLANS OR STATED IN STANDARD CITY SPECIFICATIONS. 14. CRUSHED STONE BEDDING OR APPROVED EQUAL SHALL BE PROVIDED BY THE CONTRACTOR WHEN ROCK IS ENCOUNTERED IN TRENCHES. THERE SHALL BE NO ADDITIONAL PAY ITEM OF THE CRUSHED STONE BEDDING. 15. IF REQUIRED DUE TO CONSTRUCTION, POWER POLES TO BE BRACED OR RELOCATED AT CONTRACTORS EXPENSE.

PROPOSED DRAINAGE CRITERIA: Q=(C)(I)(A) C=0.70. DRAINAGE AREA TABLE with columns: DRAINAGE AREA No., AREA (acres), C, Tc (minutes), STORM FREQUENCY (100 YEAR), Q100 (cfs), Q10 (cfs), COMMENTS.



BENCH MARKS table listing BM #3 through BM #12 with descriptions of their locations and elevations.

PRELIMINARY NOT FOR CONSTRUCTION THIS DOCUMENT IS ISSUED FOR THE PURPOSE OF SCHEMATIC REVIEW ONLY AND IS NOT INTENDED FOR PERMITTING, BIDDING, OR CONSTRUCTION PURPOSES. PLANS PREPARED UNDER THE DIRECT SUPERVISION OF STEVEN A. MARKUSSEN, P.E. TEXAS REGISTRATION NO. 70980 DATE: 02/27/2004

DATE: 04/28/2005 10:50AM DWG: 1082-03.024 DWG: 1082-03.024CVDWG