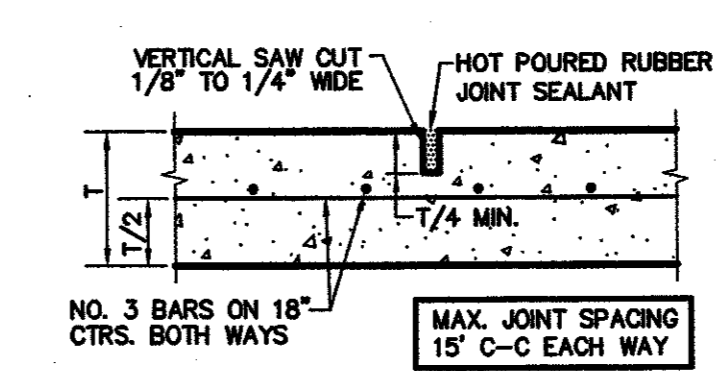
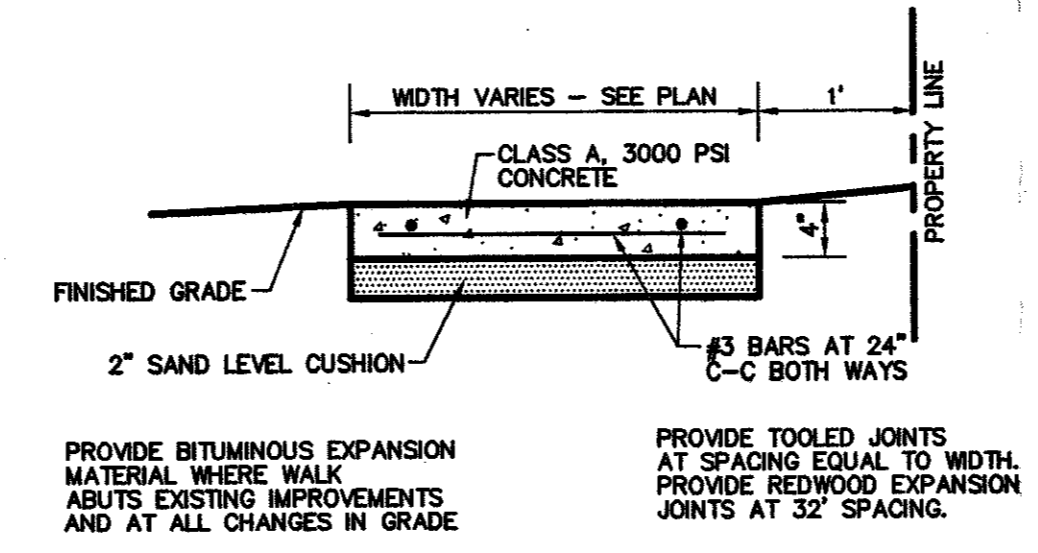
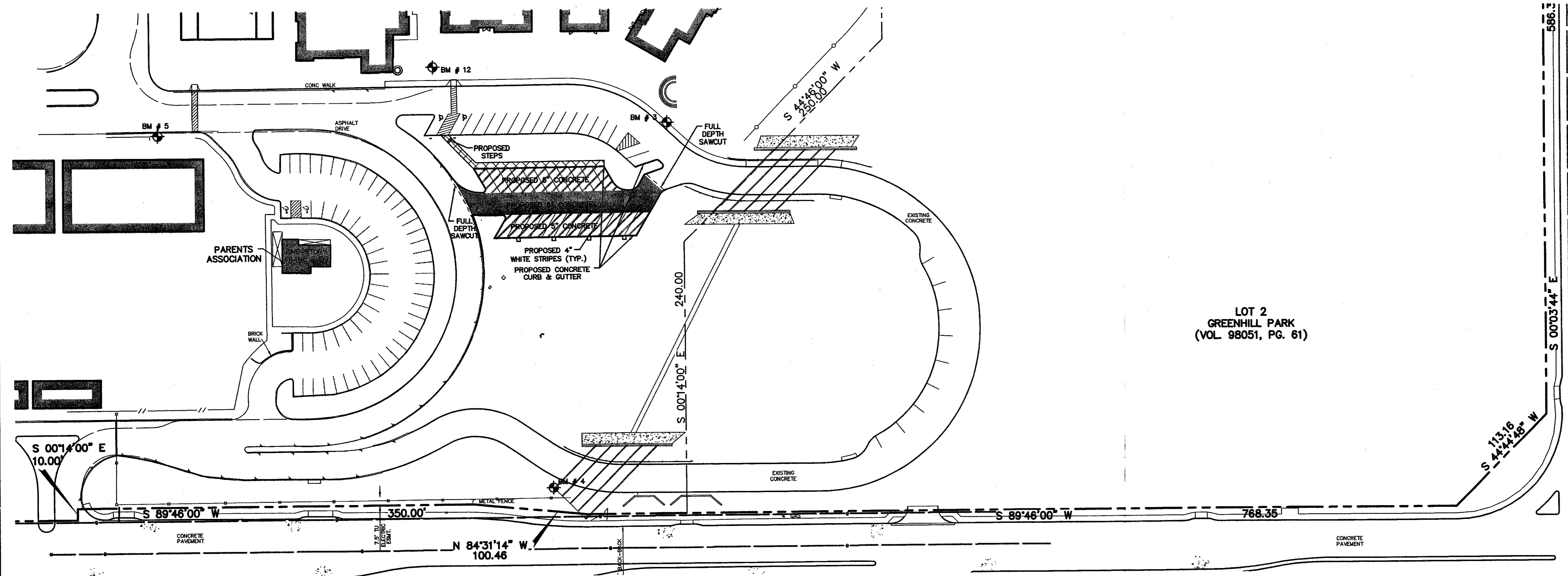


VICINITY MAP

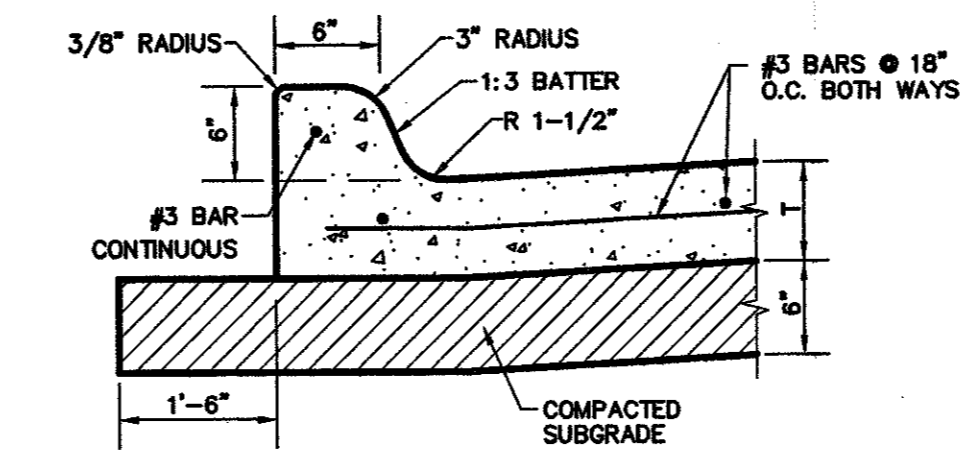
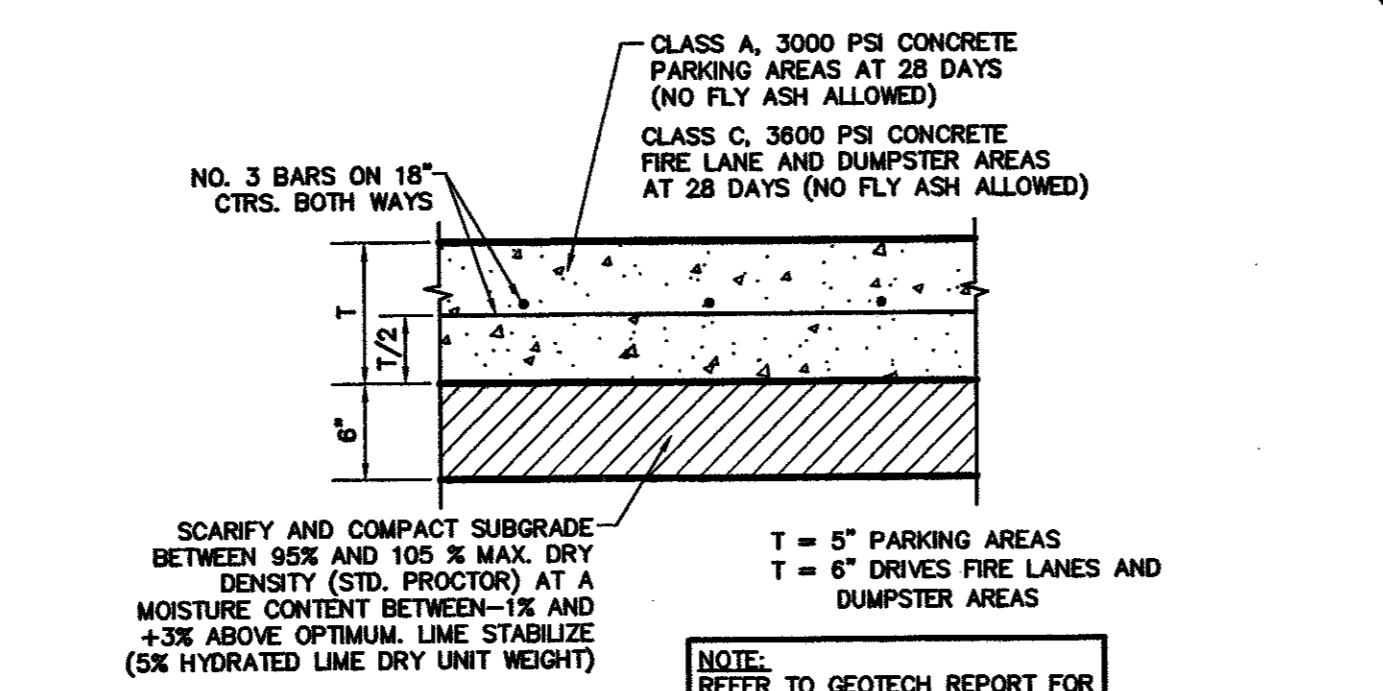
LEGEND

- B. BOLLARD
- EM. ELECTRIC METER
- PP. POWER POLE
- LS. LIGHT STANDARD
- WM. WATER METER
- WV. WATER VALVE
- ICV. IRRIGATION CONTROL VALVE
- FR. FIRE HYDRANT
- CH. CLEANOUT
- MH. MANHOLE
- TSC. TRAFFIC SIGNAL CONTROL
- TSP. TRAFFIC SIGNAL POLE
- TELE. TELEPHONE BOX
- FL. FLOOD LIGHT
- FP. FLAG POLE
- SIGN. TRAFFIC SIGN
- IRS. 1/2-INCH IRON ROD
- W/P. W/PACHECO KOCH CAP SET
- (C.M.) CONTROLLING MONUMENT
- PROPERTY LINE
- FENCE
- OH. OVERHEAD UTILITY LINE
- UWL. UNDERGROUND WATER LINE
- E. UNDERGROUND ELECTRIC LINE
- T. UNDERGROUND TELEPHONE LINE
- C. UNDERGROUND CABLE LINE
- S. UNDERGROUND SANITARY SEWER LINE

- PROPOSED 4" CLASS "A" CONCRETE SIDEWALK
- PROPOSED 5" CLASS "C" CONCRETE PAVEMENT LIGHT TRAFFIC AREAS
- PROPOSED 6" CLASS "C" CONCRETE PAVEMENT HEAVY TRAFFIC (FIRE LANES, SERVICE DRIVES)



- PAVING NOTES**
- ALL DIMENSIONS ARE FROM BACK OF CURB UNLESS OTHERWISE NOTED.
  - UNLESS OTHERWISE NOTED, ALL CONCRETE SHALL BE CLASS "A", (3000 PSI).
  - UNLESS NOTED, ALL FILL PLACED UNDER PAVING SHALL BE COMPACTED TO 95% STANDARD PROCTOR DENSITY IN 6 INCH LIFTS. REFER TO STRUCTURAL SPECIFICATION FOR FILL PLACED BENEATH BUILDING AREAS. ALL OTHER FILL AREAS TO BE COMPACTED TO 90% STANDARD PROCTOR.
  - THE CONTRACTOR SHALL SUBMIT A JOINT SPACING PLAN TO THE ENGINEER FOR APPROVAL. UNLESS NOTED, EXPANSION JOINT SPACING SHALL BE 90' MAXIMUM EACH WAY WITH NO KEYWAYS AND SAWED DUMMY JOINTS SHALL BE 15' EACH WAY.
  - TRANSVERSE CONSTRUCTION JOINTS SHALL BE USED AT THE END OF EACH DAY'S PAVING AND WHERE INTERRUPTIONS SUSPEND OPERATIONS FOR 30 MINUTES OR MORE.
  - ALL PAVEMENTS TO BE REMOVED SHALL BE SAWCUT TO A NEAT LINE, MINIMUM 1-1/2" DEEP, AND THE PAVEMENT REMOVED IN SUCH A MANNER AS TO PRESERVE THE EXISTING TRANSVERSE REINFORCING STEEL TO THE MAXIMUM EXTENT POSSIBLE.
  - ALL CURB AND GUTTER SHALL BE INTEGRAL WITH THE PAVEMENT AND HAVE THE SAME COMPRESSIVE STRENGTH.
  - PAVEMENT REINFORCEMENT SHALL BE #3 BARS, SPACED AT 18" CENTER TO CENTER EACH WAY EXCEPT WHERE NOTED IN THE PLANS.
  - BAR LAPS SHALL BE 30 DIAMETERS IN LENGTH.
  - ALL STRIPES SHALL BE 4" WIDE, UNLESS OTHERWISE NOTED.
  - INSTALLATION AND PLACEMENT OF IRRIGATION SLEEVES AND UTILITY CONDUITS SHALL BE IN ACCORDANCE WITH LANDSCAPE ARCHITECTS AND MEP PLANS.
  - SIDEWALKS AND ACCESSIBLE ROUTES SHALL HAVE A SLOPE NO GREATER THAN 5% AND A CROSS FALL NO GREATER THAN 2% UNLESS NOTED OTHERWISE.



THE SEAL APPEARING ON THIS DOCUMENT WAS AUTHORIZED BY STEVEN A. MARKUSSEN, P.E. 70090 ON 5/04/2005. ALTERATION OF A SEALED DOCUMENT WITHOUT PROPER NOTIFICATION TO THE RESPONSIBLE ENGINEER IS AN OFFENSE UNDER THE TEXAS ENGINEERING PRACTICE ACT.

NO.	DATE	REVISION				
Pacheco Koch Consulting Engineers 8350 N CENTRAL EXPWY SUITE 1000 DALLAS, TEXAS 75206 972.235.3031						
<b>PAVING PLAN &amp; DETAILS</b>						
<b>PARKING LOT</b>						
<b>GREENHILL SCHOOL ADDITION</b>						
<b>THOMAS L. CHENOWETH SURVEY, ABSTRACT NO. 273</b>						
<b>TOWN OF ADDISON, TEXAS</b>						
DESIGN	DRAWN	DATE	SCALE	NOTES	FILE	NO.
BJM	DRI	MAY 2005	1"=50'			<b>C4.0</b>

D:\DWG\2005 - 10-28\1082-03-024\DWG\1082-03.024CV2.DWG

GREENHILL SCHOOL