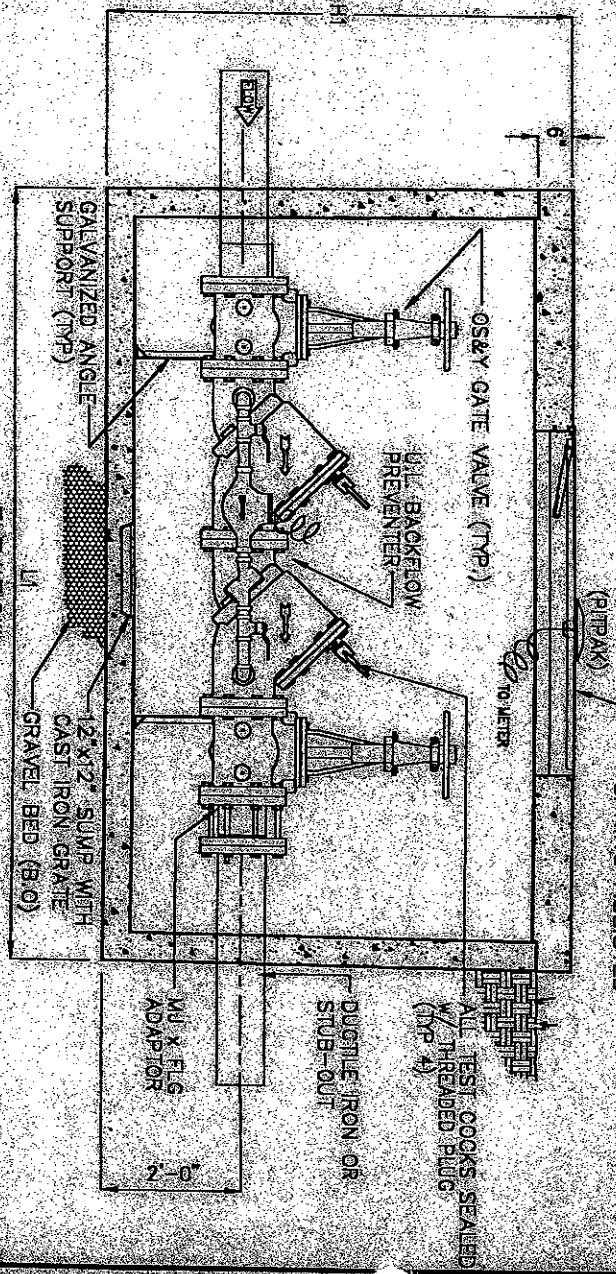


NAMEPLATE INDICATING:
 JFG. PARK EQUIP. CO.
 (800) 236-8041
 MODEL: DBBP-AD
 DATE MANUFACTURED

HERSEY - PIT-PAK
 3/4" DETECTOR METER W/
 2 SHUT-OFF VALVES AND
 BACKFLOW PREVENTER
 REMOTE REGISTER
 SENSOR TOUCH PAD
 (PITPAK)

MODEL	SIZE	L1	W1	H1	WEIGHT LBS.
DBBP-AD5	4"	7'-10"	4'-4"	6'-0"	9,000
DBBP-AD6	6"	7'-10"	4'-4"	6'-0"	9,200
DBBP-AD8	8"	8'-8"	5'-0"	6'-0"	15,000
DBBP-AD10	10"	9'-2"	5'-8"	7'-0"	18,000



Specifications

CONCRETE: Class 1 concrete with design strength of 4500 PSI at 28 days. Unit is of monolithic construction at floor and first stage of wall with sectional fiber to required depth.

REINFORCEMENT: Grade 60 reinforced. Steel rebar conforming to ASTM A615, on required centers or equal.

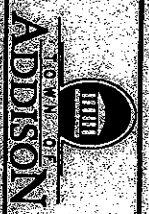
HATCHWAY: 1/4" Aluminum diamond plate cover with 1/4" extruded aluminum frame. Hatch to be furnished with 316 Stainless Steel snap lock & hinges.

Engineering Data

The Backflow assembly shall be factory assembled in vault & hydrostatically tested prior to delivery. Field excavation & preparation shall be complete prior to delivery. Pipe, valves and fittings of the assembly shall be approved by one or more of the following associations:



PROJECT :
 CUSTOMER :
 ENGINEER :
PARK
 EQUIPMENT COMPANY
 WTS 800-236-8041



4" THRU 10" DOUBLE DETECTOR CHECK BACKFLOW PREVENTER ASSEMBLY

SCALE : NONE	DWG. NO. : DBBP-AD	REV. : A
DATE : 8/97		