

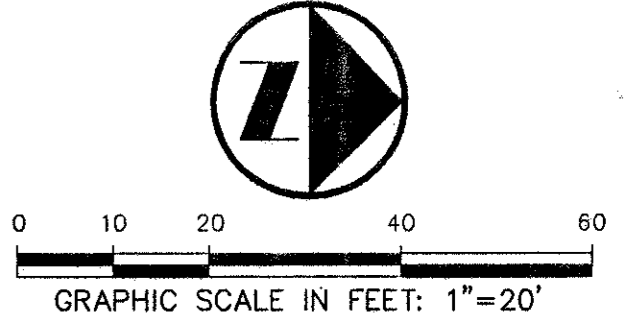
CONTACT:
MR ED KEAH, OPERATING SUPPORT SECTION
DISTRIBUTION DEPARTMENT, 2 WORKING
DAYS PRIOR TO EXCAVATING T.U. ELECTRIC
FACILITIES.
PHONE: (214)698-7239 OR (214)698-7207

CAUTION!!
UNDERGROUND TELEPHONE
IN AREA - CONTACT S.W.B.T.
48 HOURS PRIOR TO CONSTRUCTION
PHONE: 1-800-315-0440

CAUTION!!!
GAS LINE IN AREA-CONTACT
LONE STAR GAS 48 HOURS
PRIOR TO CONSTRUCTION
PHONE: (214)263-DIGG

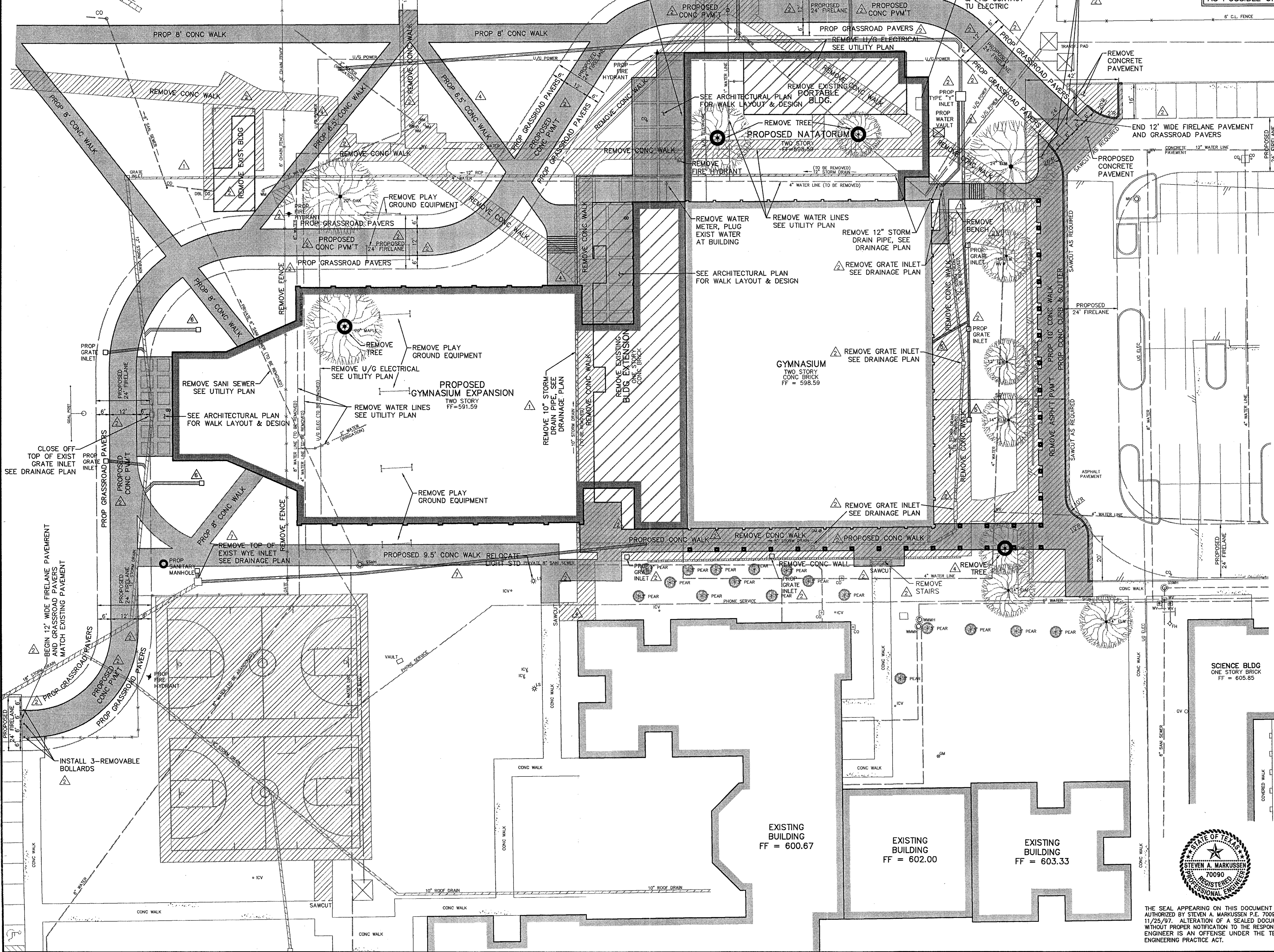
REMOVE EXISTING
SANI SEWER SEWER
SERVICE TO PORTABLE
BUILDING TO A POINT
5' SOUTH OF PROPOSED
NATATORUM & PLUG
CONTRATOR TO VERIFY
LOCATION

CONTRACTOR TO TAKE STEPS AS
REQUIRED TO PROTECT EXISTING
TREES AND ROOT SYSTEMS SHOWN
ON THIS PLAN TO THE FULLEST
EXTENT POSSIBLE. UNLESS TREES
THAT ARE MARKED FOR REMOVAL
MAINTAIN EXISTING GRADE AS CLOSE
AS POSSIBLE UNDER DRIP LINE



LEGEND

| | |
|-----|----------------|
| FW | FIRE HYDRANT |
| PP | POWER POLE |
| LS | LIGHT STANDARD |
| WM | WATER METER |
| WV | WATER VALVE |
| CO | CLEANOUT |
| MH | MANHOLE |
| GM | GAS METER |
| --- | PROPERTY LINE |



- GENERAL NOTES:**
1. SIZE AND LOCATION OF ALL UNDERGROUND UTILITIES HAVE BEEN REPRODUCED FROM PLANS ON FILE WITH THE CITY OF ADDISON, TEXAS DEPARTMENT OF TRANSPORTATION AND PUBLIC UTILITY COMPANIES. CONTRACTOR TO VERIFY LOCATION OF ALL UTILITIES PRIOR TO CONSTRUCTION.
 2. ALL PROPERTY CORNER MONUMENTS ON SUBJECT TRACT ARE 1/2-INCH IRON RODS WITH "PACHECO KOCH" CAPS SET UNLESS OTHERWISE NOTED.
 3. REFER TO STANDARD DETAILS AND GENERAL NOTES SHEET FOR PAVING, DRAINAGE AND UTILITY STANDARD DETAILS AND GENERAL NOTES.
 4. REFER TO ARCHITECTURAL/M.E.P. PLANS FOR COORDINATION OF SIGHT LIGHTING FOR LOCATIONS AND REQUIREMENTS.
 5. REFER TO ARCHITECTURAL PLANS FOR DETAILS AND DIMENSIONS OF THE PROPOSED BUILDING, DUMPSTER AREA AND OVERHANGS.
 6. COORDINATE WITH THE CONSTRUCTION MANAGER FOR EXACT SIZE AND LOCATION OF THE SITE SIGNAGE AND STRIPING.
 7. ALL DIMENSIONS ARE FACE OF CURB TO FACE OF CURB UNLESS OTHERWISE INDICATED.
 8. CONTRACTOR TO PROVIDE EROSION CONTROL MEASURES ALONG PERIMETER OF WORK AREA.
 9. BARRACADING AND PROJECT SIGNS SHALL CONFORM TO "STATE OF TEXAS DEPARTMENT OF HIGHWAYS AND PUBLIC TRANSPORTATION BARRACADING AND CONSTRUCTION STANDARDS".
 10. SEE LANDSCAPING PLAN FOR PROPOSED SIDEWALKS AND FENCE DESIGN AND LOCATION.
 11. SEE REPEAT OF THE GREEN HILL SCHOOL ADDITION, DATED MAY 1997 FOR SPECIFIC LOCATION OF PROPOSED FIRE LANE AND UTILITY EASEMENTS.
 12. ITEMS TO BE REMOVED FOR CONSTRUCTION ARE TO REMAIN THE PROPERTY OF GREEN HILL SCHOOL.

- △ REVISED: NOV 13, 1998
- △ REVISED: OCT. 5, 1998
- △ REVISED: JUNE 3, 1998
- △ REVISED: NOV 25, 1997
- △ REVISED: OCT 24, 1997
- △ REVISED: SEP 8, 1997
- △ REVISED: JUN 30, 1997

PACHECO KOCH Consulting Engineers, Inc. 9401 LBJ Freeway, Suite 300
Dallas, Texas 75243
Civil Engineering • Land Surveying (972) 235-3031



DIMENSIONAL CONTROL PLAN
BUILDING EXPANSION
GREENHILL SCHOOL
ABST No. 273, DALLAS COUNTY
CITY OF ADDISON, TEXAS

| DESIGN | DRAWN | DATE | SCALE | NOTES | FILE | NO. |
|--------|-------|----------|--------|-------|------|-----|
| SAM | BB | SEP 1997 | 1"=20' | | | C-1 |

THE SEAL APPEARING ON THIS DOCUMENT WAS AUTHORIZED BY STEVEN A. MARKUSEN P.E. 70090 ON 11/25/97. ALTERATION OF A SEALED DOCUMENT WITHOUT PROPER NOTIFICATION TO THE RESPONSIBLE ENGINEER IS AN OFFENSE UNDER THE TEXAS ENGINEERING PRACTICE ACT.

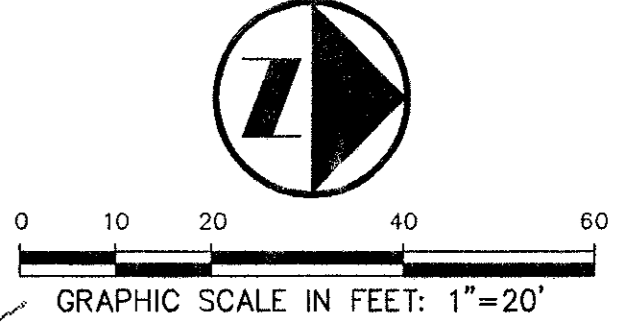
MOD. TIME: 11/17/98 09:31 AM PLOT BY: Ron Lewis PLOT TIME: 11/17/98 09:31 AM DWG NAME: 1082-42a.dwg

CONTACT:
MR ED KEAH, OPERATING SUPPORT SECTION
DISTRIBUTION DEPARTMENT, 2 WORKING
DAYS PRIOR TO EXCAVATING T.U. ELECTRIC
FACILITIES.
PHONE: (214)698-7239 OR (214)698-7207

CAUTION!!!
UNDERGROUND TELEPHONE
IN AREA - CONTACT S.W.B.T.
48 HOURS PRIOR TO CONSTRUCTION
PHONE: 1-800-315-0440

CAUTION!!!
GAS LINE IN AREA-CONTACT
LONE STAR GAS 48 HOURS
PRIOR TO CONSTRUCTION
PHONE: (214)263-DIG6

CONTRACTOR TO TAKE STEPS AS
REQUIRED TO PROTECT EXISTING
TREES AND ROOT SYSTEMS SHOWN
ON THIS PLAN TO THE FULLEST
EXTENT POSSIBLE. UNLESS TREES
THAT ARE MARKED FOR REMOVAL
MAINTAIN EXISTING GRADE AS CLOSE
AS POSSIBLE UNDER DRIP LINE



LEGEND

- FH ◊ FIRE HYDRANT
- PP • POWER POLE
- LS • LIGHT STANDARD
- WM • WATER METER
- WV • WATER VALVE
- CQ • CLEANOUT
- MH ◉ MANHOLE
- GM • GAS METER
- PROPERTY LINE
- 613 — EXISTING CONTOUR
- EL. 612.29 — EXISTING SPOT ELEVATION
- TO 612.39 — EXISTING TOP OF CURB ELEVATION
- 611.92 — EXISTING GUTTER ELEVATION
- 613 — PROPOSED CONTOUR
- TC 614.5 — PROPOSED TOP OF CURB ELEVATION
- G 614.0 — PROPOSED GUTTER ELEVATION
- EL. 614.5 — PROPOSED SPOT ELEVATION
- PROPOSED DRAINAGE FLOW DIRECTION
- PROPOSED DRAINAGE DIVIDE
- EROSION CONTROL
- △ INDICATES EMERGENCY OVERTFLOW

DRAINAGE AREA CALCULATIONS: DA 2

| DRAINAGE AREA No. | AREA (acres) | C | Tc (minutes) | I ₁₀₀ (Inch/hour) | Q ₁₀₀ (cfs) | REMARKS |
|-------------------|--------------|------|--------------|------------------------------|------------------------|---------------------------------|
| DA 1 | 1.88 | 0.90 | 10 | 8.74 | 14.79 | TYPE "Y" INLET |
| DA 2 | 0.05 | 0.90 | 10 | 8.74 | 0.39 | GRATE INLET |
| DA 3 | 0.10 | 0.90 | 10 | 8.74 | 0.79 | GRATE INLET |
| DA 4 | 0.04 | 0.90 | 10 | 8.74 | 0.31 | GRATE INLET |
| DA 5 | 0.28 | 0.90 | 10 | 8.74 | 2.20 | GRATE INLET |
| DA 6 | 0.17 | 0.90 | 10 | 8.74 | 1.34 | GRATE INLETS |
| DA 7 | 0.29 | 0.90 | 10 | 8.74 | 2.28 | GRATE INLETS |
| DA 8 | 0.81 | 0.90 | 10 | 8.74 | 6.37 | GRATE INLET |
| DA 9 | 0.05 | 0.90 | 10 | 8.74 | 0.39 | GRATE INLET |
| DA 10 | 0.10 | 0.90 | 10 | 8.74 | 0.79 | GRATE INLET |
| DA 11A | 0.09 | 0.90 | 10 | 8.74 | 0.74 | COLLECT UNDERGROUND W/DA 1 |
| DA 11B | 0.09 | 0.90 | 10 | 8.74 | 0.74 | COLLECT UNDERGROUND W/DA 5 |
| DA 12 | 0.19 | 0.90 | 10 | 8.74 | 1.49 | COLLECT UNDERGROUND W/DA 9 & 16 |
| DA 13 | 0.16 | 0.90 | 10 | 8.74 | 1.26 | COLLECT UNDERGROUND W/DA 3 & 4 |
| DA 14 | 0.26 | 0.90 | 10 | 8.74 | 2.05 | COLLECT UNDERGROUND W/DA 6 |
| DA 15 | 0.24 | 0.90 | 10 | 8.74 | 1.89 | COLLECT UNDERGROUND W/DA 8 |
| DA 16 | 0.04 | 0.90 | 10 | 8.74 | 0.31 | GRATE INLET |

- BENCH MARKS:**
- BM #2: Top nut of FH near west line of site 6754 north of southwest corner of site. Elev. 601.31
 - BM #3: Cut "+" in walk on outside of curved drive near southeast corner of lower school. Elev. 586.06
 - BM #4: "□" cut - west end conc. headwall, north side Spring Valley, at southeast corner campus. Elev. 578.47
 - BM #5: "□" cut in walk at southeast corner intersection of drive along south side of preschool building and north-south drive into site from Spring Valley. Elev. 588.20
 - BM #6: "□" cut at southwest corner basketball courts, southeast of gymnasium. Elev. 597.48
 - BM #7: "□" cut, southeast corner transformer pad, northeast of tennis courts. Elev. 601.42
 - BM #8: Top nut of FH at west end of drive along north side of campus. Elev. 609.80
 - BM #9: "□" cut at NEC of electric MH on north side cafeteria, south side of drive along north side of campus. Elev. 602.80
 - BM #10: "□" cut on conc. step near northwest corner of upper school. Elev. 598.85
 - BM #11: "□" cut on conc step on walk exiting west side of library. Elev. 596.44
 - BM #12: "□" cut at intersection of walk along west side lower school and walk along south side lower school. Elev. 587.78

- △ REVISED: OCT. 5, 1998
- △ REVISED: JUNE 3, 1998
- △ REVISED: NOV 25, 1997
- △ REVISED: OCT 24, 1997 MODIFIED WALK LAYOUT
- △ REVISED: SEP 8, 1997
- △ REVISED: NOV. 16, 1998
- △ REVISED: JUN 30, 1997

PACHECO KOCH Consulting Engineers, Inc. 9401 LBJ Freeway, Suite 300
Dallas, Texas 75243
Civil Engineering • Land Surveying (972) 235-3031



THE SEAL APPEARING ON THIS DOCUMENT WAS AUTHORIZED BY STEVEN A. MARKUSSEN P.E. 70090 ON 11/25/97. ALTERATION OF A SEALED DOCUMENT WITHOUT PROPER NOTIFICATION TO THE RESPONSIBLE ENGINEER IS AN OFFENSE UNDER THE TEXAS ENGINEERING PRACTICE ACT.

GRADING PLAN
BUILDING EXPANSION
GREENHILL SCHOOL
ABST No. 273, DALLAS COUNTY
TOWN OF ADDISON, TEXAS

| DESIGN | DRAWN | DATE | SCALE | NOTES | FILE | NO. |
|--------|-------|----------|--------|-------|------|-----|
| SAM | BB | SEP 1997 | 1"=20' | | | C-2 |

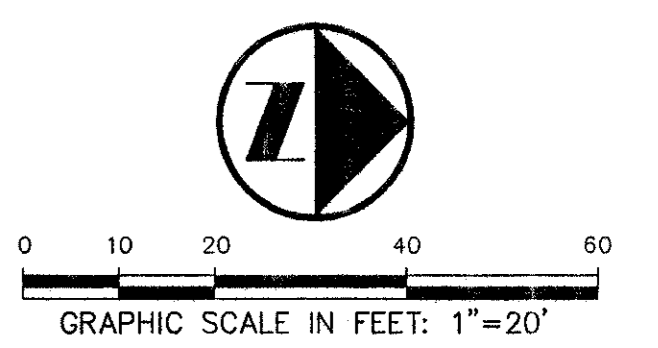
MOD. TIME: 11/16/98 01:48 PM PLOT BY: Ron Lewis PLOT TIME: 11/17/98 08:33 AM DWG NAME: 1082-426.dwg

CONTACT:
MR ED KEAH, OPERATING SUPPORT SECTION
DISTRIBUTION DEPARTMENT, 2 WORKING
DAYS PRIOR TO EXCAVATING T.U. ELECTRIC
FACILITIES.
PHONE: (214)698-7239 OR (214)698-7207

CAUTION!!
UNDERGROUND TELEPHONE
IN AREA - CONTACT S.W.B.T.
48 HOURS PRIOR TO CONSTRUCTION
PHONE: 1-800-315-0440

CAUTION!!
GAS LINE IN AREA-CONTACT
LONE STAR GAS 48 HOURS
PRIOR TO CONSTRUCTION
PHONE: (214)263-DIG6

CONTRACTOR TO TAKE STEPS AS
REQUIRED TO PROTECT EXISTING
TREES AND ROOT SYSTEMS SHOWN
ON THIS PLAN TO THE FULLEST
EXTENT POSSIBLE. UNLESS TREES
THAT ARE MARKED FOR REMOVAL
MAINTAIN EXISTING GRADE AS CLOSE
AS POSSIBLE UNDER DRIP LINE



LEGEND

| | |
|-----|--------------------------|
| FH | FIRE HYDRANT |
| PP | POWER POLE |
| LS | LIGHT STANDARD |
| WM | WATER METER |
| WV | WATER VALVE |
| CO | CLEANOUT |
| MH | MANHOLE |
| GM | GAS METER |
| --- | PROPERTY LINE |
| --- | PROPOSED DRAINAGE DIVIDE |

NOTE:
SEE DETAIL SHEET FOR DRAINAGE
NOTES AND STANDARD DETAILS.

NOTE:
GRATE INLETS TO BE INSTALLED ARE
TO BE "Brooks Products, Inc., PRECAST
CONCRETE PRODUCTS" 18"x18"x24" CATCH
BASIN W/GRATE OR APPROVED EQUAL.

DRAINAGE AREA CALCULATIONS: DA 2

| DRAINAGE AREA No. | AREA (acres) | C | Tc (minutes) | I100 (inch/hour) | Q100 (cfs) | REMARKS |
|-------------------|--------------|------|--------------|------------------|------------|---------------------------------|
| DA 1 | 1.88 | 0.90 | 10 | 8.74 | 14.79 | TYPE "Y" INLET |
| DA 2 | 0.05 | 0.90 | 10 | 8.74 | 0.39 | GRATE INLET |
| DA 3 | 0.10 | 0.90 | 10 | 8.74 | 0.79 | GRATE INLET |
| DA 4 | 0.04 | 0.90 | 10 | 8.74 | 0.31 | GRATE INLET |
| DA 5 | 0.28 | 0.90 | 10 | 8.74 | 2.20 | GRATE INLET |
| DA 6 | 0.17 | 0.90 | 10 | 8.74 | 1.34 | GRATE INLETS |
| DA 7 | 0.29 | 0.90 | 10 | 8.74 | 2.28 | GRATE INLETS |
| DA 8 | 0.81 | 0.90 | 10 | 8.74 | 6.37 | GRATE INLET |
| DA 9 | 0.05 | 0.90 | 10 | 8.74 | 0.39 | GRATE INLET |
| DA 10 | 0.10 | 0.90 | 10 | 8.74 | 0.79 | GRATE INLETS |
| DA 11A | 0.09 | 0.90 | 10 | 8.74 | 0.74 | COLLECT UNDERGROUND W/DA 1 |
| DA 11B | 0.09 | 0.90 | 10 | 8.74 | 0.74 | COLLECT UNDERGROUND W/DA 5 |
| DA 12 | 0.19 | 0.90 | 10 | 8.74 | 1.49 | COLLECT UNDERGROUND W/DA 9 & 16 |
| DA 13 | 0.16 | 0.90 | 10 | 8.74 | 1.26 | COLLECT UNDERGROUND W/DA 3 & 4 |
| DA 14 | 0.26 | 0.90 | 10 | 8.74 | 2.05 | COLLECT UNDERGROUND W/DA 6 |
| DA 15 | 0.24 | 0.90 | 10 | 8.74 | 1.89 | COLLECT UNDERGROUND W/DA 8 |
| DA 16 | 0.04 | 0.90 | 10 | 8.74 | 0.31 | GRATE INLET |

BENCH MARKS:

- BM #2: Top nut of FH near west line of site 675± north of southwest corner of site. Elev. 601.31
- BM #3: Cut "+" in walk on outside of curved drive near southeast corner of lower school. Elev. 586.06
- BM #4: "□" cut - west end conc. headwall, north side Spring Valley, at southeast corner campus. Elev. 578.47
- BM #5: "□" cut in walk at southeast corner intersection of drive along south side of preschool building and north-south drive into site from Spring Valley. Elev. 589.20
- BM #6: "□" cut at southwest corner basketball courts, southeast of gymnasium. Elev. 597.48
- BM #7: "□" cut, southeast corner transformer pad, northeast of tennis courts. Elev. 601.42
- BM #8: Top nut of FH at west end of drive along north side of campus. Elev. 609.80
- BM #9: "□" cut at NEC of electric MH on north side cafeteria, south side of drive along north side of campus. Elev. 602.80
- BM #10: "□" cut on conc. step near northwest corner of upper school. Elev. 598.85
- BM #11: "□" cut on conc. step on walk exiting west side of library. Elev. 596.44
- BM #12: "□" cut at intersection of walk along west side lower school and walk along south side lower school. Elev. 587.78

- △ REVISED: NOV 13, 1998
- △ REVISED: OCT. 5, 1998
- △ REVISED: JUNE 3, 1998
- △ REVISED: NOV 25, 1997
- △ REVISED: OCT 24, 1997
- △ MODIFIED WALK LAYOUT
- △ REVISED: SEP 8, 1997
- △ REVISED: JUN 30, 1997

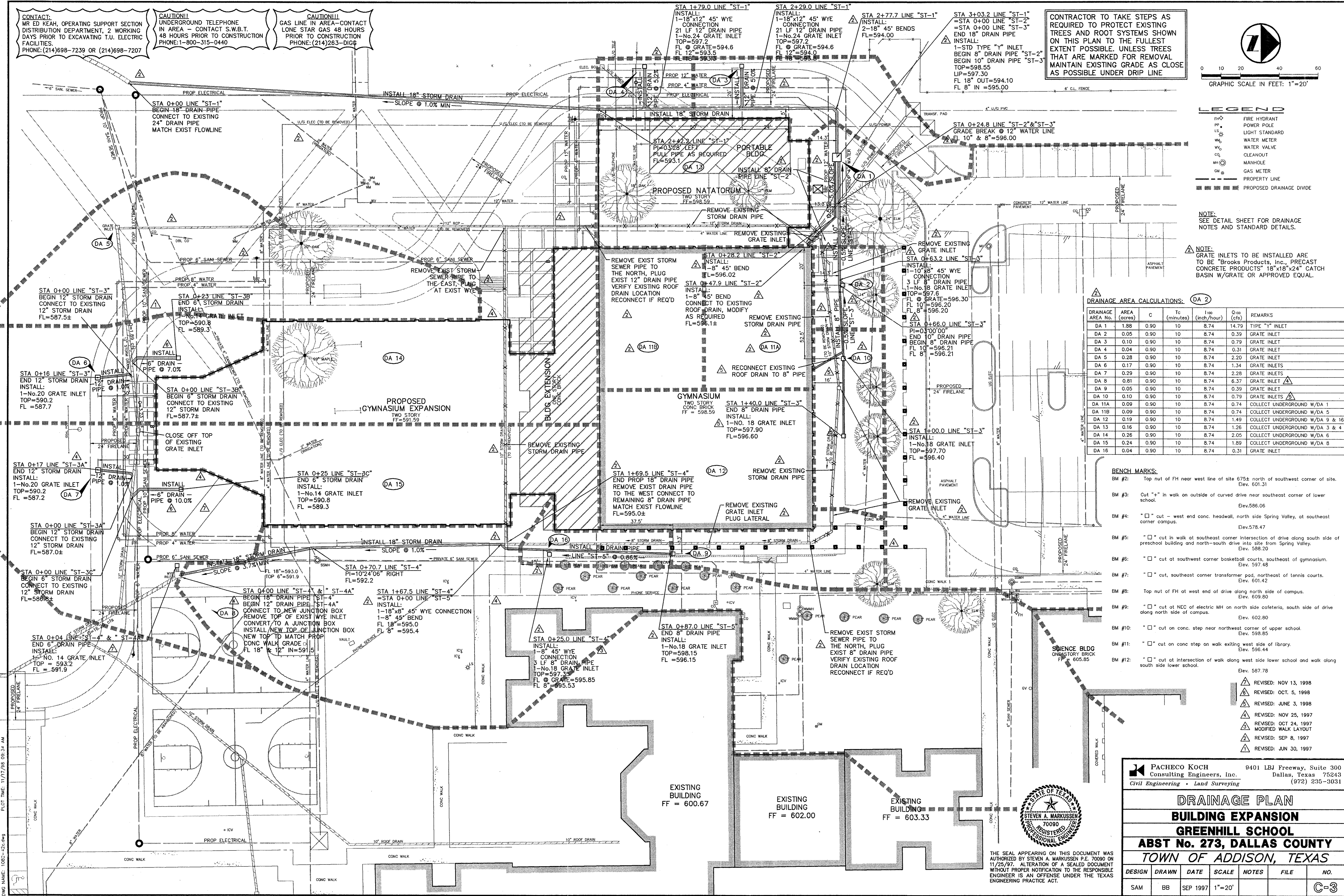
PACHECO KOCH Consulting Engineers, Inc. 9401 LBJ Freeway, Suite 300
Dallas, Texas 75243
Civil Engineering • Land Surveying (972) 235-3031



THE SEAL APPEARING ON THIS DOCUMENT WAS
AUTHORIZED BY STEVEN A. MARKUSSEN P.E. 70090 ON
11/25/97. ALTERATION OF A SEALED DOCUMENT
WITHOUT PROPER NOTIFICATION TO THE RESPONSIBLE
ENGINEER IS AN OFFENSE UNDER THE TEXAS
ENGINEERING PRACTICE ACT.

DRAINAGE PLAN
BUILDING EXPANSION
GREENHILL SCHOOL
ABST No. 273, DALLAS COUNTY
TOWN OF ADDISON, TEXAS

| DESIGN | DRAWN | DATE | SCALE | NOTES | FILE | NO. |
|--------|-------|----------|--------|-------|------|-----|
| SAM | BB | SEP 1997 | 1"=20' | | | C-3 |



CONTACT:
MR ED KEAH, OPERATING SUPPORT SECTION
DISTRIBUTION DEPARTMENT, 2 WORKING
DAYS PRIOR TO EXCAVATING T.U. ELECTRIC
FACILITIES.
PHONE: (214)698-7239 OR (214)698-7207

CAUTION!!
UNDERGROUND TELEPHONE
IN AREA - CONTACT S.W.B.T.
48 HOURS PRIOR TO CONSTRUCTION
PHONE: 1-800-315-0440

CAUTION!!
GAS LINE IN AREA-CONTACT
LONE STAR GAS 48 HOURS
PRIOR TO CONSTRUCTION
PHONE: (214)263-1010

STA 0+00 LINE "W-2"
BEGIN PROP 12" WATER
INSTALL:
1-12" VALVE
1-12" PLUG
CONN. TO EX. 12" WATER
REMOVE EXIST 12"
TO THE NORTH

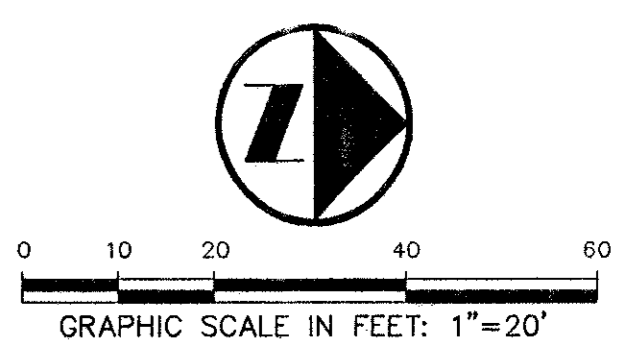
STA 0+64.8 LINE "W-2"
INSTALL:
1-12" 90° BEND

CONNECT EXIST 1" WATER
TO PROP 4" WATER LINE
RELOCATE WATER METER
REMOVE EXIST 1" WATER
TO THE EAST

STA 1+98.2 LINE "W-2"
INSTALL:
1-12" 90° BEND

END PROP ELECTRICAL
CONNECT TO EXISTING
ELECTRICAL REMOVE
EXIST ELECTRICAL
TO THE EAST

CONTRACTOR TO TAKE STEPS AS
REQUIRED TO PROTECT EXISTING
TREES AND ROOT SYSTEMS SHOWN
ON THIS PLAN TO THE FULLEST
EXTENT POSSIBLE. UNLESS TREES
THAT ARE MARKED FOR REMOVAL
MAINTAIN EXISTING GRADE AS CLOSE
AS POSSIBLE UNDER DRIP LINE



LEGEND

| | |
|---|----------------|
| ⊕ | FIRE HYDRANT |
| ⊙ | POWER POLE |
| ⊕ | LIGHT STANDARD |
| ⊕ | WATER METER |
| ⊕ | WATER VALVE |
| ⊕ | CLEANOUT |
| ⊕ | MANHOLE |
| ⊕ | GAS METER |
| ⊕ | PROPERTY LINE |

NOTE:
SEE DETAIL SHEET FOR WATER &
SANITARY SEWER NOTES AND
STANDARD DETAILS.

NOTE:
PROPOSED WATER LINES SHALL BE CONCRETE
ENCASED 10 L.F. EACH WAY AT SEWER & STORM
DRAIN CROSSINGS. WHERE PROPOSED SEWER &/OR
STORM DRAINS CROSS EXISTING WATER LINES,
THE EXISTING LINE SHALL BE CONCRETE ENCASED
IN THE SAME MANNER.

NOTE:
PROPOSED ELECTRICAL TO BE INSTALLED BY CUSTOMER.
INSTALL 2-4 INCH SCH 40 PVC CONDUITS W/PULL WIRE
(GRAY ELEC GRADE) 39 INCH MINIMUM DEPTH REQUIRED.
ALL BENDS TO BE LONG SWEEP - C.I. (36 INCH MINIMUM)
PROPOSED ELECTRICAL MANHOLES TO BE 4'x8' VAULTS
SUPPLIED BY TU ELECTRIC COMPANY AND INSTALLED
BY CUSTOMER. ALL INSTALLATIONS MUST MEET TU ELECTRIC
COMPANY'S SPECIFICATIONS & CLEARANCE REQUIREMENTS.

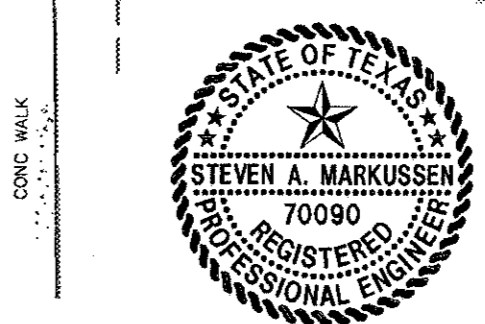
- BENCH MARKS:**
- BM #2: Top nut of FH near west line of site 675± north of southwest corner of site. Elev. 601.31
 - BM #3: Cut "+" in walk on outside of curved drive near southeast corner of lower school. Elev. 586.06
 - BM #4: "□" cut - west end conc. headwall, north side Spring Valley, at southeast corner campus. Elev. 578.47
 - BM #5: "□" cut in walk at southeast corner intersection of drive along south side of preschool building and north-south drive into site from Spring Valley. Elev. 588.20
 - BM #6: "□" cut at southwest corner basketball courts, southeast of gymnasium. Elev. 597.48
 - BM #7: "□" cut, southeast corner transformer pad, northeast of tennis courts. Elev. 601.42
 - BM #8: Top nut of FH at west end of drive along north side of campus. Elev. 609.80
 - BM #9: "□" cut at NEC of electric MH on north side cafeteria, south side of drive along north side of campus. Elev. 602.80
 - BM #10: "□" cut on conc. step near northwest corner of upper school. Elev. 598.85
 - BM #11: "□" cut on conc step on walk exiting west side of library. Elev. 596.44
 - BM #12: "□" cut at intersection of walk along west side lower school and walk along south side lower school. Elev. 587.78

- △ REVISED: NOV. 13, 1998
- △ REVISED: OCT. 5, 1998
- △ REVISED: JUNE 3, 1998
- △ REVISED: NOV 25, 1997
- △ REVISED: OCT 24, 1997
- △ REVISED: SEP 8, 1997
- △ REVISED: JUN 30, 1997

PACHECO KOCH Consulting Engineers, Inc. 9401 LBJ Freeway, Suite 300 Dallas, Texas 75243 (972) 235-3031
Civil Engineering • Land Surveying

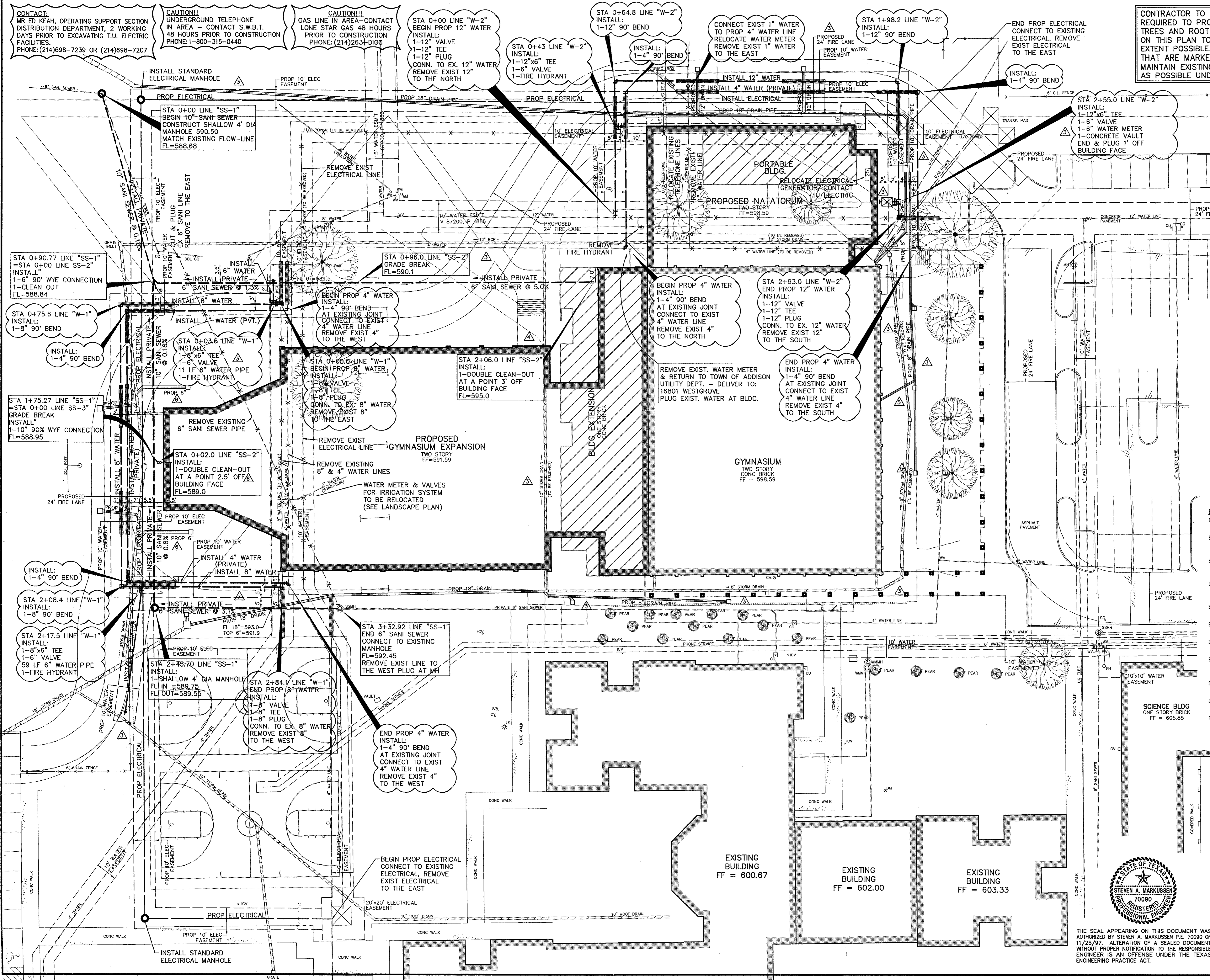
SITE UTILITY PLAN
BUILDING EXPANSION
GREENHILL SCHOOL
ABST No. 273, DALLAS COUNTY
TOWN OF ADDISON, TEXAS

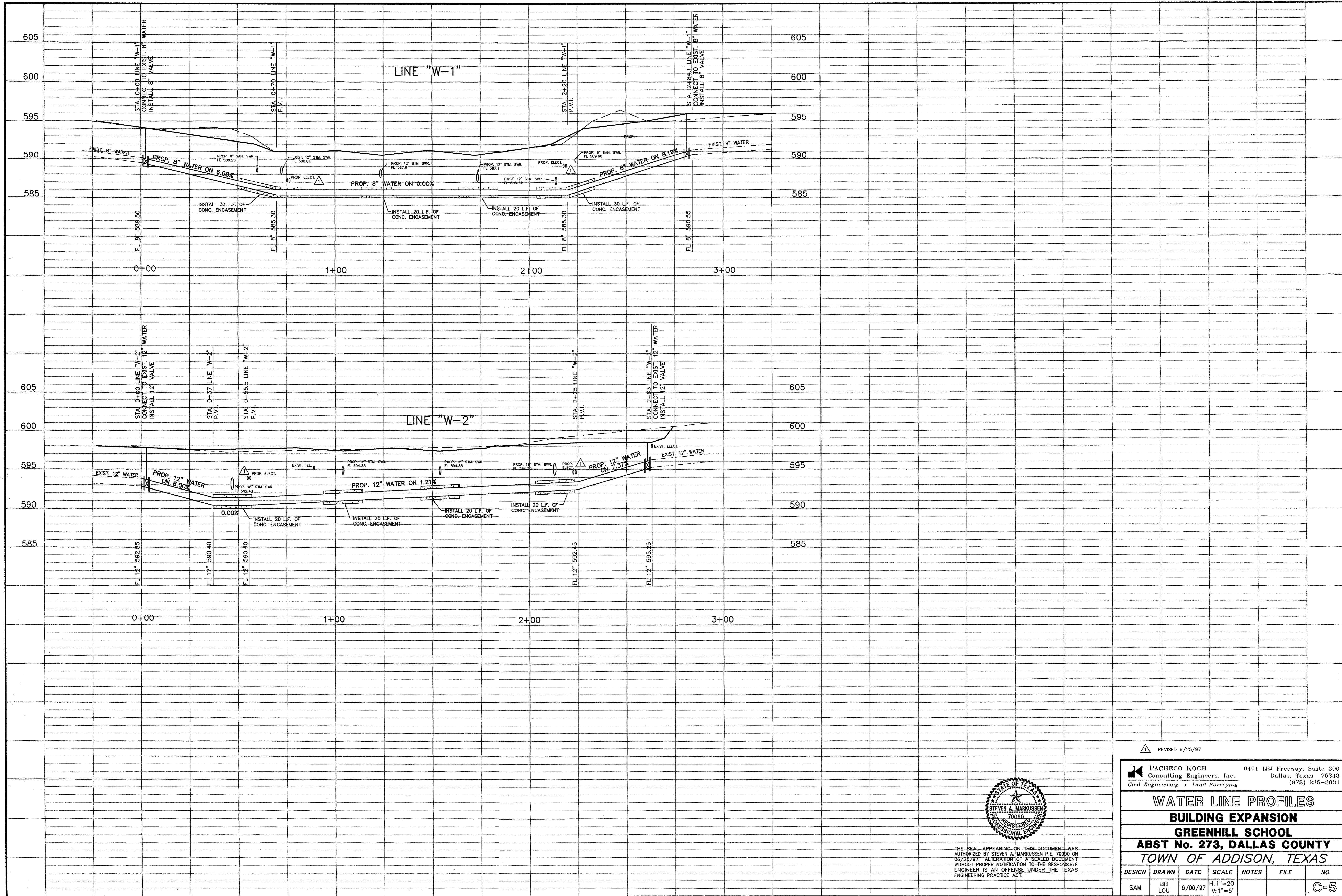
| DESIGN | DRAWN | DATE | SCALE | NOTES | FILE | NO. |
|--------|-----------|----------|--------|-------|------|-----|
| SAM | BB SGS | AUG 1997 | 1"=20' | | | C-4 |



THE SEAL APPEARING ON THIS DOCUMENT WAS
AUTHORIZED BY STEVEN A. MARKUSSEN P.E. 70090 ON
11/25/97. ALTERATION OF A SEALED DOCUMENT
WITHOUT PROPER NOTIFICATION TO THE RESPONSIBLE
ENGINEER IS AN OFFENSE UNDER THE TEXAS
ENGINEERING PRACTICE ACT.

MOD. TIME: 11/16/98 01:38 PM PLOT BY: Ron Lewis PLOT TIME: 11/17/98 09:34 AM
DWG NAME: 1082-97.054





REVISD 6/25/97

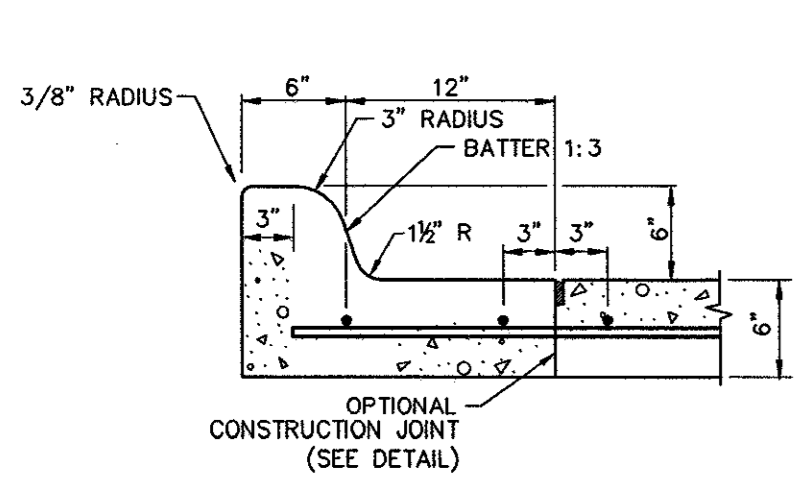
PACHECO KOCH Consulting Engineers, Inc. 9401 LBJ Freeway, Suite 300
 Dallas, Texas 75243
 Civil Engineering • Land Surveying (972) 235-3031



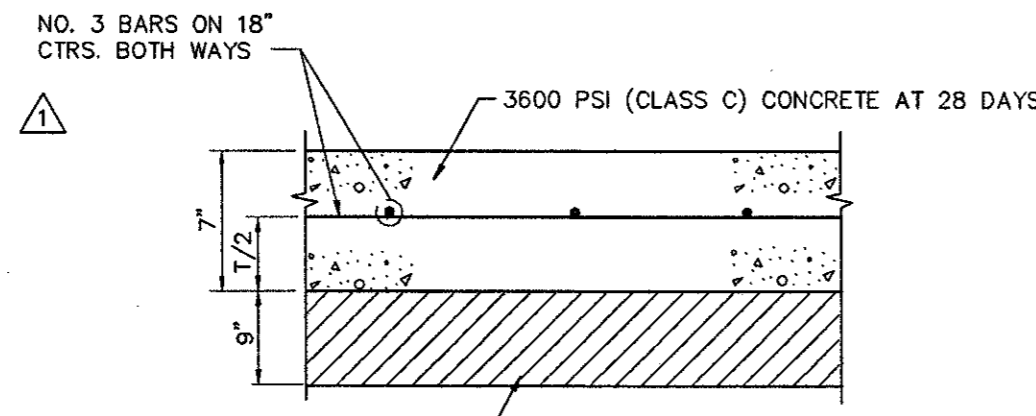
THE SEAL APPEARING ON THIS DOCUMENT WAS AUTHORIZED BY STEVEN A. MARKUSSEN P.E. 70090 ON 06/25/97 "ALTERATION OF A SEALED DOCUMENT WITHOUT PROPER NOTIFICATION TO THE RESPONSIBLE ENGINEER IS AN OFFENSE UNDER THE TEXAS ENGINEERING PRACTICE ACT."

WATER LINE PROFILES
BUILDING EXPANSION
GREENHILL SCHOOL
ABST No. 273, DALLAS COUNTY
TOWN OF ADDISON, TEXAS

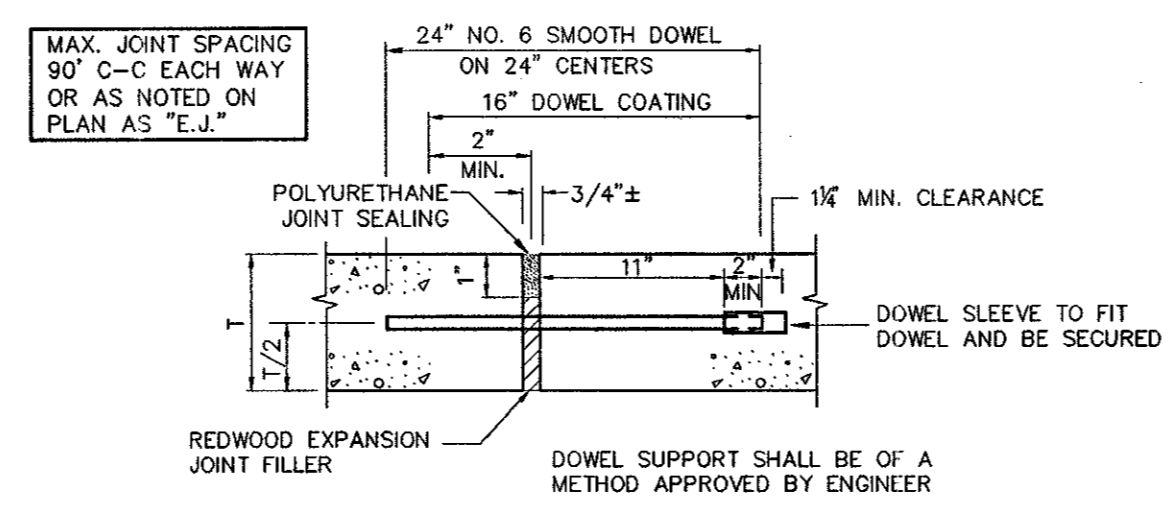
| DESIGN | DRAWN | DATE | SCALE | NOTES | FILE | NO. |
|--------|-----------|---------|-----------------------|-------|------|-----|
| SAM | BB LOU | 6/06/97 | H: 1"=20' V: 1"=5' | | | C-5 |



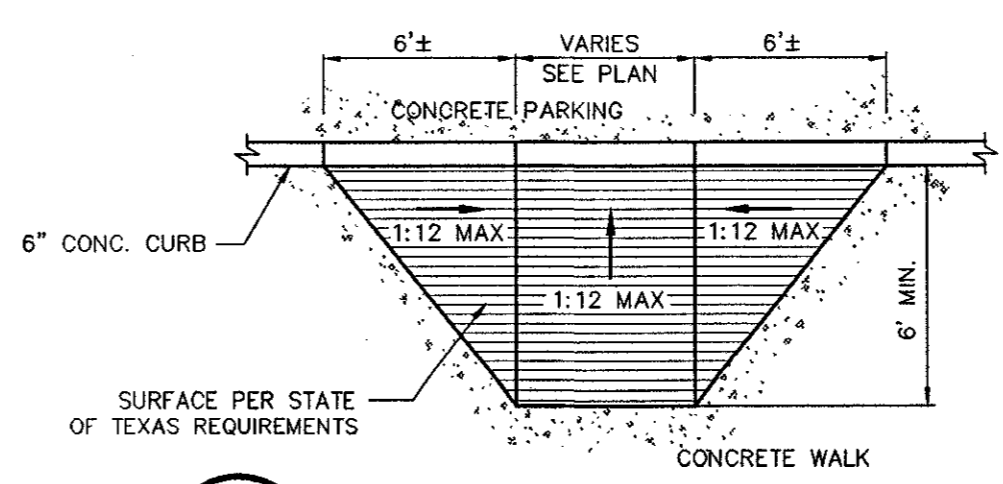
1 CURB DETAIL
NOT TO SCALE



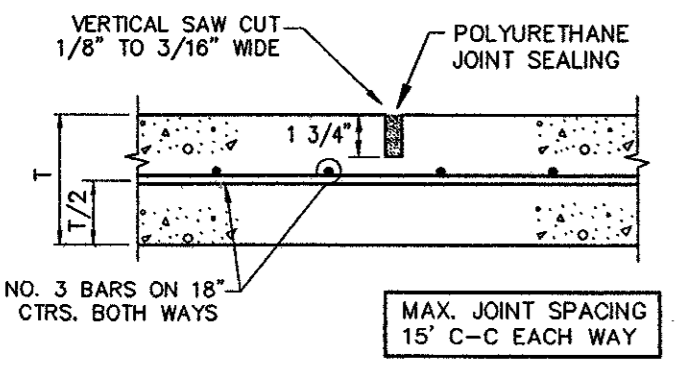
2 PAVEMENT SECTION
NOT TO SCALE



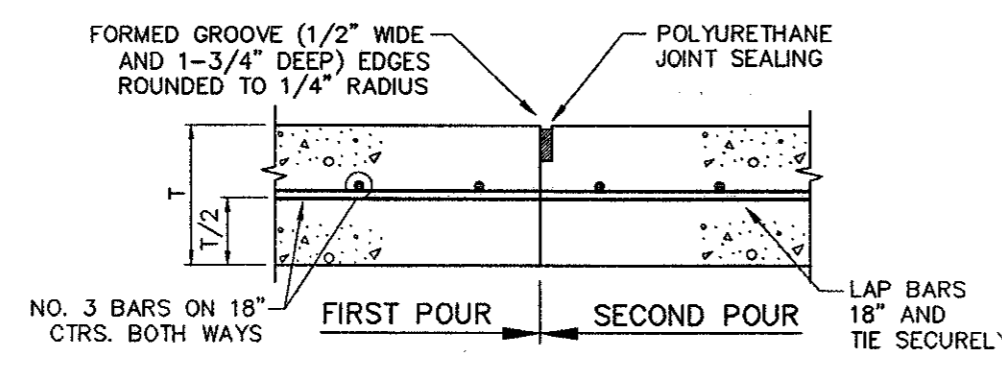
3 EXPANSION JOINT
NOT TO SCALE



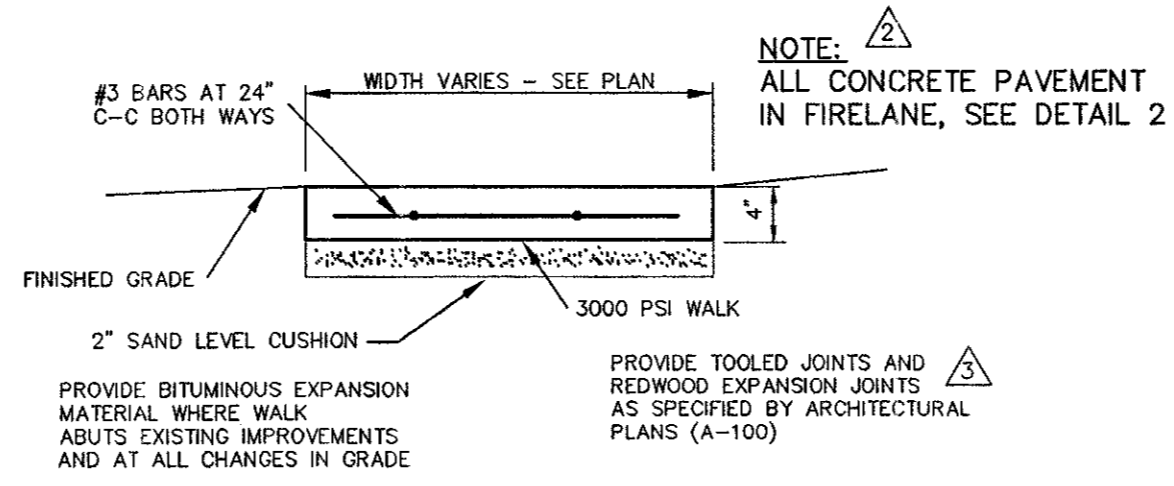
4 ACCESS RAMP
NOT TO SCALE



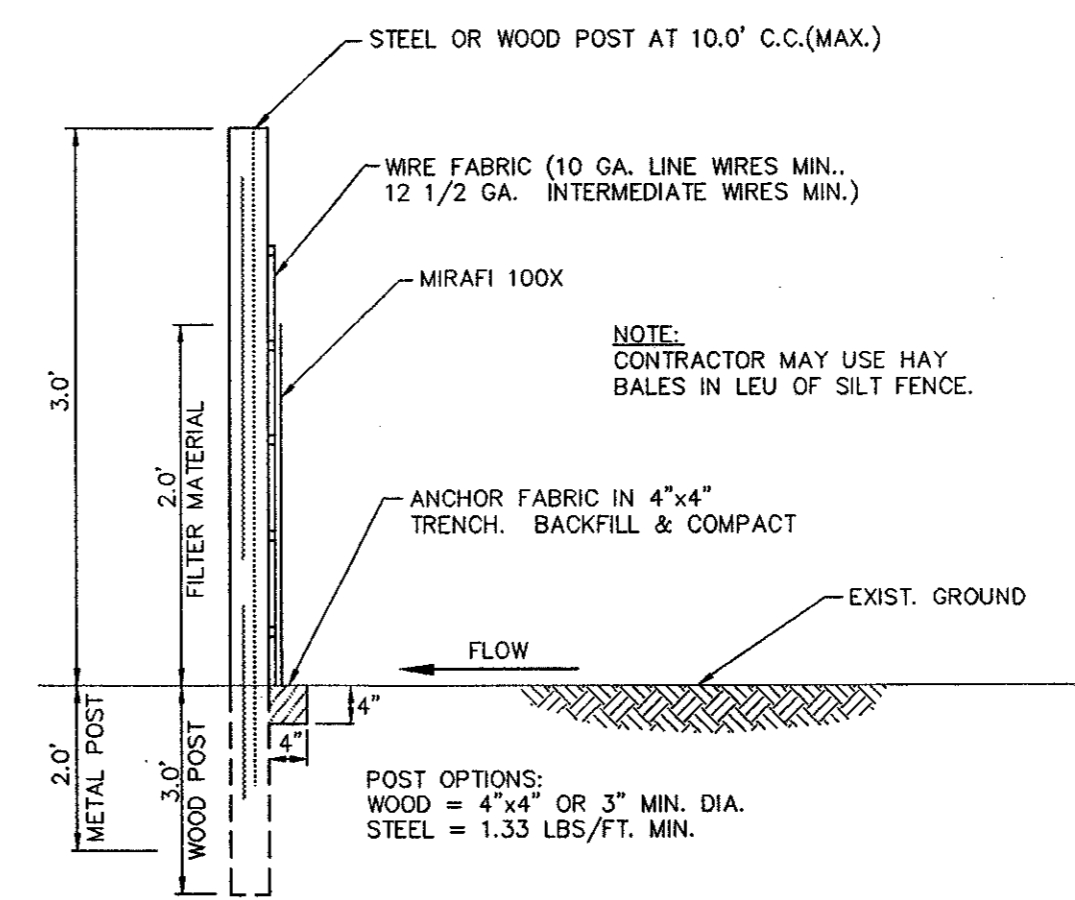
5 SAWED DUMMY JOINT
NOT TO SCALE



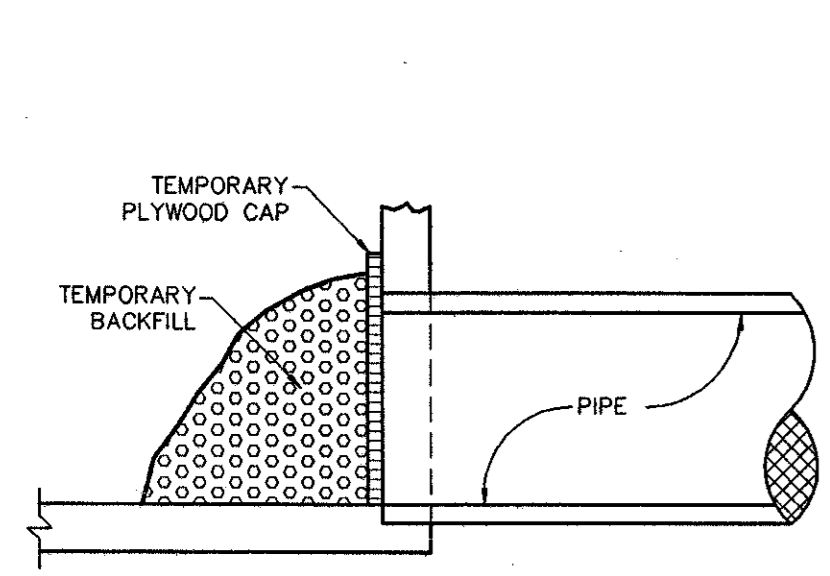
6 CONSTRUCTION JOINT
NOT TO SCALE



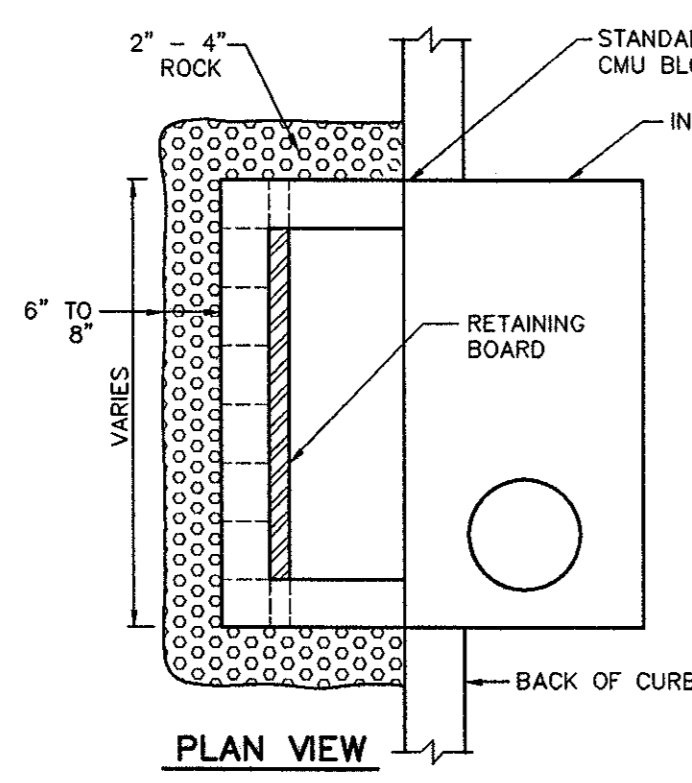
7 CONCRETE WALK
NOT TO SCALE



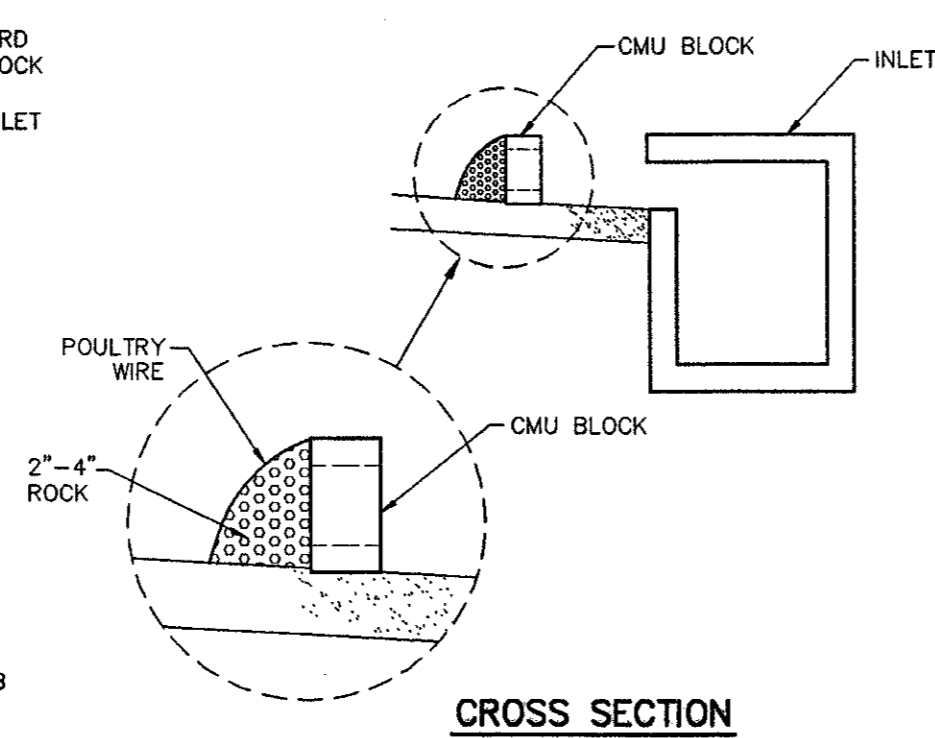
SILT FENCE DETAIL:
TYPICAL TEMPORARY FILTER FABRIC WITHOUT WIRE FABRIC
N.T.S.



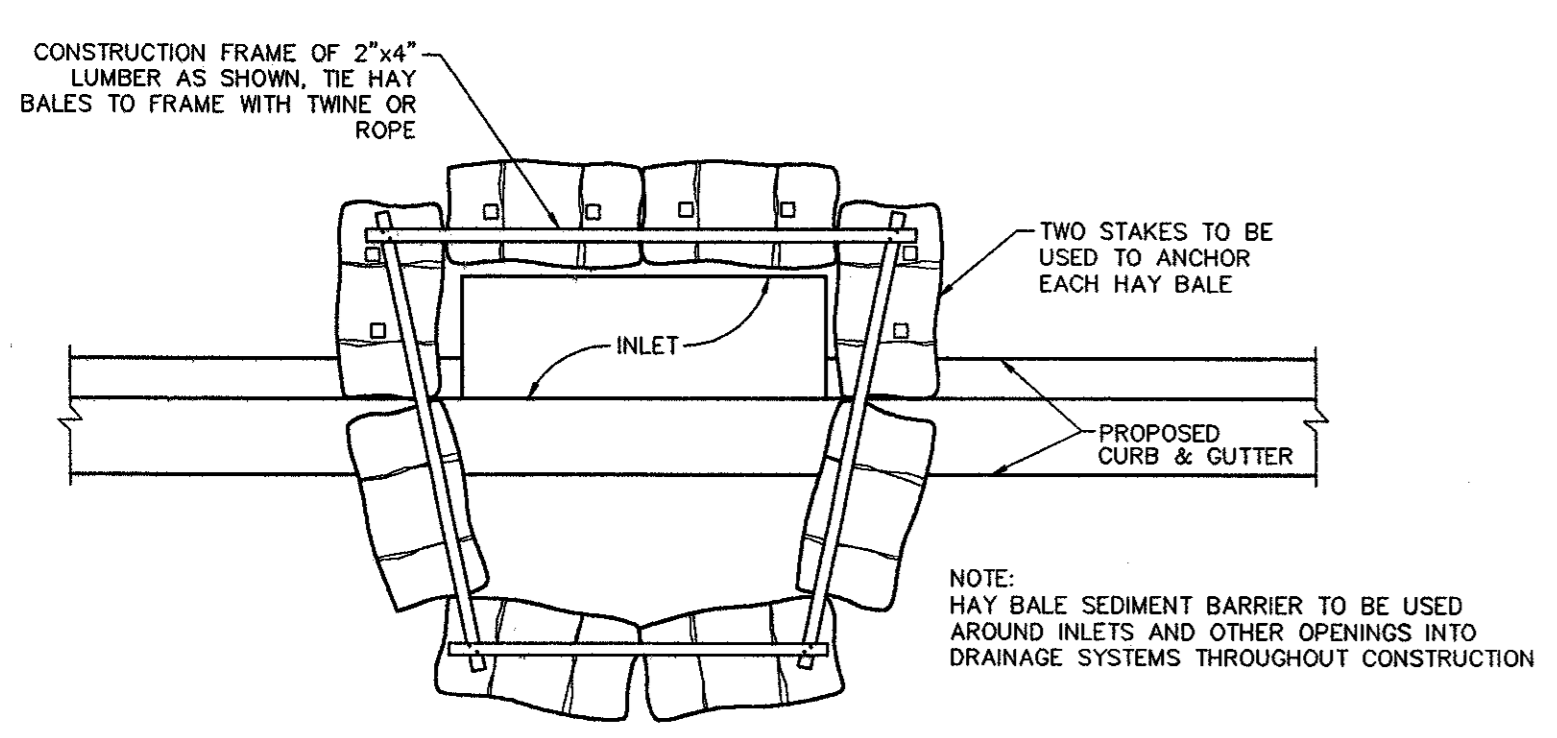
CROSS SECTION PHASE ONE CURB INLET PROTECTION
N.T.S.



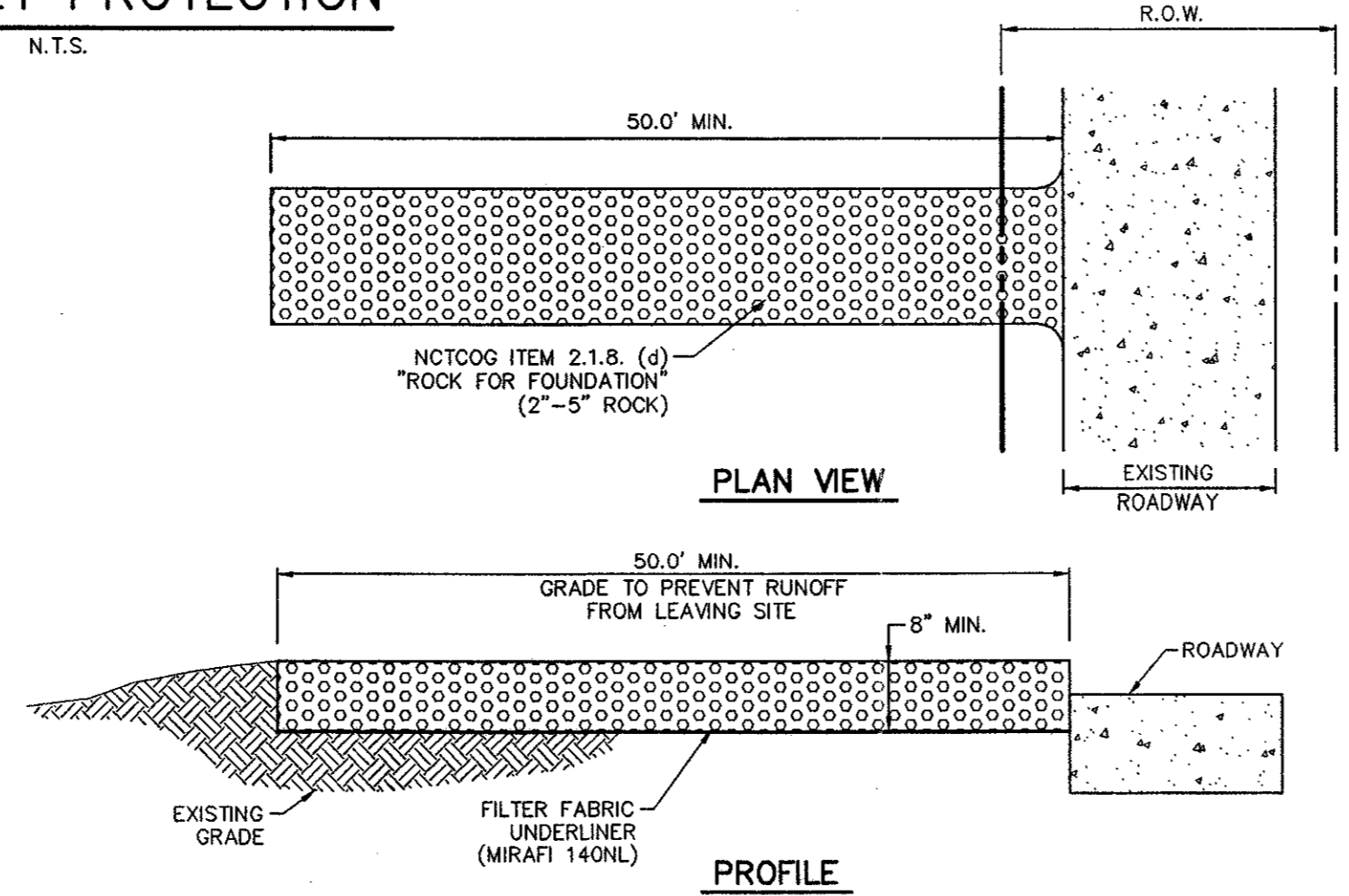
PHASE TWO CURB INLET PROTECTION
N.T.S.



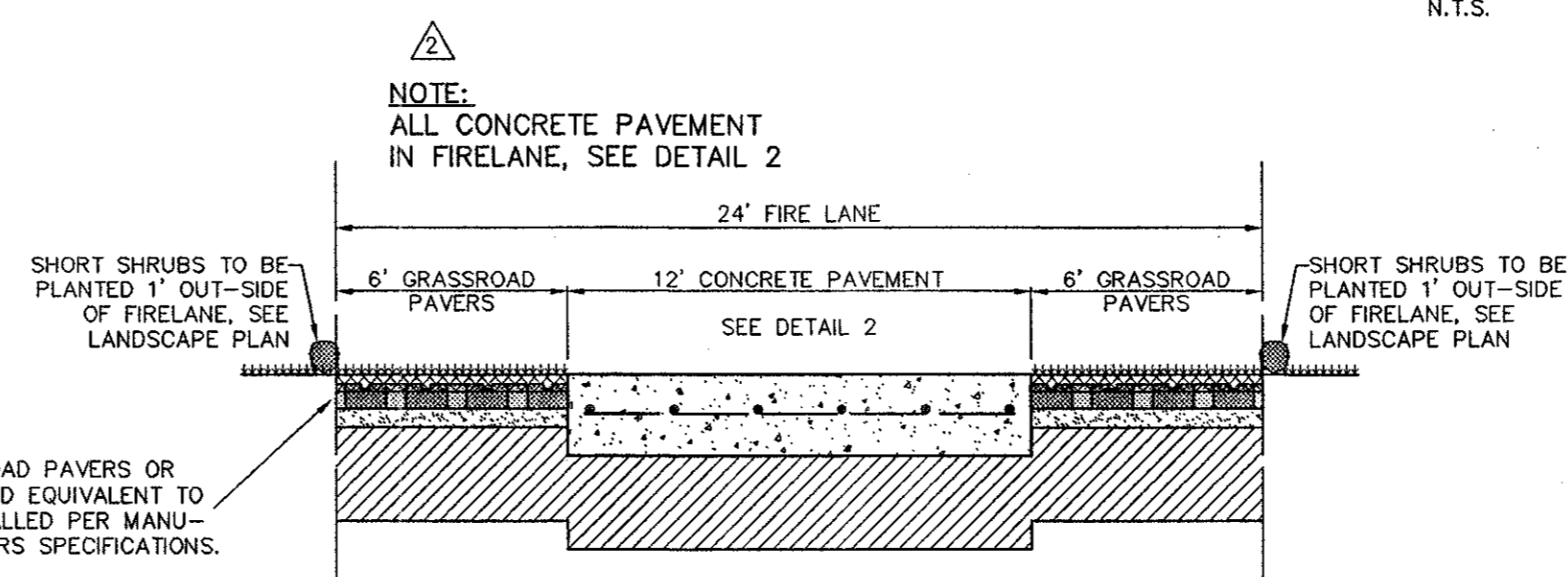
ALTERNATE 1



ALTERNATE 2 PHASE TWO CURB INLET PROTECTION
N.T.S.



CONSTRUCTION ENTRANCE
N.T.S.



8 TYPICAL FIRELANE SECTION IN GRASSROAD PAVER AREAS
NOT TO SCALE

POLLUTION CONTROL GENERAL NOTES

- THIS PLAN HAS BEEN PREPARED TO PROVIDE MEANS TO PREVENT OR MINIMIZE POLLUTION OF STORM WATER.
- THE CONSTRUCTION ACTIVITY INCLUDED IN THIS PLAN WILL INCLUDE:
 - CLEARING AND GRUBBING
 - ROUGH GRADING
 - FINAL GRADING
 - UTILITY INSTALLATION
 - PAVEMENT INSTALLATION
 - BUILDING CONSTRUCTION
- THE TOTAL ESTIMATED LAND AREA TO BE DISTURBED IS 2.0 ACRE.
- THE ESTIMATED RUNOFF COEFFICIENT UPON COMPLETION OF THE PROJECT IS 0.90%.
- THE STORM WATER EXITING THE SITE IS COLLECTED IN AN EXISTING DRAINAGE SYSTEM MAINTAINED BY THE TOWN OF ADDISON, TEXAS.
- THE SOILS ON THE SITE ARE GENERALLY EXPANSIVE CLAYS.
- THE CONTRACTOR SHALL PROVIDE EROSION PROTECTION AROUND THE WORK AREA PERIMETER AND AT ALL INLET MOUTHS DURING CONSTRUCTION.
- THE CONTRACTOR WILL REMOVE ALL EXCESS SOIL FROM CONSTRUCTION VEHICLES PRIOR TO EXITING THE SITE.
- ALL DISTURBED AREAS WHICH WILL NOT BE RE-DISTURBED FOR A MINIMUM OF 21 DAYS MUST BE STABILIZED BY THE CONTRACTOR TO CONTROL EROSION.
- THE CONTRACTOR SHALL UNDERTAKE PROPER METHODS TO REDUCE DUST GENERATION FROM THE SITE.
- THE CONTRACTOR MUST COMPLY WITH FEDERAL, STATE AND LOCAL REGULATIONS REGARDING SEDIMENT AND EROSION CONTROL.
- A COPY OF THIS PLAN MUST BE KEPT AT THE CONSTRUCTION FACILITY DURING THE ENTIRE CONSTRUCTION PERIOD.

- PAVING AND DRAINAGE GENERAL NOTES**
- ALL WORK, UNLESS OTHERWISE NOTED, SHALL CONFORM TO THE STANDARD SPECIFICATIONS FOR PUBLIC WORKS CONSTRUCTION, ISSUED BY THE NORTH CENTRAL TEXAS COUNCIL OF GOVERNMENTS, AND TOWN OF ADDISON STANDARD CONSTRUCTION SPECIFICATIONS.
 - UNLESS OTHERWISE NOTED, ALL CONCRETE SHALL BE CLASS "A", (3000 PSI).
 - THE HORIZONTAL AND VERTICAL LOCATIONS OF EXISTING SUBSURFACE UTILITIES HAVE BEEN DETERMINED FROM DATA RECORDED BY OTHERS. CONTRACTOR SHALL VERIFY THAT NECESSARY CROSSING CLEARANCES BETWEEN EXISTING AND PROPOSED UTILITIES EXIST PRIOR TO CONSTRUCTION OF ANY SUCH CROSSING. IT WILL BE THE RESPONSIBILITY OF THE CONTRACTOR TO PROTECT ALL PUBLIC UTILITIES IN THE CONSTRUCTION OF THIS PROJECT.
 - CONTRACTOR SHALL MAINTAIN ONE SET OF "RECORD DRAWINGS" ON SITE WHICH WILL BE SUBMITTED TO OWNER OR ENGINEER UPON COMPLETION OF THE PROJECT. RECORD DRAWINGS SHALL INDICATE THE LOCATION OF ALL SUBTERRANEAN UTILITY IMPROVEMENTS, AND INDICATE TIES TO ALL MANHOLES, CULVERTS, INLETS, JUNCTION BOXES, ETC.
 - THE CONTRACTOR IS RESPONSIBLE FOR COMPLIANCE WITH ALL FEDERAL, STATE AND LOCAL REGULATIONS REGARDING TRENCH SAFETY.
 - STORM DRAIN LINES MAY BE OF THE FOLLOWING MATERIALS:
 - RCP C-76, CLASS III
 - ADS N-12
 - HANCOR HI-Q
 INSTALLED IN ACCORDANCE WITH MANUFACTURER'S SPECIFICATIONS.
 - BARRICADING AND PROJECT SIGNS SHALL CONFORM TO "STATE DEPARTMENT OF HIGHWAYS AND PUBLIC TRANSPORTATION BARRICADING AND CONSTRUCTION STANDARDS."
 - PRIOR TO COMMENCEMENT OF CONSTRUCTION, BONDS AND THREE-WAY CONTRACTS SHALL BE SUBMITTED TO THE CITY AS REQUIRED.

- WATER AND SANITARY SEWER GENERAL NOTES**
- ALL WORK, UNLESS OTHERWISE NOTED, SHALL CONFORM TO THE STANDARD SPECIFICATIONS FOR PUBLIC WORKS CONSTRUCTION, ISSUED BY THE NORTH CENTRAL TEXAS COUNCIL OF GOVERNMENTS, AND TOWN OF ADDISON STANDARD CONSTRUCTION SPECIFICATIONS.
 - UNLESS OTHERWISE NOTED, ALL CONCRETE SHALL BE CLASS "A", (3000 PSI).
 - THE HORIZONTAL AND VERTICAL LOCATIONS OF EXISTING SUBSURFACE UTILITIES HAVE BEEN DETERMINED FROM DATA RECORDED BY OTHERS. CONTRACTOR SHALL VERIFY THAT NECESSARY CROSSING CLEARANCES BETWEEN EXISTING AND PROPOSED UTILITIES EXIST PRIOR TO CONSTRUCTION OF ANY SUCH CROSSING. IT WILL BE THE RESPONSIBILITY OF THE CONTRACTOR TO PROTECT ALL PUBLIC UTILITIES IN THE CONSTRUCTION OF THIS PROJECT.
 - CONTRACTOR SHALL MAINTAIN ONE SET OF "RECORD DRAWINGS" ON SITE WHICH WILL BE SUBMITTED TO OWNER OR ENGINEER UPON COMPLETION OF THE PROJECT. RECORD DRAWINGS SHALL INDICATE THE LOCATION OF ALL SUBTERRANEAN UTILITY IMPROVEMENTS, AND INDICATE TIES TO ALL MANHOLES, CULVERTS, INLETS, JUNCTION BOXES, ETC.
 - ALL WATER MAINS SHALL BE DUCTILE IRON CLASS 51 WITH CATHODIC PROTECTION OR PVC C900, DR 18, CLASS 150.
 - ALL WATER MAINS UNLESS OTHERWISE NOTED SHALL HAVE A MINIMUM COVER OF 48" BELOW FINISHED GRADE.
 - SANITARY SEWER PIPE SHALL BE PVC SDR-35.
 - THE CONTRACTOR IS RESPONSIBLE FOR COMPLIANCE WITH ALL FEDERAL, STATE AND LOCAL REGULATIONS REGARDING TRENCH SAFETY.
 - BARRICADING AND PROJECT SIGNS SHALL CONFORM TO "STATE DEPARTMENT OF HIGHWAYS AND PUBLIC TRANSPORTATION BARRICADING AND CONSTRUCTION STANDARDS."
 - PRIOR TO COMMENCEMENT OF CONSTRUCTION, BONDS AND THREE-WAY CONTRACTS SHALL BE SUBMITTED TO THE CITY AS REQUIRED.
 - WHERE A SANITARY SEWER PARALLELS A WATERLINE, THE SEWER SHALL BE CONSTRUCTED OF CAST IRON, DUCTILE IRON OR PVC MEETING ASTM SPECIFICATIONS WITH A PRESSURE RATING FOR BOTH THE PIPE AND JOINTS OF 150 PSI. THE VERTICAL SEPARATION SHALL BE MINIMUM OF TWO FEET BETWEEN OUTSIDE DIAMETERS AND THE HORIZONTAL SEPARATION SHALL BE A MINIMUM OF FOUR FEET BETWEEN OUTSIDE DIAMETERS. THE SEWER SHALL BE LOCATED BELOW THE WATERLINE.

REVISED: NOV 25, 1997
REVISED: OCT 24, 1997
REVISED: SEP 8, 1997

PACHECO KOCH Consulting Engineers, Inc. 9401 LBJ Freeway, Suite 300 Dallas, Texas 75243 (972) 235-3031
Civil Engineering • Land Surveying



DETAILS SHEET
BUILDING EXPANSION
GREENHILL SCHOOL
ABST No. 273, DALLAS COUNTY
TOWN OF ADDISON, TEXAS

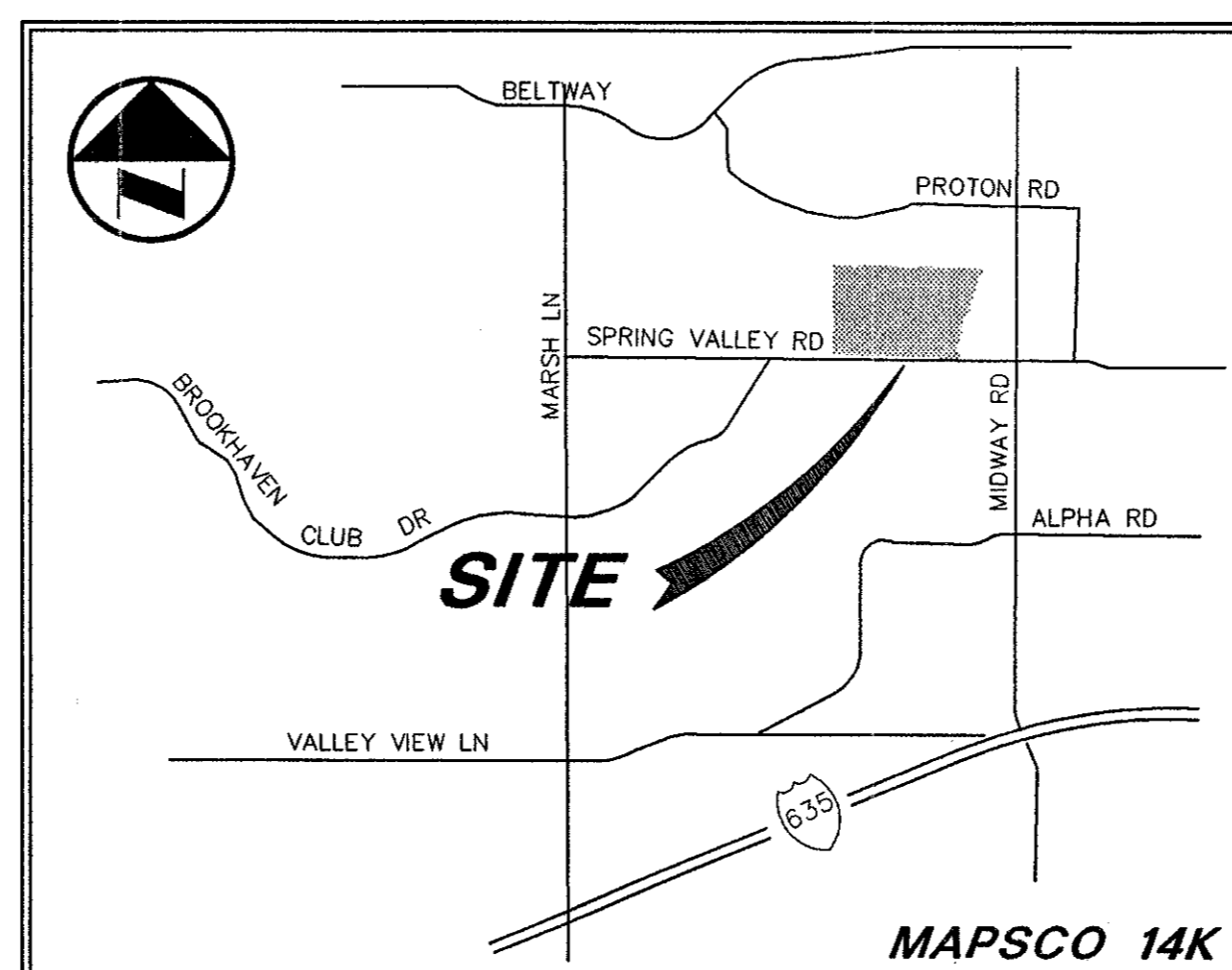
| DESIGN | DRAWN | DATE | SCALE | NOTES | FILE | NO. |
|--------|-------|----------|--------|-------|------|-----|
| SAM | BB | SEP 1997 | 1"=20' | | | C-6 |

THE SEAL APPEARING ON THIS DOCUMENT WAS AUTHORIZED BY STEVEN A. MARKUSSEN P.E. 70080 ON 11/25/97. ALTERATION OF A SEALED DOCUMENT WITHOUT PROPER NOTIFICATION TO THE RESPONSIBLE ENGINEER IS AN OFFENSE UNDER THE TEXAS ENGINEERING PRACTICE ACT.

GREENHILL SCHOOL SPORTS COMPLEX EXPANSION TOWN OF ADDISON, TEXAS

SHEET INDEX

| | |
|----|--------------------------|
| | REPLAT (2 SHEETS) |
| C1 | DIMENSIONAL CONTROL PLAN |
| C2 | GRADING PLAN |
| C3 | DRAINAGE PLAN |
| C4 | SITE UTILITY PLAN |
| C5 | WATER LINE PROFILES |
| C6 | DETAILS SHEET |



VICINITY MAP

JUNE, 1997



THE SEAL APPEARING ON THIS DOCUMENT WAS AUTHORIZED BY STEVEN A. MARKUSSEN P.E. 70090 ON 06/25/97. ALTERATION OF A SEALED DOCUMENT WITHOUT PROPER NOTIFICATION TO THE RESPONSIBLE ENGINEER IS AN OFFENSE UNDER THE TEXAS ENGINEERING PRACTICE ACT.

PACHECO KOCH
Consulting Engineers, Inc.
Civil Engineering • Land Surveying

9401 LBJ Freeway, Suite 300
Dallas, Texas 75243
(972) 235-3031

△ REVISED 6/25/97

BK6-1

GREENHILL SCHOOL Natatorium/Auditorium Addition 8/97
Const. Set.

BK6-1